

Lightruss Rail

LRU12274 24.00 in

SPILIGHTING

PROJECT DETAILS

JOB NAME:

TYPE:

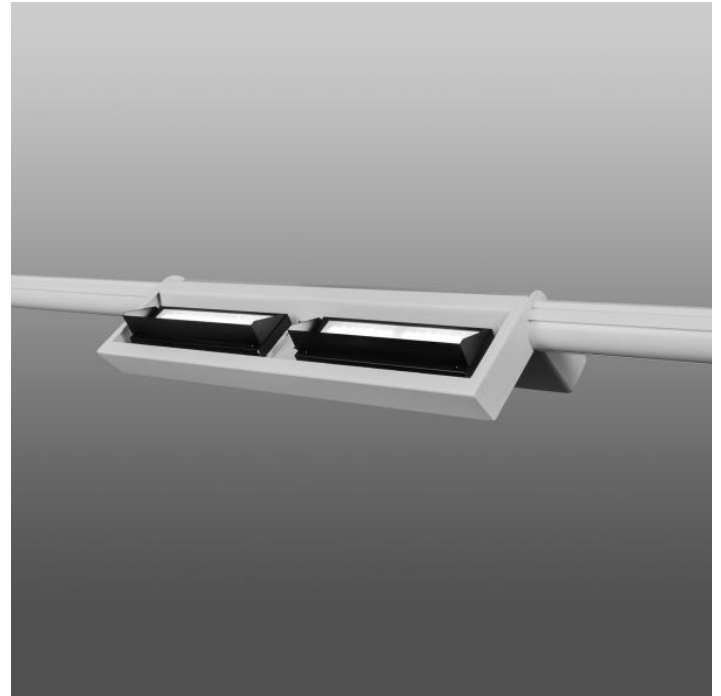
NOTES:

DESCRIPTION

At just 2.5 inches deep, Lightruss Rail is the most compact product in the revolutionary Lightruss family. Designed with integrated LED modules, it brightly illuminates large spaces powerfully and efficiently. Mounted on a single rail, the system's streamlined design blends seamlessly with ceiling construction. Hinged housings clamp over the rail and are self-supporting without tools, simplifying installation and maintenance. It's an elegant way to safely light natatoriums or other high ceiling applications. For a complimentary lighting layout, contact our applications team at SPIteam@spilighting.com.

FEATURES & BENEFITS

- Create a contemporary look with this low profile, single rail design
- Present a clean visual package by encapsulating wireways and eliminating vertical stems
- Lessen glare on surfaces, increase visual comfort and improve light uniformity with indirect lighting
- Robust construction with natatorium option
- Eliminate fixtures over pools
- Save 25 to 30 percent on installation costs by reducing the number of power drops
- Gain freedom and flexibility for ideal positioning of luminaires regardless of ceiling impediments such as supports, HVAC and other systems
- Access and remove lighting modules without disassembling the entire system
- Choose from visually-matching indirect and direct lighting luminaires
- Rail system can be modified to turn corners and change elevations
- Handcrafted in USA

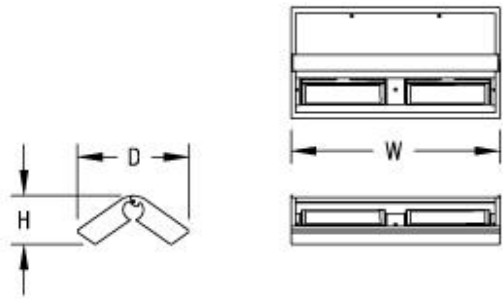


SPECIFICATIONS

- **LIGHT SOURCE:** White LED light engine
- **CRI:** 80+ or 90+
- **LUMEN MAINTENANCE:** L70 = >50,000 Hrs.

- **EFFICACY:** Up to 130 lm/W delivered
- **CCT:** 2700K, 3000K, 3500K, 4000K, 5000K
- **VOLTAGE:** 120-277V standard
- **DRIVER:** Fully potted integral Class 2 power supply standard
- **MAX AMBIENT OPERATING TEMP:** 34°C (93°F)
- **DIMMING:** 5% minimum dim level standard. 1% dimming optional.
- **CONTROLS:** 0-10V 5% dimming standard. 0-10V 1% dimming, Lutron Athena, Current NX, and nLight AIR optional. Contact factory for other controls (e.g., Enlighted, Encelium, Wattstopper, WaveLinx, or Casambi).
- **INTEGRATED SURGE PROTECTION:** LED components are protected against minor surge events
- **CONSTRUCTION:** Aluminum housing; precision injection molded optics
- **FINISH:** Choose from 26 standard thermoset polyester powder coat paint colors. RAL®, Pantone®, or custom finishes available upon request.
- **APPROVALS:** ETL listed to UL standards (US & Canada) for use in damp locations; not recommended for exterior applications

DIMENSIONS



W	H	D
24 in	5.6 in	12.8 in
61 cm	14.2 cm	32.5 cm

Mounting Weight
Approximate: 15 lb (7 kg)

CONFIGURATOR

To configure your spec sheet online, go to www.spilighting.com/LRU12274. Not all options are available in all configurations; consult factory for details.

Required Field *

Catalog	Light Source*	Primary Finish*	Voltage*	Lamp Options*	CRI*	Controls*	Mounting*	Accessories	Options
LRU12274									
	A		B	C	D	E	F	G	H

A - LIGHT SOURCE *

To ensure color consistency, SPI uses precise bin selection and strict quality processes to maintain a 3-step (MacAdam) SDCM on all white LED lampings. Published LED luminaire wattages are calculated using a typical power supply efficiency of 88%; exact wattages may vary based on application. Alternative wattages available upon request.

L98W | White 98W LED Light Engine | Delivered Lumens: 12,740

See last page for finish options

B - VOLTAGE *

120-277V | Universal Voltage

C - LAMP OPTIONS *

Apply multiplier from chart for delivered lumens at other CCT's and CRI's.

- 2700K** | 2700K CCT
- 3000K** | 3000K CCT
- 3500K** | 3500K CCT
- 4000K** | 4000K CCT
- 5000K** | 5000K CCT

	80 CRI	90 CRI
2700K	n/a	0.67
3000K	0.93	0.74
3500K	0.93	0.74
4000K	1.00	0.74
5000K	1.00	n/a

D - CRI *

- DF_80**¹ | (default)
- 90**²

¹ Not available in 2700K

² Not available in 5000K

E - CONTROLS *

Extended lead times may apply for controls other than 0-10V. Contact factory for additional control options such as Enlighted, Encelium, Wattstopper, WaveLinx, Casambi, or others.

- DF_DIM5** | 0-10V Control, 5% Dimming (default)
- DIM1** | 0-10V Control, 1% Dimming
- AWNR**³ | Lutron Athena Wireless Node, 1% Dimming
- NX**³ | Current NX Wireless, 1% Dimming
- NLTA**³ | Acuity nLight Air, 1% Dimming

³ Not recommended for natatorium environments without additional component protection. Contact factory for options.

F - MOUNTING *

Hinged housing clamps over Lightruss Rail and is self-supporting without tools. Field adjustable aircraft cable allows the fixture to be mounted at an application appropriate height (up to OAH). Fixture modules can be added, removed or replaced without dismantling mounting track.

DF_AC | Corrosion-resistant nickel alloy aircraft cables (default)

G - ACCESSORIES

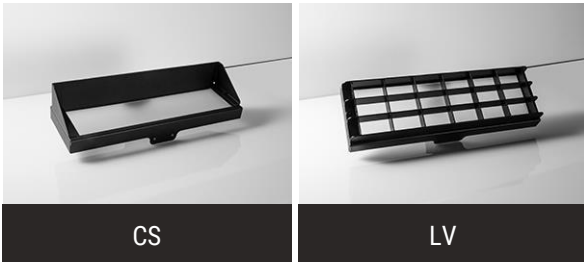
Product shown above with optional cut-off shields. Cut-off shield (CS) and louver (LV) options cannot be used together.

CS⁴ | Cut-Off Shield

LV⁵ | Louver

⁴ Apply .85 multiplier for delivered lumens

⁵ Apply .55 multiplier for delivered lumens



H - OPTIONS

When the NAT option is selected, you can feel confident that the luminaire specified is designed with high-quality materials that will withstand the corrosive environment of indoor pools. Electrical components are protected from moisture and the fixture has been tested to operate in warm ambient temperatures.

NAT | Natatorium Construction

F | Fusing

Standard Finishes

The colors shown are representative. Their actual appearance may vary due to differences in display settings. You can request color chips by emailing contact@spilighting.com. Please note, finishes may not be available in all configurations.

Paint Colors

PT01 RAL9003 Signal White (Gloss)	PT51 Matte White (Textured)	PT02 White (Textured)	PT04 RAL9001 Cream (Textured)	PT67 RAL7044 Silk Grey (Textured)
PT53 RAL7035 Light Grey (Textured)	PT54 RAL7037 Dusty Grey (Textured)	PT55 RAL7012 Basalt Grey (Textured)	PT56 RAL7016 Anthracite Grey (Textured)	PT11 Black (Textured)
PT57 RAL1015 Light Ivory (Textured)	PT58 RAL8004 Copper Brown (Textured)	PT59 RAL6021 Pale Green (Textured)	PT60 RAL1019 Grey Beige (Textured)	PT61 RAL7006 Beige Grey (Textured)
PT62 RAL1003 Signal Yellow (Textured)	PT63 RAL3001 Signal Red (Textured)	PT64 RAL6001 Emerald Green (Textured)	PT65 RAL5005 Signal Blue (Textured)	PT66 RAL5003 Sapphire Blue (Textured)

Metallic Paint Colors

PT22 Platinum (Metallic Gloss)	PT48 Brass (Metallic Textured)	PT28 Dark Stainless (Metallic Gloss)	PT49 Bronze (Metallic Textured)	PT32 Dark Bronze (Metallic Gloss)
PT46 Aluminum (Metallic Textured)				

Specialty Finishes



More RAL®, Pantone®, and custom finishes are available upon request. Setup fee and additional lead time applies. Call factory for details.