

# Lyon Exterior - Ceiling

SEC12112 49.20 in

JOB NAME:

TYPE:

NOTES:

## DESCRIPTION

Lyon is a family of small-scale linear LED fixtures that delivers impressive performance at an affordable price. Designed for exterior applications, it is a practical choice for lighting eaves, covered walkways, outdoor canopies or other exterior spaces. The lens, available in four shapes, softly diffuses light with minimal glare. Lyon's simple design and versatility make it suitable for many kinds of spaces. Available in interior and exterior pendant, ceiling, and wall mount versions in 4' and 8' lengths.

## FEATURES & BENEFITS

- Choose from 4 diffuser shapes
- Configure in a run or mount as an individual fixture
- Housing is engineered to act as an efficient heat sink, maximizing output and life by allowing the LEDs to operate at optimal temperatures
- Up to 1495 lm/foot delivered at high wattage
- Semi-direct distribution of 89% direct/11% indirect
- Anodized finish provides durable corrosion protection
- Flush mounted external fasteners
- Available in low, medium and high wattages
- Provides functional lighting with comfortable luminance levels
- Handcrafted in USA

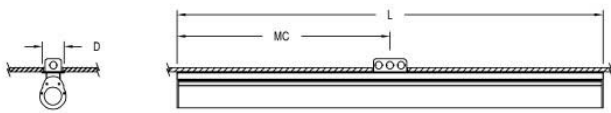
## SPECIFICATIONS

- **LIGHT SOURCE:** White LED light engine
- **CRI:** 80+ or 90+
- **LUMEN MAINTENANCE:** L70 = >50,000 Hrs.
- **EFFICACY:** 105 lm/W delivered
- **CCT:** 2700K, 3000K, 3500K, 4000K, 5000K
- **VOLTAGE:** 120-277V standard
- **DRIVER:** Includes remote damp listed Class 2 power supply and either a damp location or wet location enclosure. Continuous runs are supplied with one power supply per fixture. Max distance to the driver is: #18 AWG = 50', #16 AWG = 75', #14 AWG = 100'. For extended distances, contact factory.
- **DIMMING:** 0-10V controls standard to 1%



- **CONTROLS:** Contact factory for control options (e.g., Lutron Athena, Current NX, nLight, Enlighted, Encelium, Wattstopper, WaveLinx, or Casambi).
- **EMERGENCY:** Remote battery option is provided with 10W Constant Power Battery back-up, providing 90 Minutes of Emergency operation. Contact factory for other Emergency options.
- **INTEGRATED SURGE PROTECTION:** LED components are protected against minor surge events
- **LENS:** Diffused acrylic lens
- **CONSTRUCTION:** Housing fabricated from 6000 series aluminum extrusion
- **FINISH:** Housing available in anodized finish only with end cap and mounting components painted to match
- **MODIFICATIONS:** Consult factory for all modification requests, including RGB and static LED colors
- **APPROVALS:** ETL listed to UL standards (US & Canada) for use in wet locations

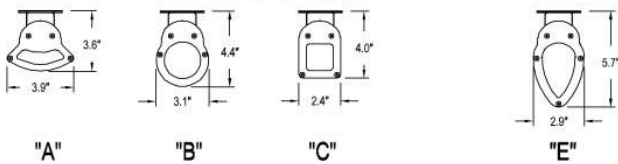
## DIMENSIONS



<b>D</b>	<b>MC</b>	<b>L</b>
4.4 in	24.6 in	49.2 in
11.2 cm	62.5 cm	125 cm

**Mounting Weight**  
Consult Factory.

### LENS OPTIONS



## CONFIGURATOR

To configure your spec sheet online, go to [www.spilighting.com/SEC12112](http://www.spilighting.com/SEC12112). Not all options are available in all configurations; consult factory for details.

### Required Field \*

Catalog	Light Source*	Primary Finish*	Voltage*	Lamp Options*	CRI*	Mounting*	Remote Power Supply Enclosure*	Linear Run	Emergency	Lens Shapes*	Options
SEC12112											
	A	B	C	D	E	F	G	H	I	J	
											Finish:

## A - LIGHT SOURCE \*

---

To ensure color consistency, SPI uses precise bin selection and strict quality processes to maintain a 3-step (MacAdam) SDCM on all white LED lampings. Published LED luminaire wattages are calculated using a typical power supply efficiency of 88%; exact wattages may vary based on application. Alternative wattages available upon request.

- L14W** | White 14W LED Light Engine | Delivered Lumens: 1,470
- L28W** | White 28W LED Light Engine | Delivered Lumens: 2,940
- L56W** | White 56W LED Light Engine | Delivered Lumens: 5,880

[See last page for finish options](#)

## B - VOLTAGE \*

---

- 120-277V** | Universal Voltage

## C - LAMP OPTIONS \*

---

Apply multiplier from chart for delivered lumens at other CCT's and CRI's.

- 2700K** | 2700K CCT
- 3000K** | 3000K CCT
- 3500K** | 3500K CCT
- 4000K** | 4000K CCT
- 5000K** | 5000K CCT

	80 CRI	90 CRI
2700K	1.00	0.84
3000K	1.00	0.84
3500K	1.00	0.84
4000K	1.00	0.84
5000K	1.00	0.84

## D - CRI \*

---

- DF\_80** | (default)
- 90**

## E - MOUNTING \*

---

Mounts to standard 2" x 4" switch box with auxiliary mounting holes. **INSTALLATION NOTES:** During installation the contractor is responsible to use actual fixtures to ensure accurate mounting centers from one fixture to the next along the length of the linear run. Choose a mounting from below:

- DF\_SSB** | Surface Mount with Standard Switch Box Cover (default)
- SJB** | Surface Mount with Standard J-Box Cover

## F - REMOTE POWER SUPPLY ENCLOSURE \*

- PSE** | Remote Power Supply with Damp Location Enclosure
- PSE-WL** | Remote Power Supply with Wet Location Enclosure
- PSE-NONE** | Remote Power Supply without Enclosure

## G - LINEAR RUN

Select this option only for runs longer than 4'. Continuous runs are configured with standard 4' and 8' sections; consult factory for other lengths.

- RUN**<sup>1</sup> | Continuous Run **OAL** | Specify Length of Run

<sup>1</sup> For a take-off and pricing, contact factory

## H - EMERGENCY

10W, Constant Power Battery Back-up, with 90 minutes of emergency operation. EMR will be included in enclosure specified above. When specifying EMR with RUN, the first fixture in the run will be the emergency unit. If other or different Emergency units are needed, contact factory. Additional Power feed location will be required to power non-emergency sections.

- EMR**<sup>2</sup> | Emergency Battery Remote

<sup>2</sup> EMR not available with PSE-NONE

## I - LENS SHAPES \*

Shown at top with shape "B". See line art for dimensions.

- A** | Lens Shape "A"
- B** | Lens Shape "B"
- C** | Lens Shape "C"
- E** | Lens Shape "E"



## J - OPTIONS

---

Alternate end cap finish (AEF) specified separately.

- EC01** | Solid End Cap
- AEF**<sup>3</sup> | Alternate End Cap Finish (See last page for finish options)

<sup>3</sup> Available in painted finishes only

## Standard Finishes

The colors shown are representative. Their actual appearance may vary due to differences in display settings. You can request color chips by emailing [contact@spilighting.com](mailto:contact@spilighting.com). Please note, finishes may not be available in all configurations.

### Paint Colors

<b>PT01</b> RAL9003 Signal White (Gloss)	<b>PT51</b> Matte White (Textured)	<b>PT02</b> White (Textured)	<b>PT04</b> RAL9001 Cream (Textured)	<b>PT67</b> RAL7044 Silk Grey (Textured)
<b>PT53</b> RAL7035 Light Grey (Textured)	<b>PT54</b> RAL7037 Dusty Grey (Textured)	<b>PT55</b> RAL7012 Basalt Grey (Textured)	<b>PT56</b> RAL7016 Anthracite Grey (Textured)	<b>PT11</b> Black (Textured)
<b>PT57</b> RAL1015 Light Ivory (Textured)	<b>PT58</b> RAL8004 Copper Brown (Textured)	<b>PT59</b> RAL6021 Pale Green (Textured)	<b>PT60</b> RAL1019 Grey Beige (Textured)	<b>PT61</b> RAL7006 Beige Grey (Textured)
<b>PT62</b> RAL1003 Signal Yellow (Textured)	<b>PT63</b> RAL3001 Signal Red (Textured)	<b>PT64</b> RAL6001 Emerald Green (Textured)	<b>PT65</b> RAL5005 Signal Blue (Textured)	<b>PT66</b> RAL5003 Sapphire Blue (Textured)

### Anodized

<b>AN04</b> Anodized
-------------------------

### Metallic Paint Colors

<b>PT22</b> Platinum (Metallic Gloss)	<b>PT48</b> Brass (Metallic Textured)	<b>PT28</b> Dark Stainless (Metallic Gloss)	<b>PT49</b> Bronze (Metallic Textured)	<b>PT32</b> Dark Bronze (Metallic Gloss)
<b>PT46</b> Aluminum (Metallic Textured)				

## Specialty Finishes



More RAL®, Pantone®, and custom finishes are available upon request. Setup fee and additional lead time applies. Call factory for details.