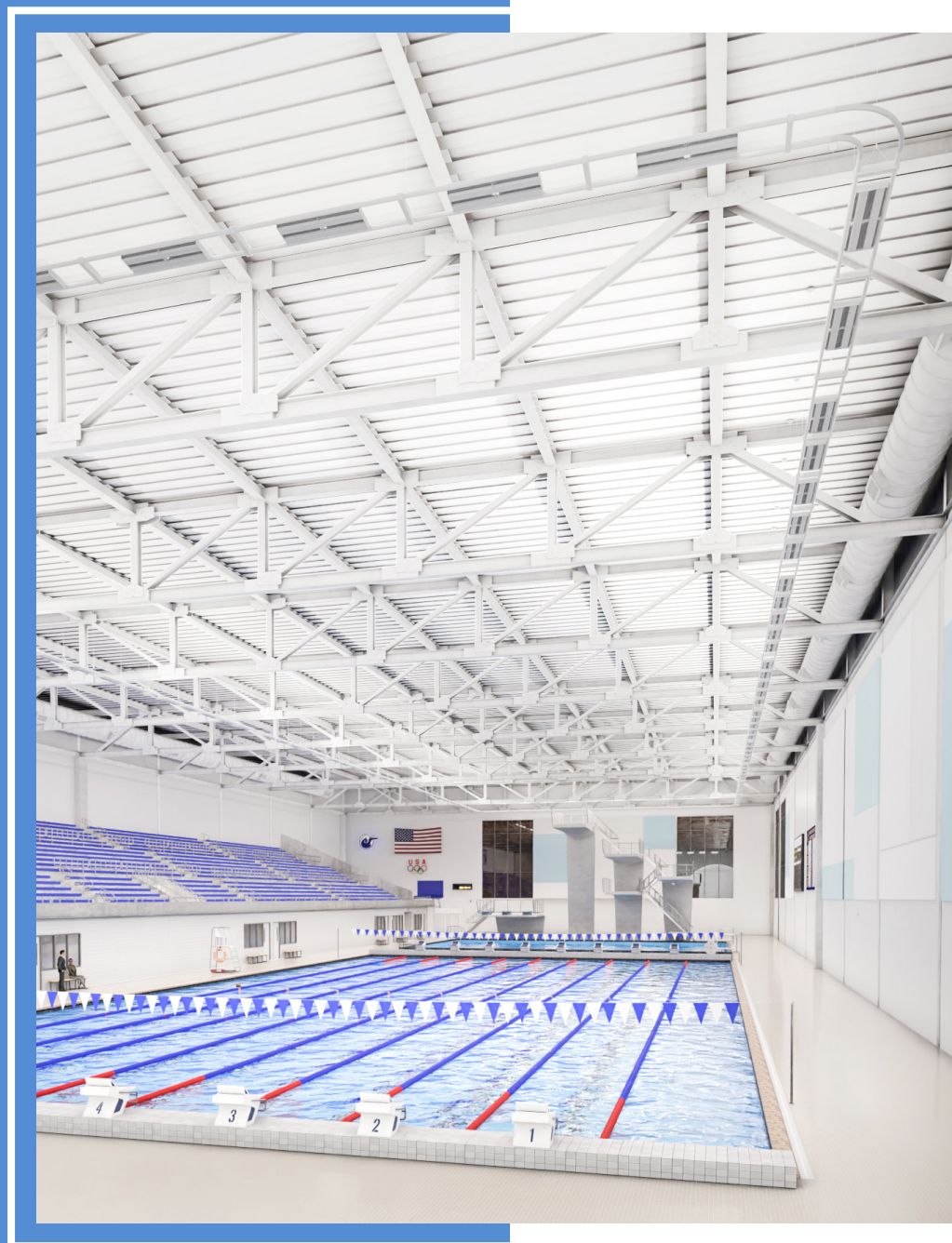


# LIGHTRUSS LED GEN 2

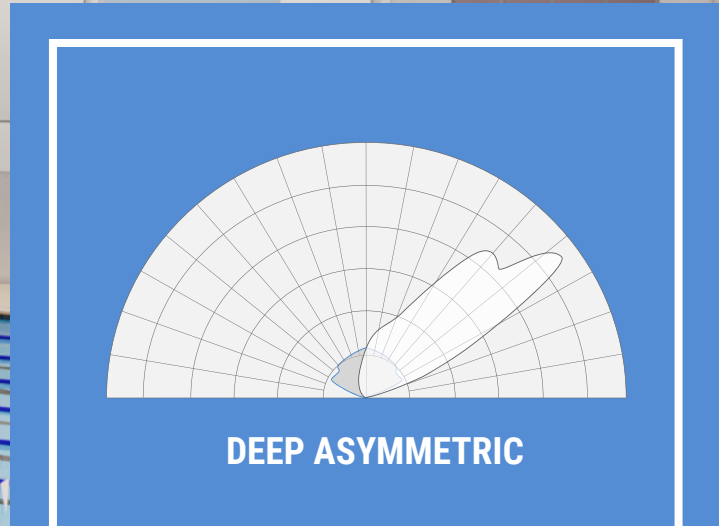
asymmetric indirect lighting system







# SUPERIOR DESIGN NEXT GENERATION ILLUMINATION



## WHAT IS IT?

Lightruss is a unified, organized system for delivering indirect light. Tried and tested, this flagship family has successfully lit more than 1,200 pools.

This latest generation advances on SPI Lighting's decades of experience to create a breakthrough low-profile design with true asymmetric optics and full horizontal cutoff.

Powered by state-of-the-art technology, the dual-rail system offers bigger lumen packages (up to 109,800 lumens) and better efficiency (127 lm/W)

to improve visibility, safety, and comfort with glare-free light.

## POWERFUL + EFFECTIVE

Lightruss LED Gen 2 packs even more output into a smaller footprint. Higher lumen packages reduce the number of fixture heads required to light a space.

High lumen density makes it possible to reach and exceed the most challenging light levels, even for televised competitions.

Available in three sizes, Lightruss LED Gen 2 can easily scale up or down to suit any project. From recreation facilities, to high school pools, to Olympic-sized natatoriums, this system is capable of achieving whatever footcandles your project requires.

State-of-the-art asymmetric optics provide advanced illumination. A deep forward throw directs light over the pool, delivering better uniformity in the space. It avoids high-luminance contrast and reduces shadows, balancing light.



Catalog ID	LRU12239	LRU12243
Truss Width	18"	34"
Length	24"	24"
Wattage	433	866
Delivered Lumens	54,904	109,809
Efficacy	127 lm/W	



# GET THE CLEANEST VISUAL PACKAGE

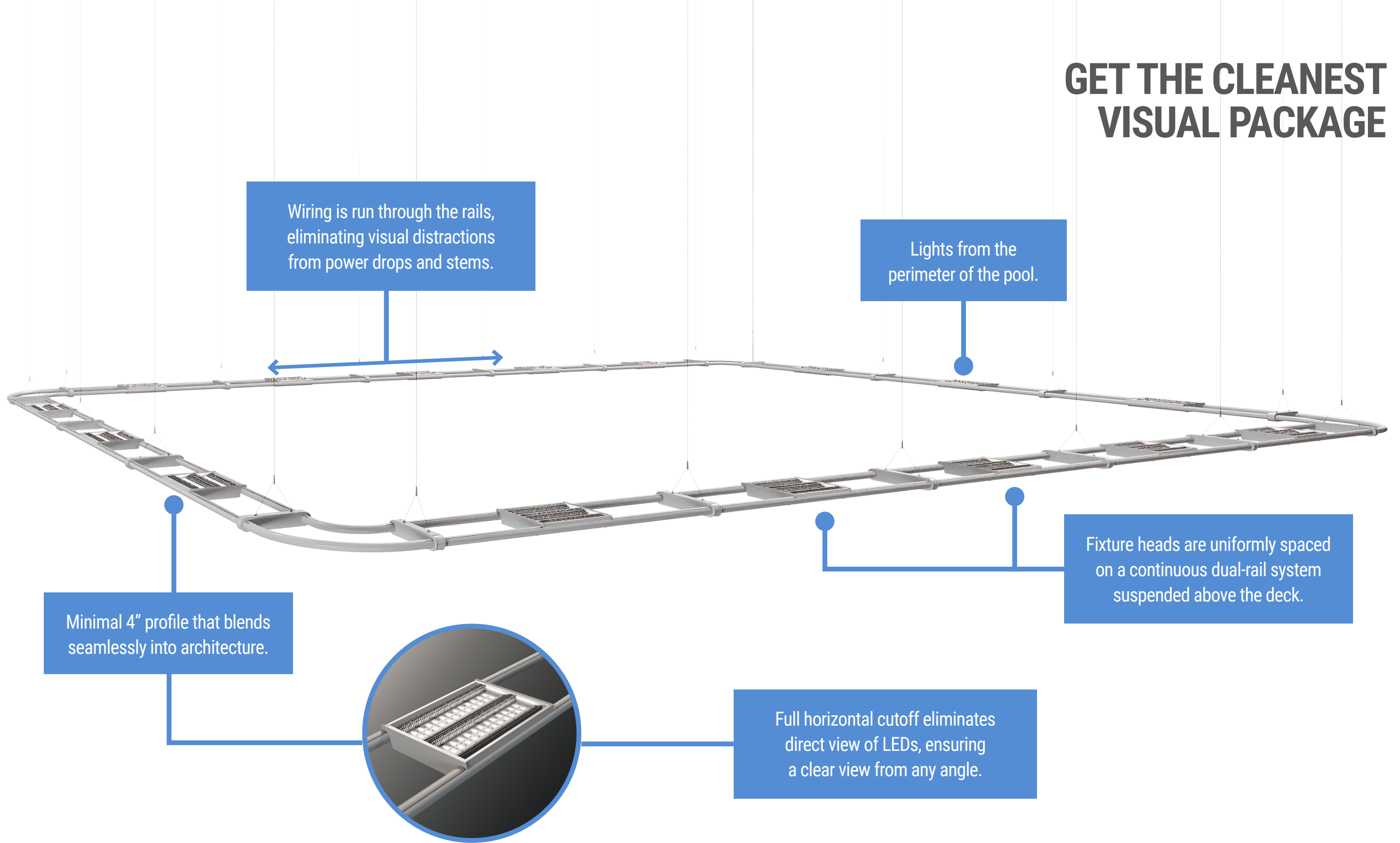
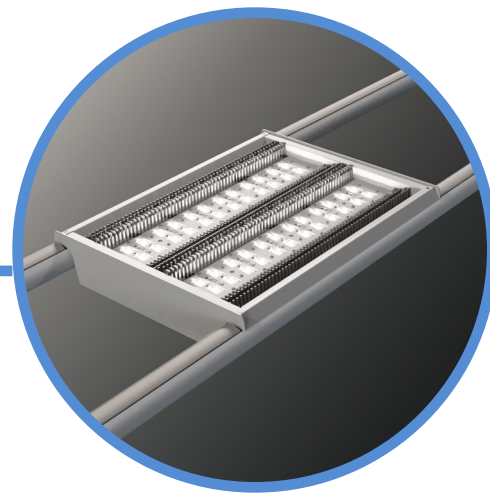
Wiring is run through the rails, eliminating visual distractions from power drops and stems.

Lights from the perimeter of the pool.

Fixture heads are uniformly spaced on a continuous dual-rail system suspended above the deck.

Minimal 4" profile that blends seamlessly into architecture.

Full horizontal cutoff eliminates direct view of LEDs, ensuring a clear view from any angle.



# SAVE MONEY ON INSTALLATION

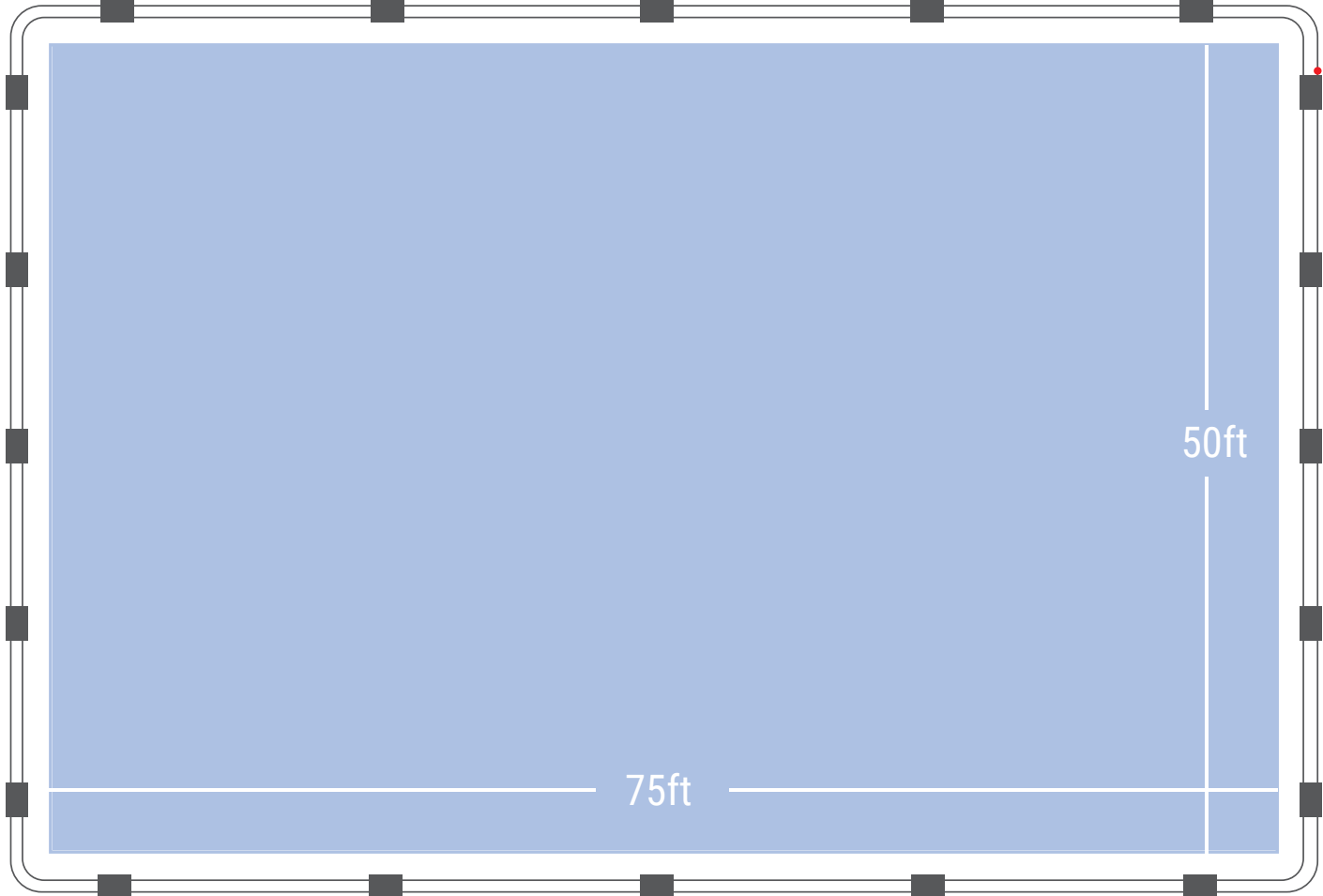
Experienced Lightruss contractors have reported saving 25-30% on installation costs compared to conventional indirect lighting solutions. That's possible because the system slashes electricians' time and materials. By running power through the rails, the number of power drops and amount of conduit needed is sharply reduced.

Planning the wiring scheme is easier, too. The two-rail truss has capacity to run up to twelve circuits. Each rail contains two separate wireways, enabling you to run optional emergency, dimming, or other circuitry through the system.

## LIGHTRUSS LED GEN 2

- 1 power drop & stem
- 20 fixture heads
- 25ft of conduit
- Pool average: 55 fc

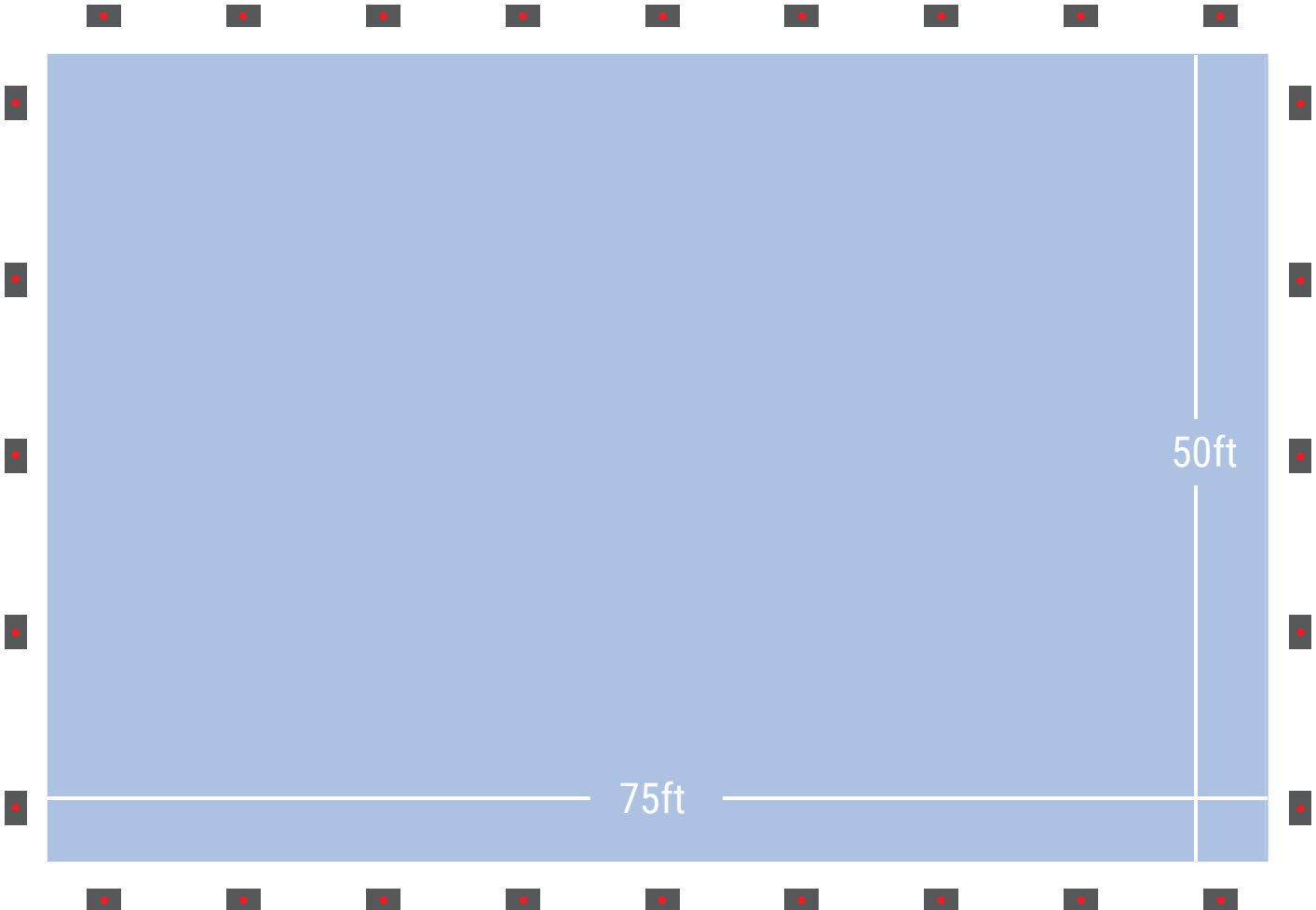
- - power drop & stem
- - fixture head



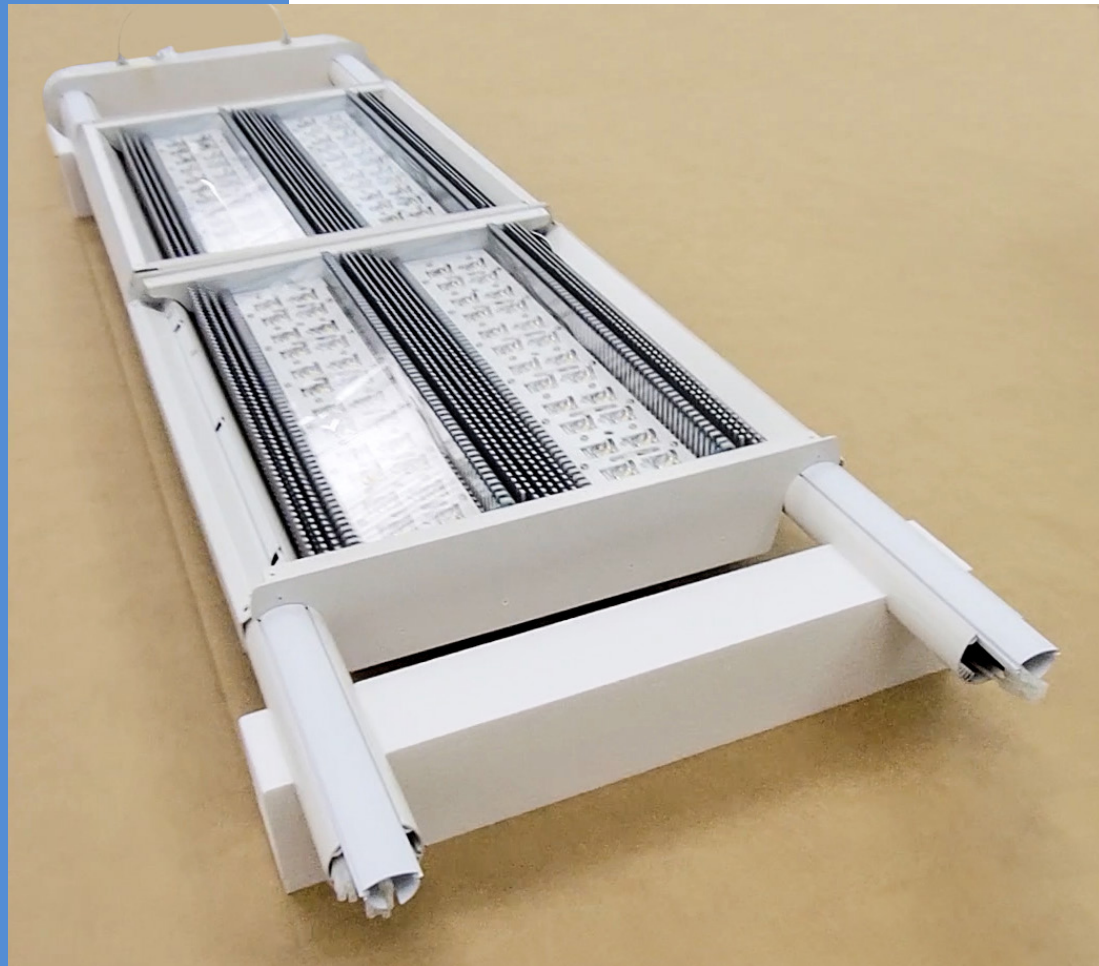
## CONVENTIONAL PENDANTS

- 28 power drops & stems
- 28 fixture heads
- 280+ft of conduit
- Pool average: 53 fc

- - power drop & stem
- - fixture head







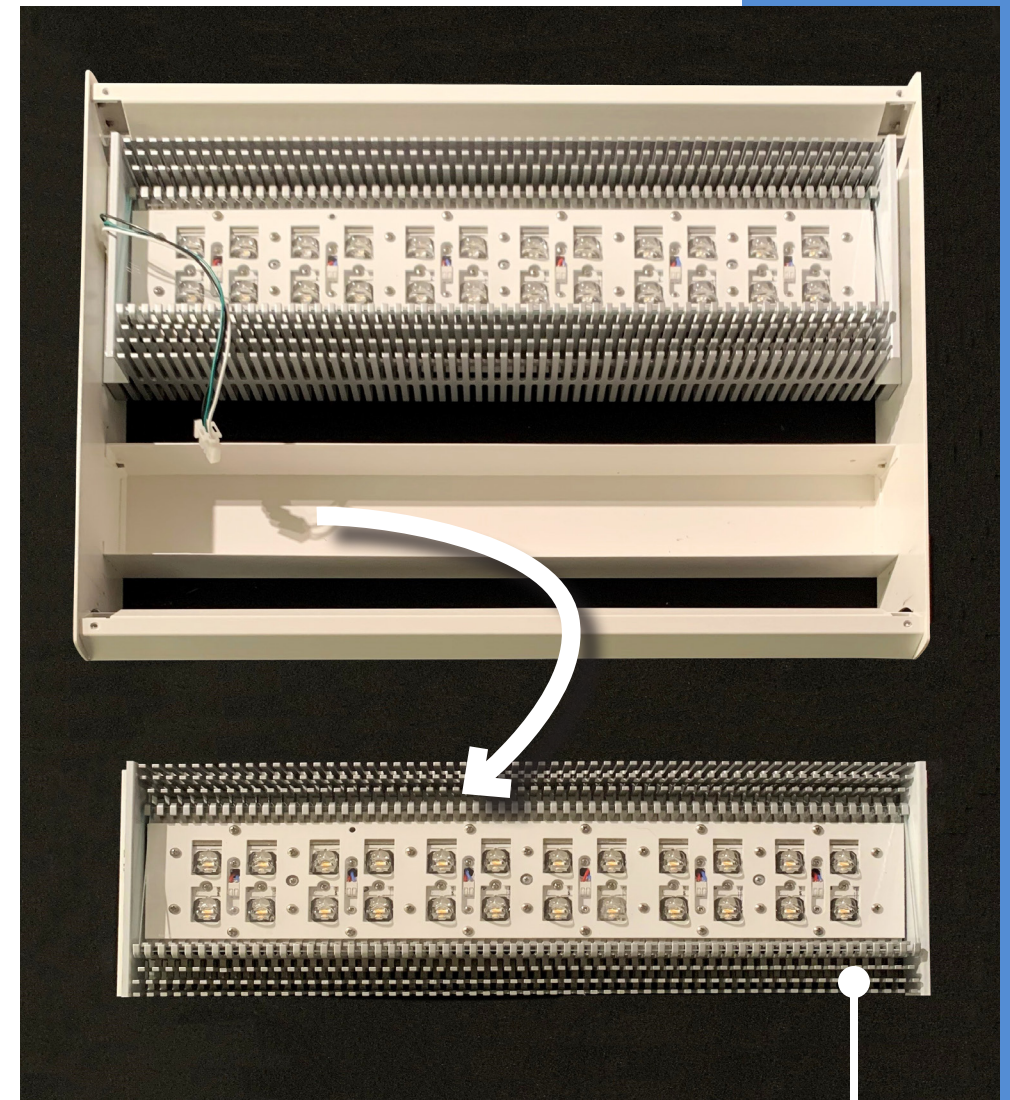
## CONTRACTOR-FRIENDLY

Each fixture head ships from the factory pre-assembled and mounted to the rails. Sections are keyed to the drawing so the contractor knows exactly where to hang each section. When the unexpected arises, fixture heads can be moved or added in the field without disassembling the system.

Sections are pre-wired at the factory with multi-pin male/female connectors—simply hang sections and plug together.



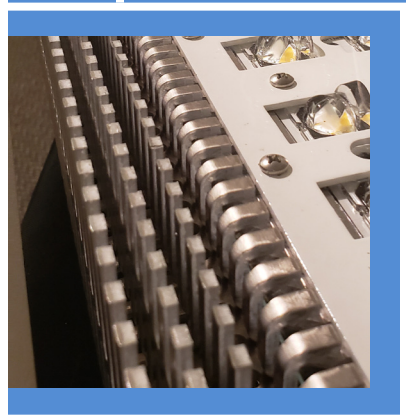
## EASY MAINTENANCE & ACCESSIBILITY



The dual-rail system positions lighting over the deck, not the water, making access more convenient. LEDs and power supplies are integrated into a quick-change LED light engine that can be easily swapped out.

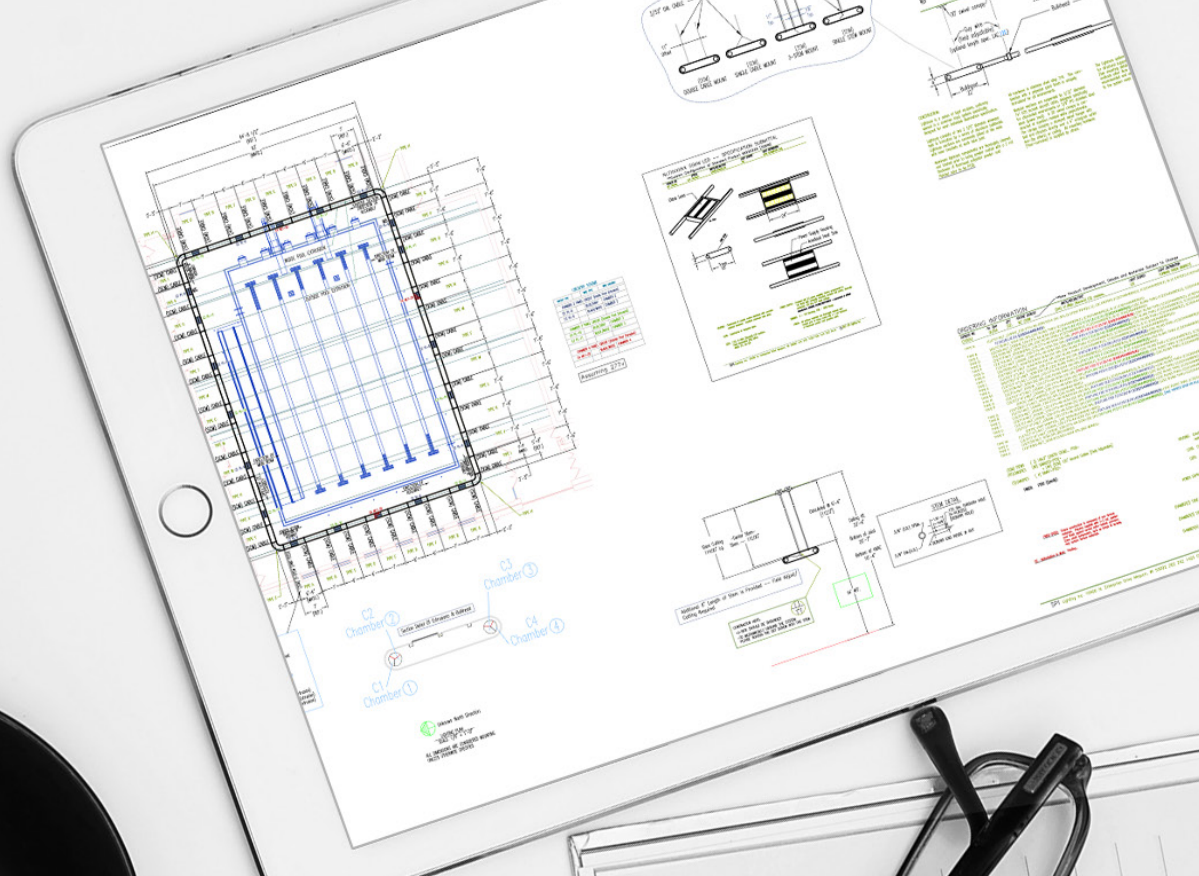
## INTEGRATED THERMAL MANAGEMENT

Lightruss LED Gen 2 is designed with an innovative pin fin heat sink to keep LEDs cool, lengthening the life of the system. It's been tested to operate in high ambient temperature environments up to 45°C (113°F) and has an impressive lifetime of LM-80 of L90 = >72,000 Hrs.





# EASY TO SPECIFY



When choosing lighting for a natatorium, safety is paramount. There are two basic lighting choices: direct or indirect.

Each Lightruss system is specified to your job requirements. Our experienced applications team will provide you with design assistance throughout the entire process, along with a full set of construction documents to help with the bid and installation. This includes:

**Actual drawing:** A complete layout of the system overlaid on an actual customer drawing of the space.

**Full system Bill of Materials:** A complete list of included components.

**Dimensions:** Detailed system dimensions are provided to aid in installation.

**Fixture head detail:** Specification submittals for individual fixture heads.

**Mounting details:** Guidance on how to mount sections.

**Suspension details:** Instructions are provided on how to suspend the system.

**Component labeling:** Each package and component is keyed to the installation drawings so all sections are easily identified at the job site.

**System wiring:** Wiring is designed by SPI Lighting's applications team to fit circuit loads, and system components are pre-wired with quick connects at the factory. Electricians simply plug and play.

See an interactive example of a Lightruss LED Gen 2 layout at [bit.ly/LightrussGEN2Layout](http://bit.ly/LightrussGEN2Layout).



Indirect lighting is the best way to light a pool.

When done well, indirect lighting evenly illuminates the ceiling, turning the entire ceiling into a smooth and comfortable source of brightness. There are no longer any individual points of brightness visible, and uncomfortable glare is eliminated on the reflected angles.

Neither from the ground level, or the water, is there noticeable light reflected off the

ceiling. The source of brightness that illuminates the space is effectively the entire illuminated ceiling.

Indirect lighting reduces the contrast reflections on the pool – reducing surface glare and improving visibility. Not only can lifeguards see better, but spectators and swimmers can, too.



# NATATORIUM GRADE

Lightruss LED Gen 2 is fully engineered for natatorium environments and rates highly in these key application specific considerations.

## VISUAL COMFORT



## LUMEN DENSITY



## EFFICACY



## LONGEVITY



## AMBIENT TEMPERATURE



When the NAT option is selected, you can feel confident that the luminaire specified is designed with high-quality materials that will withstand the corrosive environment of indoor pools. Electrical components are protected from moisture and the fixture has been tested to operate in warm ambient temperatures.

Lightruss LED Gen 2 is built to last with:

- All aluminum construction
- Corrosion-resistant fasteners
- Durable 2 mils polyester powder coat finish on housing, heat sink, and all critical fasteners
- Gasketed and fully sealed LED modules
- Fully potted power supplies
- An open design that doesn't trap condensation
- Minimized stress concentrations, internal pockets, and crevices
- A specialized, robust hanging mechanism
- Corrosion-resistant nickel-alloy aircraft cables

## THE NATATORIUM EXPERTS

With over 30 years of developing high quality indirect lighting solutions for natatoriums, SPI Lighting has the specialized knowledge, engineering expertise, and safety-first ethic to do it right.

There's a reason our products have been chosen to light more pools than any other manufacturer. With more than 1,200 installations, Lightruss is proven to be safe, easy, effective, and the best way to light competition and recreational facilities.



## GET STARTED

Send us an email at [applications@spilighting.com](mailto:applications@spilighting.com) to request a complimentary lighting layout. Our highly-experienced applications team will help you layout the best solution for your space.

Please include:

- AutoCAD floorplan drawings
- AutoCAD Section (Elevation) drawings
- Fixture schedule
- Target footcandle requirements

A complete set of documentation will be provided for inclusion in your bid.