

# Styk - Cove

SIV12141 2.90 in

**SPI**LIGHTING

PROJECT DETAILS

JOB NAME:

TYPE:

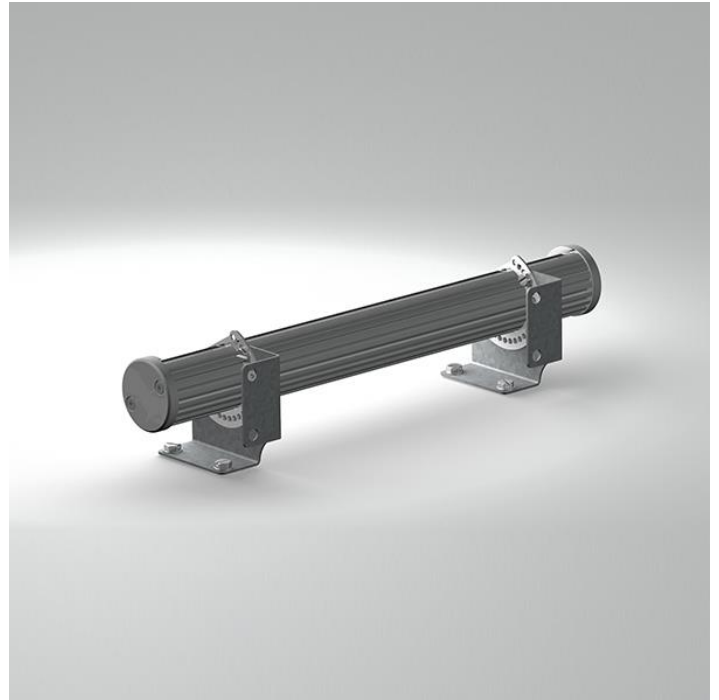
NOTES:

## DESCRIPTION

Styk was built to provide the most lumens with the smallest luminaire package, while optimizing life. Not limited to decorative lighting, effective functional lighting is provided through the optimal light control in this minimal package. It's three optical offerings enable tremendous flexibility including wall washing, wall grazing, and asymmetric lighting solutions. It produces high-quality illumination to accent and illuminate your architectural elements. Available in 1' to 8' lengths.

## FEATURES & BENEFITS

- A forward throw optic, for even wall wash illumination, is standard
- Symmetrical optic options are available for more volumetric illumination
- Lamp body can be rotated and locks into position for precise fixture alignment
- Up to 1,450 lumens per foot delivered (with Forward Throw distribution)
- Anodized finish provides durable corrosion protection
- Handcrafted in USA

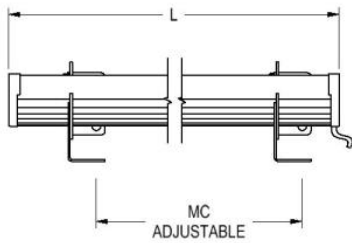
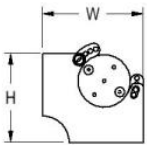


## SPECIFICATIONS

- **LIGHT SOURCE:** White LED light engine
- **CRI:** 80+ or 90+
- **LUMEN MAINTENANCE:** L70 = >50,000 Hrs.
- **EFFICACY:** 102 lm/W delivered (with Forward Throw distribution)
- **CCT:** 2700K, 3000K, 3500K, 4000K, 5000K
- **VOLTAGE:** 120-277V standard
- **DRIVER:** Includes one remote Class 2 power supply and enclosure, except 8FT-L113W which has two. 36" lead length standard; black power cord standard unless otherwise specified. Max distance to the driver is: #18 AWG = 50', #16 AWG = 75', #14 AWG = 100'. For extended distances, contact factory.
- **DIMMING:** 1% minimum dim level standard

- **CONTROLS:** 0-10V standard. Lutron Athena, Current NX, and nLight AIR optional. Contact factory for other controls (e.g., Enlighted, Encelium, Wattstopper, WaveLinx, or Casambi)
- **EMERGENCY:** Remote battery option is provided with 10W Constant Power Battery back-up, providing 90 Minutes of Emergency operation. Contact factory for other Emergency options.
- **INTEGRATED SURGE PROTECTION:** LED components are protected against minor surge events
- **CONSTRUCTION:** Extruded aluminum construction provides durable protection for internal components and is recyclable
- **FINISH:** Housing available in anodized finishes only. End caps and mounting components painted to match.
- **MODIFICATIONS:** Consult factory for all modification requests, including RGB and static LED colors
- **APPROVALS:** ETL listed to UL standards (US & Canada) for use in damp locations; not recommended for exterior applications

## DIMENSIONS



1FT	W	L	H
	2.9 in	13 in	2.8 in
	7.4 cm	33 cm	7.1 cm

Mounting Weight: Approximate: 5 lb (3 kg)

2FT	W	L	H
	2.9 in	24.8 in	2.8 in
	7.4 cm	63 cm	7.1 cm

Mounting Weight: Approximate: 5 lb (3 kg)

3FT	W	L	H
	2.9 in	36.5 in	2.8 in
	7.4 cm	92.7 cm	7.1 cm

Mounting Weight: Approximate: 5 lb (3 kg)

4FT	W	L	H
	2.9 in	48 in	2.8 in
	7.4 cm	121.9 cm	7.1 cm

Mounting Weight: Approximate: 5 lb (3 kg)

5FT	W	L	H
	2.9 in	60 in	2.8 in
	7.4 cm	152.4 cm	7.1 cm

Mounting Weight: Approximate: 10 lb (5 kg)

6FT	W	L	H
	2.9 in	72 in	2.8 in
	7.4 cm	182.9 cm	7.1 cm

Mounting Weight: Approximate: 10 lb (5 kg)

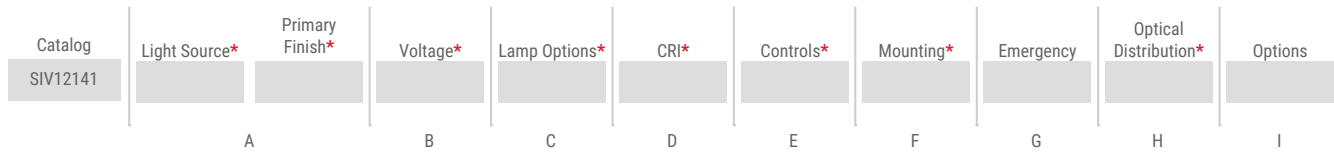
8FT	W	L	H
	2.9 in	96 in	2.8 in
	7.4 cm	243.8 cm	7.1 cm

Mounting Weight: Approximate: 10 lb (5 kg)

## CONFIGURATOR

To configure your spec sheet online, go to [www.spilighting.com/SIV12141](http://www.spilighting.com/SIV12141). Not all options are available in all configurations; consult factory for details.

### Required Field \*



## A - LIGHT SOURCE \*

To ensure color consistency, SPI uses precise bin selection and strict quality processes to maintain a 3-step (MacAdam) SDCM on all white LED lampings. Published LED luminaire wattages are calculated using a typical power supply efficiency of 88%; exact wattages may vary based on application. Delivered lumens shown below are for Forward Throw distribution.

### 1 FOOT NOMINAL FIXTURE

- 1FT-L4W** | White 4W LED Light Engine | Delivered Lumens: 407
- 1FT-L7W** | White 7W LED Light Engine | Delivered Lumens: 712
- 1FT-L14W** | White 14W LED Light Engine | Delivered Lumens: 1,424

### 2 FOOT NOMINAL FIXTURE

- 2FT-L8W** | White 8W LED Light Engine | Delivered Lumens: 814
- 2FT-L14W** | White 14W LED Light Engine | Delivered Lumens: 1,424
- 2FT-L28W** | White 28W LED Light Engine | Delivered Lumens: 2,848

### 3 FOOT NOMINAL FIXTURE

- 3FT-L12W** | White 12W LED Light Engine | Delivered Lumens: 1,220
- 3FT-L21W** | White 21W LED Light Engine | Delivered Lumens: 2,136
- 3FT-L42W** | White 42W LED Light Engine | Delivered Lumens: 4,271

### 4 FOOT NOMINAL FIXTURE

- 4FT-L16W** | White 16W LED Light Engine | Delivered Lumens: 1,627
- 4FT-L28W** | White 28W LED Light Engine | Delivered Lumens: 2,848
- 4FT-L56W** | White 56W LED Light Engine | Delivered Lumens: 5,695

### 5 FOOT NOMINAL FIXTURE

- 5FT-L20W** | White 20W LED Light Engine | Delivered Lumens: 2,034
- 5FT-L35W** | White 35W LED Light Engine | Delivered Lumens: 3,560
- 5FT-L71W** | White 71W LED Light Engine | Delivered Lumens: 7,221

### 6 FOOT NOMINAL FIXTURE

- 6FT-L24W** | White 24W LED Light Engine | Delivered Lumens: 2,441
- 6FT-L42W** | White 42W LED Light Engine | Delivered Lumens: 4,271
- 6FT-L85W** | White 85W LED Light Engine | Delivered Lumens: 8,645

### 8 FOOT NOMINAL FIXTURE

- 8FT-L32W** | White 32W LED Light Engine | Delivered Lumens: 3,254
- 8FT-L56W** | White 56W LED Light Engine | Delivered Lumens: 5,695
- 8FT-L113W** | White 113W LED Light Engine | Delivered Lumens: 11,492

See last page for finish options

## B - VOLTAGE \*

---

**120-277V** | Universal Voltage

## C - LAMP OPTIONS \*

---

Apply multiplier from chart for delivered lumens at other CCT's and CRI's.

- 2700K** | 2700K CCT
- 3000K** | 3000K CCT
- 3500K** | 3500K CCT
- 4000K** | 4000K CCT
- 5000K** | 5000K CCT

	80 CRI	90 CRI
2700K	1.00	0.84
3000K	1.00	0.84
3500K	1.00	0.84
4000K	1.00	0.84
5000K	1.00	0.84

## D - CRI \*

---

- DF\_80** | (default)
- 90**

## E - CONTROLS \*

---

Extended lead times may apply for controls other than 0-10V. Contact factory for additional control options such as Enlighted, Encelium, Wattstopper, WaveLinx, Casambi, or others.

- DF\_DIM1** | 0-10V Control, 1% Dimming (default)
- AWNR** | Lutron Athena Wireless Node, 1% Dimming
- NX** | Current NX Wireless, 1% Dimming
- NLTA** | Acuity nLight Air, 1% Dimming

## F - MOUNTING \*

---

Additional mounting structure and hardware required (by others). The 8FT-L113W option has a power cord exiting from both sides of the fixture.

- DF\_COV** | Cove Mount (default)

## G - EMERGENCY

---

10W, Constant Power Battery Back-up, with 90 minutes of emergency operation. EMR includes damp location enclosure for Battery back-up.

**EMR** | Emergency Battery Remote

## H - OPTICAL DISTRIBUTION \*

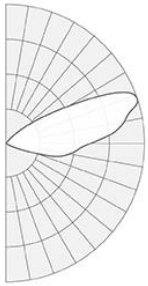
---

See IES zip file for photometrics for each distribution.

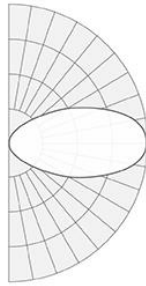
- DF\_FT** | Forward Throw (default)
- SMA**<sup>1</sup> | Symmetric 60 Degree Beam - 120 Degree spread
- SMB**<sup>2</sup> | Symmetric 30 Degree Beam - 60 Degree spread

<sup>1</sup> Delivered lumens are 90% of the output shown under Light Source; see IES file

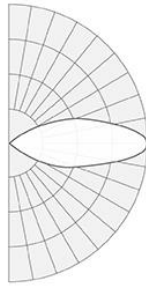
<sup>2</sup> Delivered lumens are 104% of the output shown under Light Source; see IES file



FT



SMA



SMB

## I - OPTIONS

---

**F** | Fusing

## Standard Finishes

---

The colors shown are representative. Their actual appearance may vary due to differences in display settings. You can request color chips by emailing [contact@spilighting.com](mailto:contact@spilighting.com). Please note, finishes may not be available in all configurations.

### Anodized



## Specialty Finishes

---



More RAL®, Pantone®, and custom finishes are available upon request. Setup fee and additional lead time applies. Call factory for details.