

IMPORTANT SAFETY AND INSTALLATION INSTRUCTIONS

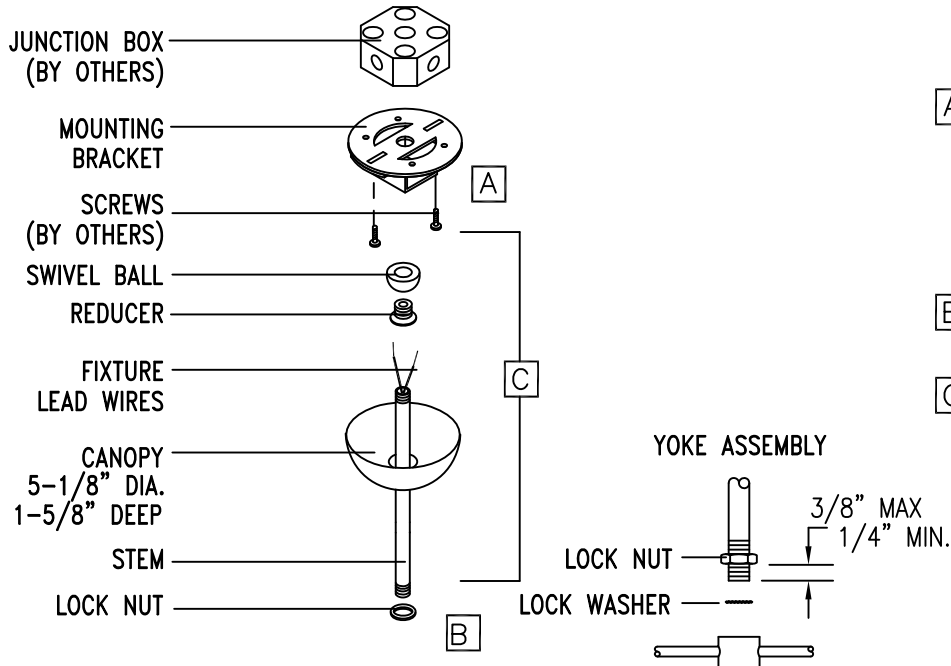
WARNING: Risk of fire and electric shock. This product is to be installed by a qualified electrician only.

CAUTION: When using electrical equipment, basic safety precautions should always be followed including the following: Read all instructions carefully before installation and save

for future use. Make sure installation and all connections are in accordance with National Electrical Code and any local regulations. To avoid possible electrical shock, be sure that power supply is turned off before installing or servicing this fixture. Servicing should be performed by qualified service personnel.

These instructions do not claim to cover all details or variations. When additional information is desired, please contact your SPI representative.

SAM40 40 DEGREE SWIVEL AND CANOPY



SAM40 includes 40° swivel mount assembly.

- A** Mount bracket to ears of junction box with screws (by others).

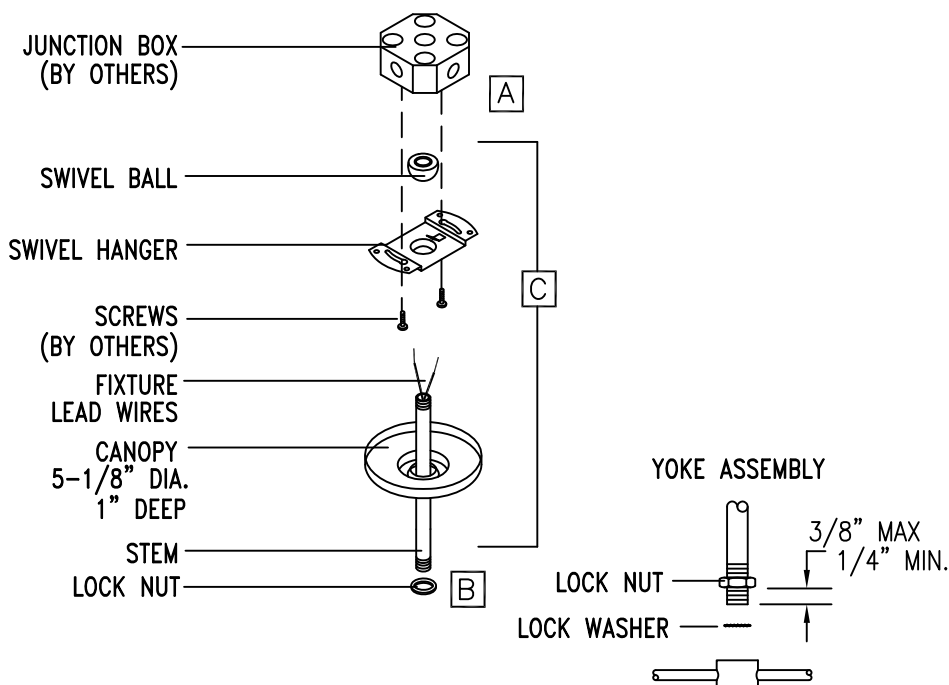
CAUTION: On sloped ceilings open side of bracket must be oriented toward upside of slope. Remove and discard swivel on stem when provided.

- B** Feed wires through stem. Tighten stem into yoke or coupler with lock nut and washer.

- C** Feed wires through these parts and assemble. Seat swivel ball groove into bracket tab. Connect lamp lead wires to remote mounted ballast wires with wire nuts (by others). Secure canopy by twisting to engage screws, or tabs, in bracket. Tighten screws.

For remote mount ballast instructions, see back page.

SAM30 30 DEGREE SWIVEL AND CANOPY



SAM30 includes 30° swivel mount assembly.

- A** Assemble screws (by others) to ears of junction box. Do not tighten. Remove and discard swivel on stem when provided.

- B** Feed wires through stem. Tighten stem into yoke or coupler with lock nut and washer.

- C** Feed wires through these parts, assemble and thread stem into swivel ball. Twist lock swivel hanger to junction box and tighten screws. Connect lamp lead wires to remote mounted ballast wires with wire nuts (by others).

Secure canopy by pushing upward to engage fastening device.

For remote mount ballast instructions, see back page.

12/3/13 IS5389X