

IMPORTANT SAFETY AND INSTALLATION INSTRUCTIONS

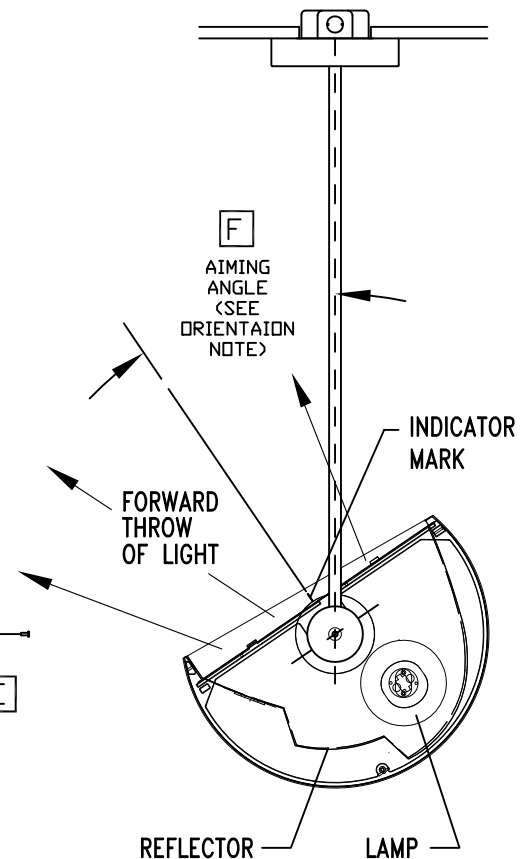
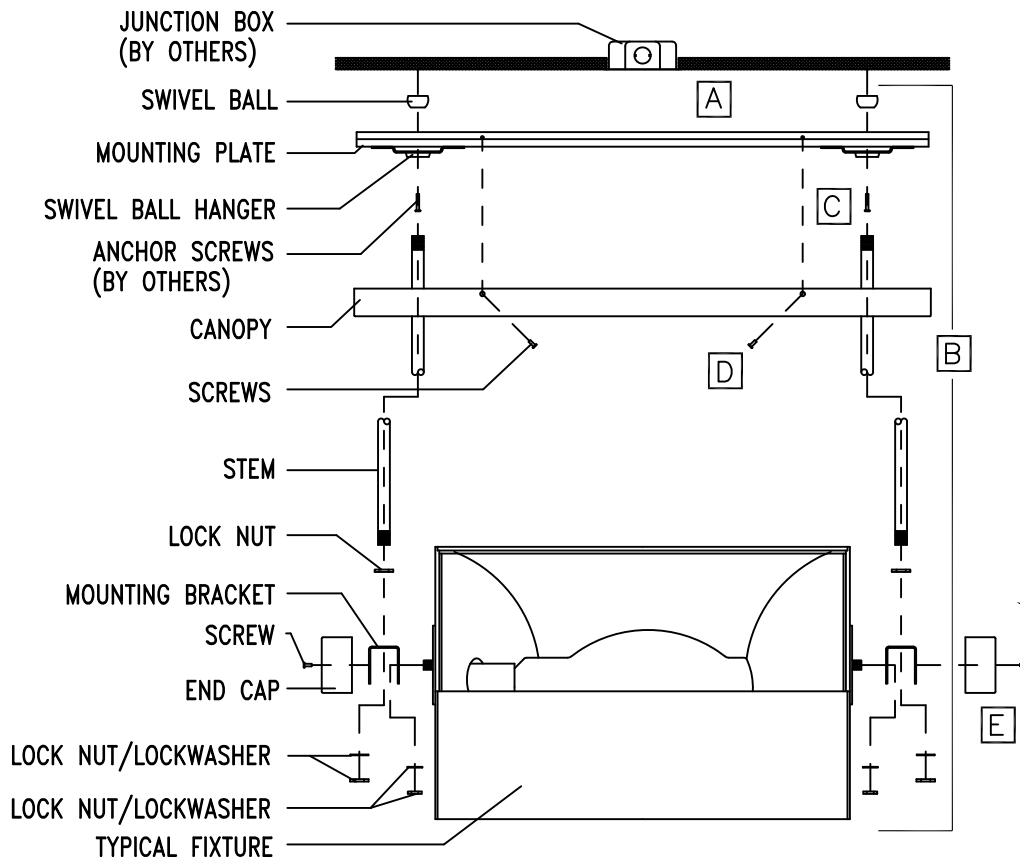
WARNING: Risk of fire and electric shock. This product is to be installed by a qualified electrician only.

CAUTION: When using electrical equipment, basic safety precautions should always be followed including the following: Read all instructions carefully before installation and save

for future use. Make sure installation and all connections are in accordance with National Electrical Code and any local regulations. To avoid possible electrical shock, be sure that power supply is turned off before installing or servicing this fixture. Servicing should be performed by qualified service personnel.

USE clear metal halide lamps. These instructions do not claim to cover all details or variations. When additional information is desired, please contact your SPI representative.

STEM MOUNT ECHO ROUND



A Use mounting plate to locate four (4) anchor holes by positioning center of mounting plate over junction box (by others). See auxiliary mounting detail on back.

B Feed lead wires through these parts and assemble.

Seat swivel ball groove into swivel hanger, adjust and tighten swivel ball retainer tab to secure swivel ball/fixture assembly.

C Attach fixture assembly to ceiling with mounting plate and anchor screws (by others). SEE ORIENTATION NOTE

Wire HID lamp leads to ballast lamp leads with wire nuts (by others).

D To secure canopy slide canopy up stems to ceiling, using screws provided. Secure to mounting plate.

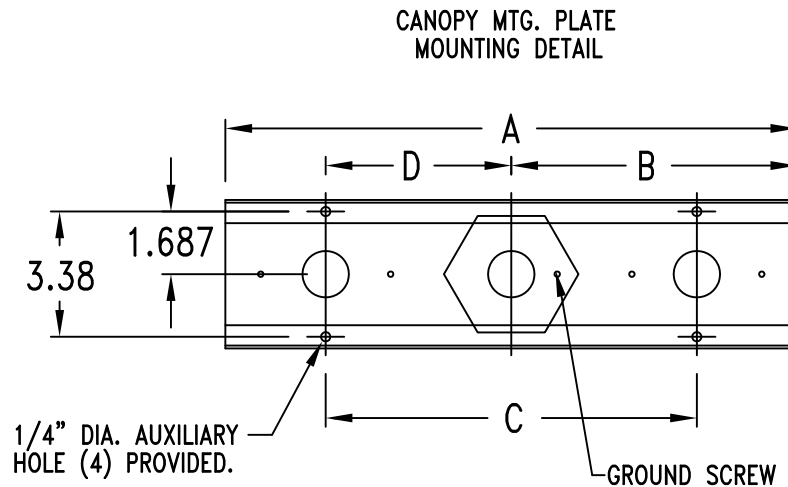
E Attach end caps with screws provided.

F Fixture has indicator markings on housing to aid in aiming fixture. For custom aiming, loosen locking nuts, aim fixture and lock in place with locking screws. See orientation note.

ORIENTATION NOTE

FIXTURE IS DESIGNED WITH AN ASYMETRIC, FORWARD THROW OF LIGHT. PLEASE NOTE ORIENTATION OF FIXTURE AND INSTALL IN DESIRED DIRECTION. USE INDICATOR MARKS TO HELP MATCH AIMING ANGLES BETWEEN MULTIPLE FIXTURES.

10/23/13
IS6040X-A

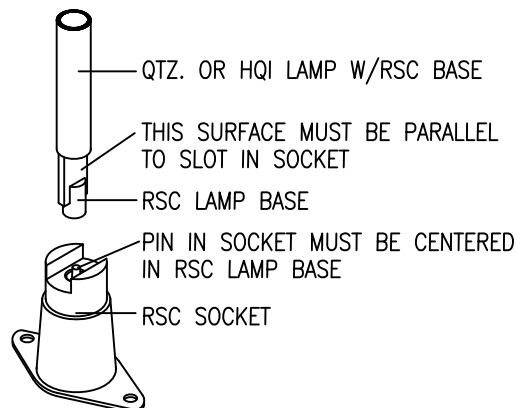


	DIMENSIONS			
	A	B	C	D
ECHO 5.0	17.000	8.500	11.750	5.875
ECHO 6.0 (12")	18.50	9.250	13.250	6.625
ECHO 6.0 (19")	25.875	12.938	20.625	10.313
ECHO 6.0 (26.5")	33.000	16.500	27.750	13.875
ECHO 9.0	22.250	11.125	17.000	8.500
ECHO 16.5	29.500	14.750	24.250	12.125
ECHO 9.0	34.000	17.000	28.750	14.375

LAMPING NOTES:

Prior to dimming fluorescent lamps, operate lamps under normal conditions for 100 hours to prevent premature lamp failure.

Lamp, socket and/or ballast failure due to improper seating of lamps in RSC sockets, may cause hazardous situations. See detail below for proper installation of lamp.



10/23/13
IS6040X-B