

# IMPORTANT SAFETY AND INSTALLATION INSTRUCTIONS

**WARNING:** Risk of fire and electrical shock. This product is to be installed by a qualified electrician only.

**CAUTION:** When using electrical equipment, basic safety precautions should always be followed including the following: Read all instructions carefully before installation and save

for future use. Make sure installation and all connections are in accordance with National Electrical Code and any local regulations. To avoid possible electrical shock, be sure that power supply is turned off before installing or servicing this fixture. Servicing should be performed by qualified service personnel.

These instructions do not claim to cover all details or variations. When additional information is desired, please contact your SPI representative.

## ENERGIZED CABLE INSTALLATION - (BCE)

### ( ACCESSIBLE CEILING )

1. Locate mounting locations using actual fixture in desired location
2. Drill 7/16" hole through non-conductive ceiling plane.
3. Mount button canopy through hole and assemble components as shown in Figure A.
4. Secure hanger bracket to structure. ( Auxiliary Cable Support, By Others ).
5. Feed Air Craft Cable(s) through cable gripper, and pull to desired height.
6. Make necessary height adjustments to level fixture.
7. Cut excess aircraft cable to approximately 6" and slide on heat shrink tubing.
8. Using the provided WAGO lever lock, make electrical connection above ceiling plane per local codes. See Figure B.

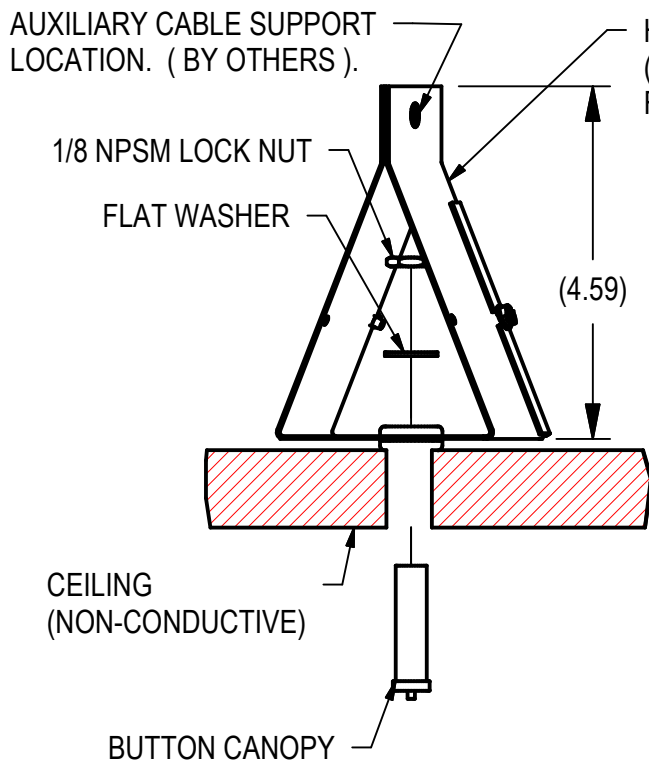


FIGURE A

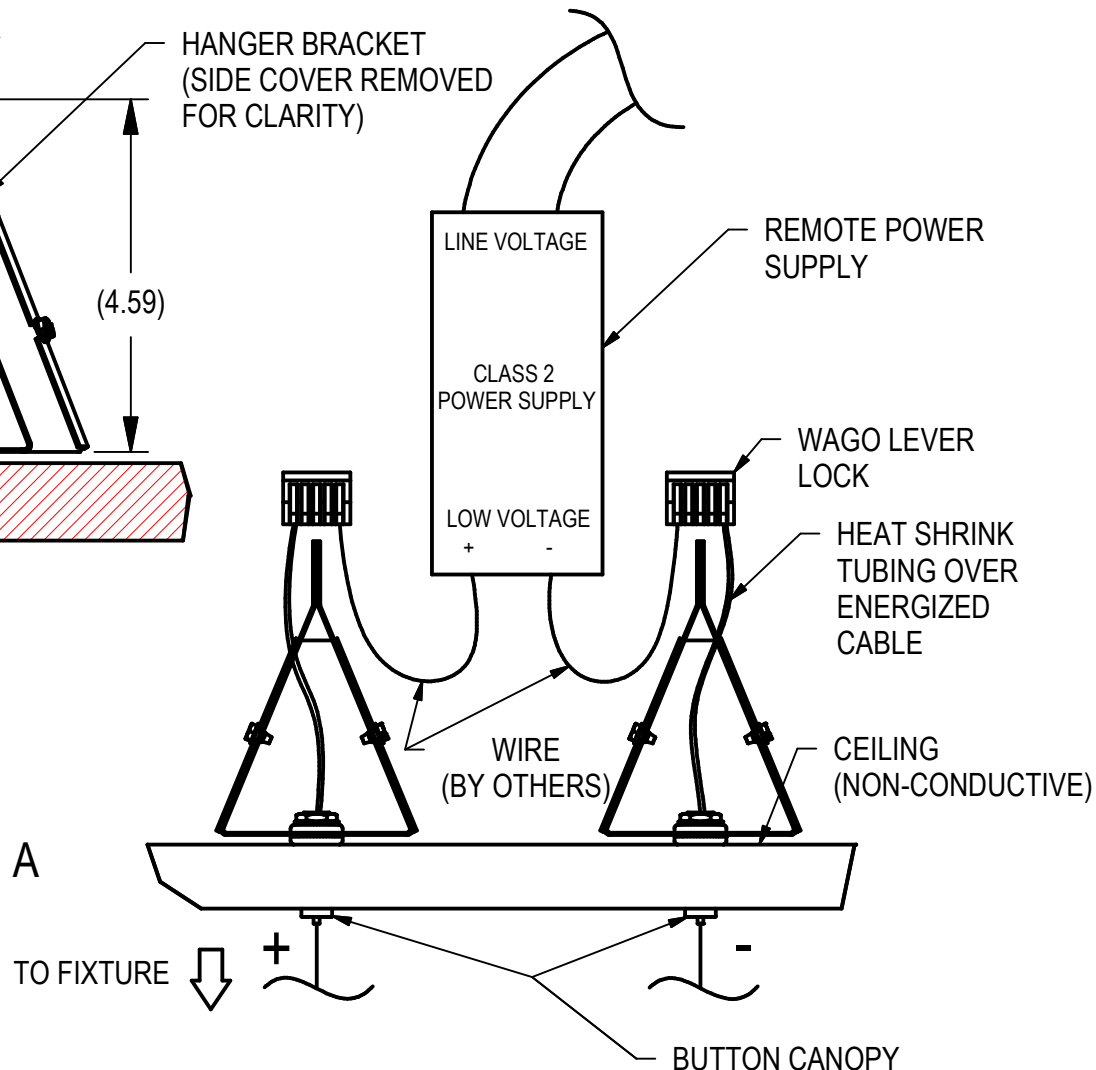


FIGURE B

REV.  
12/07/20  
IS99778X

# IMPORTANT SAFETY AND INSTALLATION INSTRUCTIONS

**WARNING:** Risk of fire and electrical shock. This product is to be installed by a qualified electrician only.

**CAUTION:** When using electrical equipment, basic safety precautions should always be followed including the following: Read all instructions carefully before installation and save

for future use. Make sure installation and all connections are in accordance with National Electrical Code and any local regulations. To avoid possible electrical shock, be sure that power supply is turned off before installing or servicing this fixture. Servicing should be performed by qualified service personnel.

These instructions do not claim to cover all details or variations. When additional information is desired, please contact your SPI representative.

## ENERGIZED CABLE INSTALLATION - (CEC)

1. Locate J-Boxes in desired location. Unless otherwise specified, mounting centers (MC) is 48". See Figure A.
2. Secure cross bar assembly onto J-Box (hardware by others)
3. Feed Air Craft Cable(s) through canopy cover plate and cable gripper on cross brace assembly. Pull to desired height.
4. Make necessary height adjustments to level fixture.
5. Cut excess aircraft cable to approximately 6" and slide on heat shrink tubing.
6. Using the provided WAGO lever lock, make electrical connection per local code.
7. Tuck excess wires into the J-Box and secure canopy(s) to the cross bar(s) by snapping into place.

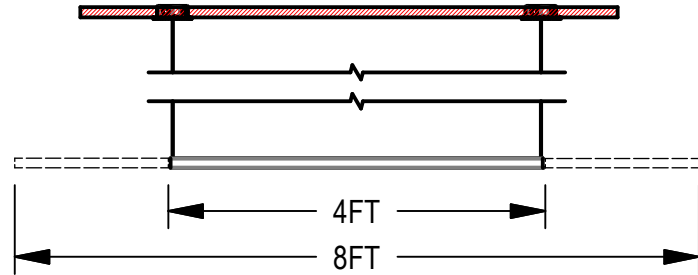


FIGURE A

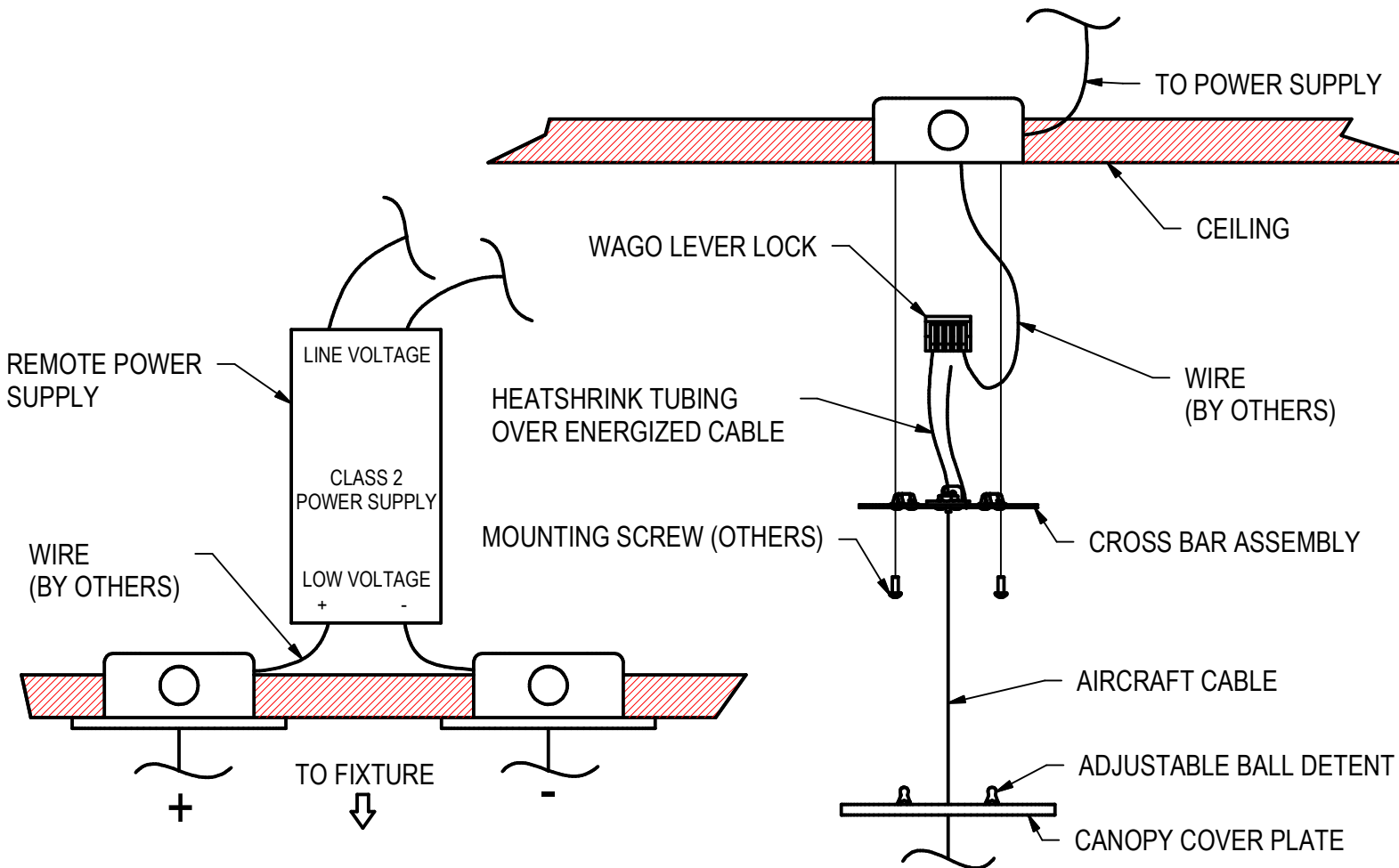


FIGURE C

FIGURE B

REV.  
12/07/20  
IS99778X