

IMPORTANT SAFETY AND INSTALLATION INSTRUCTIONS

WARNING: Risk of fire and electrical shock. This product is to be installed by a qualified electrician only.

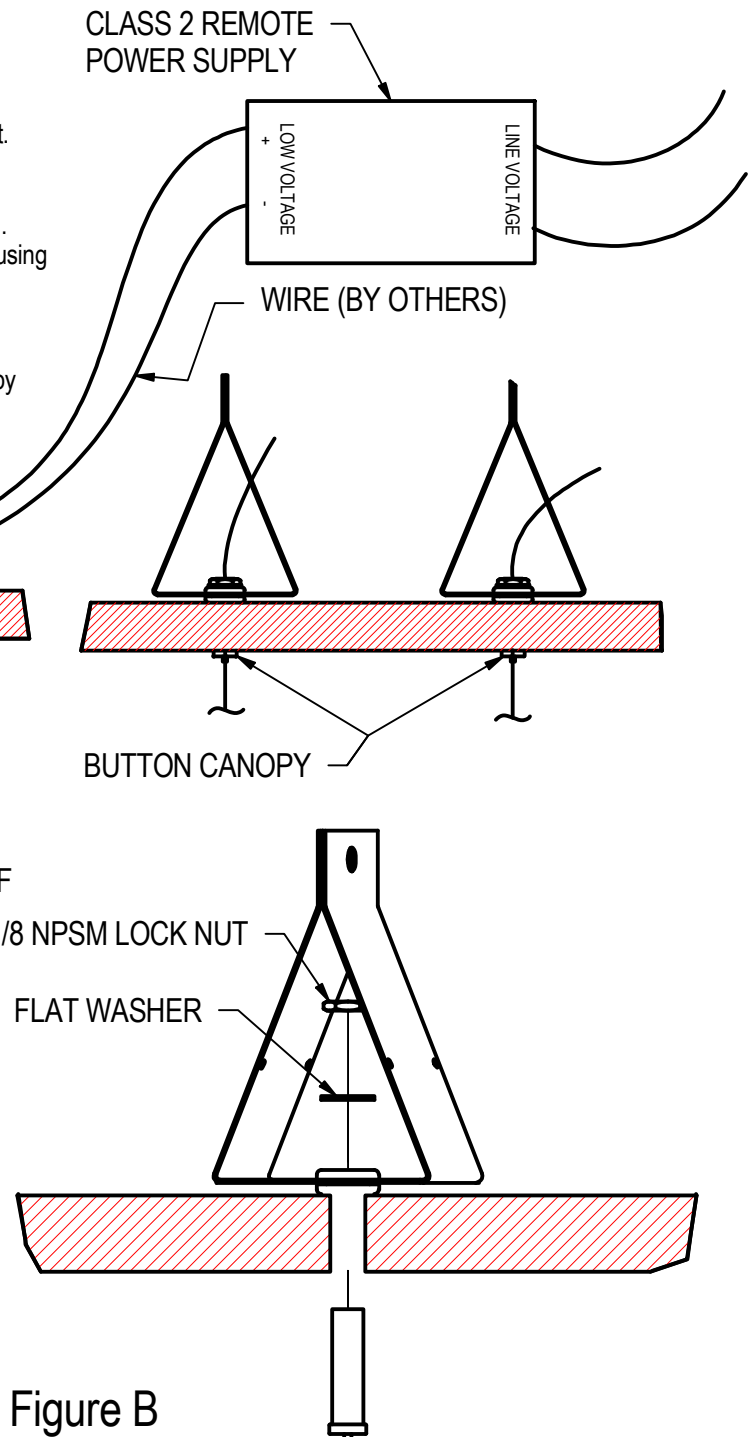
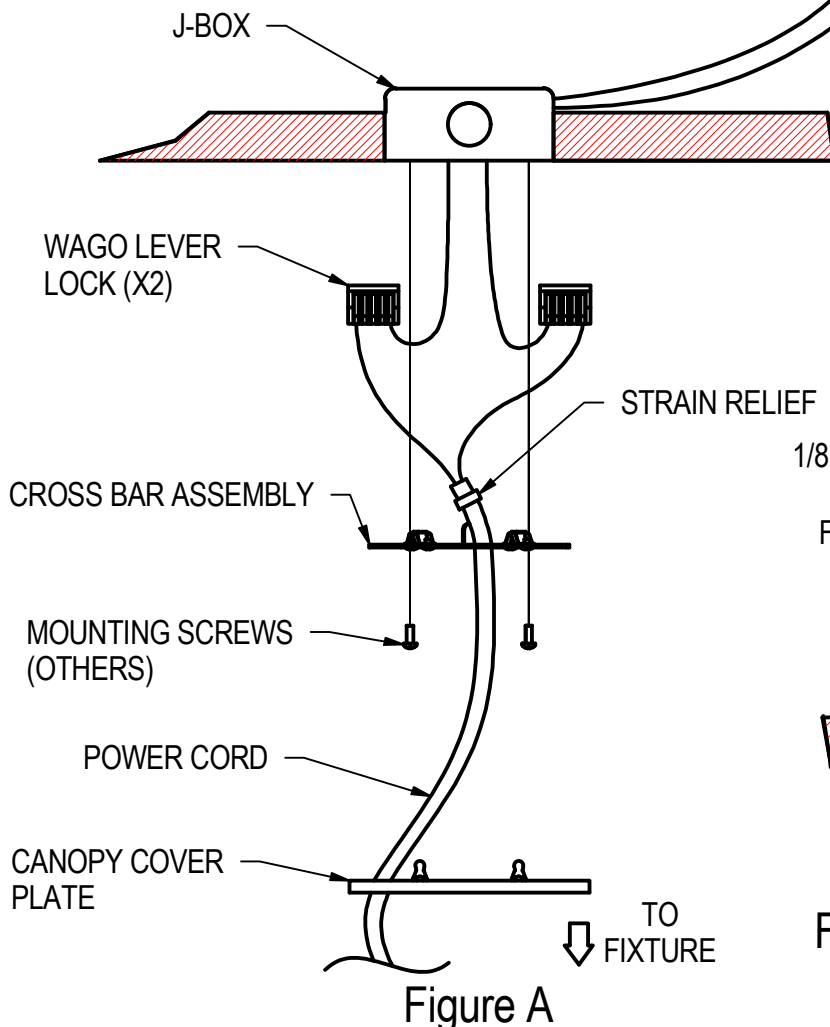
CAUTION: When using electrical equipment, basic safety precautions should always be followed including the following: Read all instructions carefully before installation and save

for future use. Make sure installation and all connections are in accordance with National Electrical Code and any local regulations. To avoid possible electrical shock, be sure that power supply is turned off before installing or servicing this fixture. Servicing should be performed by qualified service personnel.

These instructions do not claim to cover all details or variations. When additional information is desired, please contact your SPI representative.

INSTALLATION - (BCP)

1. Locate mounting locations using actual fixture(s) in desired location(s)
2. Drill 7/16" hole through ceiling.
3. Mount button canopy through hole as shown in Figure B.
4. Feed Air Craft Cable(s) through cable gripper, and pull to desired height.
5. Make necessary height adjustments to level fixture.
6. Cut excess aircraft cable.
7. Locate J-Box in desired location, independent of button canopy location.
8. Feed Cord through canopy cover plate and make electrical connection using provided WAGO lever locks.
9. Secure cross bar assembly onto J-Box (hardware by others)
10. Secure power cord using provided strain relief.
11. Tuck excess wires into the J-Box and secure canopy to the cross bar by snapping into place.



05/06/19
IS100085X

IMPORTANT SAFETY AND INSTALLATION INSTRUCTIONS

WARNING: Risk of fire and electrical shock. This product is to be installed by a qualified electrician only.

CAUTION: When using electrical equipment, basic safety precautions should always be followed including the following: Read all instructions carefully before installation and save

for future use. Make sure installation and all connections are in accordance with National Electrical Code and any local regulations. To avoid possible electrical shock, be sure that power supply is turned off before installing or servicing this fixture. Servicing should be performed by qualified service personnel.

These instructions do not claim to cover all details or variations. When additional information is desired, please contact your SPI representative.

INSTALLATION - (CPC)

1. Locate J-Boxes in desired location. Unless otherwise specified, mounting centers (MC) is 48". See Figure A.
2. Secure cross bar assembly onto J-Box (hardware by others) Secure cross bar assembly onto J-Box (hardware by others)
3. Feed Air Craft Cable(s) through cable gripper on cross brace assembly, and pull to desired height.
4. Make necessary height adjustments to level fixture.
5. Cut excess aircraft cable.
6. Feed power cord through canopy cover and cross brace assembly, and secure cord using provided strain relief.
7. Using the provided WAGO lever lock, make electrical connection per local code.
8. Tuck excess wires into the J-Box and secure canopy(s) to the cross bar(s) by snapping into place.

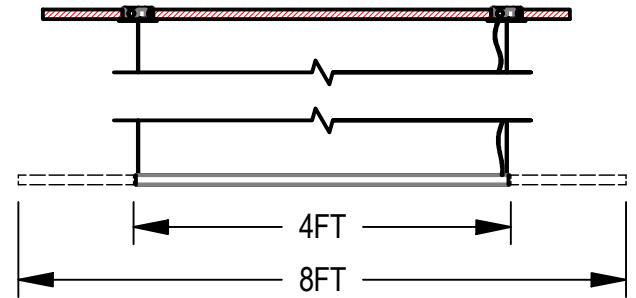


FIGURE A

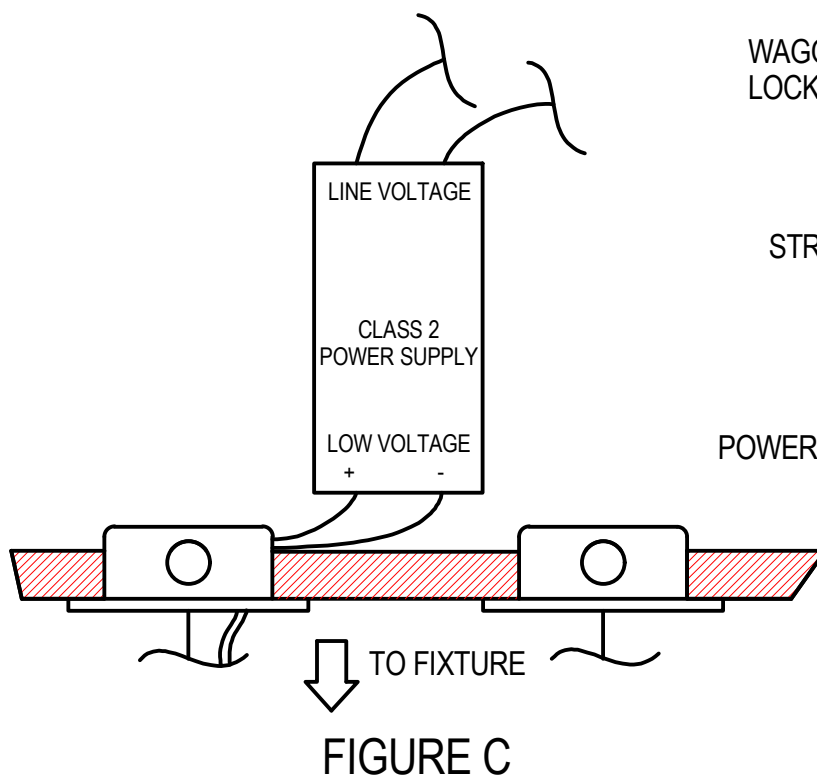


FIGURE C

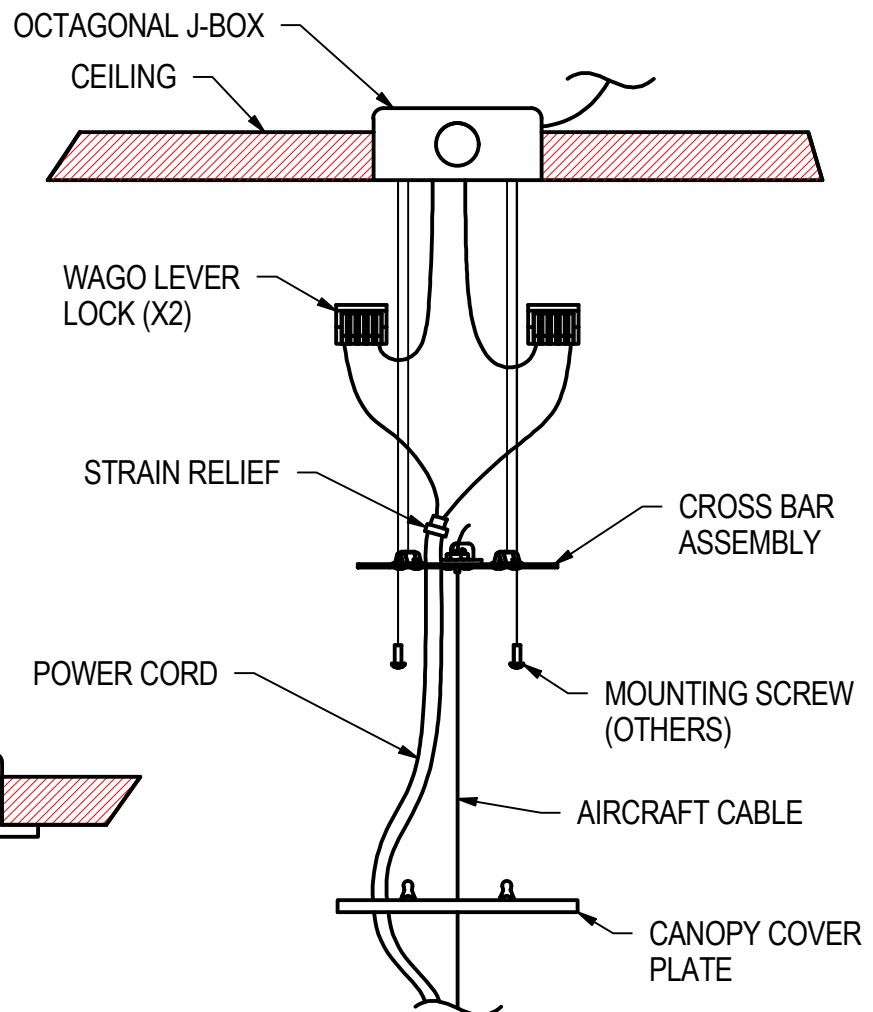


FIGURE B

05/06/19
IS100085X