

# IMPORTANT SAFETY AND INSTALLATION INSTRUCTIONS

**WARNING:** Risk of fire and electrical shock. This product is to be installed by a qualified electrician only.

**CAUTION:** When using electrical equipment, basic safety precautions should always be followed including the following: Read all instructions carefully before installation and save

for future use. Make sure installation and all connections are in accordance with National Electrical Code and any local regulations. To avoid possible electrical shock, be sure that power supply is turned off before installing or servicing this fixture. Servicing should be performed by qualified service personnel.

These instructions do not claim to cover all details or variations. When additional information is desired, please contact your SPI representative.

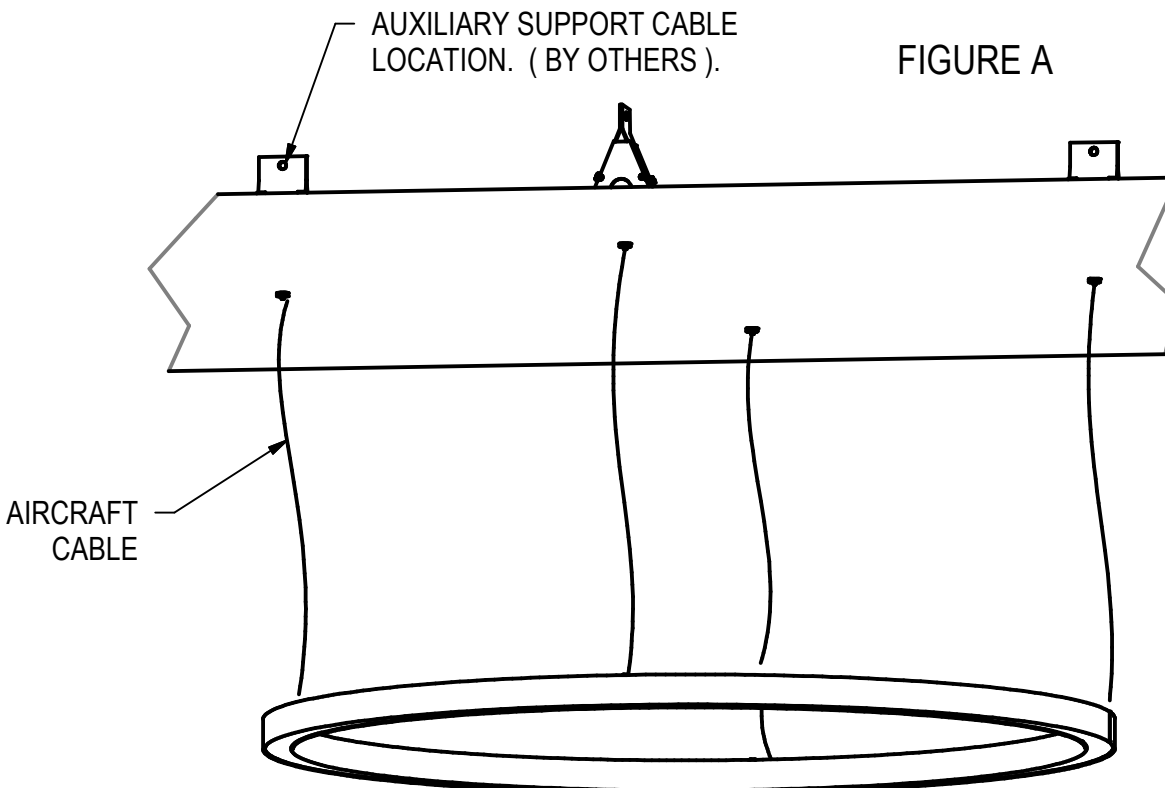
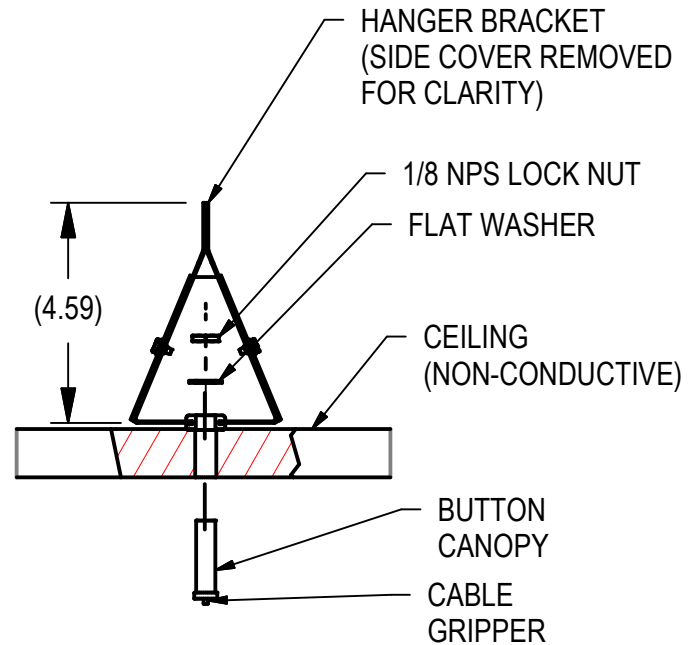
## ZYNN RING - BCE

### INSTALLATION:

#### ( ACCESSIBLE CEILING )

1. LOCATE MOUNTING LOCATIONS USING ACTUAL FIXTURE IN DESIRED LOCATION. NUMBER OF CABLES AND MOUNTS MAY VARY.
2. DRILL 7/16" HOLES THROUGH NON-CONDUCTIVE CEILING PLANE.
3. MOUNT BUTTON CANOPY THROUGH EACH HOLES AND ASSEMBLE COMPONENTS AS SHOWN IN FIGURE A.
4. SECURE HANGER BRACKETS TO STRUCTURE.  
( AUXILIARY SUPPORT CABLE LOCATION, BY OTHERS ).
5. INSERT AIRCRAFT CABLE INTO CABLE GRIPPERS AND ADJUST TO DESIRED FIXTURE SUSPENSION HEIGHT. LEVEL FIXTURE.

(CONTINUED ON PAGE 2)



REV.  
12/07/20  
IS100377X

# IMPORTANT SAFETY AND INSTALLATION INSTRUCTIONS

**WARNING:** Risk of fire and electrical shock. This product is to be installed by a qualified electrician only.

**CAUTION:** When using electrical equipment, basic safety precautions should always be followed including the following: Read all instructions carefully before installation and save

for future use. Make sure installation and all connections are in accordance with National Electrical Code and any local regulations. To avoid possible electrical shock, be sure that power supply is turned off before installing or servicing this fixture. Servicing should be performed by qualified service personnel.

These instructions do not claim to cover all details or variations. When additional information is desired, please contact your SPI representative.

## ZYNN RING - BCE

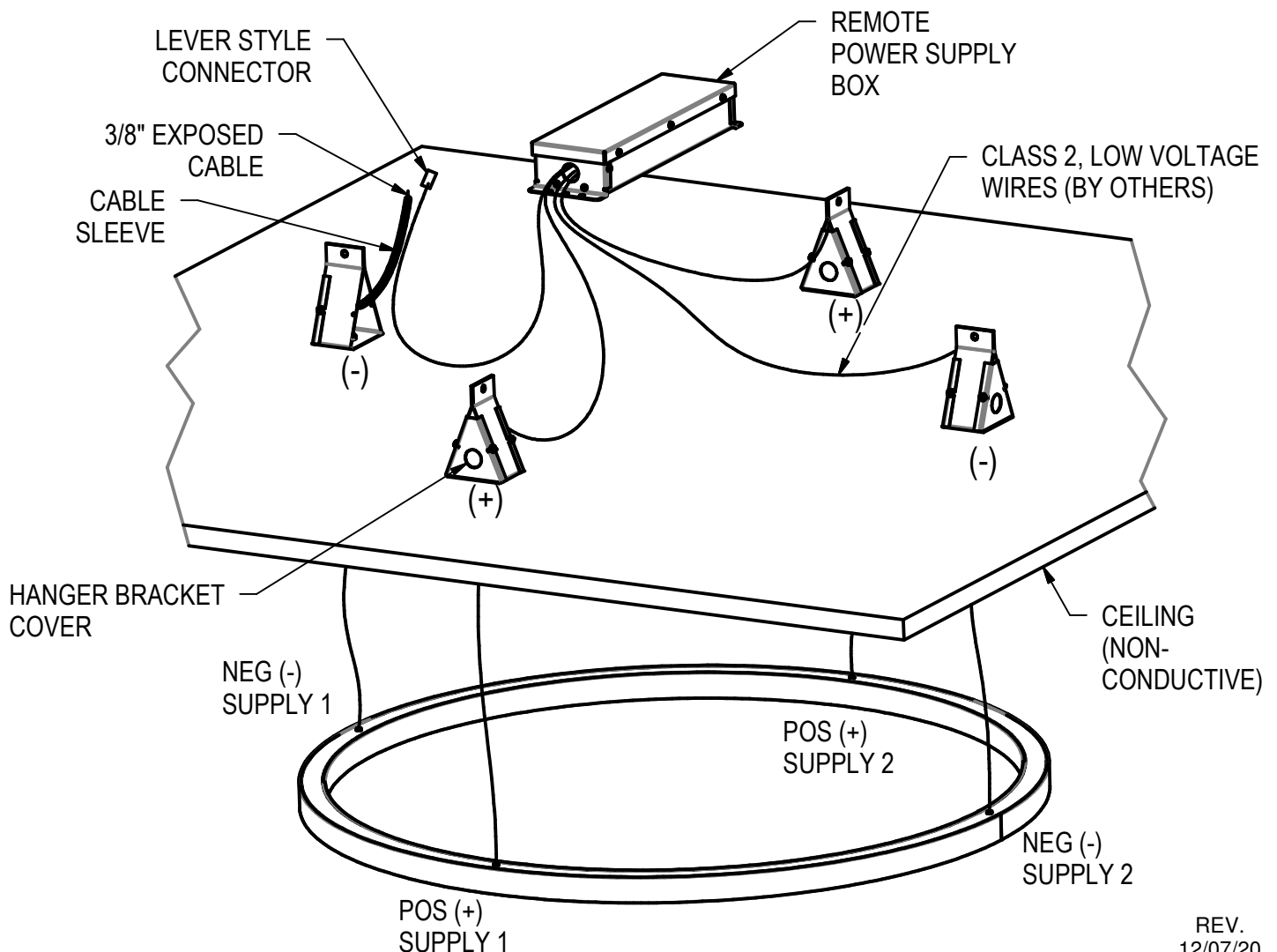
(CONTINUED FROM PAGE 1)

6. CUT SUPPLIED WIRE SLEEVING TO EQUAL LENGTHS FOR EACH CABLE. SLIDE SLEEVE OVER THE EXPOSED CABLE ABOVE THE CEILING PLANE. TRIM CABLE TO APPROXIMATELY 3/8" EXPOSED FROM END OF SLEEVING.

7. USING THE SUPPLIED LEVER CONNECTORS, CONNECT END OF EACH AIRCRAFT CABLE TO THE POSITIVE AND NEGATIVE LEADS FROM THE POWER SUPPLIES. THE POLARITY OF THE CABLE, (POS +) OR (NEG -), MUST MATCH THE POLARITY OF THE POWER SUPPLY WIRES. AIRCRAFT CABLES LABELED WITH THE SAME SUPPLY NUMBER MUST BE ATTACHED TO THE SAME POWER SUPPLY.

8. REPLACE HANGER BRACKET COVERS AFTER COMPLETION OF WIRING.

9. CONNECT THE HIGH VOLTAGE SUPPLY LEADS TO THE BRANCH CIRCUIT. WIRE OR CAP-OFF DIMMING LEADS IF APPLICABLE.



REV.  
12/07/20  
IS100377X