

IMPORTANT SAFETY AND INSTALLATION INSTRUCTIONS

WARNING: Risk of fire and electrical shock. This product is to be installed by a qualified electrician only.

CAUTION: When using electrical equipment, basic safety precautions should always be followed including the following: Read all instructions carefully before installation and save

for future use. Make sure installation and all connections are in accordance with National Electrical Code and any local regulations. To avoid possible electrical shock, be sure that power supply is turned off before installing or servicing this fixture. Servicing should be performed by qualified service personnel.

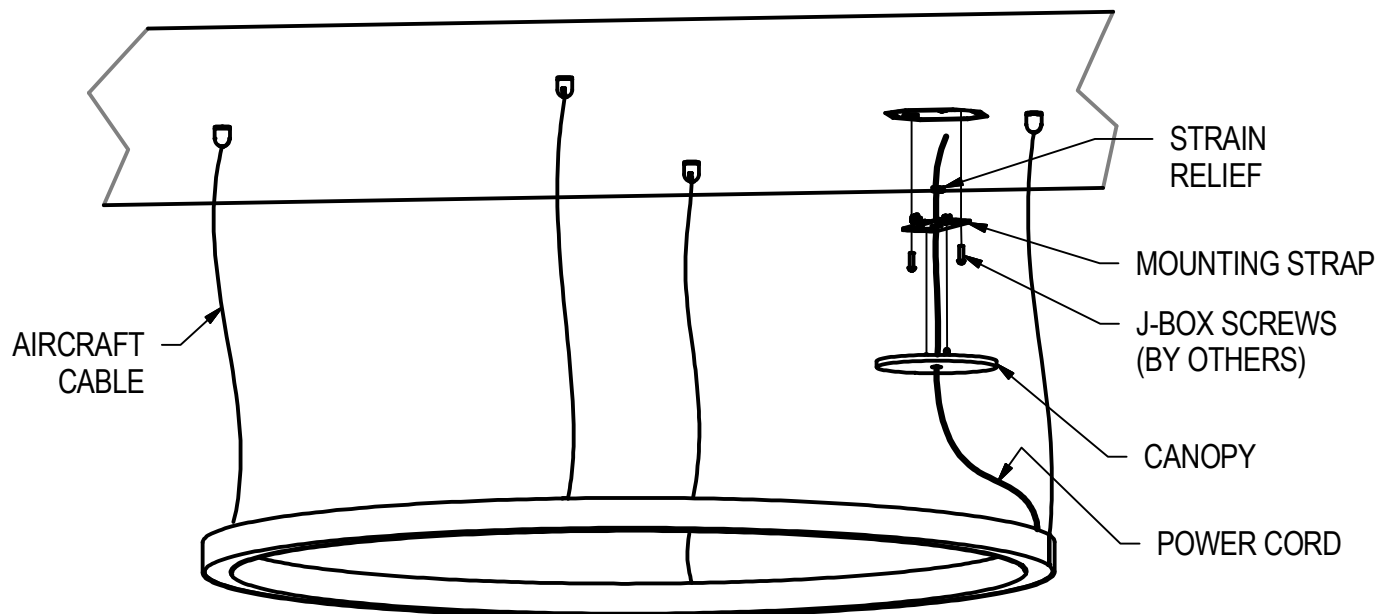
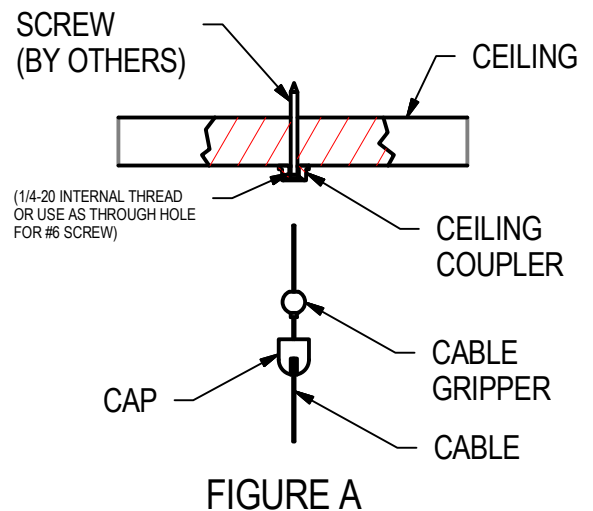
These instructions do not claim to cover all details or variations. When additional information is desired, please contact your SPI representative.

ZYNN RING - BCP

INSTALLATION:

1. LOCATE MOUNTING LOCATIONS USING ACTUAL FIXTURE IN DESIRED LOCATION. NUMBER OF CABLES AND MOUNTS MAY VARY.
2. MOUNT CEILING COUPLER TO CEILING USING SCREW (BY OTHERS) AS SHOWN IN FIGURE A. ALTERNATIVE IS TO USE 1/4-20 THREADED ROD TO ATTACHED CEILING COUPLER.
3. FEED AIRCRAFT CABLE THROUGH CAP AND INTO CABLE GRIPPER. THREAD CAP ONTO CEILING COUPLER. ADJUST FIXTURE TO DESIRED SUSPENSION HEIGHT. LEVEL FIXTURE.
4. FEED POWER CORD THROUGH HOLE IN CANOPY AND THEN THROUGH CENTER HOLE OF MOUNTING STRAP. TRIM CORD TO DESIRED LENGTH AND STRIP WIRES. ATTACH SUPPLIED STRAIN RELIEF TO CORD ABOVE MOUNTING STRAP.

(CONTINUED ON PAGE 2)



01/29/18
IS100656X

IMPORTANT SAFETY AND INSTALLATION INSTRUCTIONS

WARNING: Risk of fire and electrical shock. This product is to be installed by a qualified electrician only.

CAUTION: When using electrical equipment, basic safety precautions should always be followed including the following: Read all instructions carefully before installation and save

for future use. Make sure installation and all connections are in accordance with National Electrical Code and any local regulations. To avoid possible electrical shock, be sure that power supply is turned off before installing or servicing this fixture. Servicing should be performed by qualified service personnel.

These instructions do not claim to cover all details or variations. When additional information is desired, please contact your SPI representative.

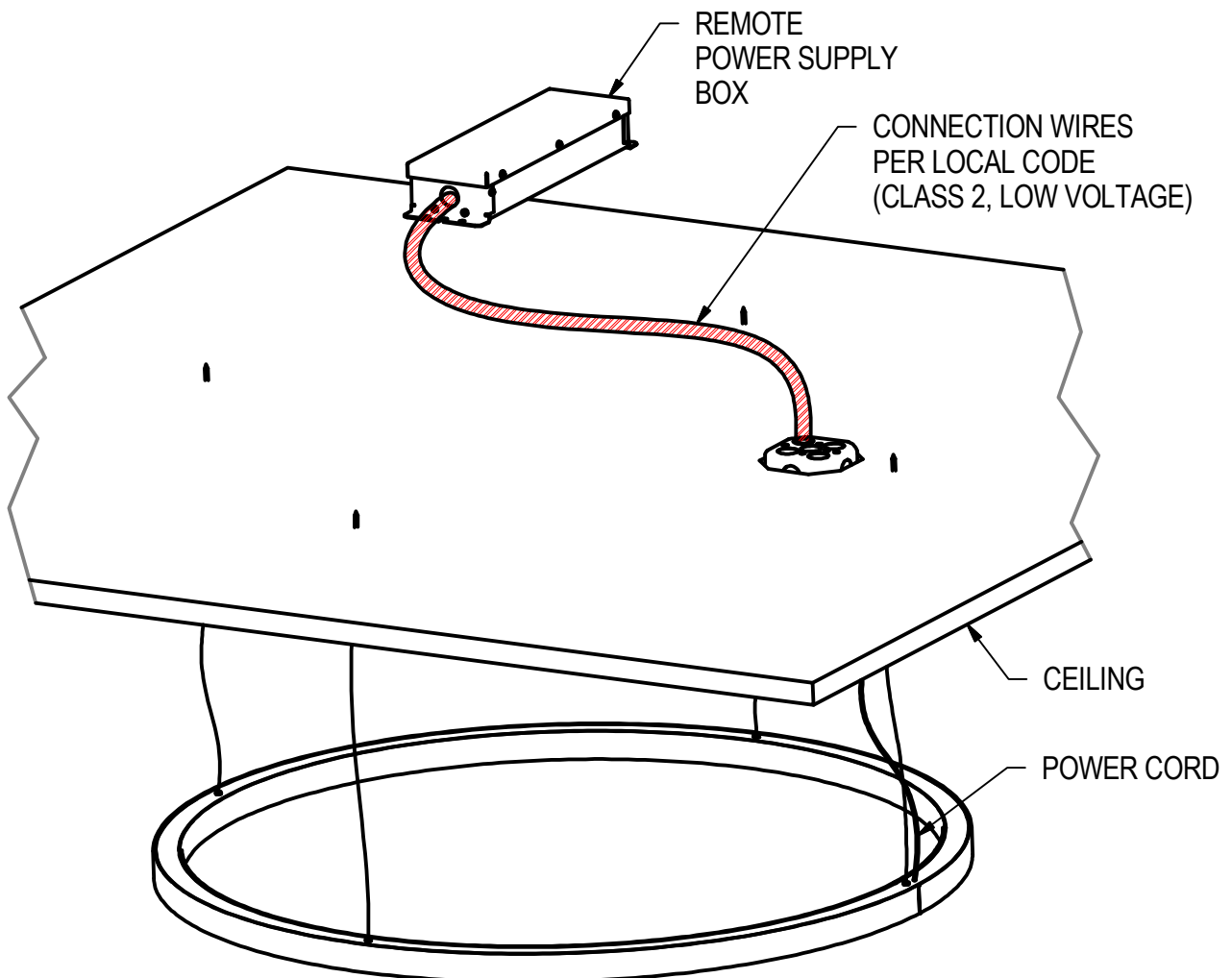
ZYNN RING - BCP

(CONTINUED FROM PAGE 1)

5. PER LOCAL CODE, CONNECT RED (POS +) AND BLACK (NEG -) PAIRS OF WIRES FROM THE POWER CORD TO THE RED (POS +) AND BLUE (NEG -) WIRES OF THE POWER SUPPLIES. THE POLARITY OF THE CORD WIRES, (POS +) OR (NEG -), MUST MATCH THE POLARITY OF THE POWER SUPPLY WIRES. WIRES IDENTIFIED WITH THE SAME TRACER STRIPE MUST BE ATTACHED TO THE SAME POWER SUPPLY.

6. CONNECT THE HIGH VOLTAGE SUPPLY LEADS TO THE BRANCH CIRCUIT. WIRE OR CAP-OFF DIMMING LEADS IF APPLICABLE.

7. ATTACH MOUNTING STRAP TO J-BOX WITH SCREW (BY OTHERS.) ALIGN CANOPY AND SNAP ONTO MOUNTING BRACKET.



01/29/18
IS100656X