

IMPORTANT SAFETY AND INSTALLATION INSTRUCTIONS

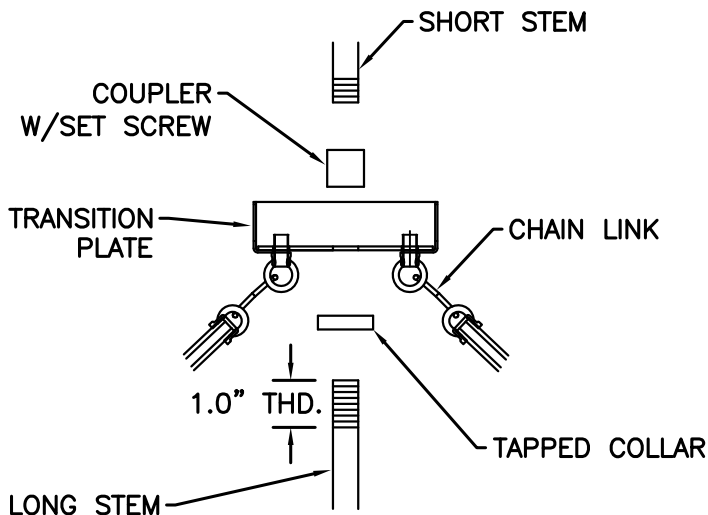
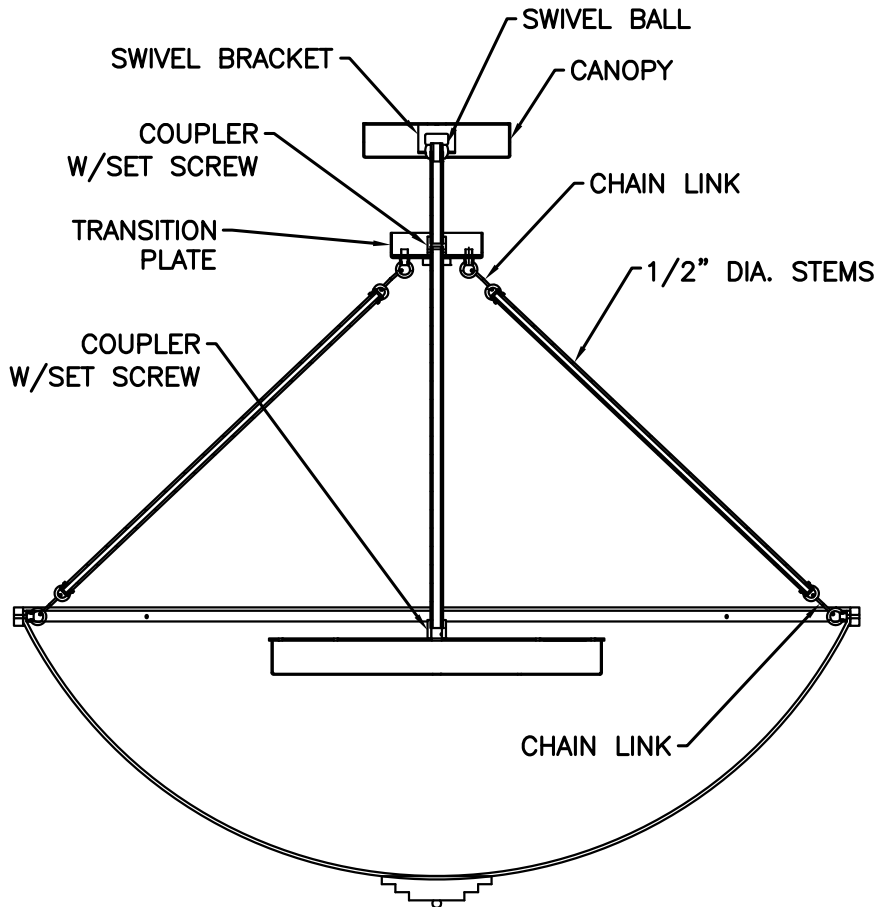
WARNING: Risk of fire and electric shock. This product is to be installed by a qualified electrician only.

CAUTION: When using electrical equipment, basic safety precautions should always be followed including the following: Read all instructions carefully before installation and save

for future use. Make sure installation and all connections are in accordance with National Electrical Code and any local regulations. To avoid possible electrical shock, be sure that power supply is turned off before installing or servicing this fixture. Servicing should be performed by qualified service personnel.

These instructions do not claim to cover all details or variations. When additional information is desired, please contact your SPI representative.

CAMBRIDGE PENDANT



TRANSITION PLATE DETAIL

- [1] Mount swivel bracket to ceiling.

CAUTION: On sloped ceilings, open side of bracket must be orientated toward upside of slope.

- [2] Feed lead wires through long stem. Tighten stem into coupler and secure with set screw.

- [3] Feed wires through transition plate. Place transition plate over long stem as shown.

- [4] Feed wires through the short stem with coupler first. Screw coupler onto long stem and secure with setscrew.

- [5] Feed wires through swivel ball and tighten onto stem.

- [6] Attach 1/2" dia. stems to transition plate with supplied links. Then, attach the other end of the stems to the eyeloops on the bowl with supplied links. Close links.

- [7] Hang complete lamp assembly by positioning swivel ball into mounting bracket. Seat swivel ball groove onto bracket tab to prevent rotation.

- [8] Connect lamp lead wires to supply wires with wire nuts (by others). Feed connections into junction box. Raise canopy and fasten with supplied screws.

11/26/13
IS47241X