

IMPORTANT SAFETY AND INSTALLATION INSTRUCTIONS

WARNING: Risk of fire and electrical shock. This product is to be installed by a qualified electrician only.

CAUTION: When using electrical equipment, basic safety precautions should always be followed including the following: Read all instructions carefully before installation and save

for future use. Make sure installation and all connections are in accordance with National Electrical Code and any local regulations. To avoid possible electrical shock, be sure that power supply is turned off before installing or servicing this fixture. Servicing should be performed by qualified service personnel.

These instructions do not claim to cover all details or variations. When additional information is desired, please contact your SPI representative.

SAFETY CABLE INSTALLATION

STEP 1:

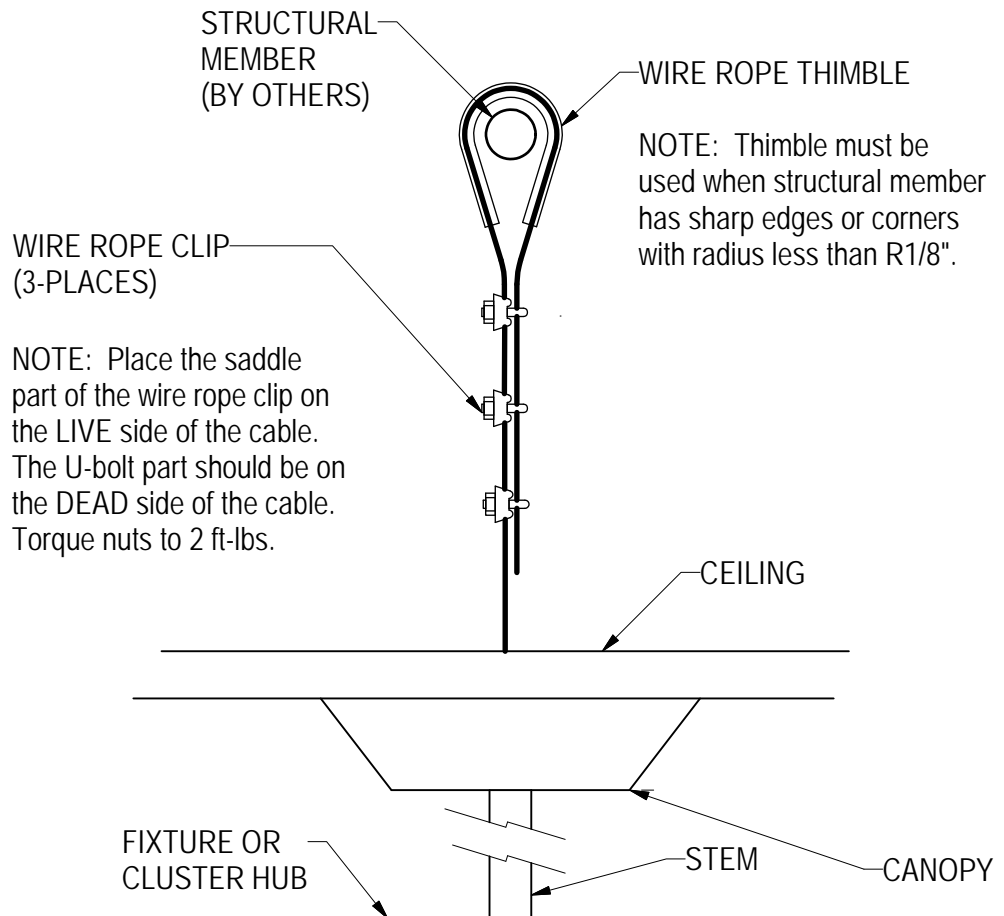
Feed Safety Cable, along with the fixture lead wires through the Stem and associated parts of the fixture. Make sure Safety Cable is secured in slot with screw. Make sure lock nut and washer are fastened to stem inside center hub. Hang the fixture per fixture installation sheet(s).

STEP 2:

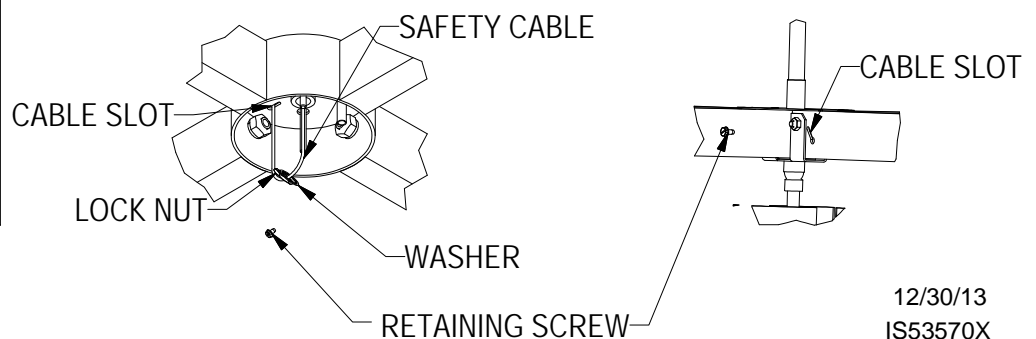
Loop Safety Cable over a Structural Member (by others). **NOTE:** The Thimble must be used when the structural member has sharp edges or corners with radius less than R1/8".

STEP 3:

Install Wire Rope Clips. Three (3) Clips must be used. Pull Cable tight so that no slack remains in the Cable. Tighten the Wire Rope Clips. Torque the nuts to 2 ft.-lbs.



CENTER CLUSTER HUB STYLE MAY VARY



12/30/13
IS53570X