

IMPORTANT SAFETY AND INSTALLATION INSTRUCTIONS

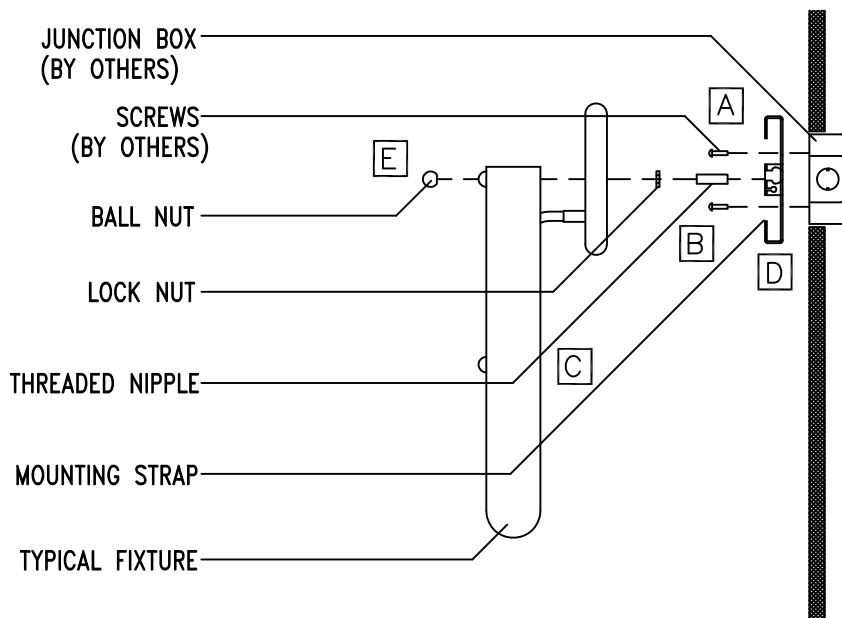
WARNING: Risk of fire and electric shock. This product is to be installed by a qualified electrician only.

CAUTION: When using electrical equipment, basic safety precautions should always be followed including the following: Read all instructions carefully before installation and save

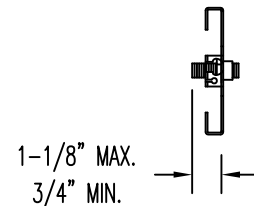
for future use. Make sure installation and all connections are in accordance with National Electrical Code and any local regulations. To avoid possible electrical shock, be sure that power supply is turned off before installing or servicing this fixture. Servicing should be performed by qualified service personnel.

These instructions do not claim to cover all details or variations. When additional information is desired, please contact your SPI representative.

WALL MOUNT



- A** Assemble threaded nipple, lock nut and mounting strap.



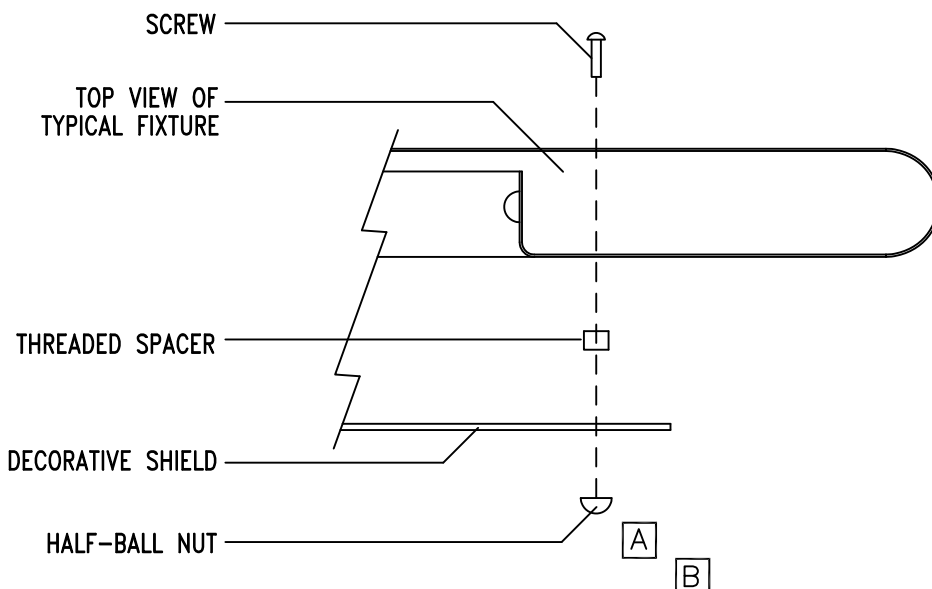
MOUNTING STRAP ASSEMBLY

- B** Fasten mounting strap assembly to ears of junction box (by others) with screws (by others).
C Install lamp which must be same as label.
D Wire typical fixture lead wires to supply lead wires with wire nuts (by others) and feed into junction box.
E Secure typical fixture to wall with ball nut. Tighten ball nut.

LAMPING NOTE:

Prior to dimming fluorescent lamps, operate lamps under normal conditions for 100 hours to prevent premature lamp failure.

DECORATIVE SHIELD ACCESSORY



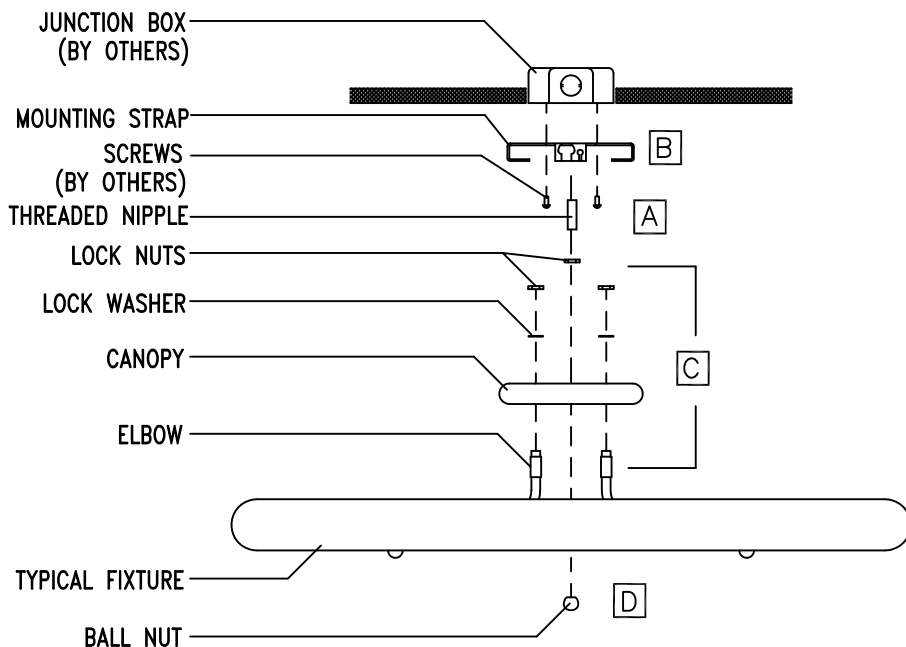
- A** Remove half-ball nuts from face of typical fixture by loosening and removing screws.

Discard screws and install new screws and threaded spacers.

- B** Secure decorative shield with half-ball nuts. Tighten nuts.

IS7507X-A

CEILING/WALL MOUNT

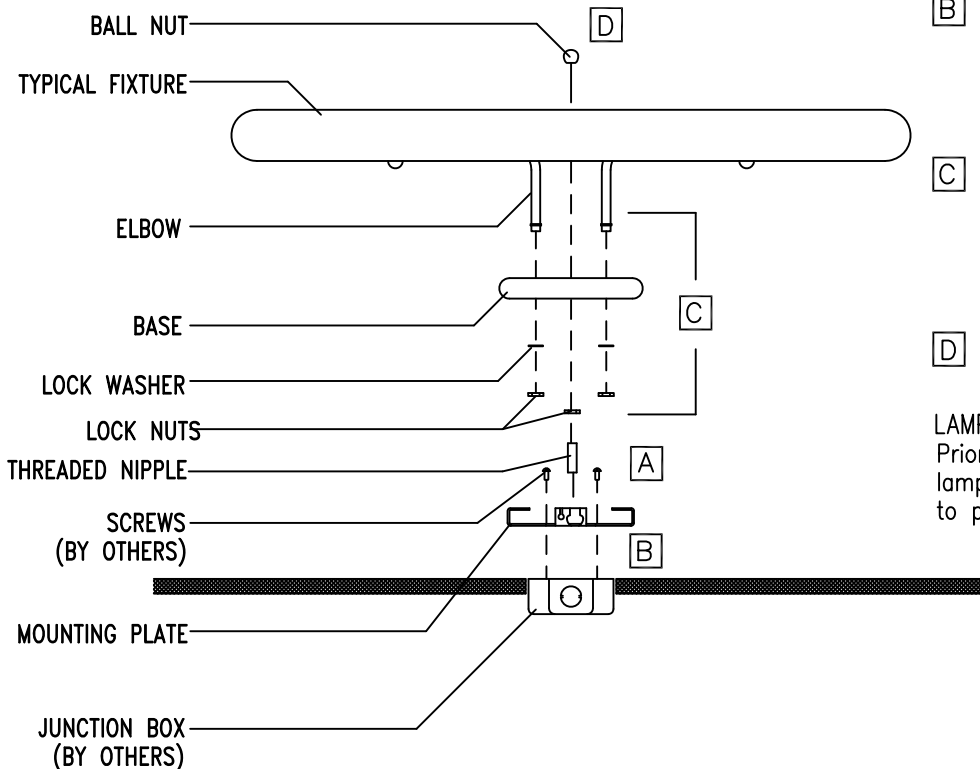


- A** Assemble threaded nipple, lock nut and mounting strap.
- B** Fasten mounting strap assembly to ears of junction box (by others) with screws (by others).
- Install lamps which must be same as label.
- C** Feed typical fixture lead wires through these parts and assemble. Tighten lock nuts.
- Connect fixture lead wires to supply wires with wire nuts (by others) and feed into junction box.
- D** Secure typical fixture to mounting plate assembly with ball nut. Tighten ball nut.

LAMPING NOTE:

Prior to dimming fluorescent lamps, operate lamps under normal conditions for 100 hours to prevent premature lamp failure.

PIER MOUNT



- A** Assemble threaded nipple, lock nut and mounting strap.
- B** Fasten mounting strap assembly to ears of junction box (by others) with screws (by others).
- Install lamps which must be same as label.
- C** Feed typical fixture lead wires through these parts and assemble. Tighten lock nuts.
- Connect fixture lead wires to supply wires with wire nuts (by others) and feed into junction box.
- D** Secure typical fixture to mounting plate assembly with ball nut. Tighten ball nut.

LAMPING NOTE:

Prior to dimming fluorescent lamps, operate lamps under normal conditions for 100 hours to prevent premature lamp failure.