

IMPORTANT SAFETY AND INSTALLATION INSTRUCTIONS

WARNING: Risk of fire and electrical shock. This product is to be installed by a qualified electrician only.

CAUTION: When using electrical equipment, basic safety precautions should always be followed including the following: Read all instructions carefully before installation and save

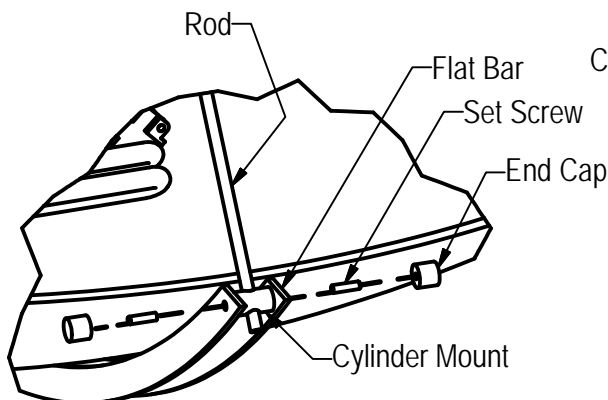
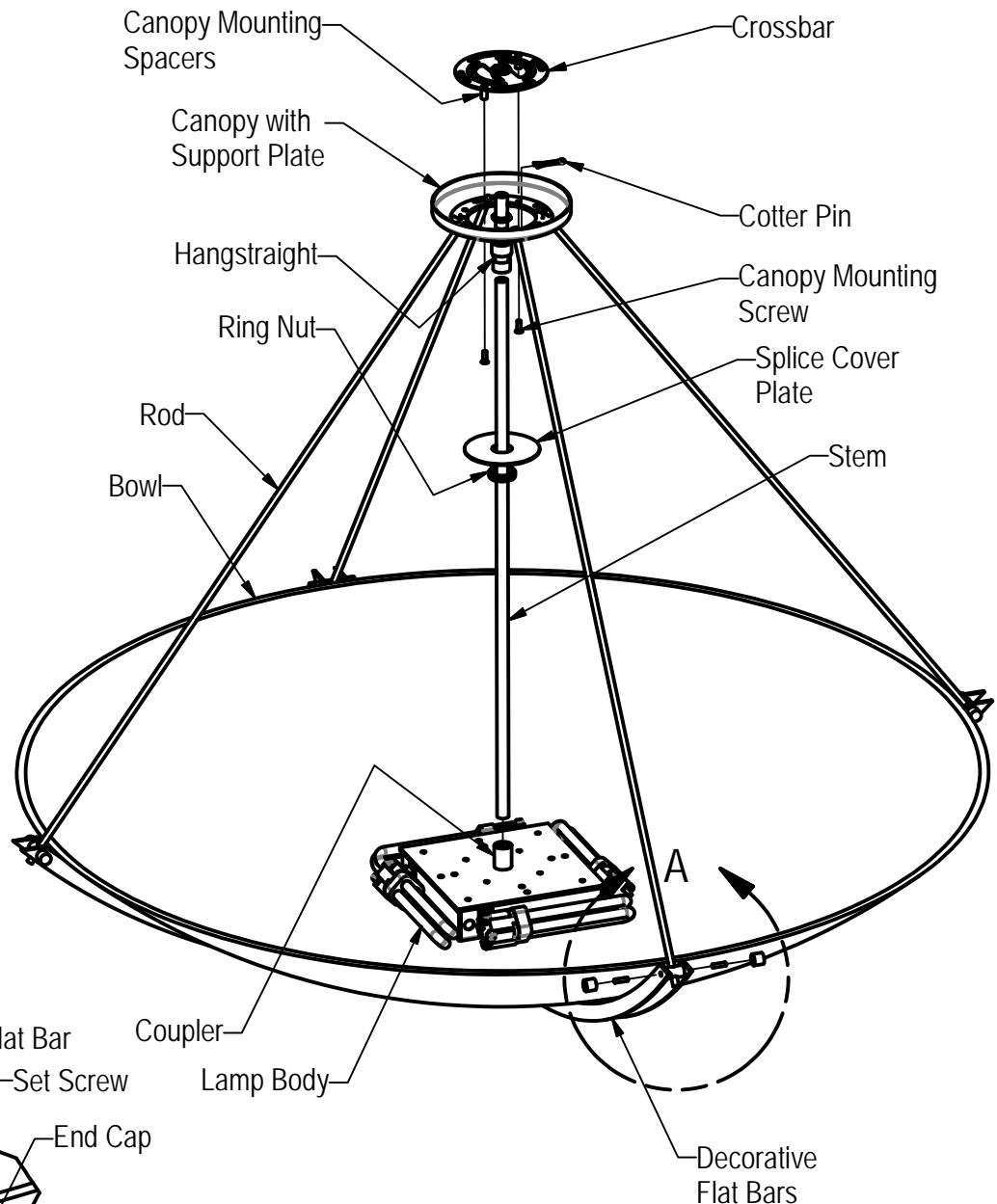
for future use. Make sure installation and all connections are in accordance with National Electrical Code and any local regulations. To avoid possible electrical shock, be sure that power supply is turned off before installing or servicing this fixture. Servicing should be performed by qualified service personnel.

These instructions do not claim to cover all details or variations. When additional information is desired, please contact your SPI representative.

ROD SUPPORTED PENDANT WITH CENTER STEM

INSTALLATION:

1. Secure crossbar to junction box with screws (by others). Note: The two canopy mounting provisions (#8-32 threaded spacers) are offset 45 degrees from the four angled stems.
2. Position the bowl within the decorative flat bars. Assemble the rod onto the flat bars as shown in "DETAIL A". The rods have two flats located near one end. This end is inserted through the mounting cylinders and secured by set screws. The set screws should seat on the flats. Thread the decorative end caps onto the exposed set screws. Repeat for the remaining three rods.
3. Slide the canopy, with the support plate, over the four rods. Install the supplied cotter pins through the cross hole located near the end of the rods. The bowl and rod assembly can now be secured to the crossbar with two flat head screws (supplied).
4. Feed the lead wires from the lamp body through the stem and thread the stem into the coupler. Tighten the set screw to secure the stem. Feed the wire through the hangstraight and then thread the hangstraight onto the top of the stem.
5. Slide the ring nut, located on the hang straight, down the stem along with the splice cover plate. Feed the lead wires through the crossbar pipe nipple and thread the hangstraight onto the pipe nipple.
6. Make wire connection inside the canopy. Position the splice cover over the hangstraight and secure with the ring nut.



DETAIL A

12/05/13
IS45614X