

IMPORTANT SAFETY AND INSTALLATION INSTRUCTIONS

WARNING: Risk of fire and electrical shock. This product is to be installed by a qualified electrician only.

CAUTION: When using electrical equipment, basic safety precautions should always be followed including the following: Read all instructions carefully before installation and save

for future use. Make sure installation and all connections are in accordance with National Electrical Code and any local regulations. To avoid possible electrical shock, be sure that power supply is turned off before installing or servicing this fixture. Servicing should be performed by qualified service personnel.

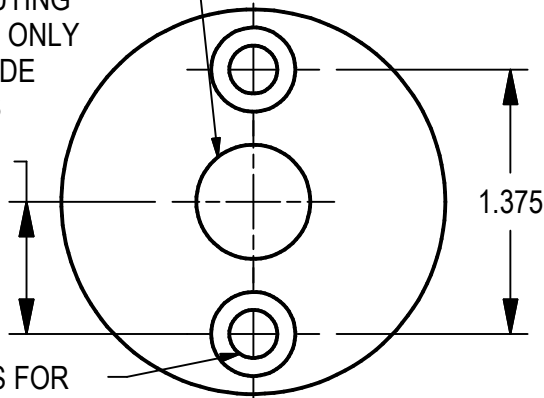
These instructions do not claim to cover all details or variations. When additional information is desired, please contact your SPI representative.

STYK MCS - 2" MINI CANOPY MOUNT

DRILL 3/8" DIAMETER HOLE
FOR WIRE ROUTING

***NOTE: HOLE ONLY
NEEDED ON SIDE
WHERE WIRES
EXIT***

.688



PRE-DRILL HOLES FOR
CONCRETE SCREWS,
TOGGLE BOLTS, OR
WOOD SCREWS (BY
OTHERS). SCREWS NOT
TO EXCEED 3/16"

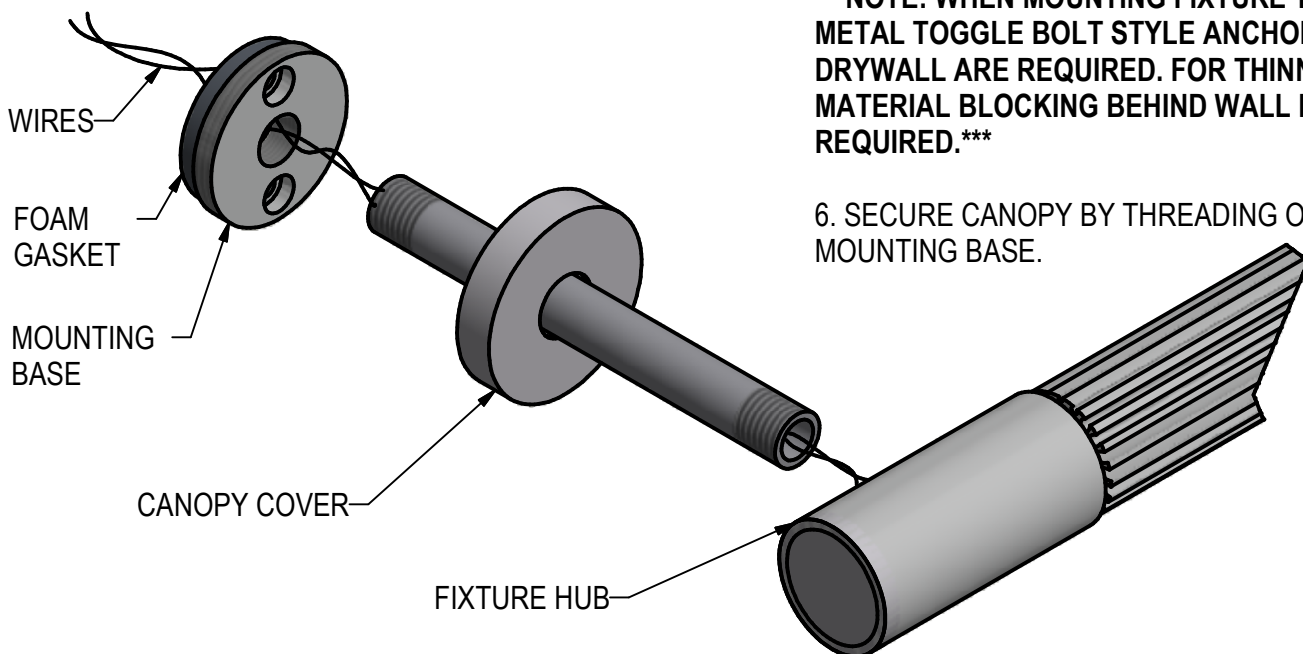
PREPARE WALL

INSTALLATION:

1. FEED WIRES THROUGH STEM, CANOPY AND MOUNTING BASE AS SHOWN.
2. ATTACH STEM TO FIXTURE HUB. HAND TIGHTEN.
3. SLIDE CANOPY ONTO STEM, AND ATTACH MOUNTING HUB TO OTHER END OF STEM AS SHOWN. BE SURE TO ALIGN MOUNTING HOLES VERTICALLY.
4. FEED WIRES INTO CENTER HOLE AND ROUTE TO J-BOX, LOCATED PER CODE AND BY OTHERS.
5. PLACE FOAM GASKET BETWEEN MOUNTING BASE AND WALL. SECURE MOUNTING BASE TO WALL WITH HARDWARE (BY OTHERS).

NOTE: WHEN MOUNTING FIXTURE TO DRYWALL METAL TOGGLE BOLT STYLE ANCHORS AND 5/8" DRYWALL ARE REQUIRED. FOR THINNER MATERIAL BLOCKING BEHIND WALL IS REQUIRED.

6. SECURE CANOPY BY THREADING ONTO THE MOUNTING BASE.



6/8/23
IS112824X