

IMPORTANT SAFETY AND INSTALLATION INSTRUCTIONS

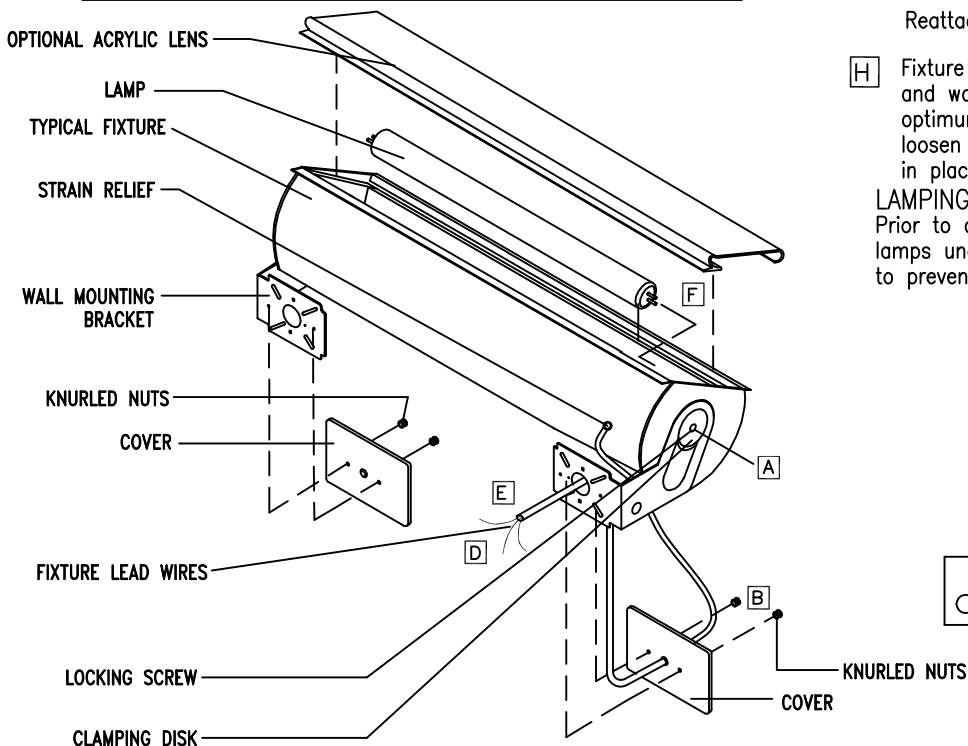
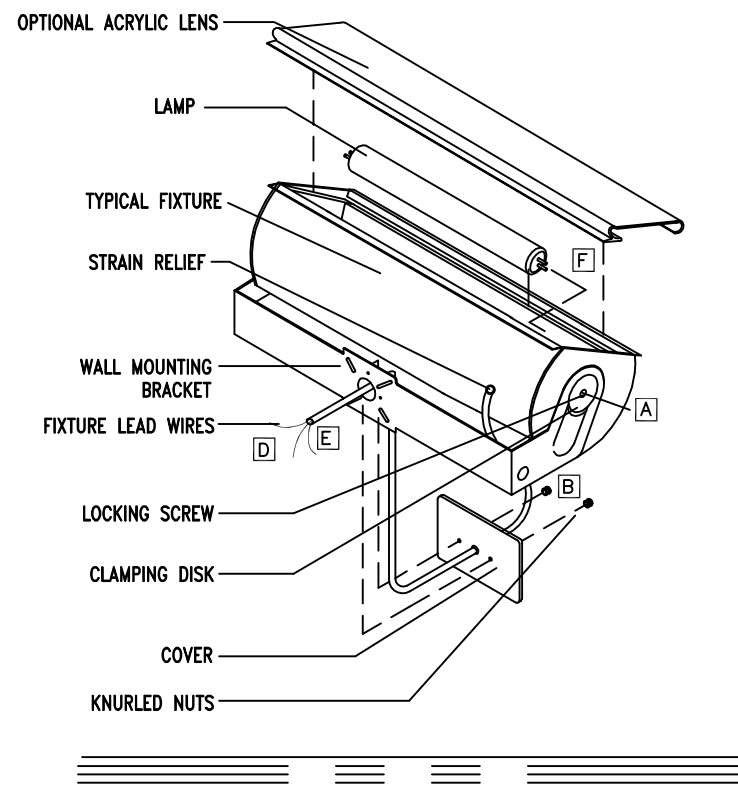
WARNING: Risk of fire and electric shock. This product is to be installed by a qualified electrician only.

CAUTION: When using electrical equipment, basic safety precautions should always be followed including the following: Read all instructions carefully before installation and save

for future use. Make sure installation and all connections are in accordance with National Electrical Code and any local regulations. To avoid possible electrical shock, be sure that power supply is turned off before installing or servicing this fixture. Servicing should be performed by qualified service personnel.

These instructions do not claim to cover all details or variations. When additional information is desired, please contact your SPI representative.

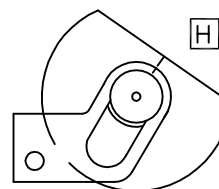
DAMP LOCATION ECHO FLUORESCENT / LED (6.0 AND 9.0)



- A Remove fixture from wall mounting bracket by removing locking screws and clamping disks.
- B Remove splice cover by removing nuts.
- C Use wall mounting bracket as a template to locate auxiliary mounting screw locations. (See back page for more details.)
- D Connect fixture lead wires to supply wires with wire nuts (by others). Feed connections into junction box.
- E Install splice cover with nuts.
- F Remove acrylic lens. Never use a tool to replace the acrylic lens. For 8 foot sections, remove and replace lense starting 2 feet from the end of the fixture (NOT IN CENTER).
- G Install lamp, which must be per lamp replacement label.
- H Reattach acrylic lens. (When Applicable)

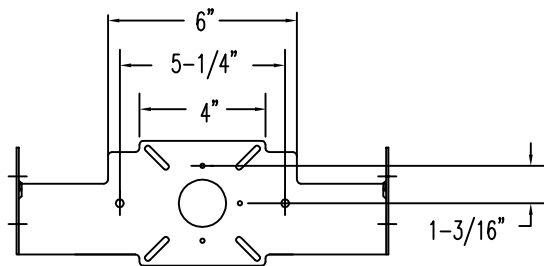
LAMPING NOTE:

Prior to diming fluorescent lamps, operate lamps under normal conditions for 100 hrs. to prevent premature lamp failure.



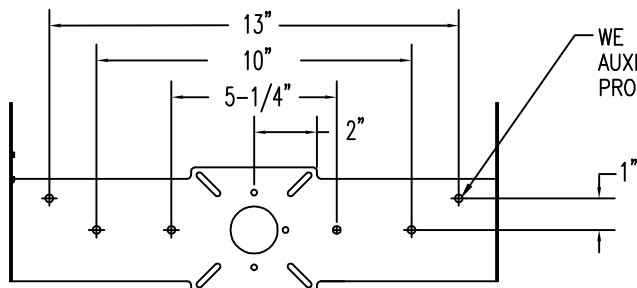
DAMP LOCATION YOKE AUXILIARY MOUNTING DIMENSIONS

12"



AUXILIARY MOUNTING HOLES
FOR A ECHO 6.0.

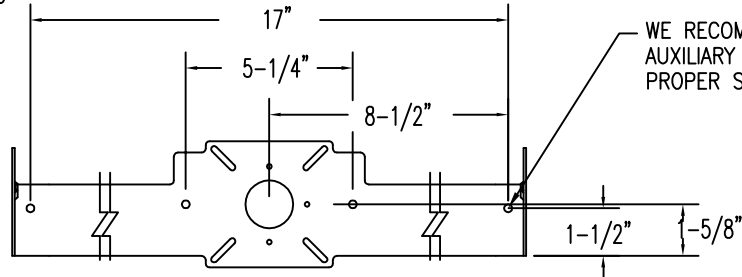
16"



WE RECOMMEND THE USE OF THESE
AUXILIARY MOUNTING HOLES FOR
PROPER SUPPORT OF FIXTURE.

AUXILIARY MOUNTING HOLES
FOR A ECHO 9.0.

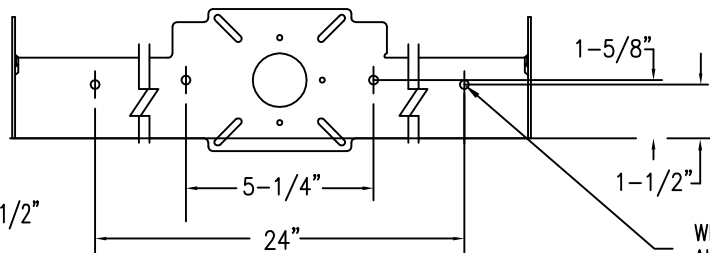
19"



WE RECOMMEND THE USE OF THESE
AUXILIARY MOUNTING HOLES FOR
PROPER SUPPORT OF FIXTURE.

AUXILIARY MOUNTING HOLES
FOR A ECHO 6.0.

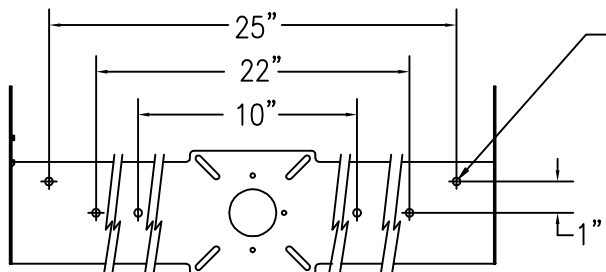
26-1/2"



AUXILIARY MOUNTING HOLES
FOR A ECHO 6.0.

WE RECOMMEND THE USE OF THESE
AUXILIARY MOUNTING HOLES FOR
PROPER SUPPORT OF FIXTURE.

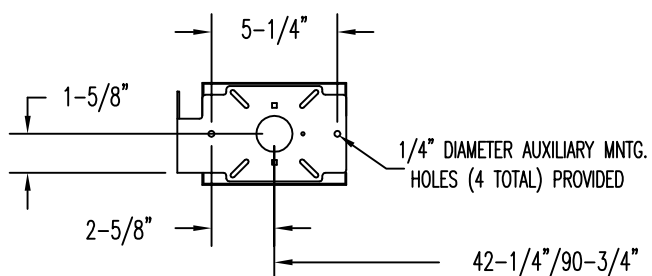
27-1/2"



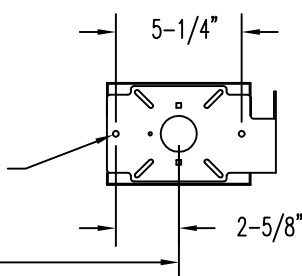
WE RECOMMEND THE USE OF THESE
AUXILIARY MOUNTING HOLES FOR
PROPER SUPPORT OF FIXTURE.

AUXILIARY MOUNTING HOLES
FOR A ECHO 9.0.

WALL MOUNTING BRACKET FOR SIZES 50-1/2" AND 99"



1/4" DIAMETER AUXILIARY MNTG.
HOLES (4 TOTAL) PROVIDED



AUXILIARY MOUNTING HOLES
FOR A ECHO 6.0 OR 9.0.

1/25/17
IS18390X-B