

IMPORTANT SAFETY AND INSTALLATION INSTRUCTIONS

WARNING: Risk of fire and electrical shock. This product is to be installed by a qualified electrician only.

CAUTION: When using electrical equipment, basic safety precautions should always be followed including the following: Read all instructions carefully before installation and save

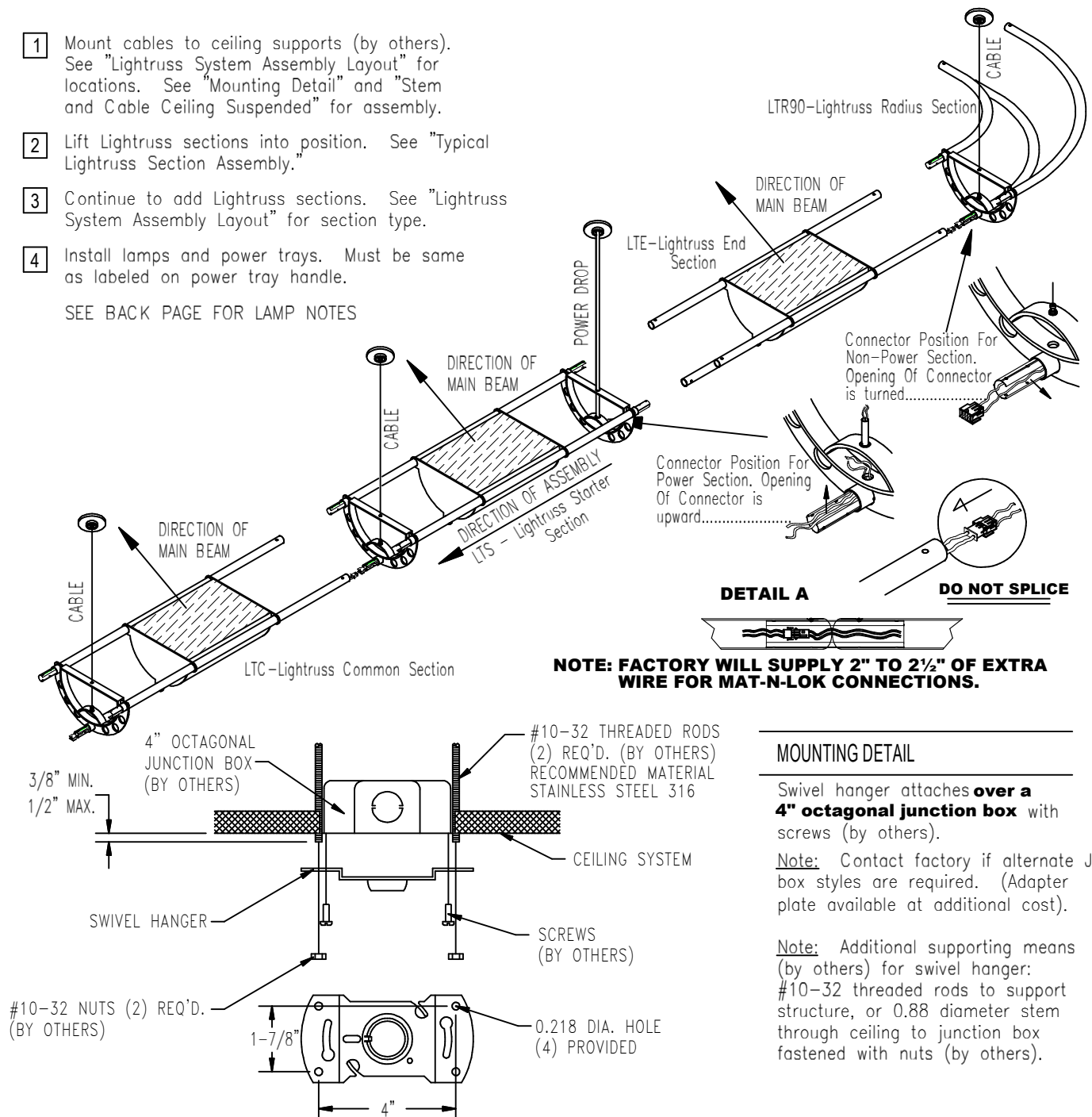
for future use. Make sure installation and all connections are in accordance with National Electrical Code and any local regulations. To avoid possible electrical shock, be sure that power supply is turned off before installing or servicing this fixture. Servicing should be performed by qualified service personnel.

These instructions do not claim to cover all details or variations. When additional information is desired, please contact your SPI representative.

LED LIGHTRUSS

- 1 Mount cables to ceiling supports (by others). See "Lightruss System Assembly Layout" for locations. See "Mounting Detail" and "Stem and Cable Ceiling Suspended" for assembly.
- 2 Lift Lightruss sections into position. See "Typical Lightruss Section Assembly."
- 3 Continue to add Lightruss sections. See "Lightruss System Assembly Layout" for section type.
- 4 Install lamps and power trays. Must be same as labeled on power tray handle.

SEE BACK PAGE FOR LAMP NOTES



12/14/16

IS97082X

IMPORTANT SAFETY AND INSTALLATION INSTRUCTIONS

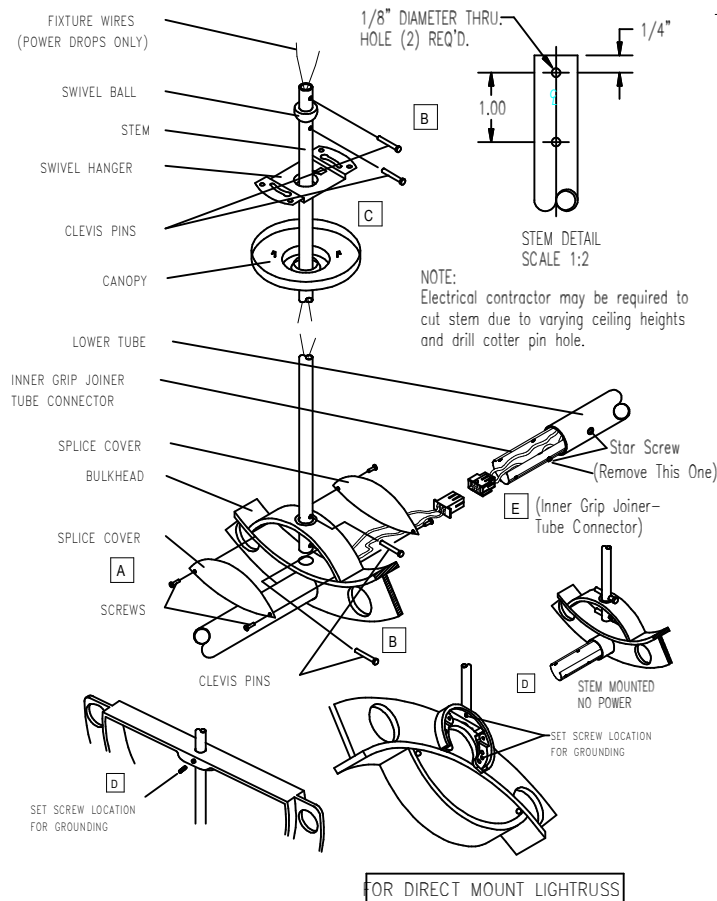
WARNING: Risk of fire and electrical shock. This product is to be installed by a qualified electrician only.

CAUTION: When using electrical equipment, basic safety precautions should always be followed including the following: Read all instructions carefully before installation and save

for future use. Make sure installation and all connections are in accordance with National Electrical Code and any local regulations. To avoid possible electrical shock, be sure that power supply is turned off before installing or servicing this fixture. Servicing should be performed by qualified service personnel.

These instructions do not claim to cover all details or variations. When additional information is desired, please contact your SPI representative.

STEM AND CABLE SUSPENDED SYSTEM

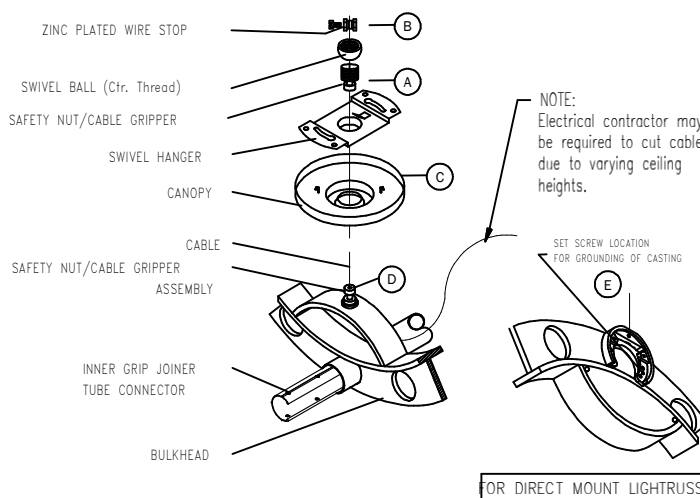


STEM/BULKHEAD ASSEMBLY

- Remove splice covers by removing screws. Feed fixture lead wires through these parts. Feed stem through holes in bulkhead as shown.
- CAUTION:** Insert clevis pins through holes in stem and secure with cotter pins (wire maybe cut if not done carefully). Spread cotter pins. Reattach splice covers with screws. Seat swivel ball groove into swivel hanger tab.
- Secure swivel hanger to threaded rods (by others) with nuts (by others). See "Mounting Detail." Connect fixture lead wires to supply lead wires with wire nuts (by others). Feed connections into junction box. Secure canopy by pushing upward, twist to engage fastening device.
- Tighten set screw onto stem on top side of bulkhead or direct mount casting for for grounding of stem. Tighten set screw through direct mount casting onto bulkhead for grounding of casting.

POWER DROPS

- Tube connector (Inner Grip) will already be secured on one end of section with star screws engaged per factory assembly. When joining sections together, remove one star screw on end where adjacent tube. Slide adjacent tube over remaining portion of connector. Re-engage star screw back into connector to keep tubes joined.



CABLE/BULKHEAD ASSEMBLY

- Loosen safety nut on cable gripper. Feed cable through cable gripper up through swivel ball as shown. Tighten safety nut.
- Feed cable through wire stop and use #8-32 screw to secure crimp on cable.
- Secure swivel hanger to threaded rods (by others) with nuts (by others). See "Mounting Detail- Page 1." Secure canopy by pushing upward, twist to engage fastening device.
- Loosen safety nut on cable gripper. Feed cable through bulkhead/cable gripper assembly as shown. Tighten safety nut. To level system loosen safety nut, push down on safety nut, this releases cable.
- Tighten set screw through direct mount casting onto bulkhead for grounding of casting.

12/14/16
IS97082X

IMPORTANT SAFETY AND INSTALLATION INSTRUCTIONS

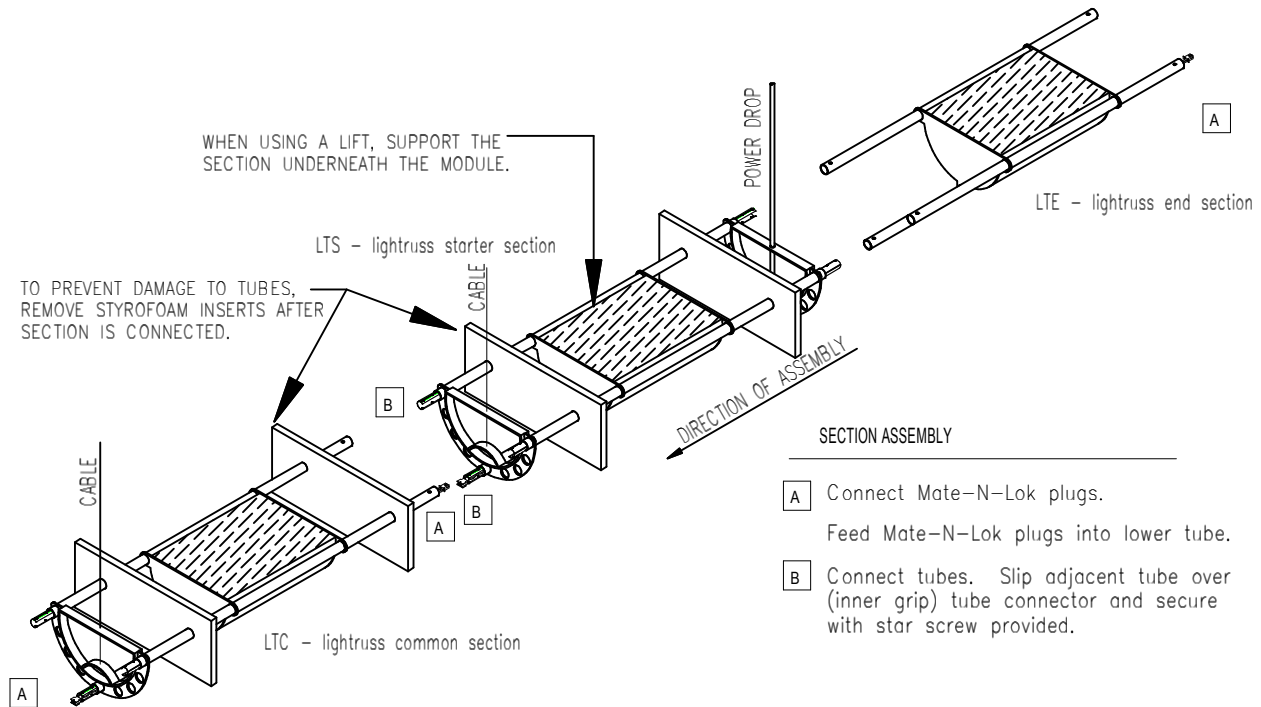
WARNING: Risk of fire and electrical shock. This product is to be installed by a qualified electrician only.

CAUTION: When using electrical equipment, basic safety precautions should always be followed including the following: Read all instructions carefully before installation and save

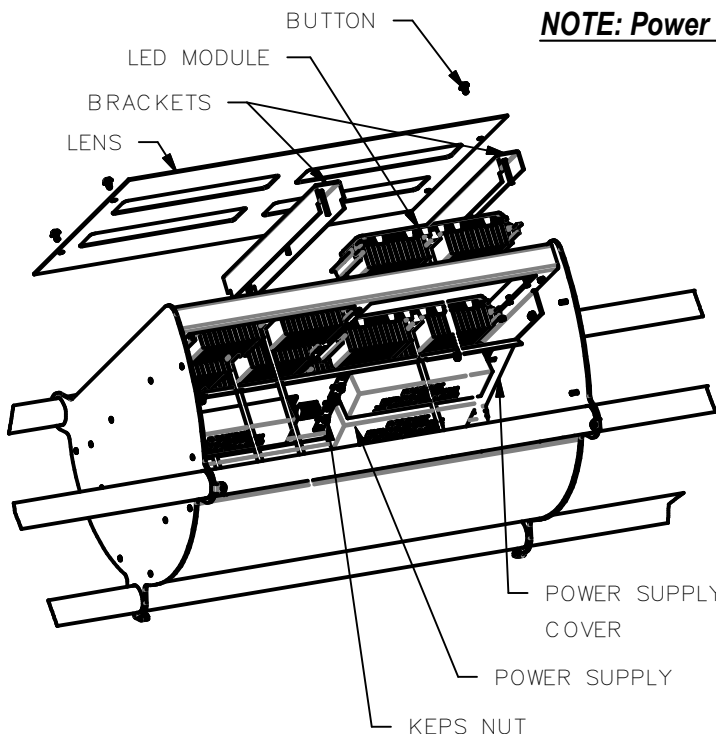
for future use. Make sure installation and all connections are in accordance with National Electrical Code and any local regulations. To avoid possible electrical shock, be sure that power supply is turned off before installing or servicing this fixture. Servicing should be performed by qualified service personnel.

These instructions do not claim to cover all details or variations. When additional information is desired, please contact your SPI representative.

LTS - Starter Section/LTE - End Section/LTC - Common Section



NOTE: Power should be off before attempting either of these operations.



To replace a LED module:

1. Remove lens and brackets.
2. Open power supply cover and unplug LED module.
3. Connect new LED module and replace cover.
4. Place LED module into unit and secure with brackets.
5. Replace lens and secures with new buttons.

To replace a Power Supply:

1. Open power supply cover and disconnect power supply from the LED and power leads.
2. Remove the power supply by loosening the keps nuts.
3. Mount new power supply using the same keps nuts.
4. Make all electrical connections by local codes.
5. Replace and secure power supply cover.

12/14/16
IS97082X