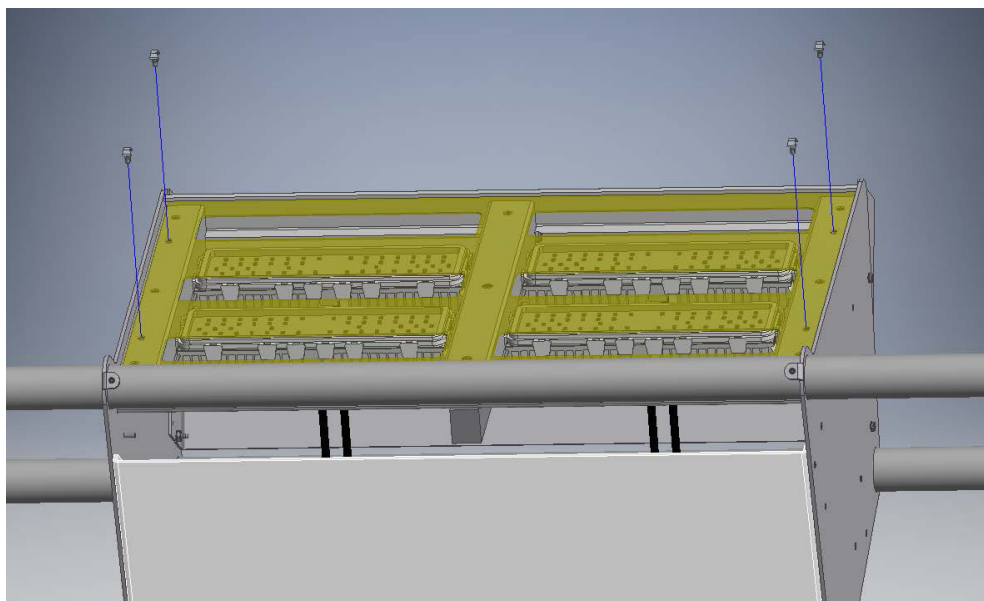


# Lightruss LED

## Backplate Installation

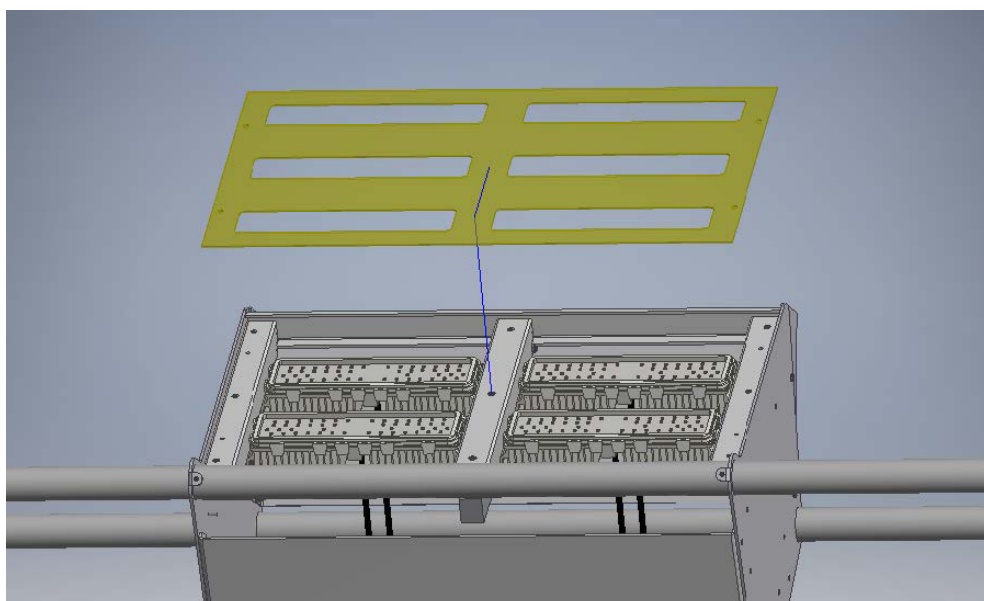
### STEP 1

Snip top of lens clips and push through remnants.



### STEP 2

Remove top lens.

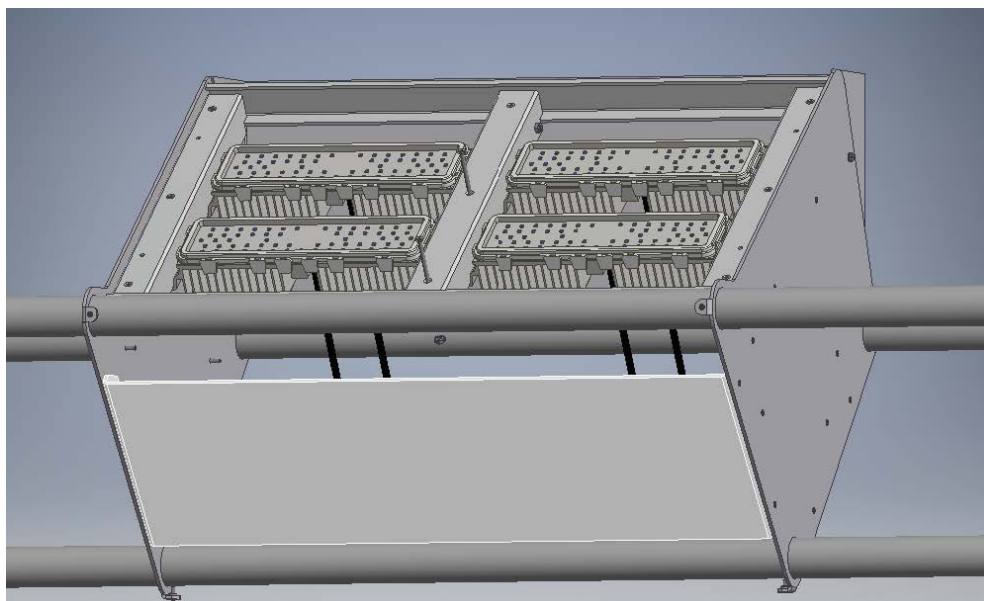


# Lightruss LED

## Backplate Installation

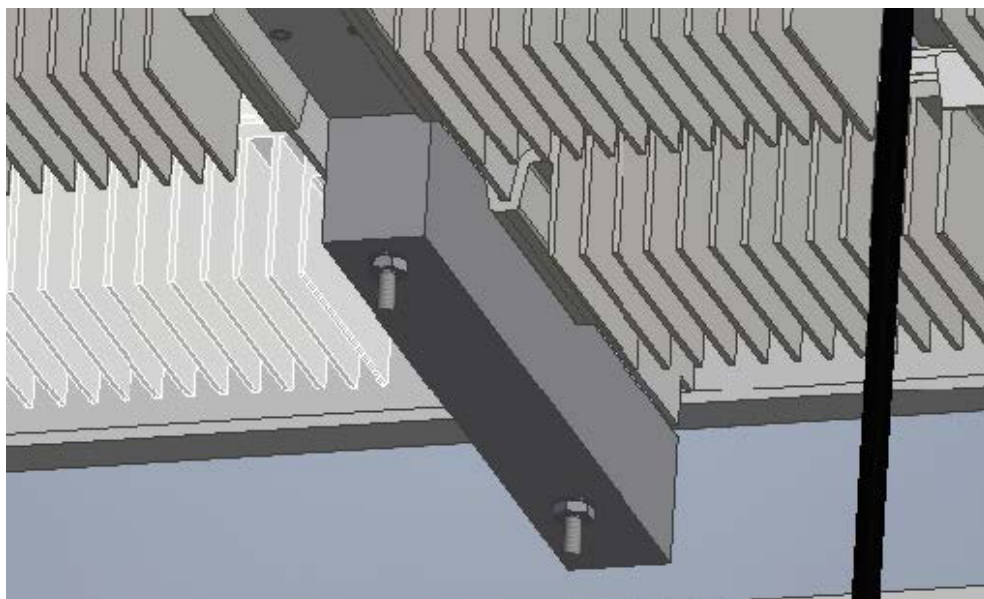
### STEP 3 + 4

Remove first two center screws & replace with longer screws provided



### STEP 5

Orient the counterweight with offset hole closest to front of luminaire.

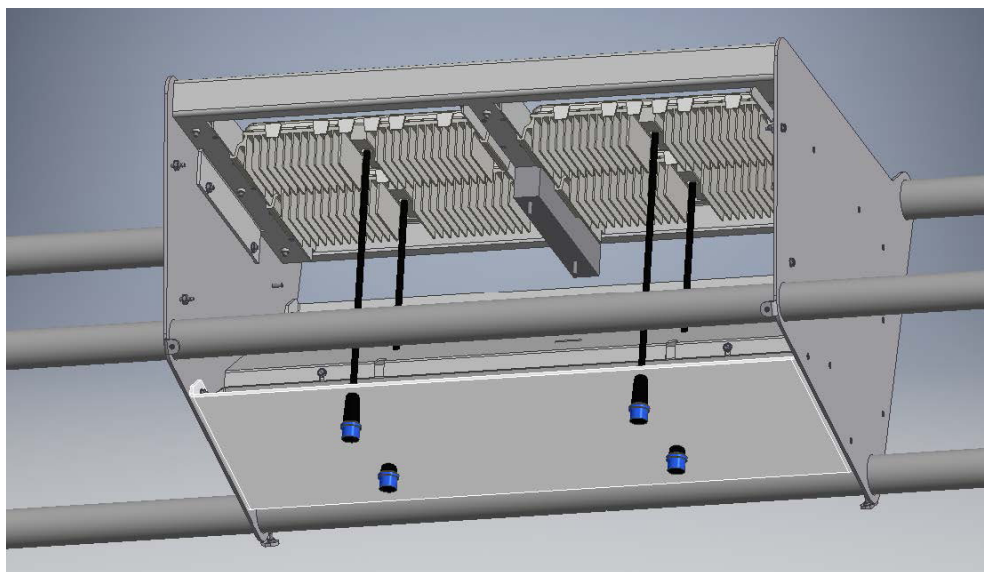


# Lightruss LED

## Backplate Installation

### STEP 6 + 7

Secure counterweight over long screws with provided keps nuts.



### STEP 8 + 9

Reset top lens and secure with provided clips.

If pem studs are not already in place, use template to drill 0.188" diameter clearance holes.

Insert screws, slide cover on, and fasten with included nuts.

