

IMPORTANT SAFETY AND INSTALLATION INSTRUCTIONS

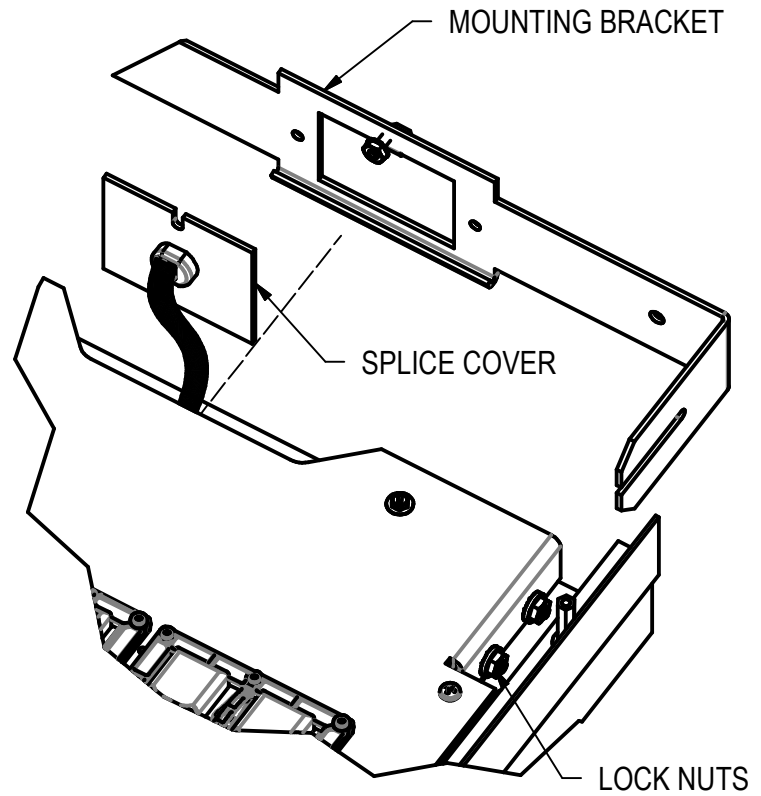
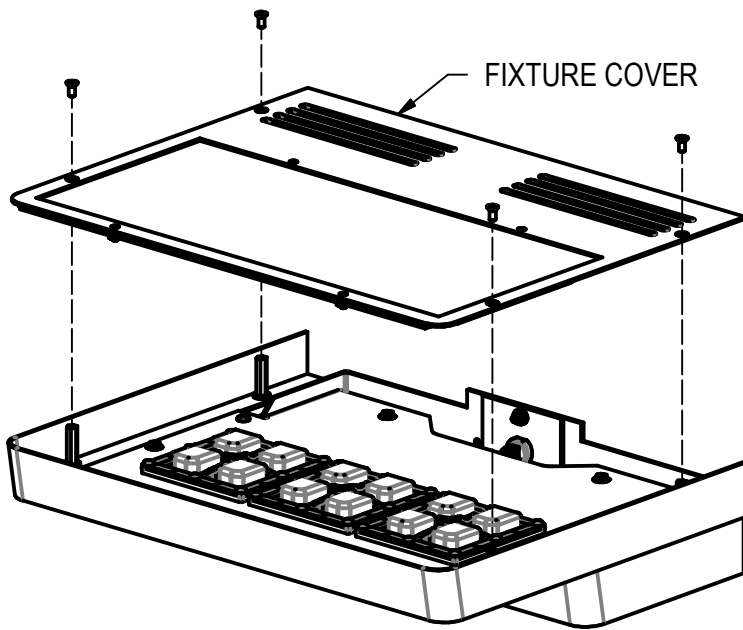
WARNING: Risk of fire and electrical shock. This product is to be installed by a qualified electrician only.

CAUTION: When using electrical equipment, basic safety precautions should always be followed including the following: Read all instructions carefully before installation and save

for future use. Make sure installation and all connections are in accordance with National Electrical Code and any local regulations. To avoid possible electrical shock, be sure that power supply is turned off before installing or servicing this fixture. Servicing should be performed by qualified service personnel.

These instructions do not claim to cover all details or variations. When additional information is desired, please contact your SPI representative.

ECHO BLADE - SSB INSTALLATION



INSTALLATION:

1. REMOVE FIXTURE COVER
2. REMOVE SPLICE COVER FROM MOUNTING BRACKET BY REMOVING KEPS NUT, AND REMOVE MOUNTING BRACKET FROM FIXTURE BY LOOSENING LOCK NUTS
3. USE WALL MOUNTING BRACKET AS TEMPLATE TO LOCATE AUXILIARY MOUNTING SCREW LOCATIONS. (SEE LAST PAGE FOR DIMENSIONS)
4. ATTACH MOUNTING BRACKET TO SWITCH BOX WITH SCREWS (BY OTHERS), MAKE SURE TO ORIENT BRACKET SO THAT THE SPLICE COVER NUT WILL BE ACCESSIBLE THROUGH THE COVER WHEN FIXTURE IS INSTALLED
5. INSTALL AUXILIARY MOUNTING SCREWS (BY OTHERS), USE OF OUTERMOST PAIR OF AUXILIARY MOUNTING SCREWS IS REQUIRED FOR PROPER SUPPORT OF FIXTURE
6. SLIDE FIXTURE ONTO MOUNTING BRACKET, AND TIGHTEN LOCK NUTS
7. CONNECT FIXTURE TO SUPPLY WIRES PER LOCAL CODE, AND REINSTALL SPLICE COVER
8. REINSTALL FIXTURE COVER

6/25/20
IS108160X

IMPORTANT SAFETY AND INSTALLATION INSTRUCTIONS

WARNING: Risk of fire and electrical shock. This product is to be installed by a qualified electrician only.

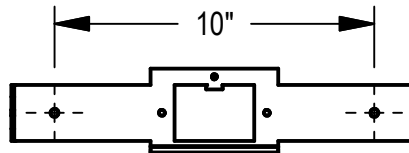
CAUTION: When using electrical equipment, basic safety precautions should always be followed including the following: Read all instructions carefully before installation and save

for future use. Make sure installation and all connections are in accordance with National Electrical Code and any local regulations. To avoid possible electrical shock, be sure that power supply is turned off before installing or servicing this fixture. Servicing should be performed by qualified service personnel.

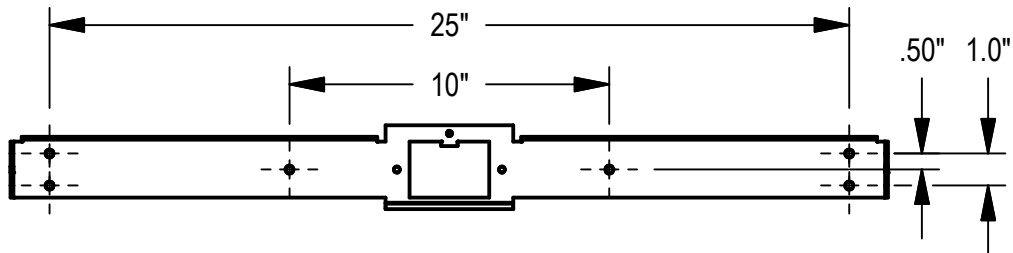
These instructions do not claim to cover all details or variations. When additional information is desired, please contact your SPI representative.

ECHO BLADE - SSB MOUNTING DIMENSIONS

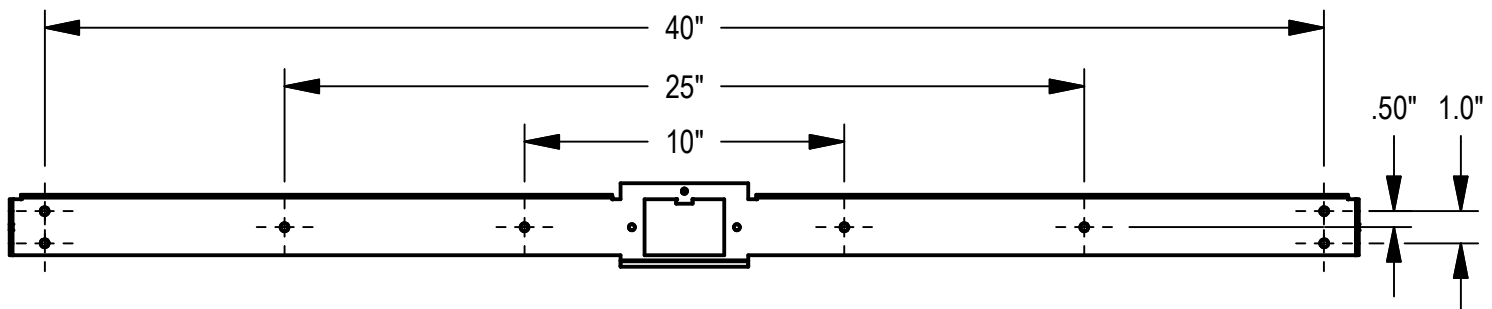
15.5" WIDE FIXTURE MOUNTING HOLE DIMENSIONS



30.25" WIDE FIXTURE MOUNTING HOLE DIMENSIONS



45" WIDE FIXTURE MOUNTING HOLE DIMENSIONS



6/25/20

IS108160X