

IMPORTANT SAFETY AND INSTALLATION INSTRUCTIONS

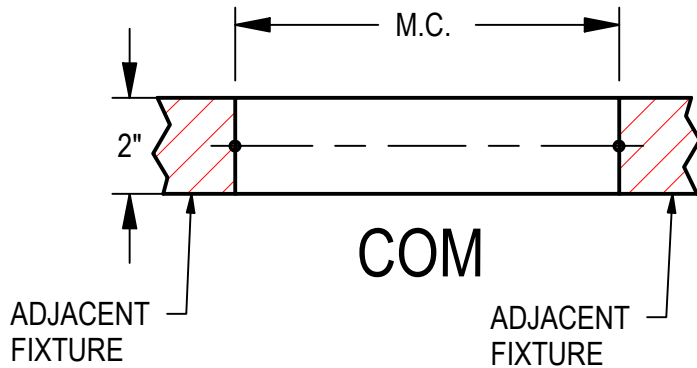
WARNING: Risk of fire and electrical shock. This product is to be installed by a qualified electrician only.

CAUTION: When using electrical equipment, basic safety precautions should always be followed including the following: Read all instructions carefully before installation and save

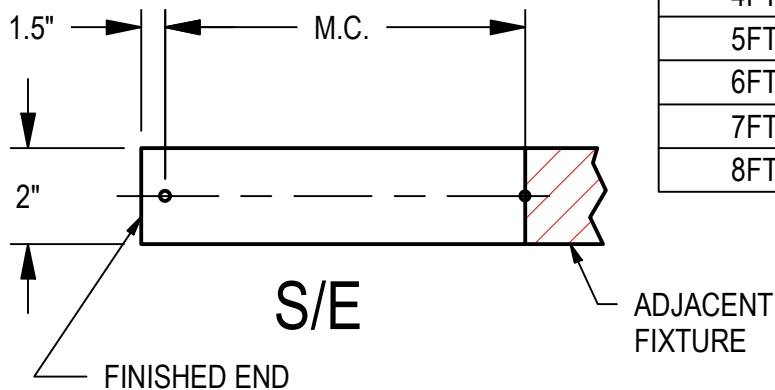
for future use. Make sure installation and all connections are in accordance with National Electrical Code and any local regulations. To avoid possible electrical shock, be sure that power supply is turned off before installing or servicing this fixture. Servicing should be performed by qualified service personnel.

These instructions do not claim to cover all details or variations. When additional information is desired, please contact your SPI representative.

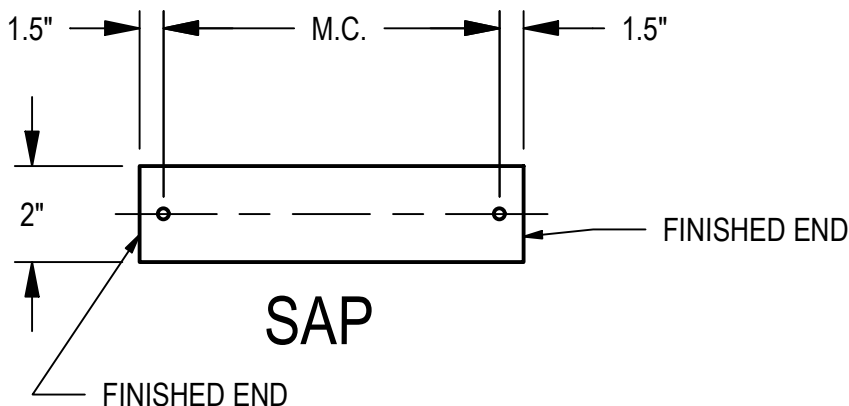
AIP 12234 - NOVATO 2" LINES



KEY
COM = Common Section
S/E = Start/End
SAP = Standalone Pendant



MOUNTING DIMENSIONS			
LENGTH	COM M.C.	S/E M.C.	SAP M.C.
2FT	24"	22.5"	21"
3FT	36"	34.5"	33"
4FT	48"	46.5"	45"
5FT	60"	58.5"	57"
6FT	72"	70.5"	69"
7FT	84"	82.5"	81"
8FT	96"	94.5"	93"



12/17/2020

IS109524X

IMPORTANT SAFETY AND INSTALLATION INSTRUCTIONS

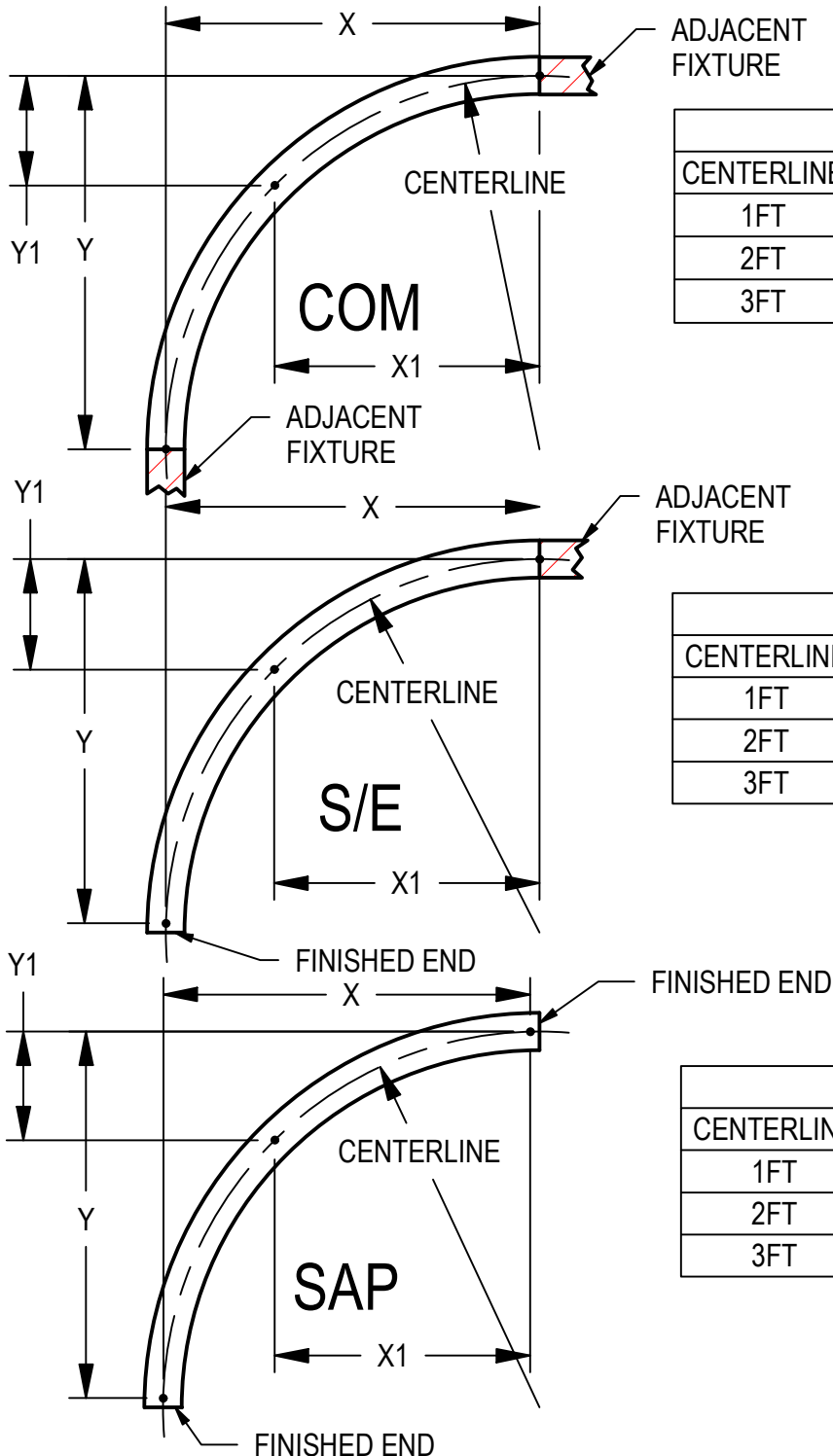
WARNING: Risk of fire and electrical shock. This product is to be installed by a qualified electrician only.

CAUTION: When using electrical equipment, basic safety precautions should always be followed including the following: Read all instructions carefully before installation and save

for future use. Make sure installation and all connections are in accordance with National Electrical Code and any local regulations. To avoid possible electrical shock, be sure that power supply is turned off before installing or servicing this fixture. Servicing should be performed by qualified service personnel.

These instructions do not claim to cover all details or variations. When additional information is desired, please contact your SPI representative.

AIP 12235 NOVATO 2" ARCS 1FT, 2FT, 3FT



MOUNTING DIMENSIONS COM

CENTERLINE	X	Y	X1	Y1
1FT	12"	12"	8.5"	3.5"
2FT	24"	24"	17"	7"
3FT	36"	36"	25.5"	10.5"

MOUNTING DIMENSIONS S/E

CENTERLINE	X	Y	X1	Y1
1FT	12"	10.5"	8.5"	3.5"
2FT	24"	22.5"	17"	7"
3FT	36"	34.5"	25.5"	10.5"

MOUNTING DIMENSIONS SAP

CENTERLINE	X	Y	X1	Y1
1FT	10.5"	10.5"	7"	3.5"
2FT	22.5"	22.5"	15.5"	7"
3FT	34.5"	34.5"	24"	10.5"

12/17/2020

IS109524X

IMPORTANT SAFETY AND INSTALLATION INSTRUCTIONS

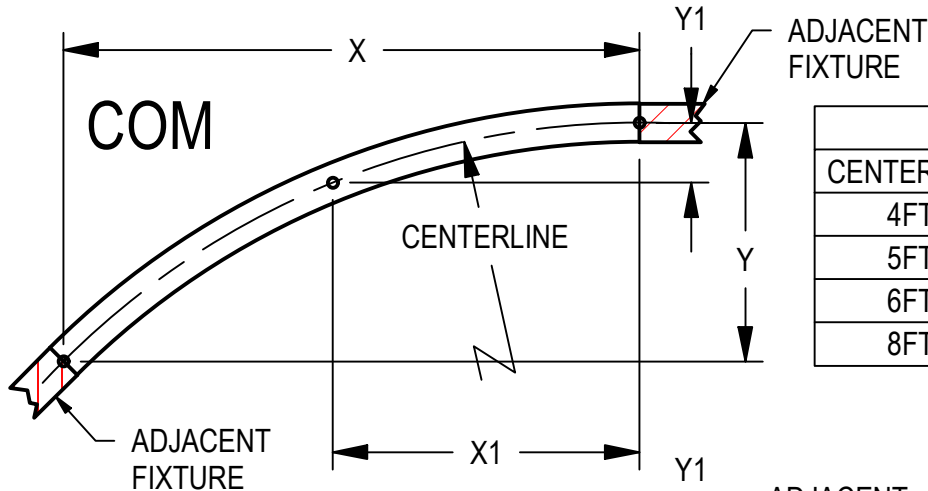
WARNING: Risk of fire and electrical shock. This product is to be installed by a qualified electrician only.

CAUTION: When using electrical equipment, basic safety precautions should always be followed including the following: Read all instructions carefully before installation and save

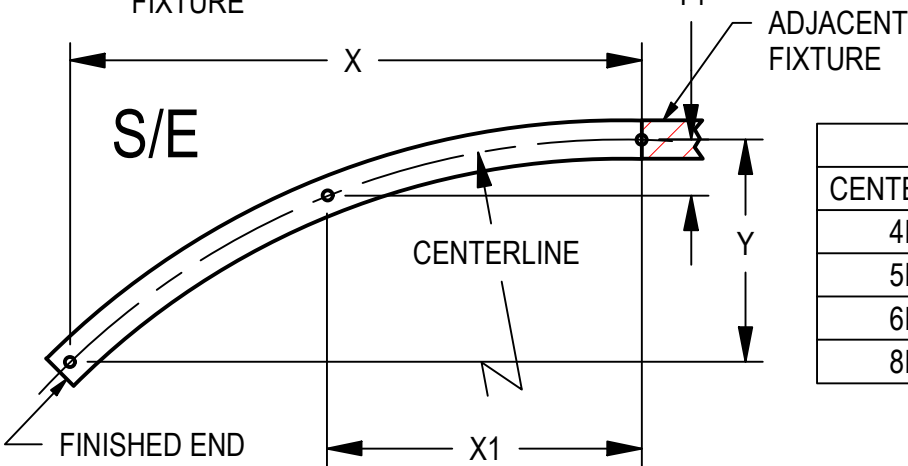
for future use. Make sure installation and all connections are in accordance with National Electrical Code and any local regulations. To avoid possible electrical shock, be sure that power supply is turned off before installing or servicing this fixture. Servicing should be performed by qualified service personnel.

These instructions do not claim to cover all details or variations. When additional information is desired, please contact your SPI representative.

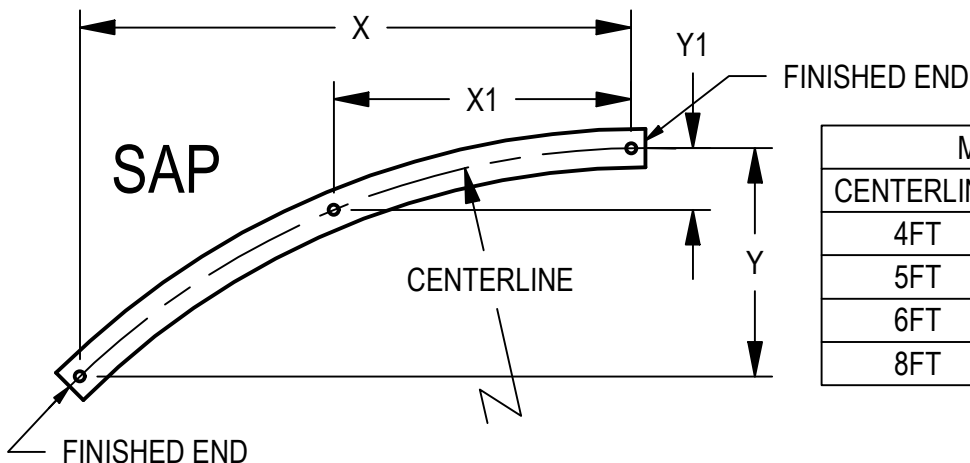
AIP 12235 NOVATO 2" ARCS 4FT, 5FT, 6FT, 8FT



MOUNTING DIMENSIONS COM				
CENTERLINE	X	Y	X1	Y1
4FT	33.94"	14.06"	18.37"	3.65
5FT	42.43"	17.57"	22.96"	4.57"
6FT	50.91"	21.09"	27.55"	5.48"
8FT	67.89"	28.12"	36.74"	7.31"



MOUNTING DIMENSIONS S/E				
CENTERLINE	X	Y	X1	Y1
4FT	32.93"	13.07"	18.37"	3.65
5FT	41.16"	16.34"	22.96"	4.57"
6FT	49.39"	19.60"	27.55"	5.48"
8FT	65.85"	26.14"	36.74"	7.31"



MOUNTING DIMENSIONS SAP				
CENTERLINE	X	Y	X1	Y1
4FT	31.49"	13.05"	16.94"	3.63"
5FT	39.98"	16.56"	21.54"	4.55"
6FT	48.47"	20.08"	26.13"	5.47"
8FT	65.44"	27.11"	35.31"	7.30"

1/18/2021

IS109524X

IMPORTANT SAFETY AND INSTALLATION INSTRUCTIONS

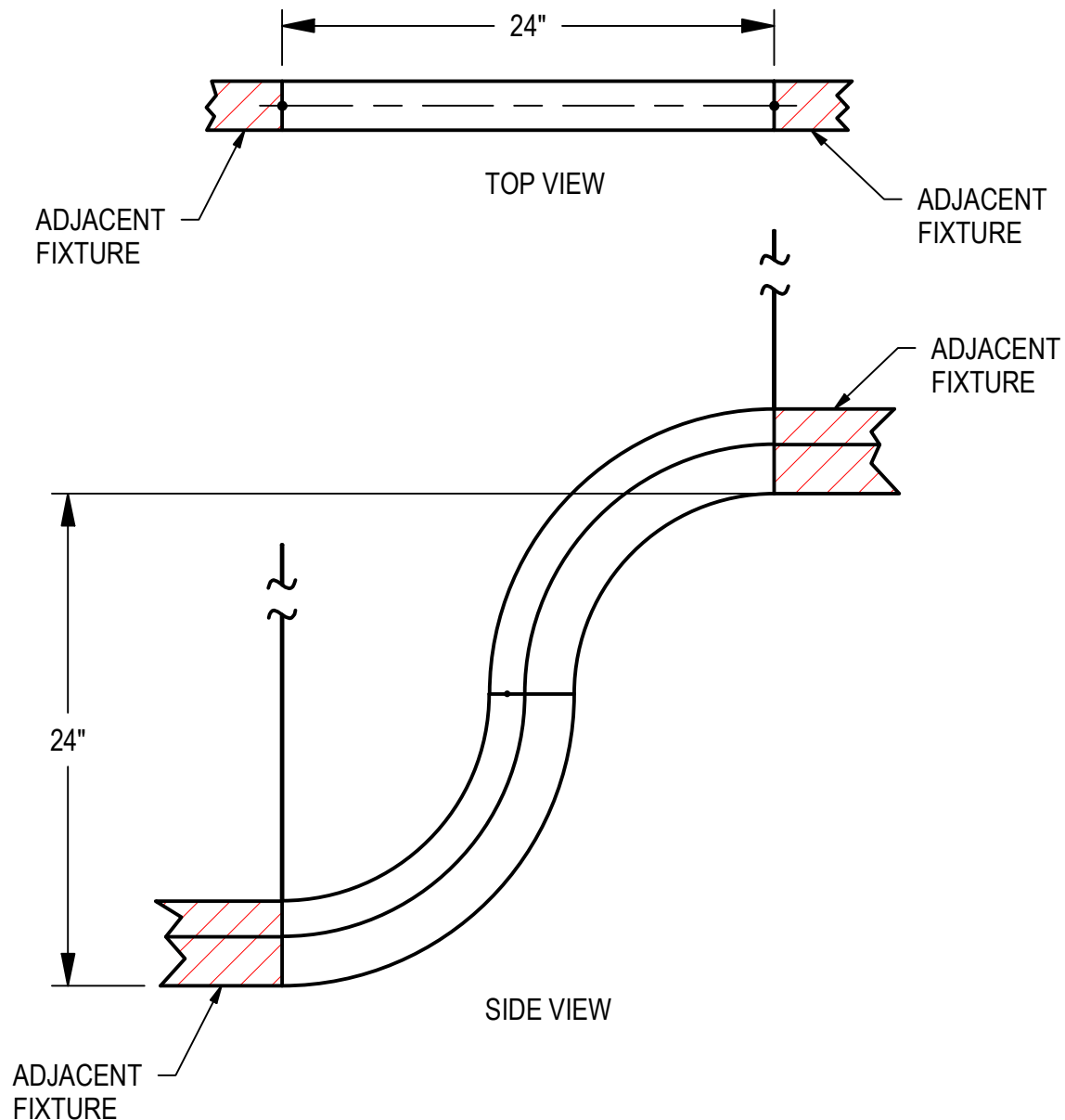
WARNING: Risk of fire and electrical shock. This product is to be installed by a qualified electrician only.

CAUTION: When using electrical equipment, basic safety precautions should always be followed including the following: Read all instructions carefully before installation and save

for future use. Make sure installation and all connections are in accordance with National Electrical Code and any local regulations. To avoid possible electrical shock, be sure that power supply is turned off before installing or servicing this fixture. Servicing should be performed by qualified service personnel.

These instructions do not claim to cover all details or variations. When additional information is desired, please contact your SPI representative.

AIP 12236 NOVATO 2" ELEVATION CHANGES



12/17/2020

IS109524X

IMPORTANT SAFETY AND INSTALLATION INSTRUCTIONS

WARNING: Risk of fire and electrical shock. This product is to be installed by a qualified electrician only.

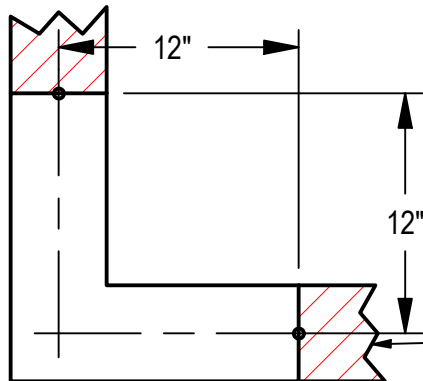
CAUTION: When using electrical equipment, basic safety precautions should always be followed including the following: Read all instructions carefully before installation and save

for future use. Make sure installation and all connections are in accordance with National Electrical Code and any local regulations. To avoid possible electrical shock, be sure that power supply is turned off before installing or servicing this fixture. Servicing should be performed by qualified service personnel.

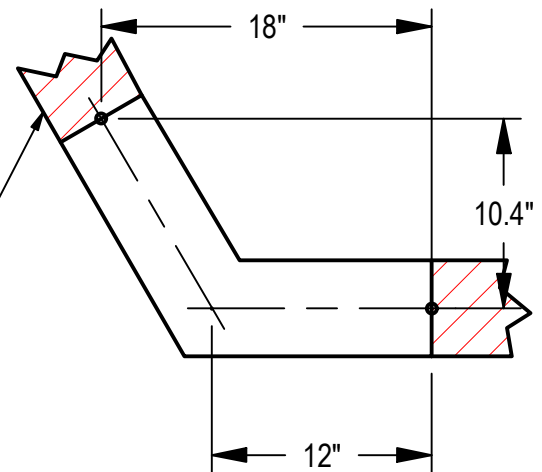
These instructions do not claim to cover all details or variations. When additional information is desired, please contact your SPI representative.

AIP 12237 NOVATO 2" CONNECTORS

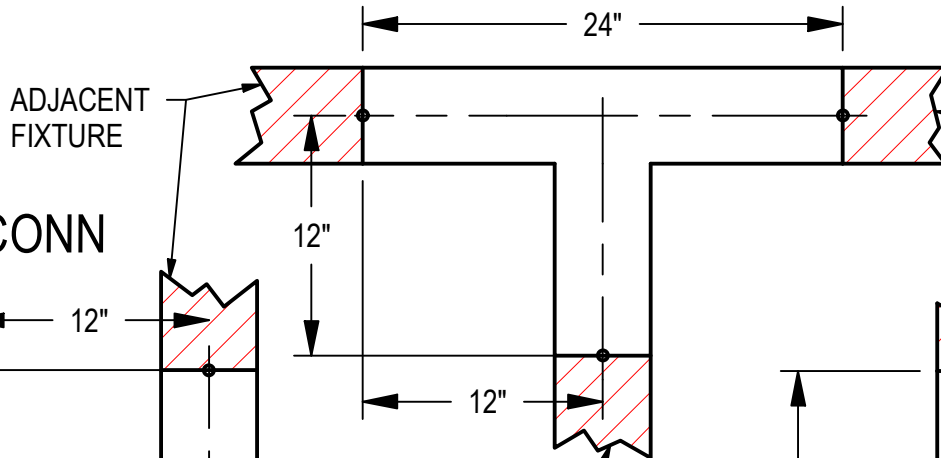
L CONN



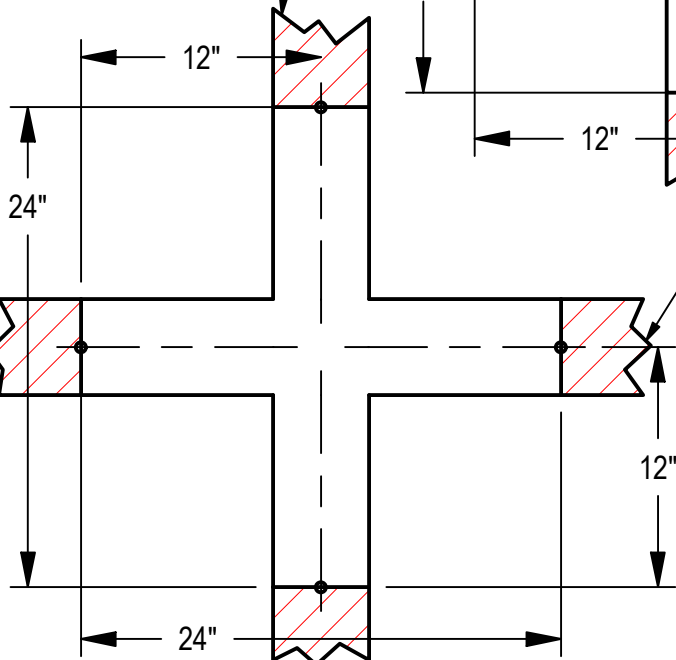
120° V CONN



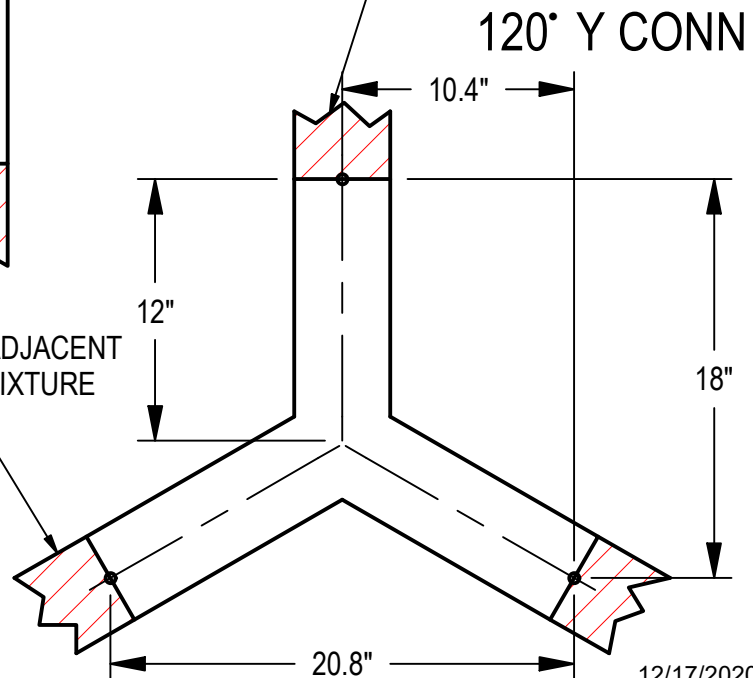
T CONN



+ CONN



120° Y CONN



12/17/2020
IS109524X