

IMPORTANT SAFETY AND INSTALLATION INSTRUCTIONS

WARNING: Risk of fire and electrical shock. This product is to be installed by a qualified electrician only.

CAUTION: When using electrical equipment, basic safety precautions should always be followed including the following: Read all instructions carefully before installation and save

for future use. Make sure installation and all connections are in accordance with National Electrical Code and any local regulations. To avoid possible electrical shock, be sure that power supply is turned off before installing or servicing this fixture. Servicing should be performed by qualified service personnel.

These instructions do not claim to cover all details or variations. When additional information is desired, please contact your SPI representative.

LIGHTRUSS SYSTEM

GENERAL ASSEMBLY

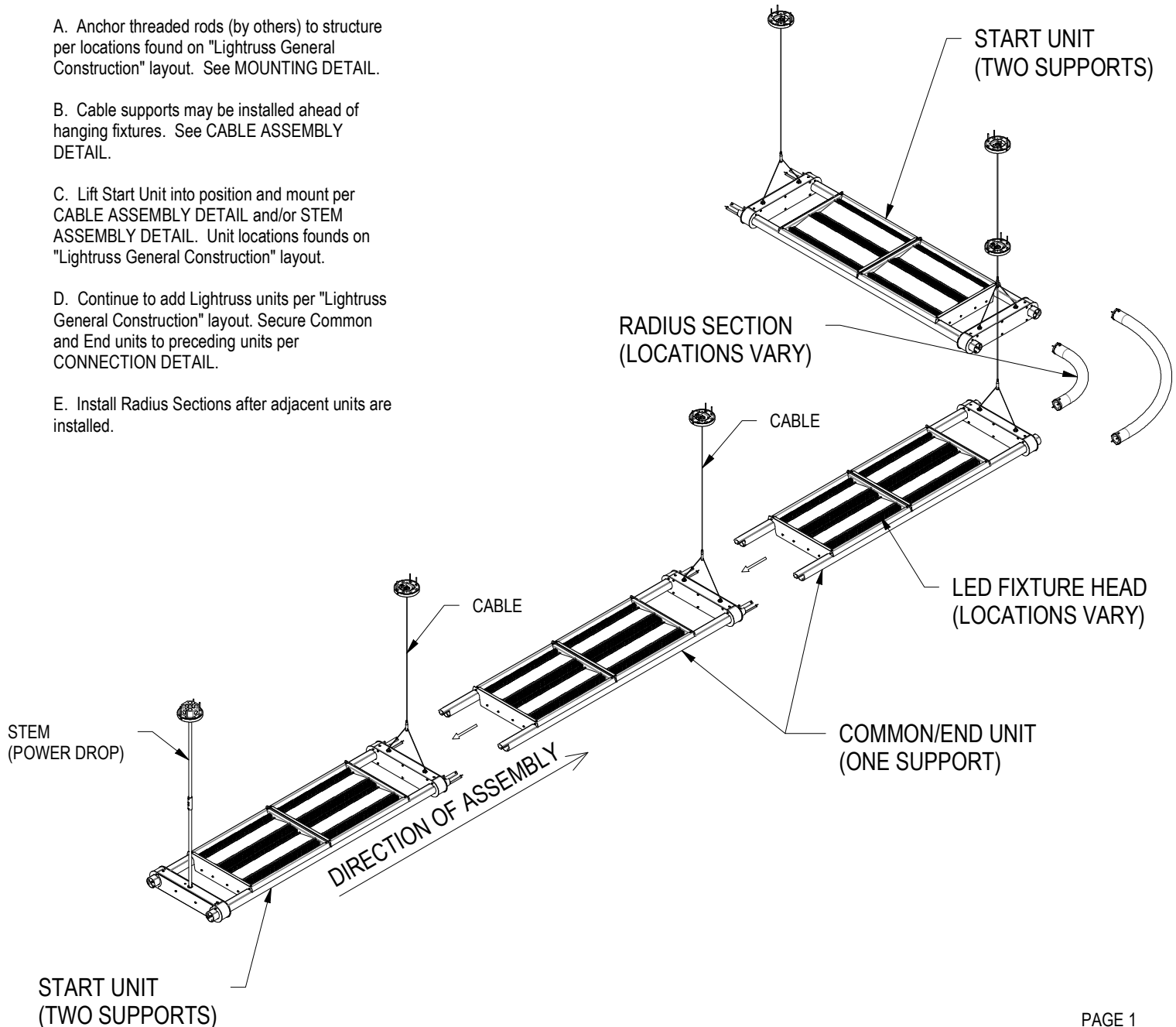
A. Anchor threaded rods (by others) to structure per locations found on "Lightruss General Construction" layout. See MOUNTING DETAIL.

B. Cable supports may be installed ahead of hanging fixtures. See CABLE ASSEMBLY DETAIL.

C. Lift Start Unit into position and mount per CABLE ASSEMBLY DETAIL and/or STEM ASSEMBLY DETAIL. Unit locations found on "Lightruss General Construction" layout.

D. Continue to add Lightruss units per "Lightruss General Construction" layout. Secure Common and End units to preceding units per CONNECTION DETAIL.

E. Install Radius Sections after adjacent units are installed.



IMPORTANT SAFETY AND INSTALLATION INSTRUCTIONS

WARNING: Risk of fire and electrical shock. This product is to be installed by a qualified electrician only.

CAUTION: When using electrical equipment, basic safety precautions should always be followed including the following: Read all instructions carefully before installation and save

for future use. Make sure installation and all connections are in accordance with National Electrical Code and any local regulations. To avoid possible electrical shock, be sure that power supply is turned off before installing or servicing this fixture. Servicing should be performed by qualified service personnel.

These instructions do not claim to cover all details or variations. When additional information is desired, please contact your SPI representative.

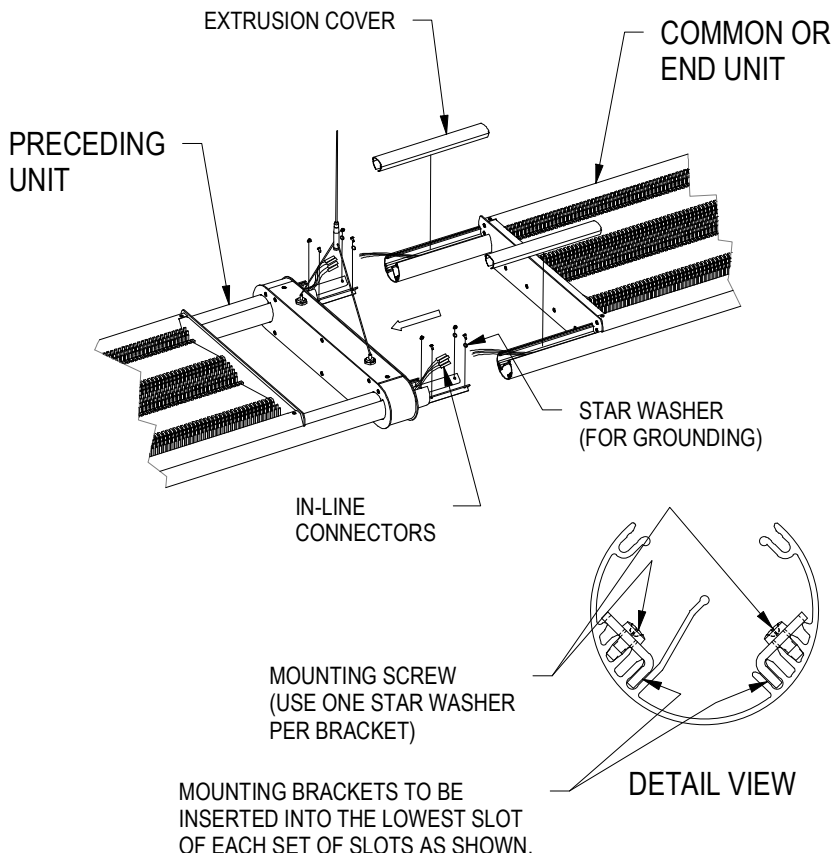
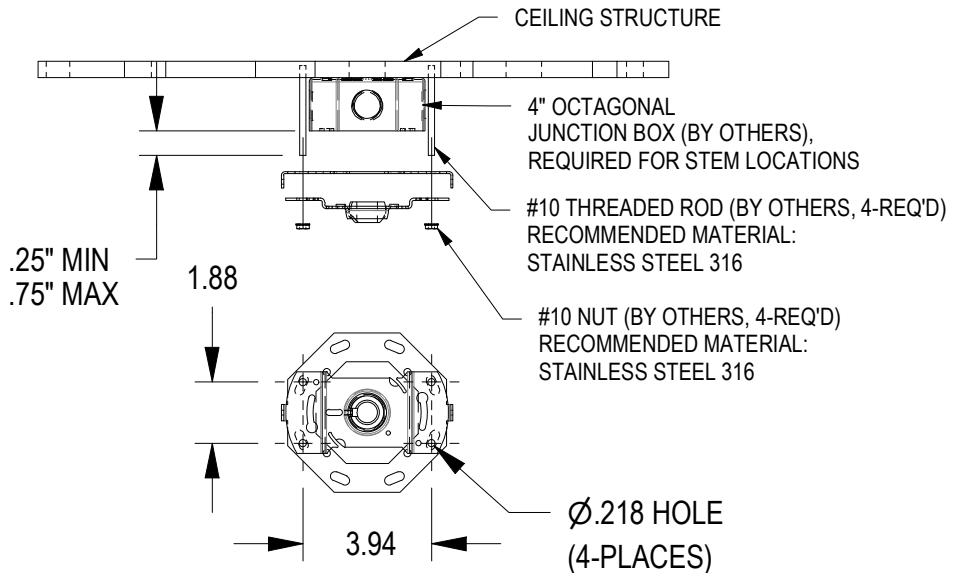
LIGHTRUSS SYSTEM

MOUNTING DETAIL

Swivel hanger is to be anchored to structure, independent of junction box, by use of #10 threaded rods (by others).

For stem locations, the swivel hanger mounts over a 4" octagonal junction box for wire connections.

See "Lightruss General Construction" layout for locations.



CONNECTION DETAIL

A. Remove extrusion covers from common unit. Lift fixture into position and slide over brackets of preceding unit.

SEE DETAIL VIEW FOR ALIGNMENT NOTES.

B. Move the wires and connectors out of the way and install one or two mounting screws per extrusion to temporarily hold the two units together.

C. Mount the other end of the fixture and level fixture. Return to the connection end of the fixture and adjust the mounting brackets as needed. Add the remaining mounting screws and use one star washer per bracket.

D. Connect matching colored wires, in matching chambers, between sections with in-line connectors.

BE CAREFUL TO NOT CONNECT SIMILAR COLORED WIRES BETWEEN TWO DIFFERENT EXTRUSION CHAMBERS.

E. Place excess wires and connectors back into extrusion chambers. Replace extrusion covers.

PAGE 2

10/12/22
IS110045X

IMPORTANT SAFETY AND INSTALLATION INSTRUCTIONS

WARNING: Risk of fire and electrical shock. This product is to be installed by a qualified electrician only.

CAUTION: When using electrical equipment, basic safety precautions should always be followed including the following: Read all instructions carefully before installation and save

for future use. Make sure installation and all connections are in accordance with National Electrical Code and any local regulations. To avoid possible electrical shock, be sure that power supply is turned off before installing or servicing this fixture. Servicing should be performed by qualified service personnel.

These instructions do not claim to cover all details or variations. When additional information is desired, please contact your SPI representative.

LIGHTRUSS SYSTEM

CABLE ASSEMBLY DETAIL

A. Feed cable through canopy, hanger bracket, canopy plate, and swivel ball with gripper with the cable extending a few inches past gripper. Lock gripper by tightening safety nut. Attach cable stop to end of cable.

B. Raise hanger bracket and canopy plate into position and secure to auxiliary mounting studs (by others.) Secure canopy to canopy plate with screws.

NOTE: Steps A and B can be completed ahead of fixture hanging for cable locations.

C. Raise fixture into position and feed cable into lower gripper. Adjust fixture height by use of lower gripper. The fixture may be leveled perpendicular to centerline of run by adjusting gripper to the left or right on the cable loop.

STEM ASSEMBLY DETAIL

Before assembling stem to fixture, confirm stem length. Cut stem to adjust for any variation in mounting heights. Drill new 5/32" diameter holes for clevis pins.

A. Remove splice cover(s) to expose inside of bulkhead. Feed lead wires up through stem and then place stem through sleeve in bulkhead.

B. Carefully insert clevis pins through holes in stem, one above and one below the sleeve. Secure pins with hairpins. Tighten set screw on sleeve to ground bulkhead to stem. Replace splice cover(s).

C. Feed lead wires through canopy, hanger bracket, canopy plate, and swivel ball. Slide these components down stem. Carefully insert clevis pin in upper most hole. Secure with hairpin. Seat swivel ball in hanger bracket and slide to top of stem against clevis pin.

D. Raise fixture into position with hanger bracket and canopy plate inline with j-box. Complete branch circuit wiring. Secure hanger bracket and canopy plate to auxiliary mounting studs (by others.)

E. With swivel ball seated and fixture hanging by stem, tighten set screw in swivel ball to ground stem. Slide canopy up to canopy plate and secure with screws. Carefully insert final clevis pin in hole below canopy.

