

IMPORTANT SAFETY AND INSTALLATION INSTRUCTIONS

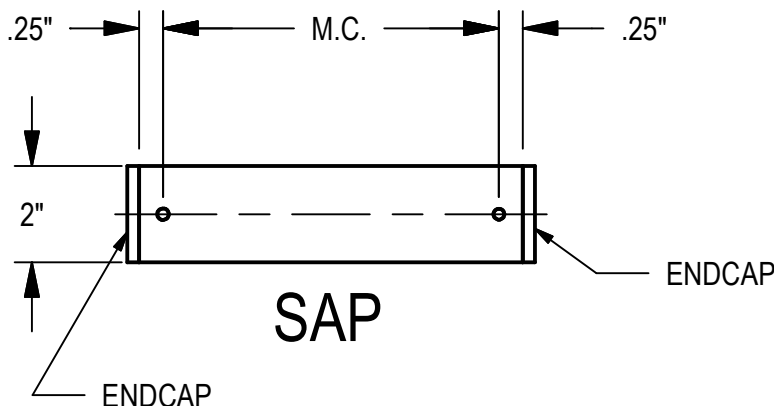
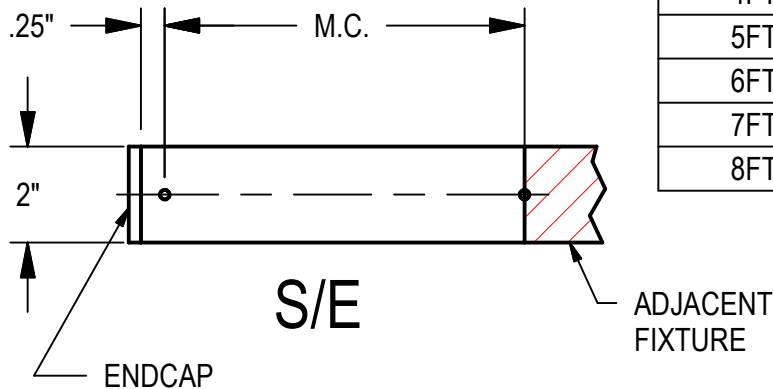
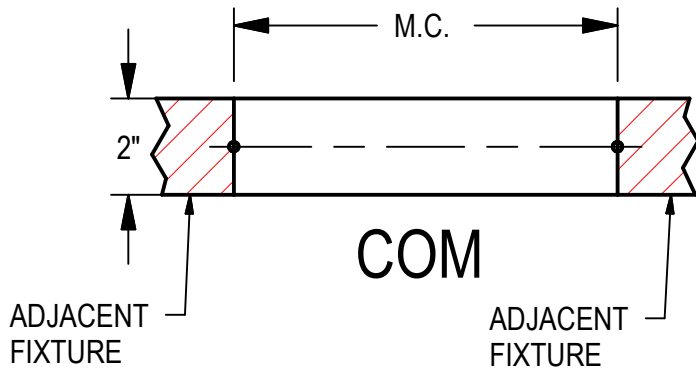
WARNING: Risk of fire and electrical shock. This product is to be installed by a qualified electrician only.

CAUTION: When using electrical equipment, basic safety precautions should always be followed including the following: Read all instructions carefully before installation and save

for future use. Make sure installation and all connections are in accordance with National Electrical Code and any local regulations. To avoid possible electrical shock, be sure that power supply is turned off before installing or servicing this fixture. Servicing should be performed by qualified service personnel.

These instructions do not claim to cover all details or variations. When additional information is desired, please contact your SPI representative.

AIP12255 - ZYNN 2" LINES



KEY
COM = Common Section
S/E = Start/End
SAP = Standalone Pendant

MOUNTING DIMENSIONS			
LENGTH	COM M.C.	S/E M.C.	SAP M.C.
2FT	24"	23.75"	23.5"
3FT	36"	35.75"	35.5"
4FT	48"	47.75"	47.5"
5FT	60"	59.75"	59.5"
6FT	72"	71.75"	71.5"
7FT	84"	83.75"	83.5"
8FT	96"	95.75"	95.5"

5/18/2022

IS110938X

IMPORTANT SAFETY AND INSTALLATION INSTRUCTIONS

WARNING: Risk of fire and electrical shock. This product is to be installed by a qualified electrician only.

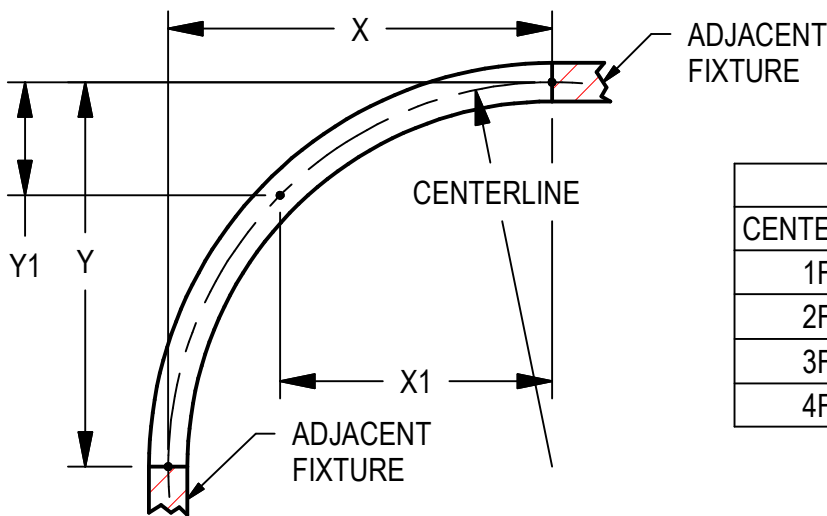
CAUTION: When using electrical equipment, basic safety precautions should always be followed including the following: Read all instructions carefully before installation and save

for future use. Make sure installation and all connections are in accordance with National Electrical Code and any local regulations. To avoid possible electrical shock, be sure that power supply is turned off before installing or servicing this fixture. Servicing should be performed by qualified service personnel.

These instructions do not claim to cover all details or variations. When additional information is desired, please contact your SPI representative.

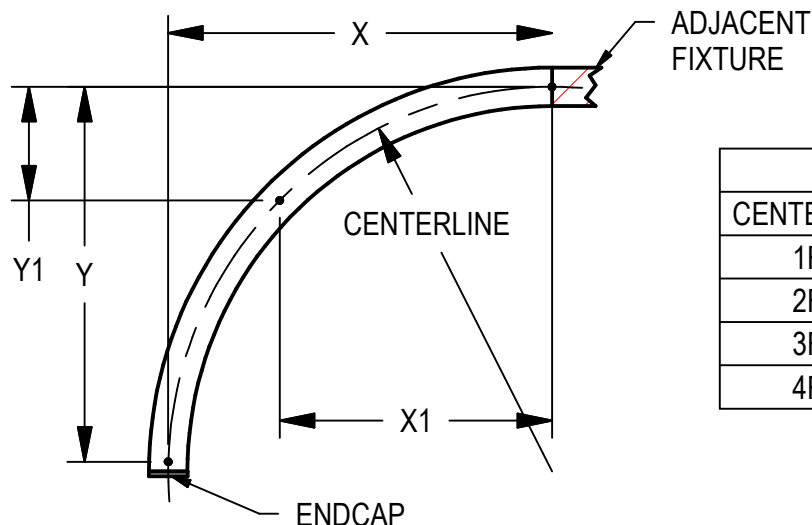
AIP12256 - ZYNN 2" ARCS 1FT, 2FT, 3FT, 4FT

COM



MOUNTING DIMENSIONS COM				
CENTERLINE	X	Y	X1	Y1
1FT	12"	12"	N/A	N/A
2FT	24"	24"	17"	7"
3FT	36"	36"	25.5"	10.5"
4FT	48"	48"	33.9"	14.1"

S/E



MOUNTING DIMENSIONS S/E				
CENTERLINE	X	Y	X1	Y1
1FT	12"	11.75"	N/A	N/A
2FT	24"	23.75"	17"	7"
3FT	36"	35.75"	25.5"	10.5"
4FT	48"	47.75"	33.9"	14.1"

5/18/2022

IS110938X

IMPORTANT SAFETY AND INSTALLATION INSTRUCTIONS

WARNING: Risk of fire and electrical shock. This product is to be installed by a qualified electrician only.

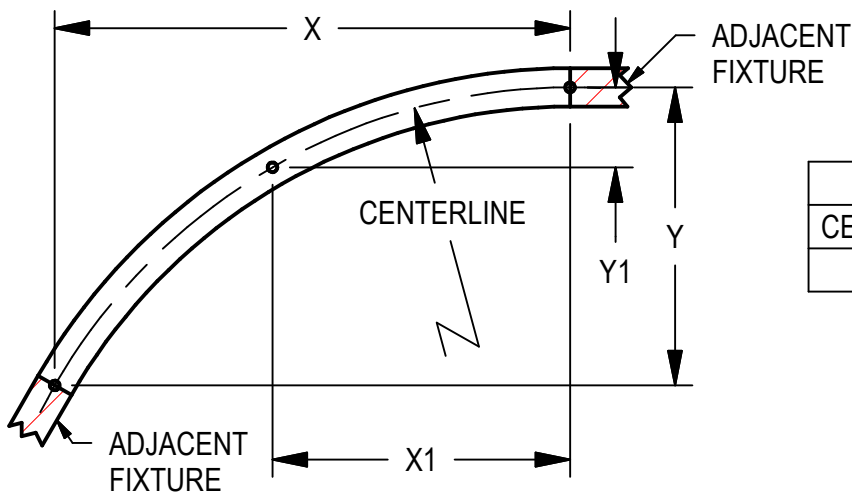
CAUTION: When using electrical equipment, basic safety precautions should always be followed including the following: Read all instructions carefully before installation and save

for future use. Make sure installation and all connections are in accordance with National Electrical Code and any local regulations. To avoid possible electrical shock, be sure that power supply is turned off before installing or servicing this fixture. Servicing should be performed by qualified service personnel.

These instructions do not claim to cover all details or variations. When additional information is desired, please contact your SPI representative.

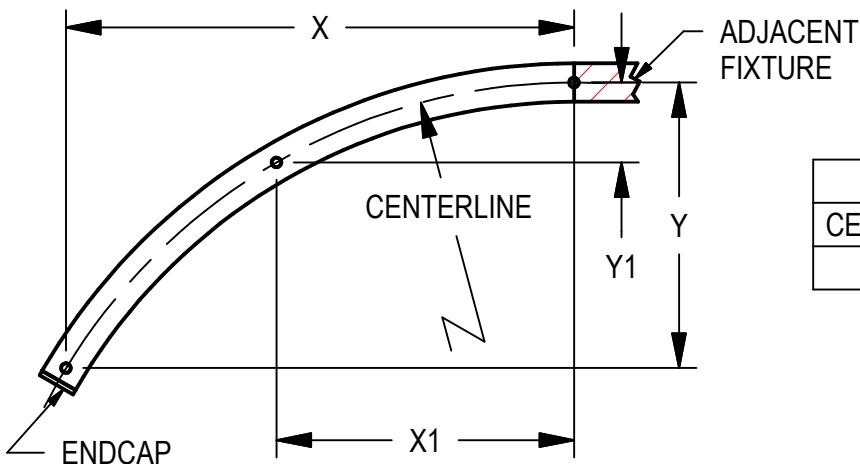
AIP12256 - ZYNN 2" ARCS 5FT

COM



MOUNTING DIMENSIONS COM				
CENTERLINE	X	Y	X1	Y1
5FT	52.0"	30.0"	30.0"	8.0"

S/E



MOUNTING DIMENSIONS S/E				
CENTERLINE	X	Y	X1	Y1
5FT	51.8"	29.8"	30.0"	8.0"

5/18/2022

IS110938X

IMPORTANT SAFETY AND INSTALLATION INSTRUCTIONS

WARNING: Risk of fire and electrical shock. This product is to be installed by a qualified electrician only.

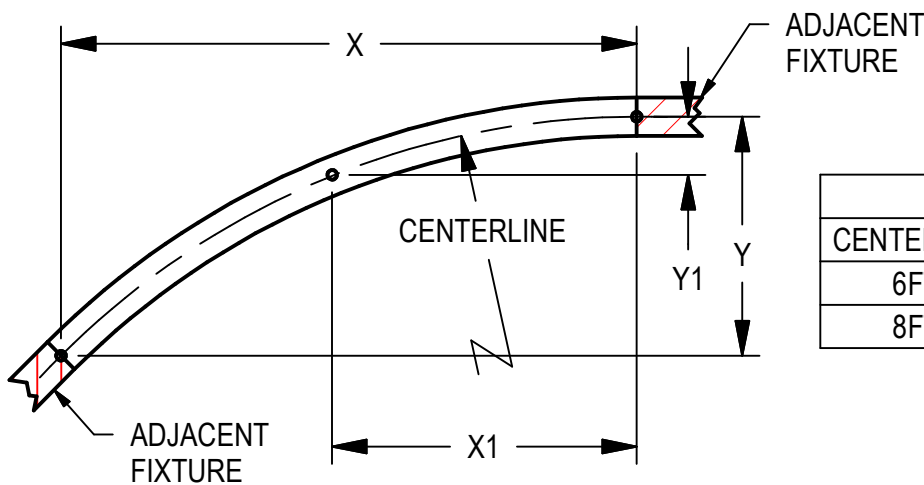
CAUTION: When using electrical equipment, basic safety precautions should always be followed including the following: Read all instructions carefully before installation and save

for future use. Make sure installation and all connections are in accordance with National Electrical Code and any local regulations. To avoid possible electrical shock, be sure that power supply is turned off before installing or servicing this fixture. Servicing should be performed by qualified service personnel.

These instructions do not claim to cover all details or variations. When additional information is desired, please contact your SPI representative.

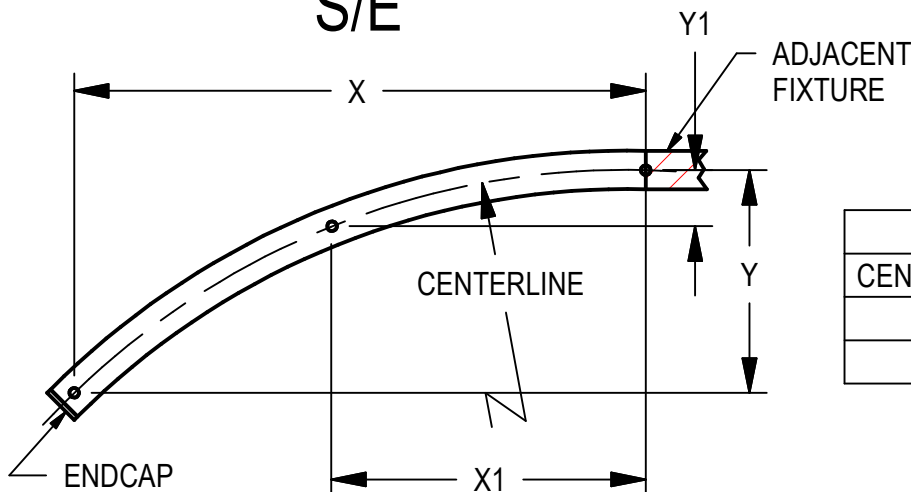
AIP12256 - ZYNN 2" ARCS 6FT, 8FT

COM



MOUNTING DIMENSIONS COM				
CENTERLINE	X	Y	X1	Y1
6FT	50.9"	21.1"	27.6"	5.5"
8FT	67.9"	28.1"	36.7"	7.3"

S/E



MOUNTING DIMENSIONS S/E				
CENTERLINE	X	Y	X1	Y1
6FT	50.7"	20.9"	27.6"	5.5"
8FT	67.7"	27.9"	36.7"	7.3"

5/18/2022

IS110938X

IMPORTANT SAFETY AND INSTALLATION INSTRUCTIONS

WARNING: Risk of fire and electrical shock. This product is to be installed by a qualified electrician only.

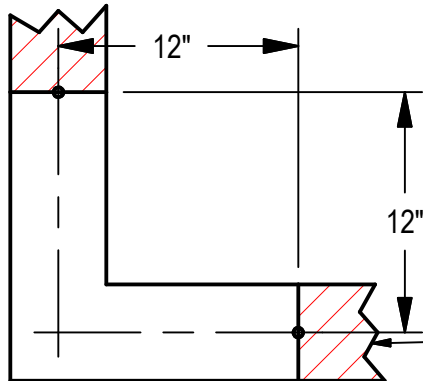
CAUTION: When using electrical equipment, basic safety precautions should always be followed including the following: Read all instructions carefully before installation and save

for future use. Make sure installation and all connections are in accordance with National Electrical Code and any local regulations. To avoid possible electrical shock, be sure that power supply is turned off before installing or servicing this fixture. Servicing should be performed by qualified service personnel.

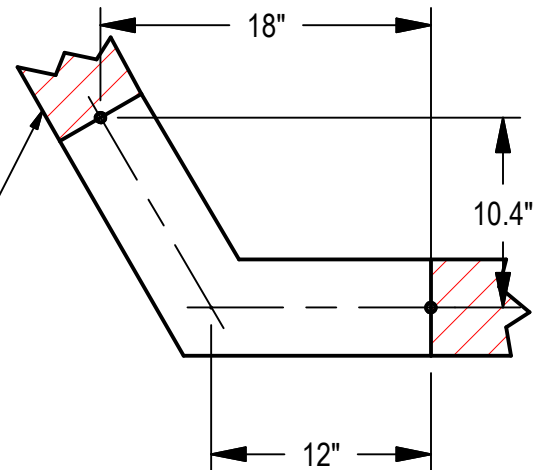
These instructions do not claim to cover all details or variations. When additional information is desired, please contact your SPI representative.

AIP12257 - ZYNN 2" CONNECTORS

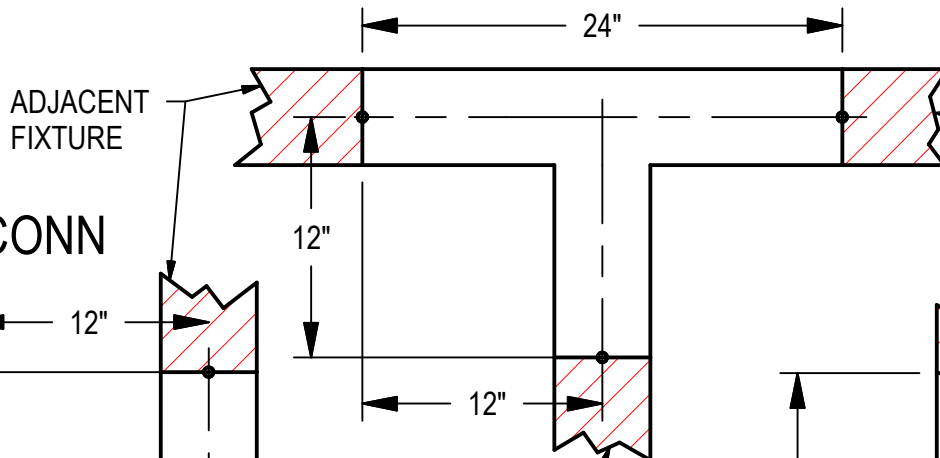
L CONN



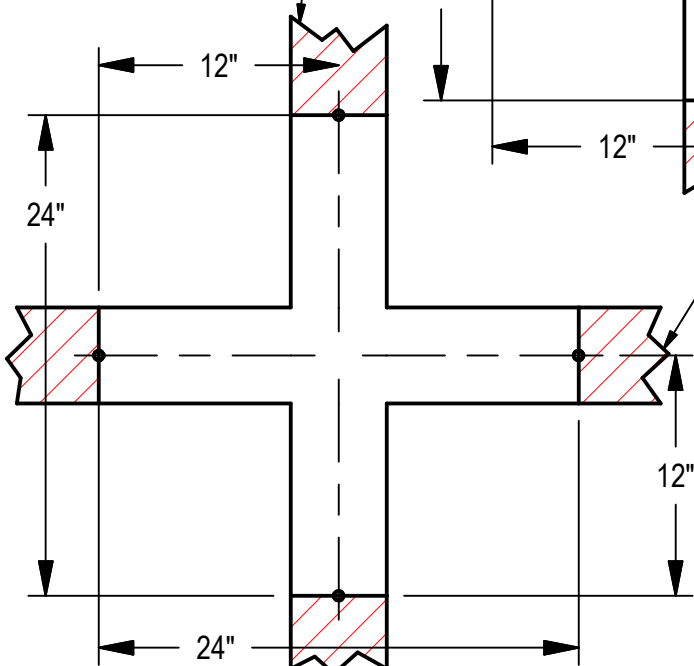
120° V CONN



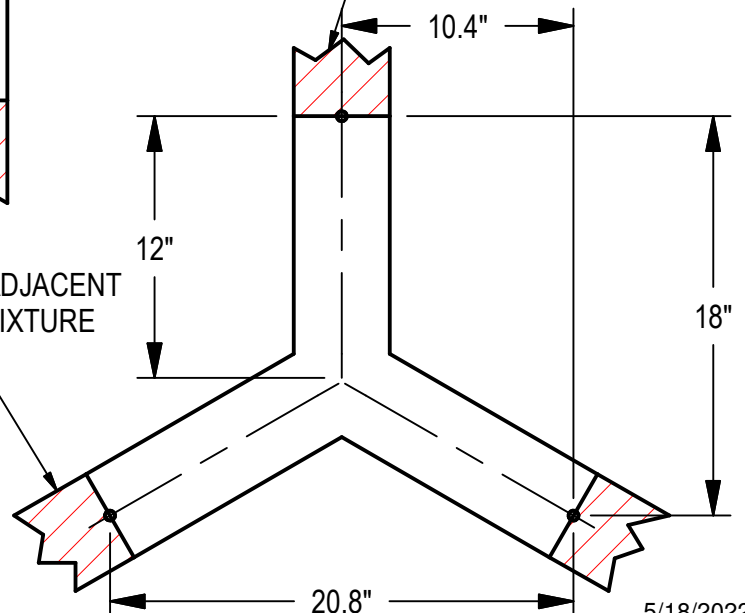
T CONN



+ CONN



120° Y CONN



5/18/2022
IS110938X