

IMPORTANT SAFETY AND INSTALLATION INSTRUCTIONS

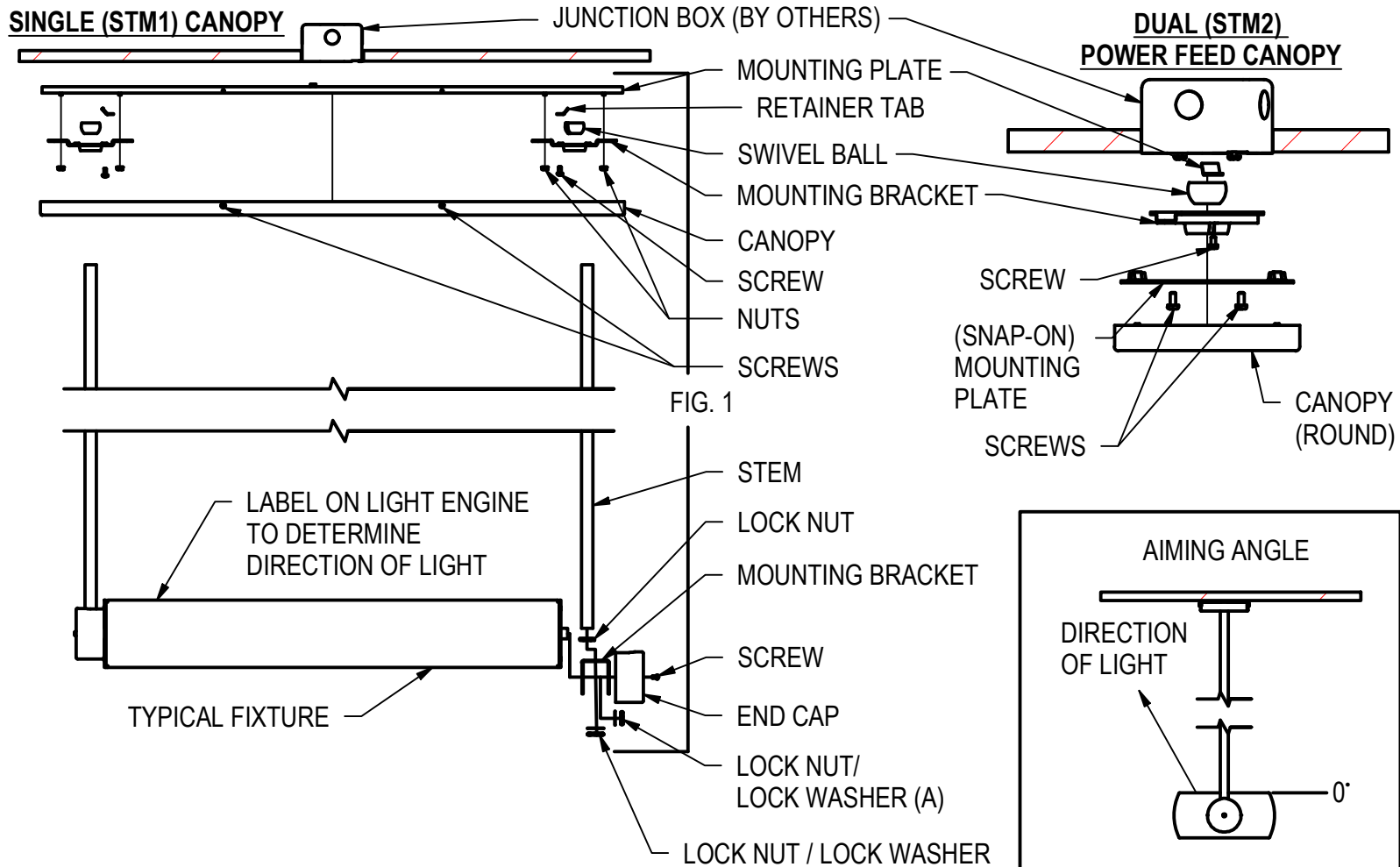
WARNING: Risk of fire and electrical shock. This product is to be installed by a qualified electrician only.

CAUTION: When using electrical equipment, basic safety precautions should always be followed including the following: Read all instructions carefully before installation and save

for future use. Make sure installation and all connections are in accordance with the National Electrical Code and any local regulations. To avoid possible electrical shock, be sure that the power supply is turned off before installing or servicing this fixture. Servicing should be performed by qualified service personnel.

These instructions do not claim to cover all details or variations. When additional information is desired, please contact your SPI representative.

ECHO EXPANSE DOUBLE STEM MOUNT (STM1/STM2)



INSTALLATION:

1. USE MOUNTING PLATE TO LOCATE ANCHOR HOLES BY POSITIONING CENTER OF MOUNTING PLATE OVER JUNCTION BOX (BY OTHERS). SUPPORT BRACKET IS SUPPLIED WITH AUX. MOUNTING HOLES THAT MUST BE USED TO SUPPORT FIXTURE.
2. FEED LEAD WIRES THROUGH THESE PARTS AND ASSEMBLE (SEE FIG. 1). SEAT SWIVEL BALL GROOVE INTO SWIVEL HANGER, ADJUST, AND TIGHTEN SWIVEL BALL RETAINER TAB TO SECURE SWIVEL BALL/FIXTURE ASSEMBLY. (SEE PG2 FOR POWER LOCATION ON STM2 MOUNTED FIXTURES)
3. ATTACH FIXTURE ASSEMBLY TO CEILING WITH MOUNTING PLATE AND ANCHOR SCREWS (BY OTHERS). MAKE ALL ELECTRICAL CONNECTIONS TO FIXTURE PER CODE.
4. TO SECURE CANOPY, SLIDE CANOPY UP STEMS TO CEILING USING SCREWS PROVIDED. SECURE TO MOUNTING PLATE.
5. ATTACH END CAPS WITH SCREWS PROVIDED.
6. UNLESS OTHERWISE SPECIFIED, MOUNT FIXTURE HORIZONTALLY AS SHOWN.
FOR CUSTOM AIMING, LOOSEN LOCKING NUTS (A), AIM FIXTURE, AND RE-TIGHTEN W/ LOCK NUT.

10/6/22

IS111156X

IMPORTANT SAFETY AND INSTALLATION INSTRUCTIONS

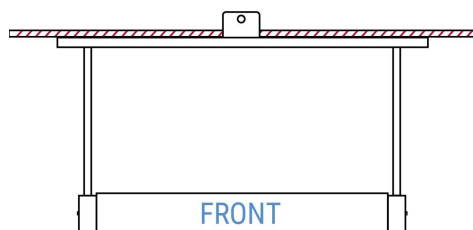
WARNING: Risk of fire and electrical shock. This product is to be installed by a qualified electrician only.

CAUTION: When using electrical equipment, basic safety precautions should always be followed including the following: Read all instructions carefully before installation and save

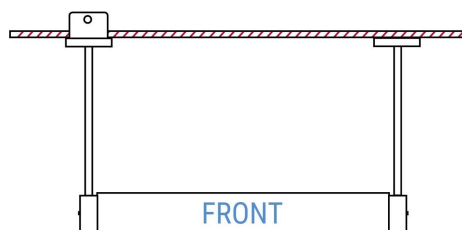
for future use. Make sure installation and all connections are in accordance with the National Electrical Code and any local regulations. To avoid possible electrical shock, be sure that the power supply is turned off before installing or servicing this fixture. Servicing should be performed by qualified service personnel.

These instructions do not claim to cover all details or variations. When additional information is desired, please contact your SPI representative.

ECHO EXPANSE DOUBLE STEM MOUNT (STM1/STM2)



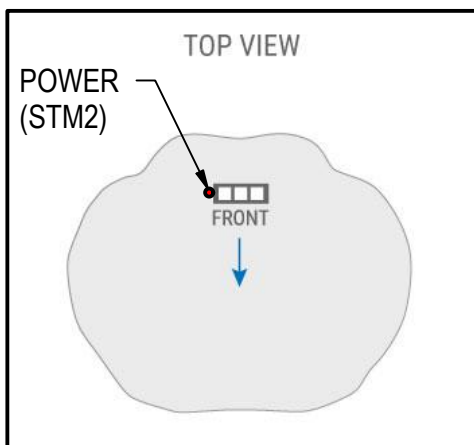
STM1: POWER IS CENTERED



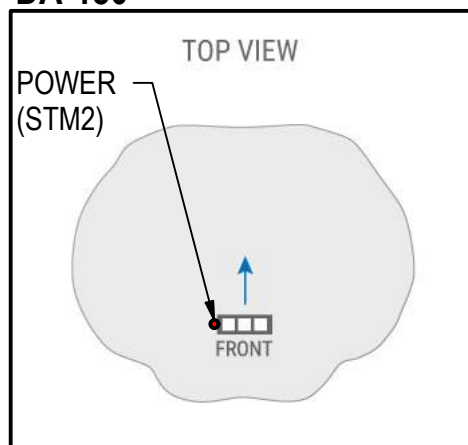
STM2: POWER IS ON THE LEFT STEM WHEN FACING THE FRONT OF THE FIXTURE.

1. FIND LABEL ON LIGHT ENGINE TO DETERMINE DIRECTION OF LIGHT.

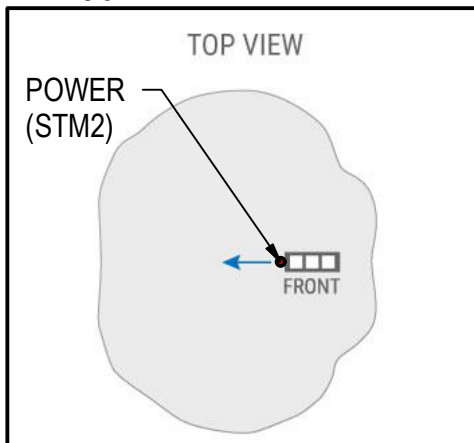
DA-0



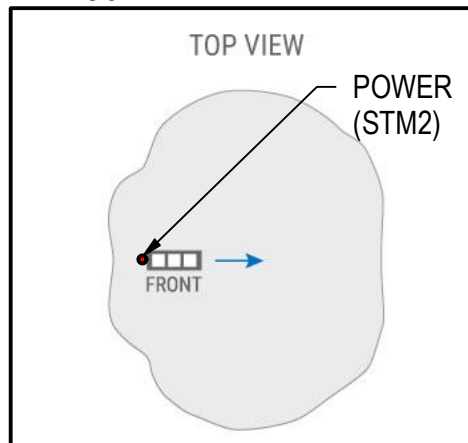
DA-180



DA-90L



DA-90R



10/6/22
IS111156X