

IMPORTANT SAFETY AND INSTALLATION INSTRUCTIONS

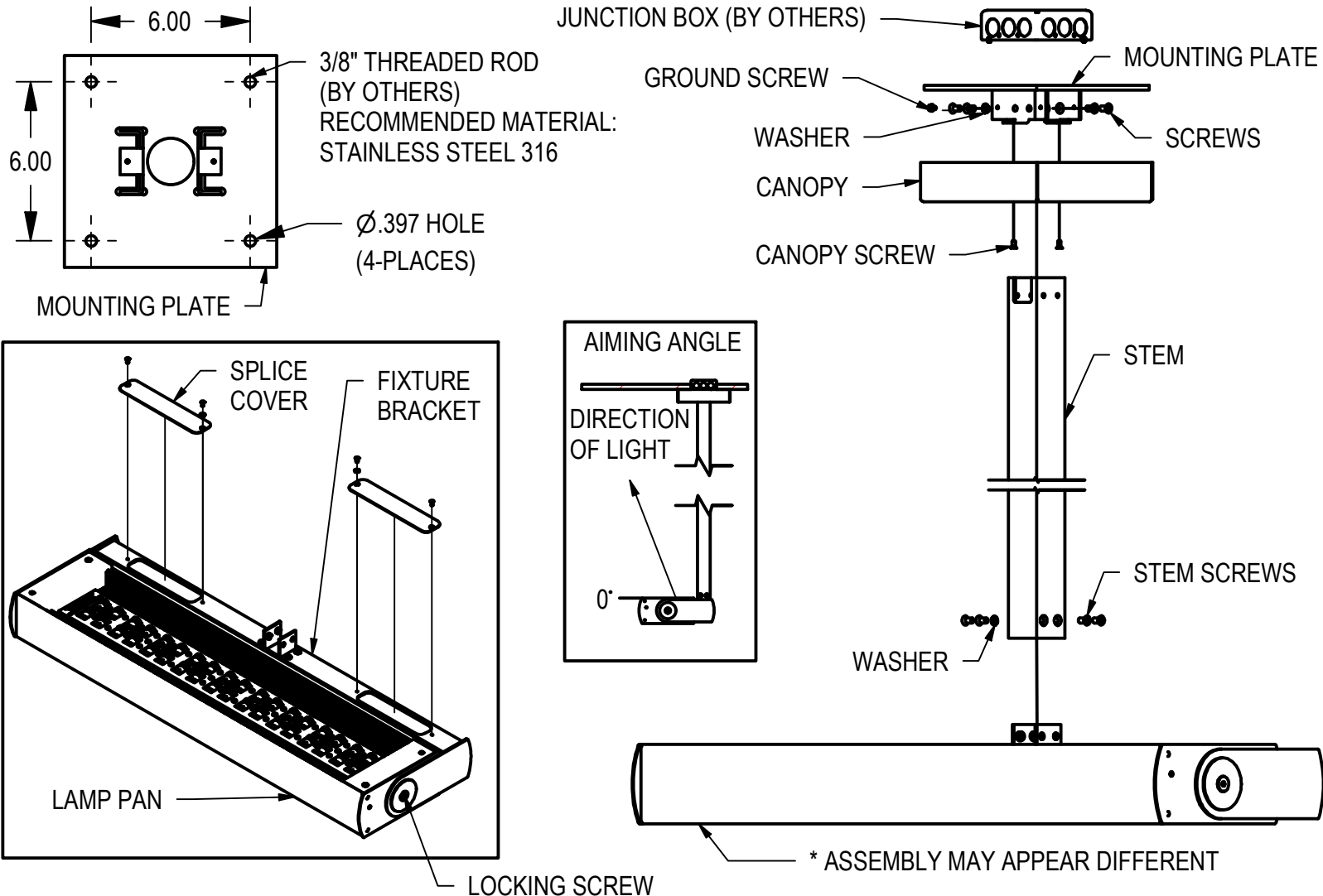
WARNING: Risk of fire and electrical shock. This product is to be installed by a qualified electrician only.

CAUTION: When using electrical equipment, basic safety precautions should always be followed including the following: Read all instructions carefully before installation and save

for future use. Make sure installation and all connections are in accordance with National Electrical Code and any local regulations. To avoid possible electrical shock, be sure that the power supply is turned off before installing or servicing this fixture. Servicing should be performed by qualified service personnel.

These instructions do not claim to cover all details or variations. When additional information is desired, please contact your SPI representative.

ECHO EXPANSE SINGLE STEM RIGID MOUNT (STM3)



INSTALLATION:

1. USE MOUNTING PLATE TO LOCATE ANCHOR HOLES BY POSITIONING CENTER OF MOUNTING PLATE OVER JUNCTION BOX (BY OTHERS).
2. CONNECT WIRES AT JUNCTION BOX BEFORE FEEDING WIRES THROUGH THE STEM AND ASSEMBLE STEM TO MOUNTING PLATE.
3. REMOVE SPLICE COVERS. INSTALL LAMP PAN AND FIXTURE BRACKET TO STEM. CONNECT WIRES IN HOUSING AND INSTALL SPLICE COVERS.
4. TO SECURE CANOPY, SLIDE CANOPY UP STEM TO CEILING USING SCREWS PROVIDED. SECURE TO MOUNTING PLATE.
5. UNLESS OTHERWISE SPECIFIED, MOUNT FIXTURE HORIZONTALLY AS SHOWN.
FOR CUSTOM AIMING, LOOSEN LOCKING SCREWS, AIM FIXTURE, AND RE-TIGHTEN W/ LOCK SCREWS.

7/27/22
IS113533X

IMPORTANT SAFETY AND INSTALLATION INSTRUCTIONS

WARNING: Risk of fire and electrical shock. This product is to be installed by a qualified electrician only.

CAUTION: When using electrical equipment, basic safety precautions should always be followed including the following: Read all instructions carefully before installation and save

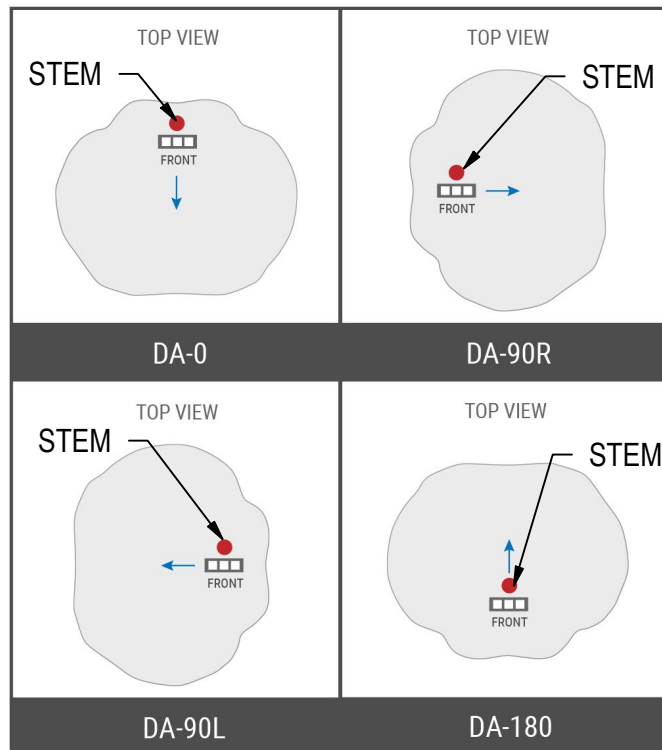
for future use. Make sure installation and all connections are in accordance with National Electrical Code and any local regulations. To avoid possible electrical shock, be sure that the power supply is turned off before installing or servicing this fixture. Servicing should be performed by qualified service personnel.

These instructions do not claim to cover all details or variations. When additional information is desired, please contact your SPI representative.

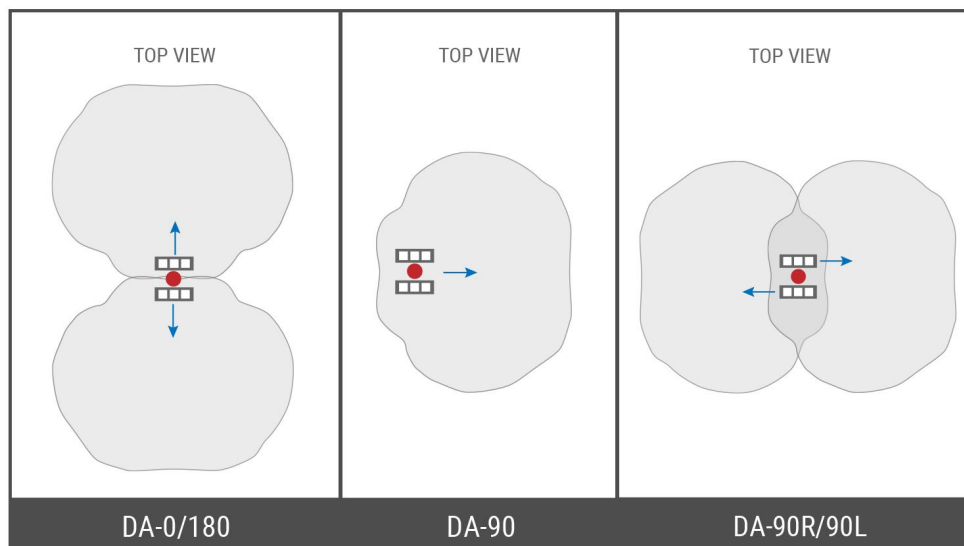
ECHO EXPANSE SINGLE STEM RIGID MOUNT (STM3)

1. FIND LABEL ON LIGHT ENGINE TO DETERMINE DIRECTION OF LIGHT.

SINGLE HEAD



MULTI-HEAD



7/27/22
IS113533X