

IMPORTANT SAFETY AND INSTALLATION INSTRUCTIONS

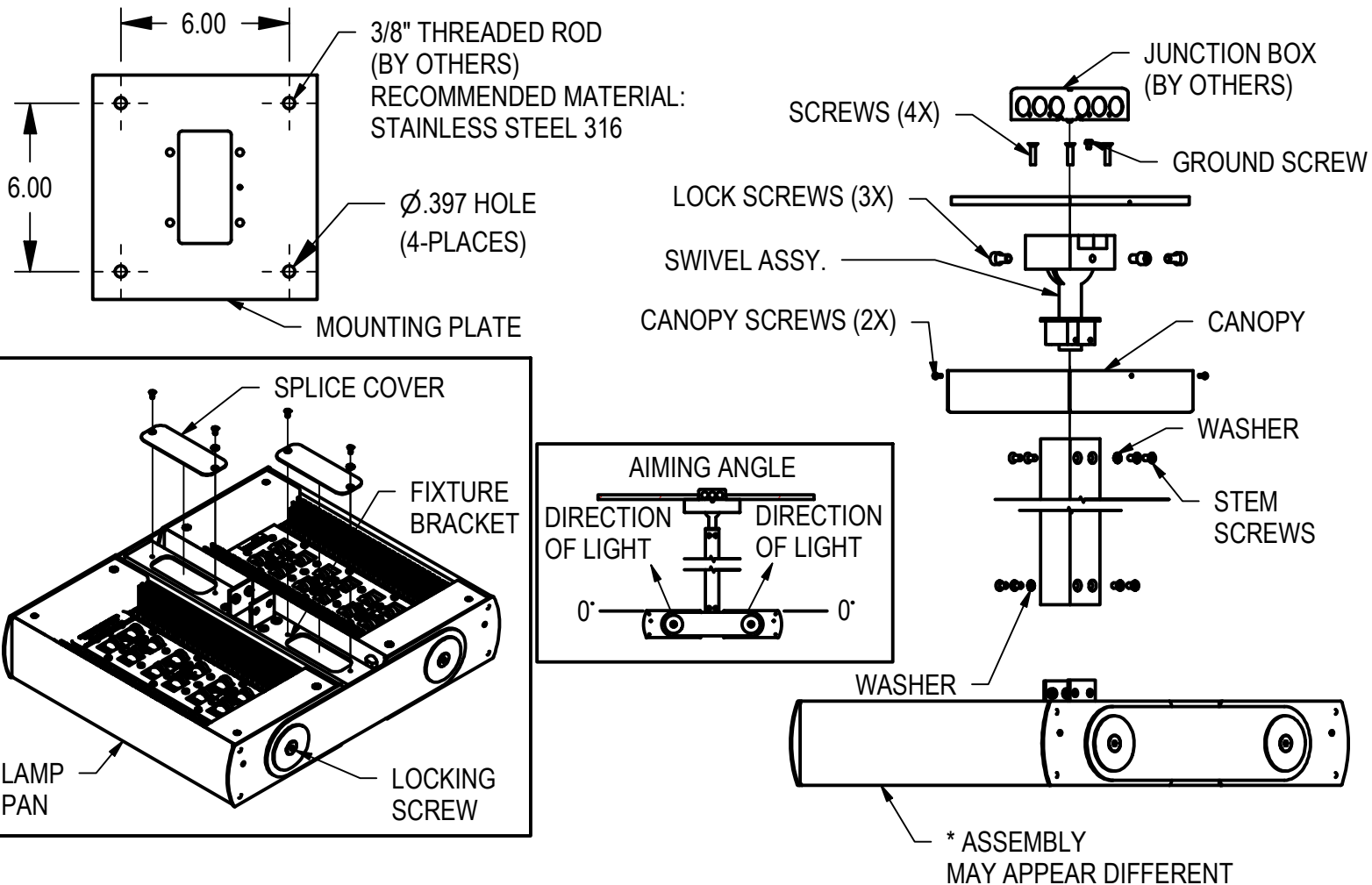
WARNING: Risk of fire and electrical shock. This product is to be installed by a qualified electrician only.

CAUTION: When using electrical equipment, basic safety precautions should always be followed including the following: Read all instructions carefully before installation and save

for future use. Make sure installation and all connections are in accordance with National Electrical Code and any local regulations. To avoid possible electrical shock, be sure that the power supply is turned off before installing or servicing this fixture. Servicing should be performed by qualified service personnel.

These instructions do not claim to cover all details or variations. When additional information is desired, please contact your SPI representative.

ECHO EXPANSE SINGLE STEM ANGLE MOUNT (STM4)



INSTALLATION:

1. USE MOUNTING PLATE TO LOCATE ANCHOR HOLES BY POSITIONING CENTER OF MOUNTING PLATE OVER JUNCTION BOX (BY OTHERS).
2. CONNECT WIRES AT JUNCTION BOX BEFORE FEEDING WIRES THROUGH THE SWIVEL ASSY. ATTACH STEM TO SWIVEL ASSY. USING PROVIDED SCREWS AND WASHER TO GROUND STEM.
3. REMOVE SPLICE COVERS FROM FIXTURE BRACKET. INSTALL LAMP PAN AND FIXTURE BRACKET TO STEM USING PROVIDED SCREWS AND WASHER TO GROUND FIXTURE. CONNECT WIRES IN HOUSING AND INSTALL SPLICE COVERS.
4. USE THE LOCKING SCREWS TO SECURE SWIVEL ASSY. IN DESIRED POSITION. SLIDE CANOPY UP STEM TO CEILING, USE SCREWS PROVIDED AND SECURE TO MOUNTING PLATE.
5. UNLESS OTHERWISE SPECIFIED, MOUNT FIXTURE HORIZONTALLY AS SHOWN.
FOR CUSTOM AIMING, LOOSEN LOCKING SCREWS, AIM FIXTURE, AND RE-TIGHTEN W/ LOCK SCREWS.

8/1/22
IS113534X

IMPORTANT SAFETY AND INSTALLATION INSTRUCTIONS

WARNING: Risk of fire and electrical shock. This product is to be installed by a qualified electrician only.

CAUTION: When using electrical equipment, basic safety precautions should always be followed including the following: Read all instructions carefully before installation and save

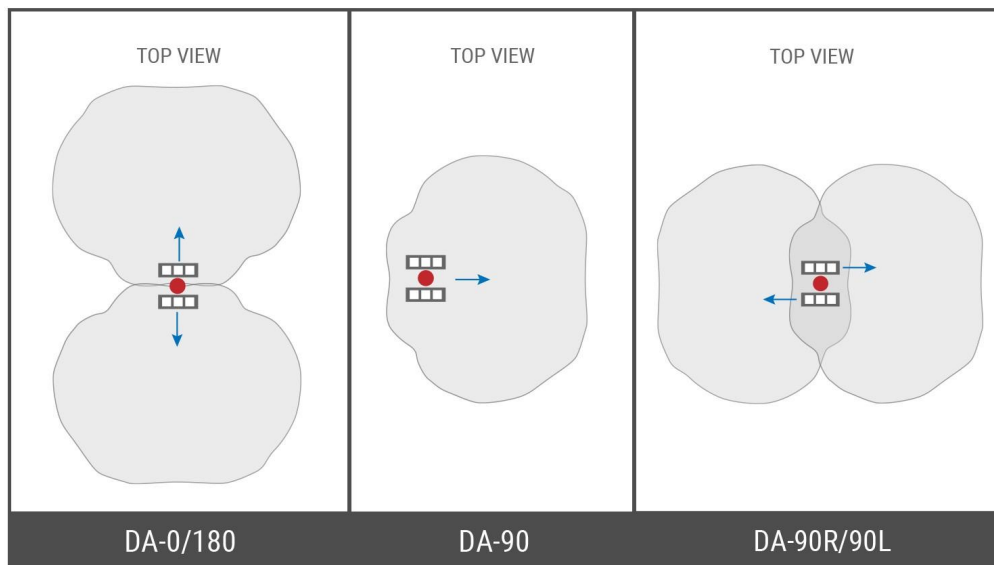
for future use. Make sure installation and all connections are in accordance with National Electrical Code and any local regulations. To avoid possible electrical shock, be sure that the power supply is turned off before installing or servicing this fixture. Servicing should be performed by qualified service personnel.

These instructions do not claim to cover all details or variations. When additional information is desired, please contact your SPI representative.

ECHO EXPANSE SINGLE STEM ANGLE MOUNT (STM4)

1. FIND LABEL ON LIGHT ENGINE TO DETERMINE DIRECTION OF LIGHT.

MULTI HEAD



8/1/22
IS113534X