

# IMPORTANT SAFETY AND INSTALLATION INSTRUCTIONS

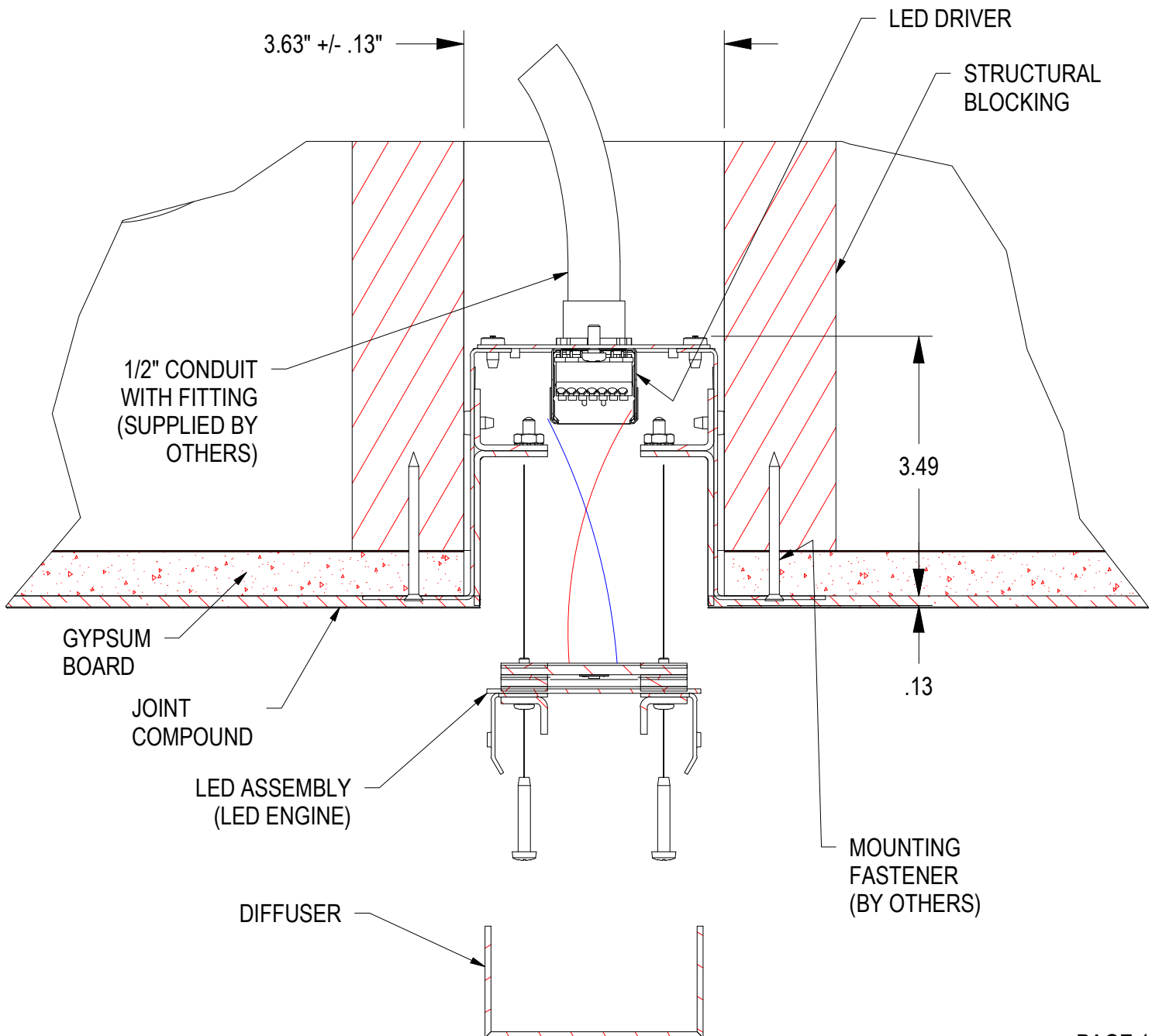
**WARNING:** Risk of fire and electrical shock. This product is to be installed by a qualified electrician only.

**CAUTION:** When using electrical equipment, basic safety precautions should always be followed including the following: Read all instructions carefully before installation and save

for future use. Make sure installation and all connections are in accordance with National Electrical Code and any local regulations. To avoid possible electrical shock, be sure that power supply is turned off before installing or servicing this fixture. Servicing should be performed by qualified service personnel.

These instructions do not claim to cover all details or variations. When additional information is desired, please contact your SPI representative.

## MUD-IN HOUSING - GENERAL CONSTRUCTION



PAGE 1

03/20/23  
IS114504X

# IMPORTANT SAFETY AND INSTALLATION INSTRUCTIONS

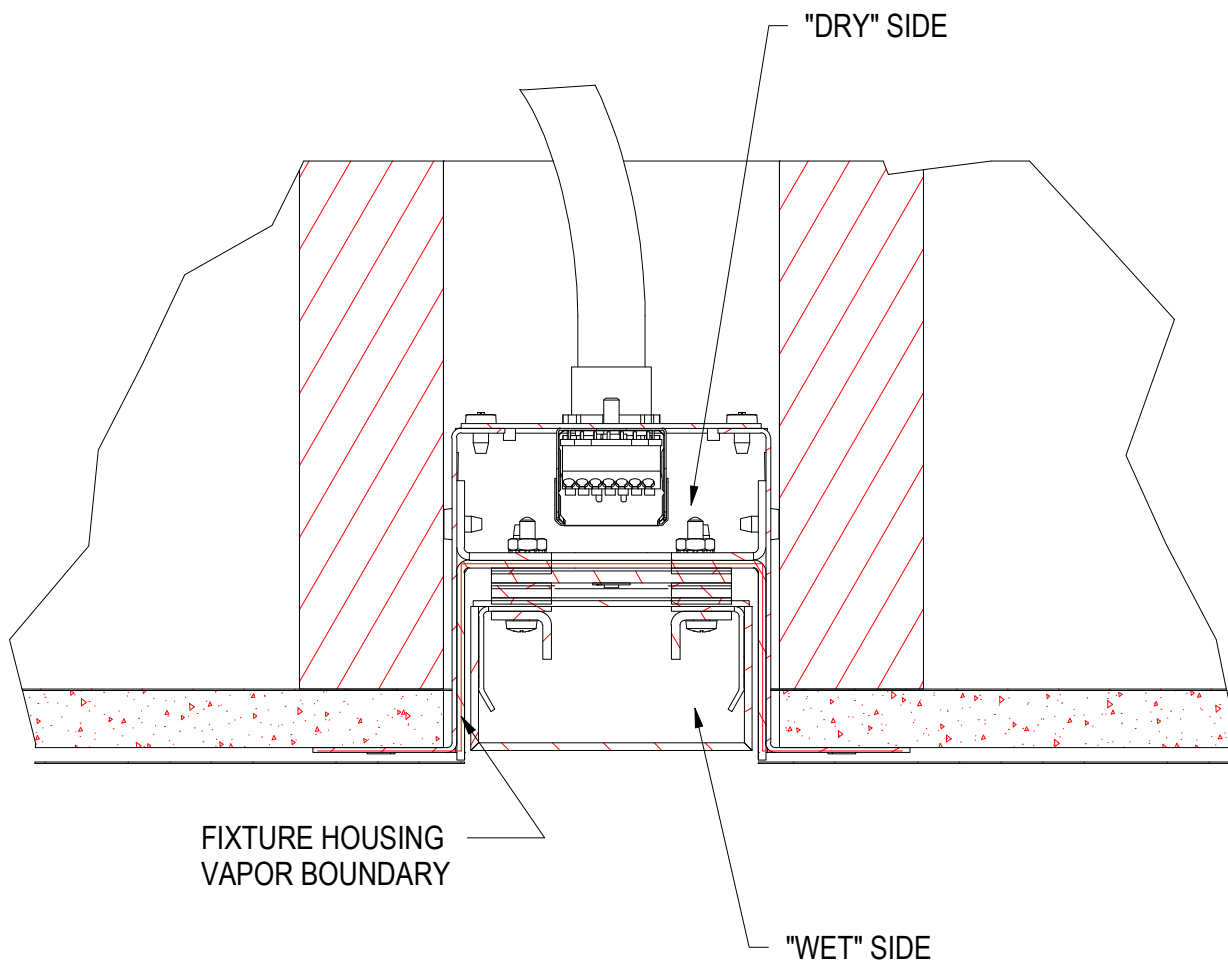
**WARNING:** Risk of fire and electrical shock. This product is to be installed by a qualified electrician only.

**CAUTION:** When using electrical equipment, basic safety precautions should always be followed including the following: Read all instructions carefully before installation and save

for future use. Make sure installation and all connections are in accordance with National Electrical Code and any local regulations. To avoid possible electrical shock, be sure that power supply is turned off before installing or servicing this fixture. Servicing should be performed by qualified service personnel.

These instructions do not claim to cover all details or variations. When additional information is desired, please contact your SPI representative.

## MUD-IN HOUSING - WALL/CEILING SYSTEM INTEGRATION



### VAPOR BARRIER BOUNDARY

To insure building performance integrity, the fixture is to be integrated into any required vapor barrier system. Fixture housing to be sealed to vapor barrier system with methods recommended by system manufacturer.

PAGE 2

03/20/23  
IS114504X

# IMPORTANT SAFETY AND INSTALLATION INSTRUCTIONS

**WARNING:** Risk of fire and electrical shock. This product is to be installed by a qualified electrician only.

**CAUTION:** When using electrical equipment, basic safety precautions should always be followed including the following: Read all instructions carefully before installation and save

for future use. Make sure installation and all connections are in accordance with National Electrical Code and any local regulations. To avoid possible electrical shock, be sure that power supply is turned off before installing or servicing this fixture. Servicing should be performed by qualified service personnel.

These instructions do not claim to cover all details or variations. When additional information is desired, please contact your SPI representative.

## MUD-IN HOUSING - ROUGH IN

### STEP 1

Prepare wall or ceiling blocking as shown to support mud-in flange.

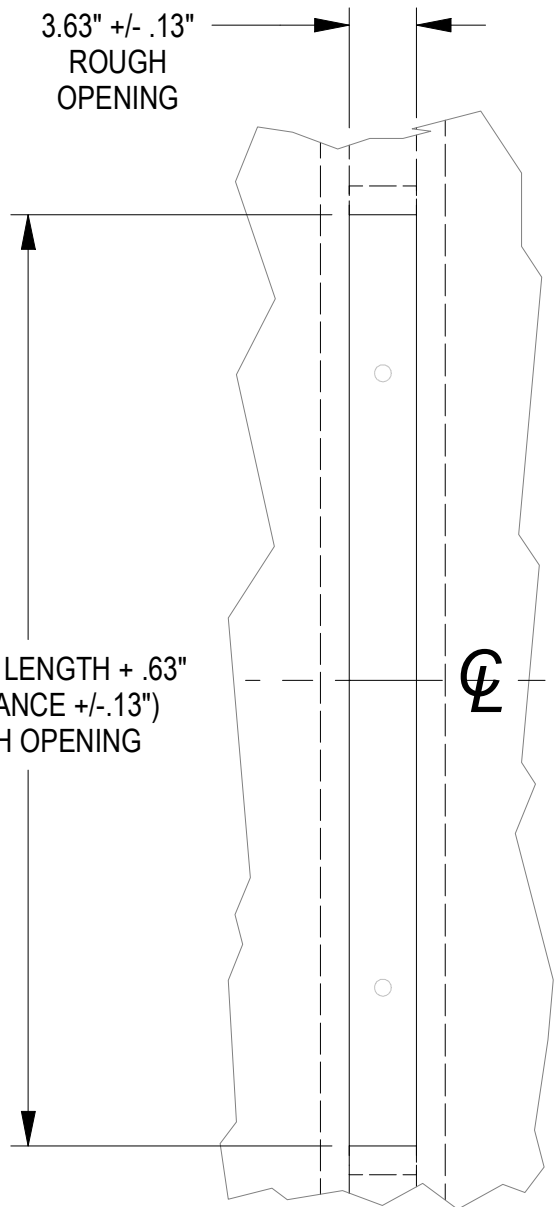
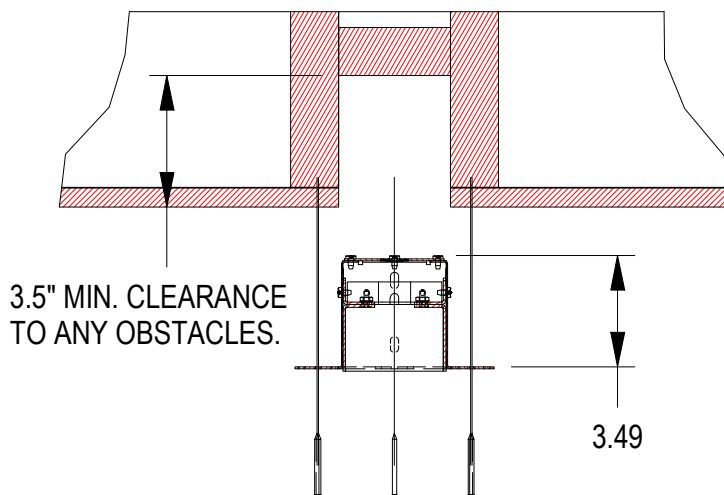
Allow clearance for conduit attachment at any of the knockout locations. Knockouts are for 1/2" conduit fittings (.875" diameter)

### STEP 2

Run conduit to location desired.

### STEP 3

Apply drywall and cut slot to rough dimensions.



**MOUNTING SURFACE DETAIL**  
(WITH STRUCTURAL BLOCKING)

PAGE 3

03/20/23  
IS114504X

# IMPORTANT SAFETY AND INSTALLATION INSTRUCTIONS

**WARNING:** Risk of fire and electrical shock. This product is to be installed by a qualified electrician only.

**CAUTION:** When using electrical equipment, basic safety precautions should always be followed including the following: Read all instructions carefully before installation and save

for future use. Make sure installation and all connections are in accordance with National Electrical Code and any local regulations. To avoid possible electrical shock, be sure that power supply is turned off before installing or servicing this fixture. Servicing should be performed by qualified service personnel.

These instructions do not claim to cover all details or variations. When additional information is desired, please contact your SPI representative.

---

## MUD-IN HOUSING

---

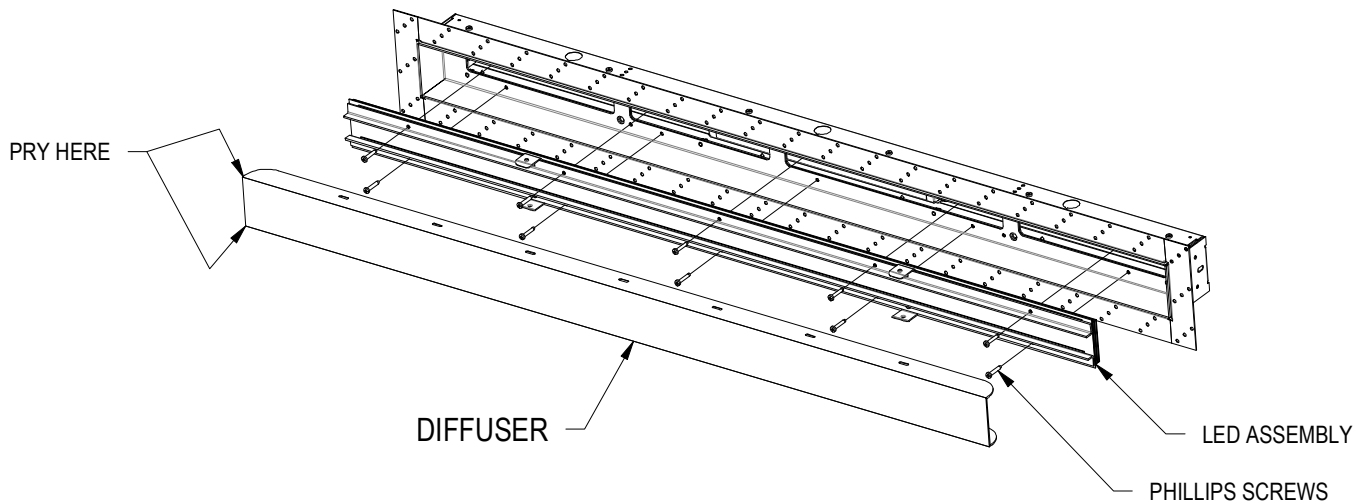
### INSTALLATION INSTRUCTIONS

#### STEP 1

Unpack Fixture to prepare for installation.

Remove acrylic diffuser by carefully prying near the edges of the diffuser at the end. Avoid prying in the center part of the end as this may crack the diffuser.

Unthread the phillips screws holding the LED Assembly to the housing. Lift out LED Assembly and disconnect wires.



# IMPORTANT SAFETY AND INSTALLATION INSTRUCTIONS

**WARNING:** Risk of fire and electrical shock. This product is to be installed by a qualified electrician only.

**CAUTION:** When using electrical equipment, basic safety precautions should always be followed including the following: Read all instructions carefully before installation and save

for future use. Make sure installation and all connections are in accordance with National Electrical Code and any local regulations. To avoid possible electrical shock, be sure that power supply is turned off before installing or servicing this fixture. Servicing should be performed by qualified service personnel.

These instructions do not claim to cover all details or variations. When additional information is desired, please contact your SPI representative.

---

## MUD-IN HOUSING

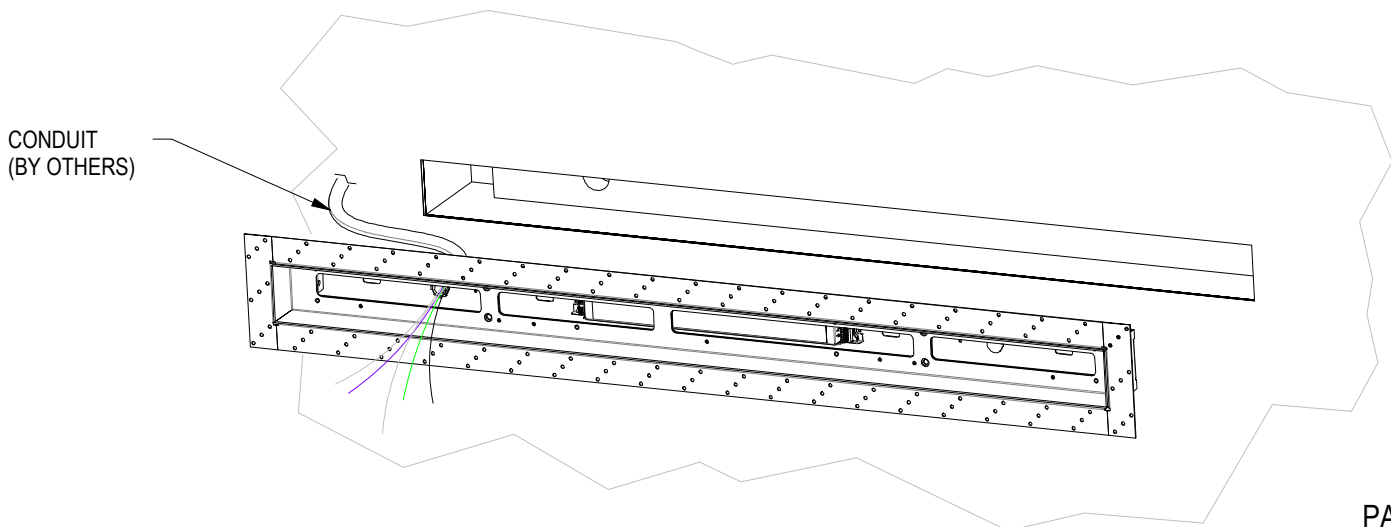
---

### STEP 2

Attach conduit (by others) and conduit fitting (by others) to housing. Use factory knock-outs or punch new hole as needed to clear obstacles. Feed through branch circuit wires (by others.)

If applicable, apply recommended seal between housing and vapor barrier. (This may be a sealing compound, tape, caulk, or other method recommended by the vapor barrier manufacturer.)

Position housing into recessed slot and secure flange to surface with dry wall fasteners (by others.)



PAGE 5

03/20/23  
IS114504X

# IMPORTANT SAFETY AND INSTALLATION INSTRUCTIONS

**WARNING:** Risk of fire and electrical shock. This product is to be installed by a qualified electrician only.

**CAUTION:** When using electrical equipment, basic safety precautions should always be followed including the following: Read all instructions carefully before installation and save

for future use. Make sure installation and all connections are in accordance with National Electrical Code and any local regulations. To avoid possible electrical shock, be sure that power supply is turned off before installing or servicing this fixture. Servicing should be performed by qualified service personnel.

These instructions do not claim to cover all details or variations. When additional information is desired, please contact your SPI representative.

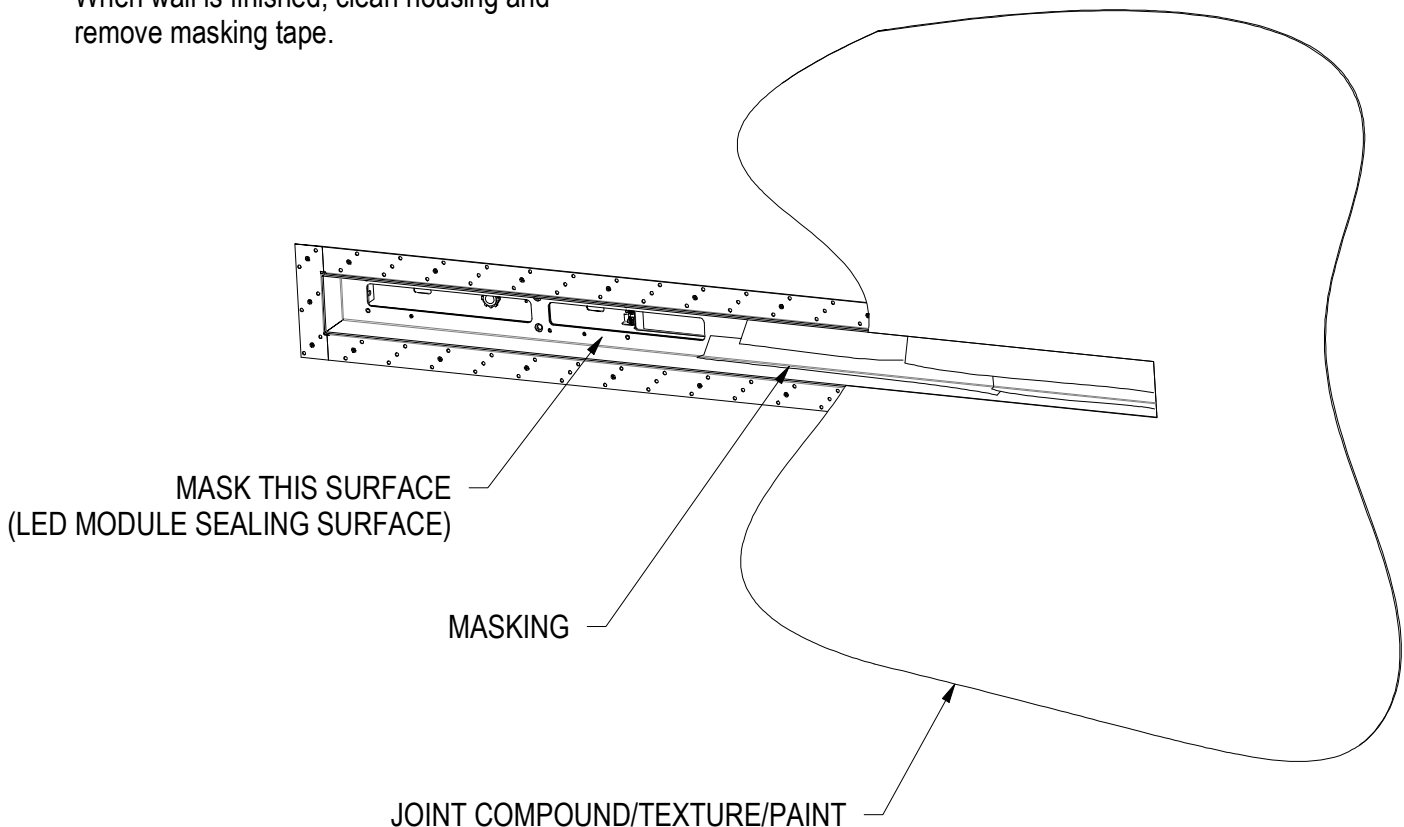
## MUD-IN HOUSING

### STEP 3

Apply masking tape to inner surface of housing where the LED modules seal to housing. It is acceptable to bring masking up along sides of housing.

Finish wall over mounting flange. Avoid getting excessive joint compound and paint in fixture housing.

When wall is finished, clean housing and remove masking tape.



# IMPORTANT SAFETY AND INSTALLATION INSTRUCTIONS

**WARNING:** Risk of fire and electrical shock. This product is to be installed by a qualified electrician only.

**CAUTION:** When using electrical equipment, basic safety precautions should always be followed including the following: Read all instructions carefully before installation and save

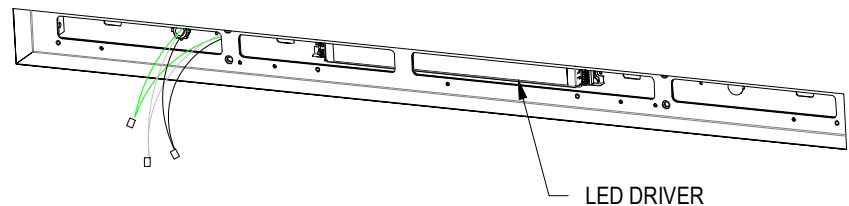
for future use. Make sure installation and all connections are in accordance with National Electrical Code and any local regulations. To avoid possible electrical shock, be sure that power supply is turned off before installing or servicing this fixture. Servicing should be performed by qualified service personnel.

These instructions do not claim to cover all details or variations. When additional information is desired, please contact your SPI representative.

## MUD-IN HOUSING

### STEP 4

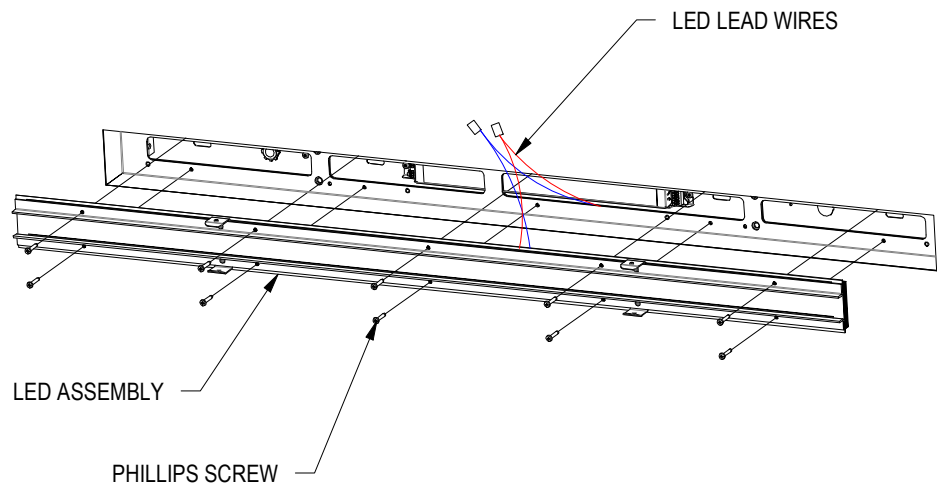
Complete wiring to LED driver. Cap any unused dimming leads. Neatly bundle wiring to prevent pinches when installing LED Assembly.



### STEP 5

Connect LED lead wires to LED driver. Place LED Assembly within Housing, being careful not to pinch and wires.

Double check for any pinch wires then secure LED Assembly to Housing with phillips screws.



# IMPORTANT SAFETY AND INSTALLATION INSTRUCTIONS

**WARNING:** Risk of fire and electrical shock. This product is to be installed by a qualified electrician only.

**CAUTION:** When using electrical equipment, basic safety precautions should always be followed including the following: Read all instructions carefully before installation and save

for future use. Make sure installation and all connections are in accordance with National Electrical Code and any local regulations. To avoid possible electrical shock, be sure that power supply is turned off before installing or servicing this fixture. Servicing should be performed by qualified service personnel.

These instructions do not claim to cover all details or variations. When additional information is desired, please contact your SPI representative.

## MUD-IN HOUSING

### STEP 6

Test fixture operation.

Install Diffuser by placing legs of the Diffuser between the housing wall and the retaining bracket. Carefully press Diffuser into housing until it bottoms.

**NOTE:** The retaining brackets go to the inside of the diffuser. Make sure no retaining brackets are visible on the outside of the diffuser.

