

IMPORTANT SAFETY AND INSTALLATION INSTRUCTIONS

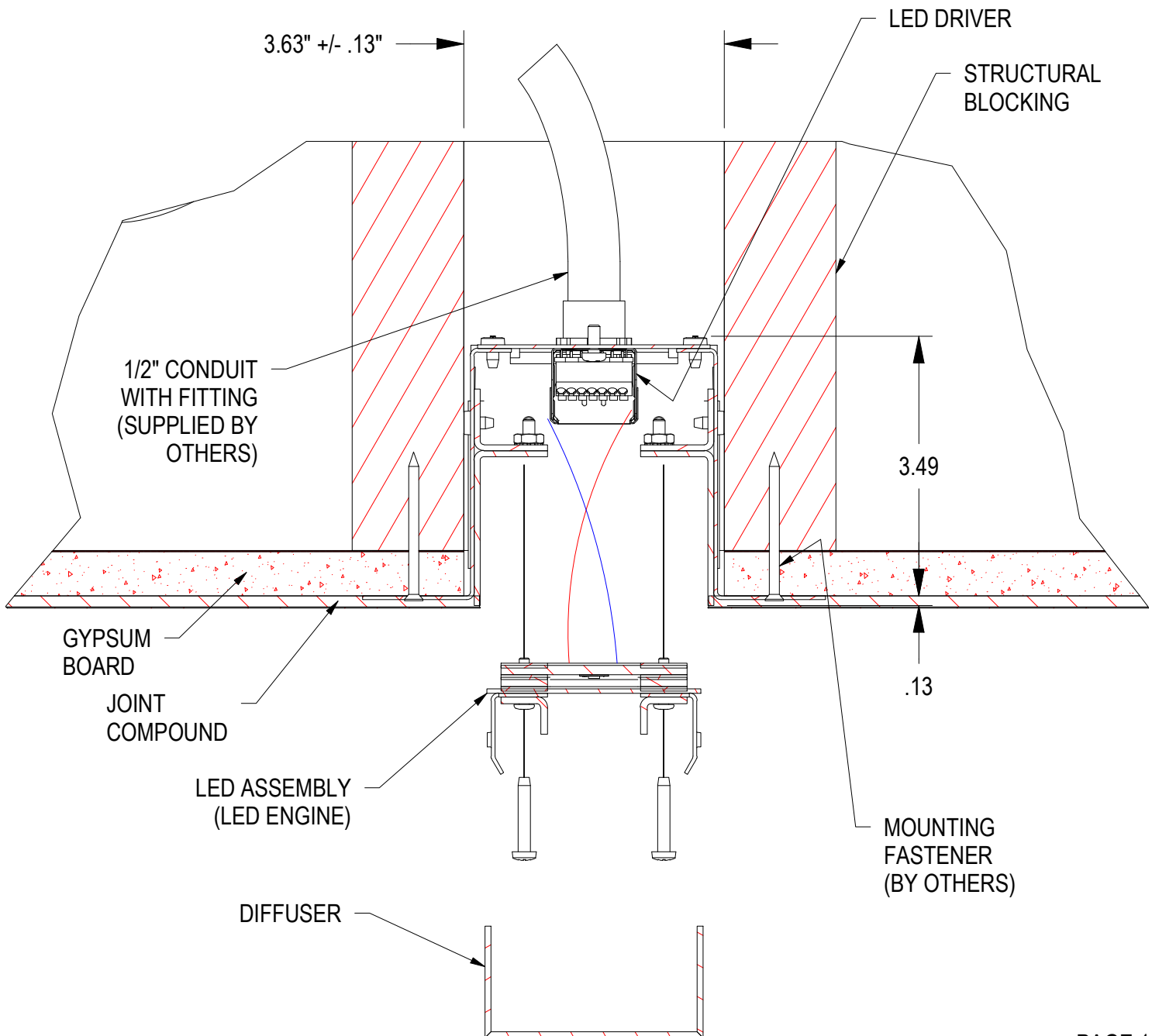
WARNING: Risk of fire and electrical shock. This product is to be installed by a qualified electrician only.

CAUTION: When using electrical equipment, basic safety precautions should always be followed including the following: Read all instructions carefully before installation and save

for future use. Make sure installation and all connections are in accordance with National Electrical Code and any local regulations. To avoid possible electrical shock, be sure that power supply is turned off before installing or servicing this fixture. Servicing should be performed by qualified service personnel.

These instructions do not claim to cover all details or variations. When additional information is desired, please contact your SPI representative.

MUD-IN HOUSING - GENERAL CONSTRUCTION - LINEAR RUN



PAGE 1

03/21/23
IS114505X

IMPORTANT SAFETY AND INSTALLATION INSTRUCTIONS

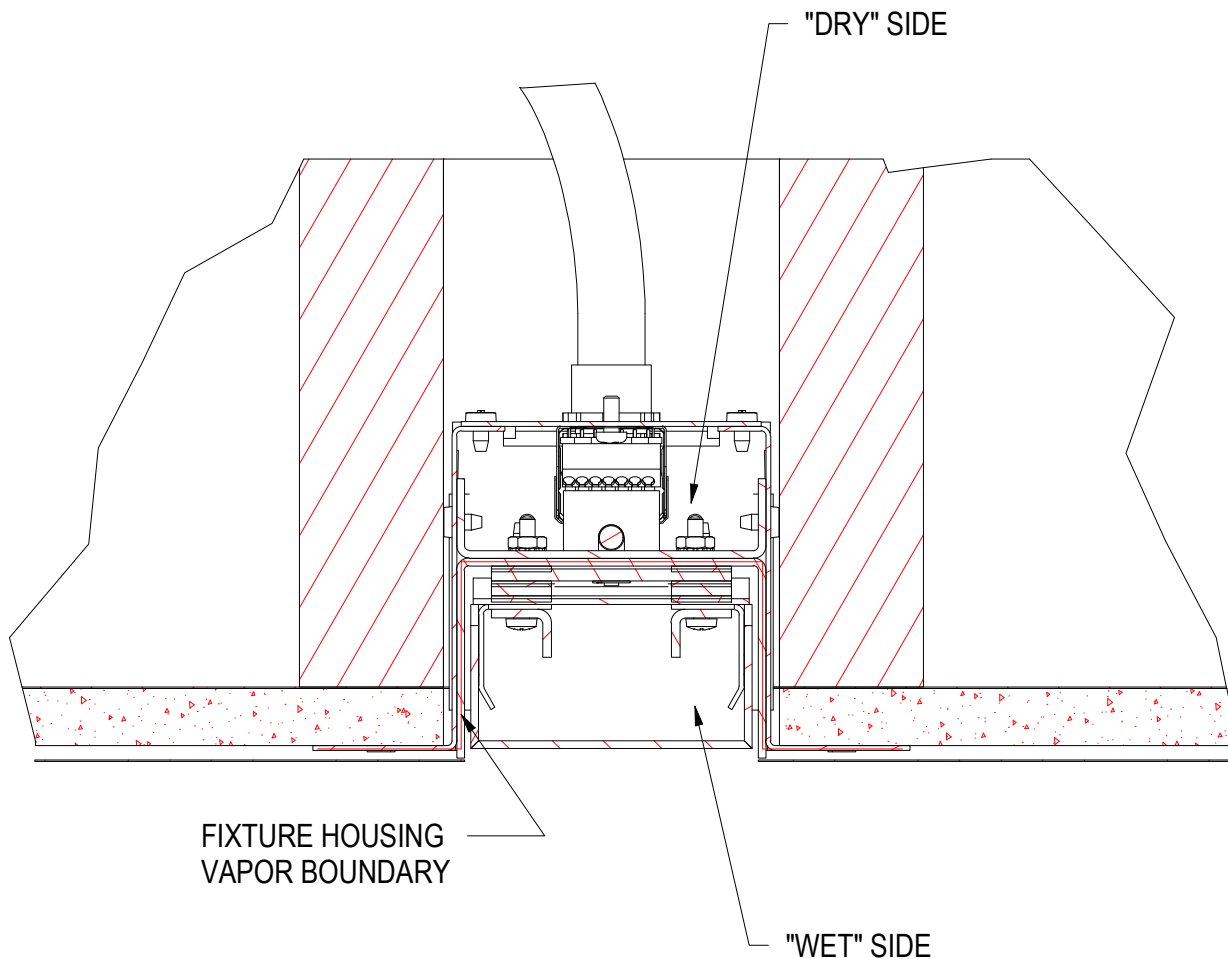
WARNING: Risk of fire and electrical shock. This product is to be installed by a qualified electrician only.

CAUTION: When using electrical equipment, basic safety precautions should always be followed including the following: Read all instructions carefully before installation and save

for future use. Make sure installation and all connections are in accordance with National Electrical Code and any local regulations. To avoid possible electrical shock, be sure that power supply is turned off before installing or servicing this fixture. Servicing should be performed by qualified service personnel.

These instructions do not claim to cover all details or variations. When additional information is desired, please contact your SPI representative.

MUD-IN HOUSING - WALL/CEILING SYSTEM INTEGRATION



VAPOR BARRIER BOUNDARY

To insure building performance integrity, the fixture is to be integrated into any required vapor barrier system. Fixture housing to be sealed to vapor barrier system with methods recommended by system manufacturer.

PAGE 2

03/21/23
IS114505X

IMPORTANT SAFETY AND INSTALLATION INSTRUCTIONS

WARNING: Risk of fire and electrical shock. This product is to be installed by a qualified electrician only.

CAUTION: When using electrical equipment, basic safety precautions should always be followed including the following: Read all instructions carefully before installation and save

for future use. Make sure installation and all connections are in accordance with National Electrical Code and any local regulations. To avoid possible electrical shock, be sure that power supply is turned off before installing or servicing this fixture. Servicing should be performed by qualified service personnel.

These instructions do not claim to cover all details or variations. When additional information is desired, please contact your SPI representative.

MUD-IN HOUSING - ROUGH IN - LINEAR RUN

STEP 1

Prepare wall or ceiling blocking as shown to support mud-in flange.

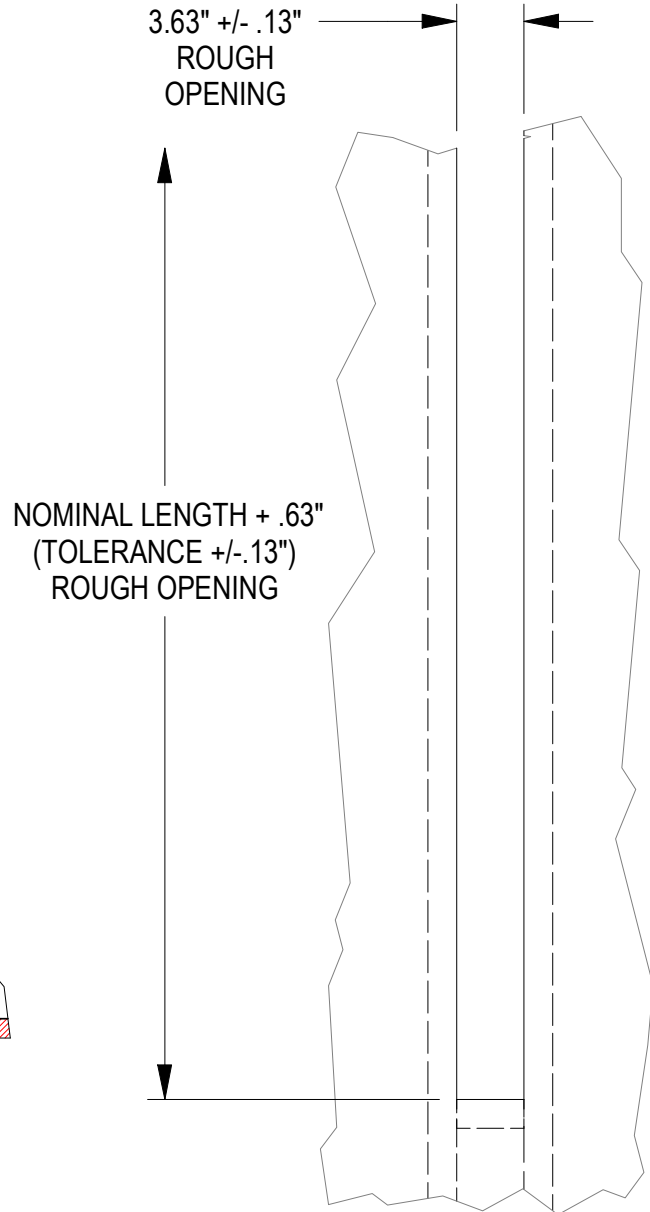
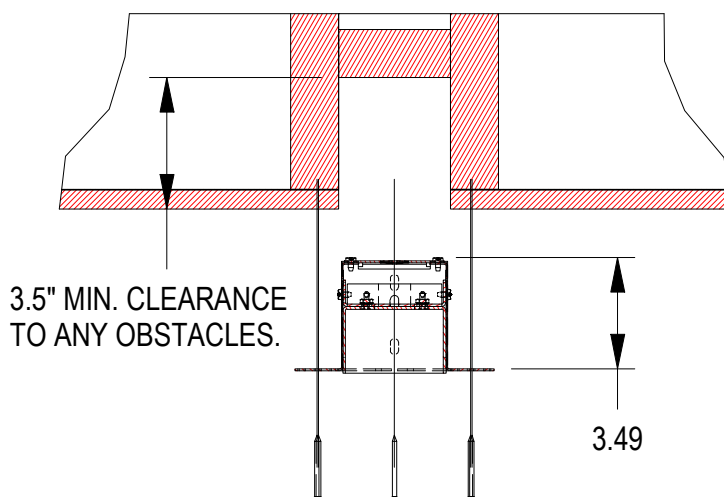
Allow clearance for conduit attachment at any of the knockout locations. Knockouts are for 1/2" conduit fittings (.875" diameter)

STEP 2

Run conduit to location desired.

STEP 3

Apply drywall and cut slot to rough dimensions.



MOUNTING SURFACE DETAIL (WITH STRUCTURAL BLOCKING)

PAGE 3

03/21/23
IS114505X

IMPORTANT SAFETY AND INSTALLATION INSTRUCTIONS

WARNING: Risk of fire and electrical shock. This product is to be installed by a qualified electrician only.

CAUTION: When using electrical equipment, basic safety precautions should always be followed including the following: Read all instructions carefully before installation and save

for future use. Make sure installation and all connections are in accordance with National Electrical Code and any local regulations. To avoid possible electrical shock, be sure that power supply is turned off before installing or servicing this fixture. Servicing should be performed by qualified service personnel.

These instructions do not claim to cover all details or variations. When additional information is desired, please contact your SPI representative.

MUD-IN HOUSING - LINEAR RUN

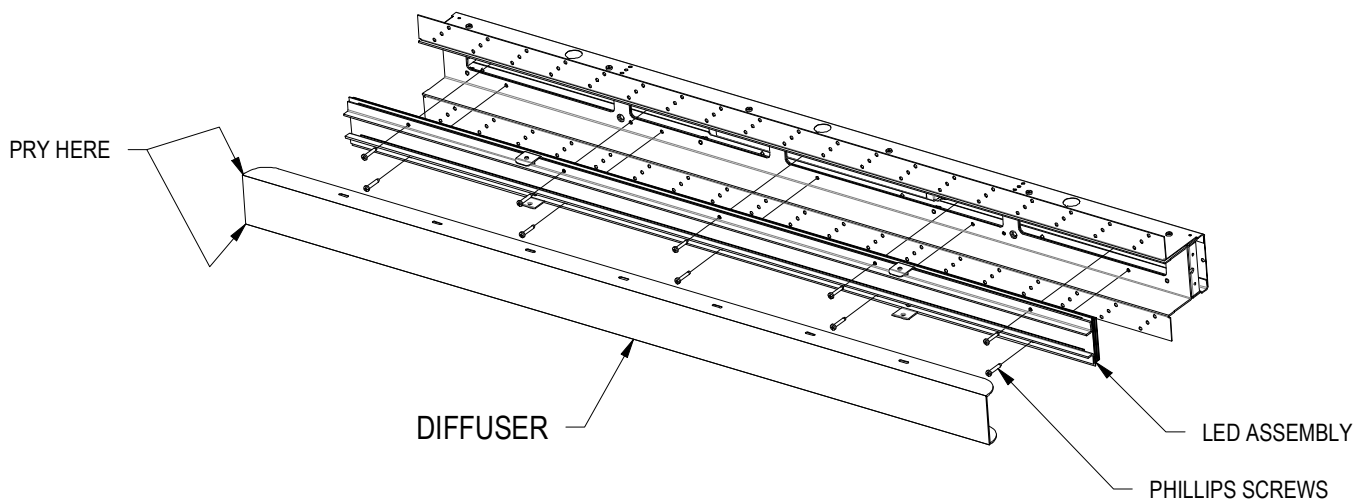
INSTALLATION INSTRUCTIONS

STEP 1

Unpack Fixture to prepare for installation.

Remove acrylic diffuser by carefully prying near the edges of the diffuser at the end. Avoid prying in the center part of the end as this may crack the diffuser.

Unthread the phillips screws holding the LED Assembly to the housing. Lift out LED Assembly and disconnect wires.



IMPORTANT SAFETY AND INSTALLATION INSTRUCTIONS

WARNING: Risk of fire and electrical shock. This product is to be installed by a qualified electrician only.

CAUTION: When using electrical equipment, basic safety precautions should always be followed including the following: Read all instructions carefully before installation and save

for future use. Make sure installation and all connections are in accordance with National Electrical Code and any local regulations. To avoid possible electrical shock, be sure that power supply is turned off before installing or servicing this fixture. Servicing should be performed by qualified service personnel.

These instructions do not claim to cover all details or variations. When additional information is desired, please contact your SPI representative.

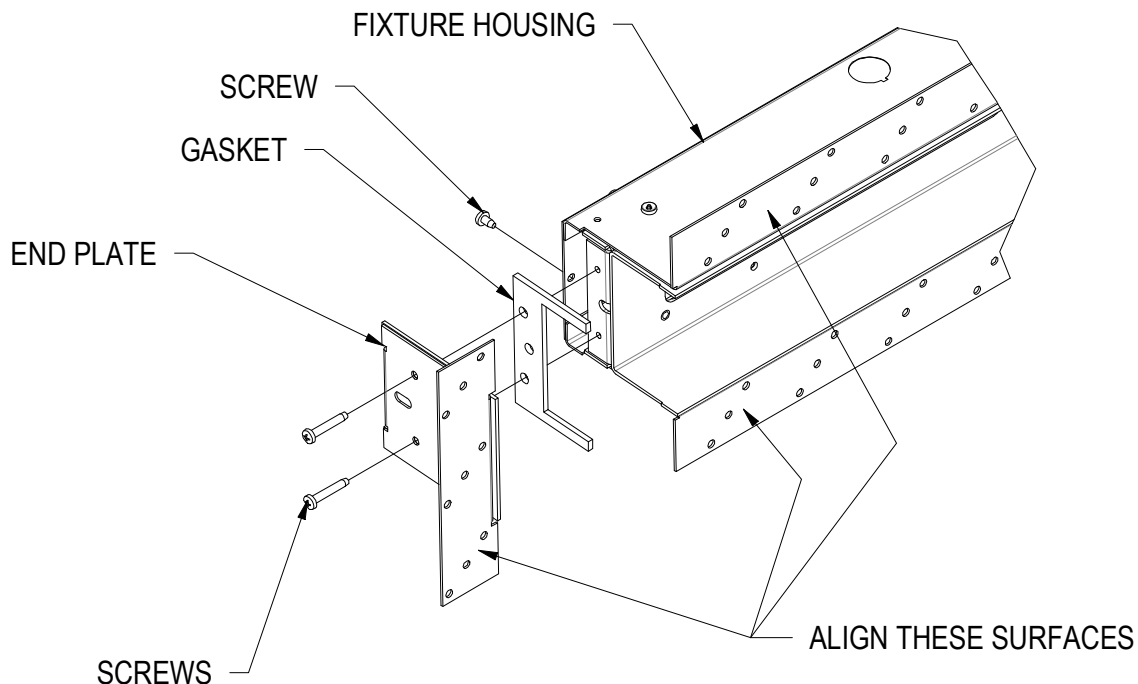
MUD-IN HOUSING - LINEAR RUN

STEP 2

Fixtures located at the start and end of linear runs require a gasketed end plate.

Remove the backing paper from end plate gasket and adhere to fixture housing. Align the mounting holes and make sure gasket legs are centered on housing sides. Secure end plate to fixture housing with supplied screws. Align flange surfaces before tightening screws to compress the gasket.

Repeat for other fixture at end of linear run.



IMPORTANT SAFETY AND INSTALLATION INSTRUCTIONS

WARNING: Risk of fire and electrical shock. This product is to be installed by a qualified electrician only.

CAUTION: When using electrical equipment, basic safety precautions should always be followed including the following: Read all instructions carefully before installation and save

for future use. Make sure installation and all connections are in accordance with National Electrical Code and any local regulations. To avoid possible electrical shock, be sure that power supply is turned off before installing or servicing this fixture. Servicing should be performed by qualified service personnel.

These instructions do not claim to cover all details or variations. When additional information is desired, please contact your SPI representative.

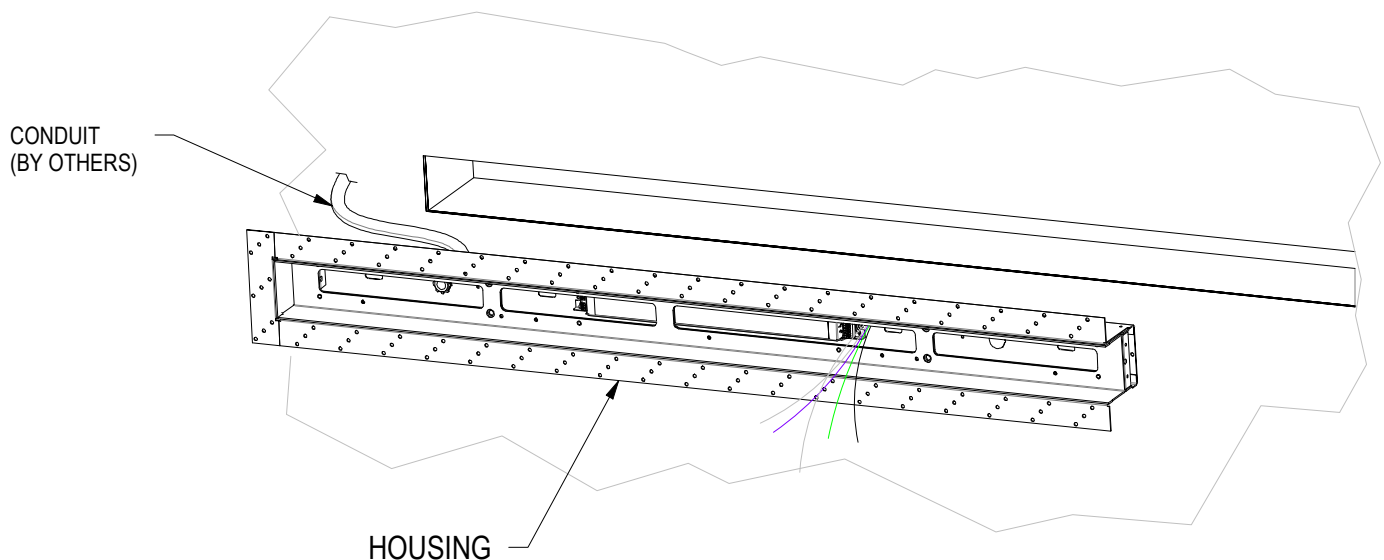
MUD-IN HOUSING - LINEAR RUN

STEP 3

Attach conduit (by others) and conduit fitting (by others) to housing. Use factory knock-outs or punch new hole as needed to clear obstacles. Feed through branch circuit wires (by others.)

If applicable, apply recommended seal between housing and vapor barrier. (This may be a sealing compound, tape, caulk, or other method recommended by the vapor barrier manufacturer.)

Position housing into recessed slot and secure flange to surface with dry wall fasteners (by others.)



PAGE 6

03/21/23
IS114505X

IMPORTANT SAFETY AND INSTALLATION INSTRUCTIONS

WARNING: Risk of fire and electrical shock. This product is to be installed by a qualified electrician only.

CAUTION: When using electrical equipment, basic safety precautions should always be followed including the following: Read all instructions carefully before installation and save

for future use. Make sure installation and all connections are in accordance with National Electrical Code and any local regulations. To avoid possible electrical shock, be sure that power supply is turned off before installing or servicing this fixture. Servicing should be performed by qualified service personnel.

These instructions do not claim to cover all details or variations. When additional information is desired, please contact your SPI representative.

MUD-IN HOUSING - LINEAR RUN

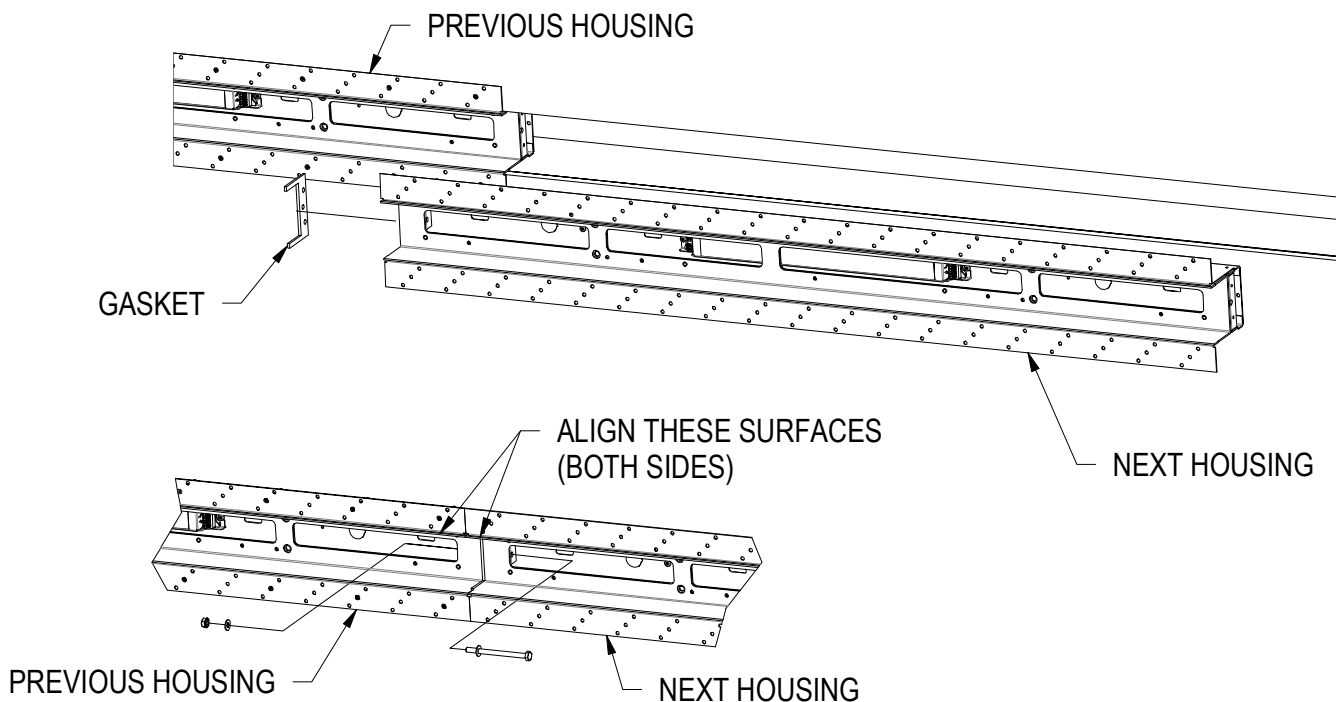
STEP 4

A gasket is required between housing sections. Remove the backing paper from the end plate gasket and adhere to fixture housing. Align the mounting holes and make sure gasket legs are centered on housing sides.

If applicable, apply recommended seal between housing and vapor barrier. (This may be a sealing compound, tape, caulk, or other method recommended by the vapor barrier manufacturer.)

Position next housing into recessed slot and slide housing up to previous housing. Secure connection and compress gasket with supplied hardware as shown in HOUSING CONNECTION DETAIL. Finish securing housing flange to surface with dry wall fasteners (by others.)

Repeat for remaining sections in linear run.



PAGE 7

HOUSING CONNECTION DETAIL

03/21/23
IS114505X

IMPORTANT SAFETY AND INSTALLATION INSTRUCTIONS

WARNING: Risk of fire and electrical shock. This product is to be installed by a qualified electrician only.

CAUTION: When using electrical equipment, basic safety precautions should always be followed including the following: Read all instructions carefully before installation and save

for future use. Make sure installation and all connections are in accordance with National Electrical Code and any local regulations. To avoid possible electrical shock, be sure that power supply is turned off before installing or servicing this fixture. Servicing should be performed by qualified service personnel.

These instructions do not claim to cover all details or variations. When additional information is desired, please contact your SPI representative.

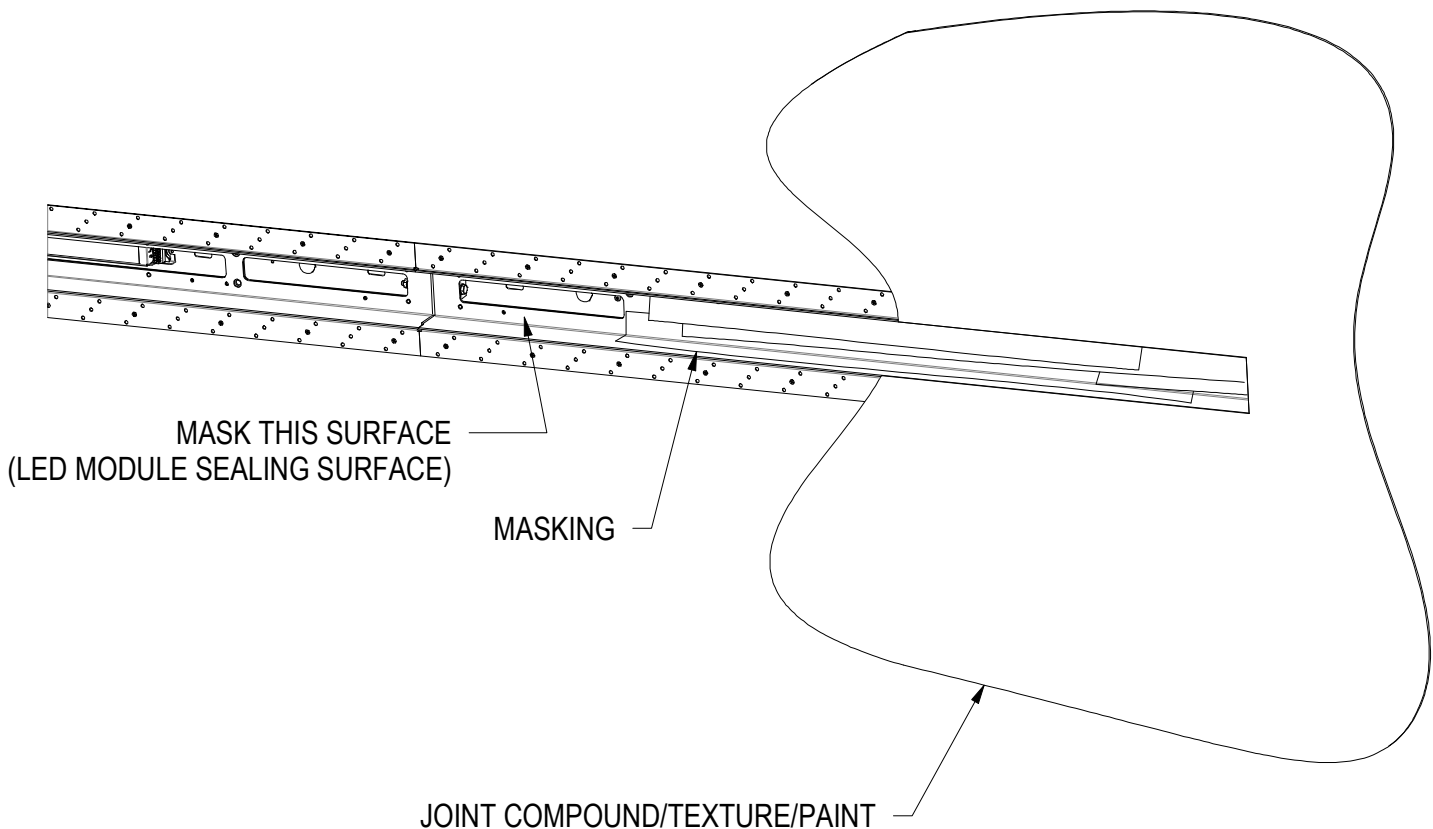
MUD-IN HOUSING - LINEAR RUN

STEP 5

Apply masking tape to inner surface of housing where the LED modules seal to housing. It is acceptable to bring masking up along sides of housing.

Finish wall over mounting flange. Avoid getting excessive joint compound and paint in fixture housing.

When wall is finished, clean housing and remove masking tape.



IMPORTANT SAFETY AND INSTALLATION INSTRUCTIONS

WARNING: Risk of fire and electrical shock. This product is to be installed by a qualified electrician only.

CAUTION: When using electrical equipment, basic safety precautions should always be followed including the following: Read all instructions carefully before installation and save

for future use. Make sure installation and all connections are in accordance with National Electrical Code and any local regulations. To avoid possible electrical shock, be sure that power supply is turned off before installing or servicing this fixture. Servicing should be performed by qualified service personnel.

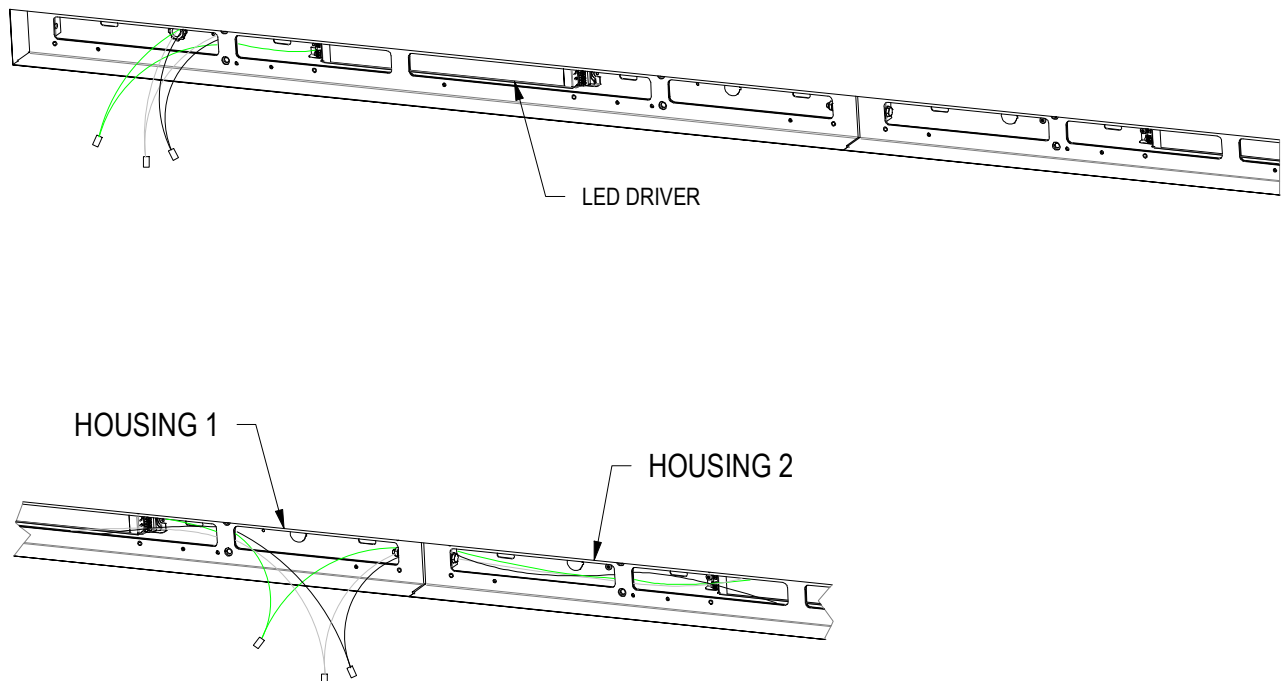
These instructions do not claim to cover all details or variations. When additional information is desired, please contact your SPI representative.

MUD-IN HOUSING - LINEAR RUN

STEP 6

Complete wiring from branch circuit to line voltage and dimming circuits within housing. Complete daisy chain wiring between sections. Cap any unconnected line voltage wires and any unused dimming leads.

Neatly bundle wiring to prevent pinches when installing LED Assembly.



DAISY CHAIN WIRING DETAIL

PAGE 9

03/21/23
IS114505X

IMPORTANT SAFETY AND INSTALLATION INSTRUCTIONS

WARNING: Risk of fire and electrical shock. This product is to be installed by a qualified electrician only.

CAUTION: When using electrical equipment, basic safety precautions should always be followed including the following: Read all instructions carefully before installation and save

for future use. Make sure installation and all connections are in accordance with National Electrical Code and any local regulations. To avoid possible electrical shock, be sure that power supply is turned off before installing or servicing this fixture. Servicing should be performed by qualified service personnel.

These instructions do not claim to cover all details or variations. When additional information is desired, please contact your SPI representative.

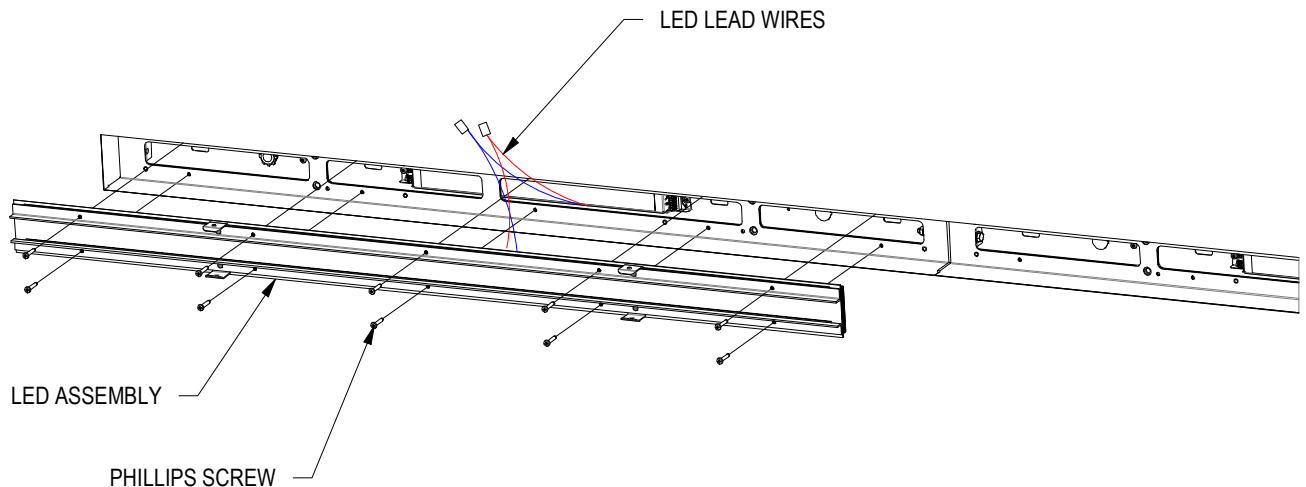
MUD-IN HOUSING - LINEAR RUN

STEP 7

Connect LED lead wires to LED driver.
Place LED Assembly within Housing, being careful not to pinch and wires.

Double check for any pinch wires then secure LED Assembly to Housing with phillips screws.

Repeat for remaining LED assemblies.



IMPORTANT SAFETY AND INSTALLATION INSTRUCTIONS

WARNING: Risk of fire and electrical shock. This product is to be installed by a qualified electrician only.

CAUTION: When using electrical equipment, basic safety precautions should always be followed including the following: Read all instructions carefully before installation and save

for future use. Make sure installation and all connections are in accordance with National Electrical Code and any local regulations. To avoid possible electrical shock, be sure that power supply is turned off before installing or servicing this fixture. Servicing should be performed by qualified service personnel.

These instructions do not claim to cover all details or variations. When additional information is desired, please contact your SPI representative.

MUD-IN HOUSING - LINEAR RUN

STEP 8

Test fixture operation.

Install Diffuser by placing legs of the Diffuser between the housing wall and the retaining bracket. Carefully press Diffuser into housing until it bottoms.

NOTE: The retaining brackets go to the inside of the diffuser. Make sure no retaining brackets are visible on the outside of the diffuser.

Repeat for remaining diffusers.

