

IMPORTANT SAFETY AND INSTALLATION INSTRUCTIONS

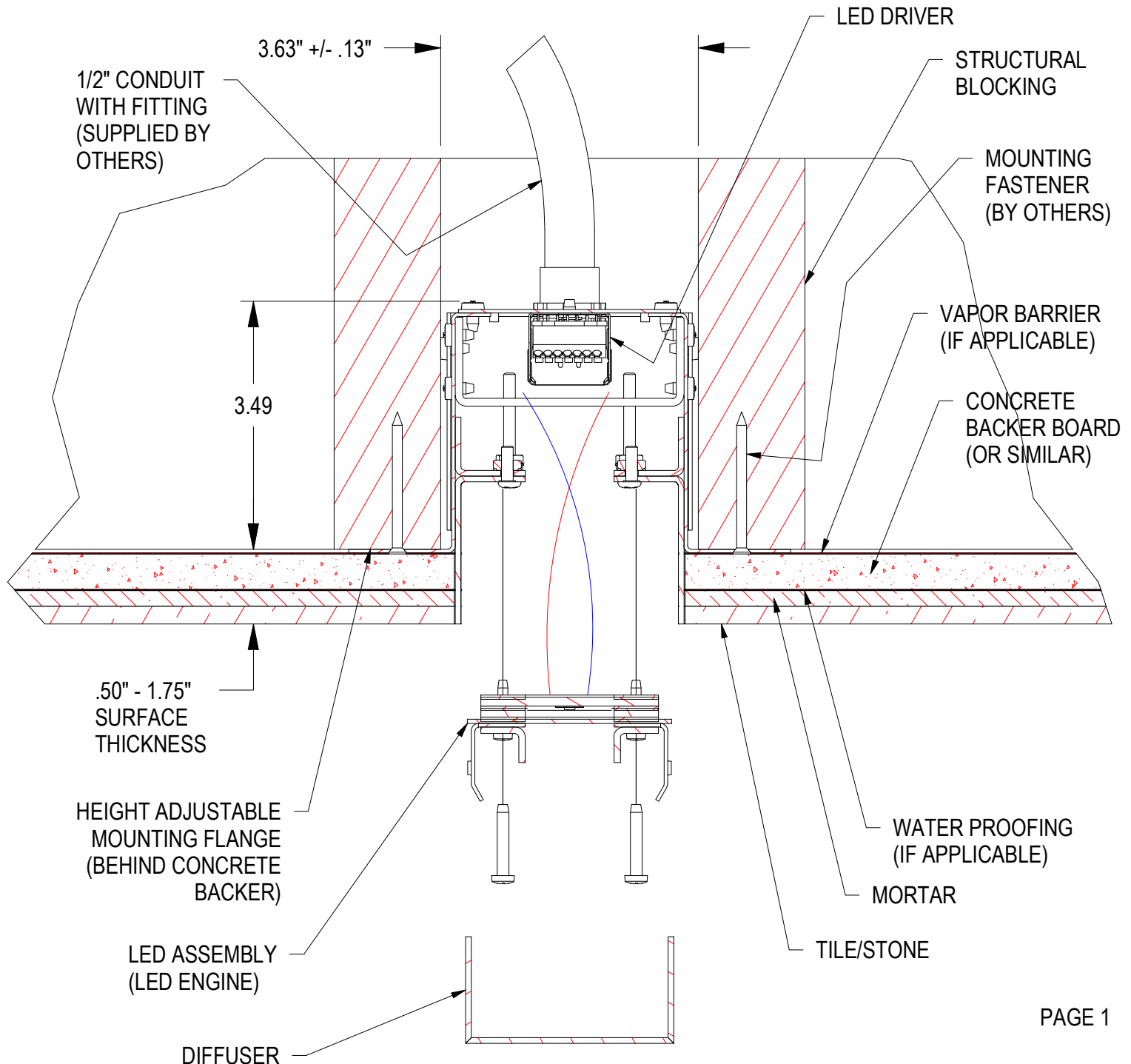
WARNING: Risk of fire and electrical shock. This product is to be installed by a qualified electrician only.

CAUTION: When using electrical equipment, basic safety precautions should always be followed including the following: Read all instructions carefully before installation and save

for future use. Make sure installation and all connections are in accordance with National Electrical Code and any local regulations. To avoid possible electrical shock, be sure that power supply is turned off before installing or servicing this fixture. Servicing should be performed by qualified service personnel.

These instructions do not claim to cover all details or variations. When additional information is desired, please contact your SPI representative.

TILE-IN HOUSING - GENERAL CONSTRUCTION



PAGE 1

03/27/23
IS114729X

IMPORTANT SAFETY AND INSTALLATION INSTRUCTIONS

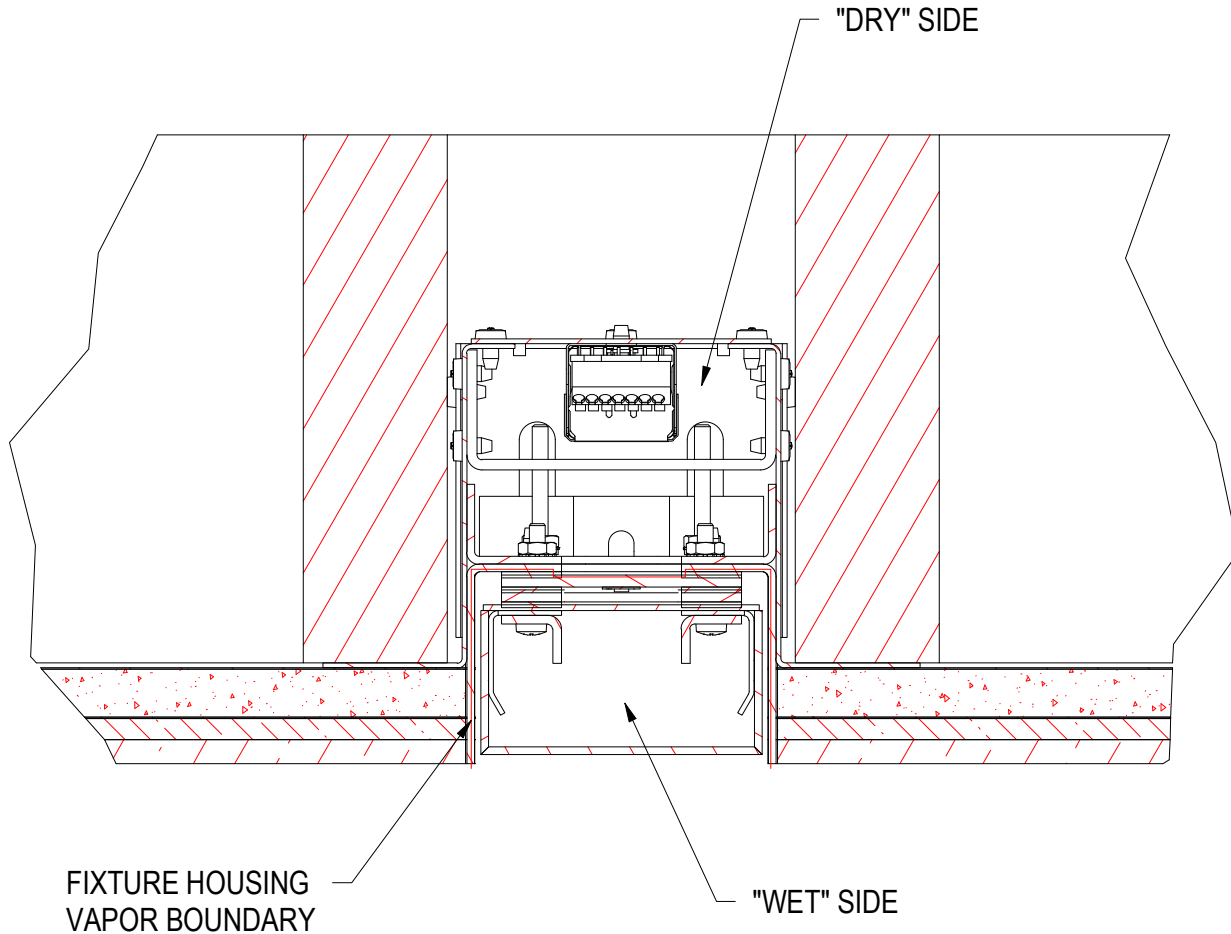
WARNING: Risk of fire and electrical shock. This product is to be installed by a qualified electrician only.

CAUTION: When using electrical equipment, basic safety precautions should always be followed including the following: Read all instructions carefully before installation and save

for future use. Make sure installation and all connections are in accordance with National Electrical Code and any local regulations. To avoid possible electrical shock, be sure that power supply is turned off before installing or servicing this fixture. Servicing should be performed by qualified service personnel.

These instructions do not claim to cover all details or variations. When additional information is desired, please contact your SPI representative.

TILE-IN HOUSING - WALL/CEILING SYSTEM INTEGRATION



VAPOR BARRIER BOUNDARY

To insure building performance integrity, the fixture is to be integrated into any required vapor barrier system. Fixture housing to be sealed to vapor barrier system with methods recommended by system manufacturer.

PAGE 2

03/27/23
IS114729X

IMPORTANT SAFETY AND INSTALLATION INSTRUCTIONS

WARNING: Risk of fire and electrical shock. This product is to be installed by a qualified electrician only.

CAUTION: When using electrical equipment, basic safety precautions should always be followed including the following: Read all instructions carefully before installation and save

for future use. Make sure installation and all connections are in accordance with National Electrical Code and any local regulations. To avoid possible electrical shock, be sure that power supply is turned off before installing or servicing this fixture. Servicing should be performed by qualified service personnel.

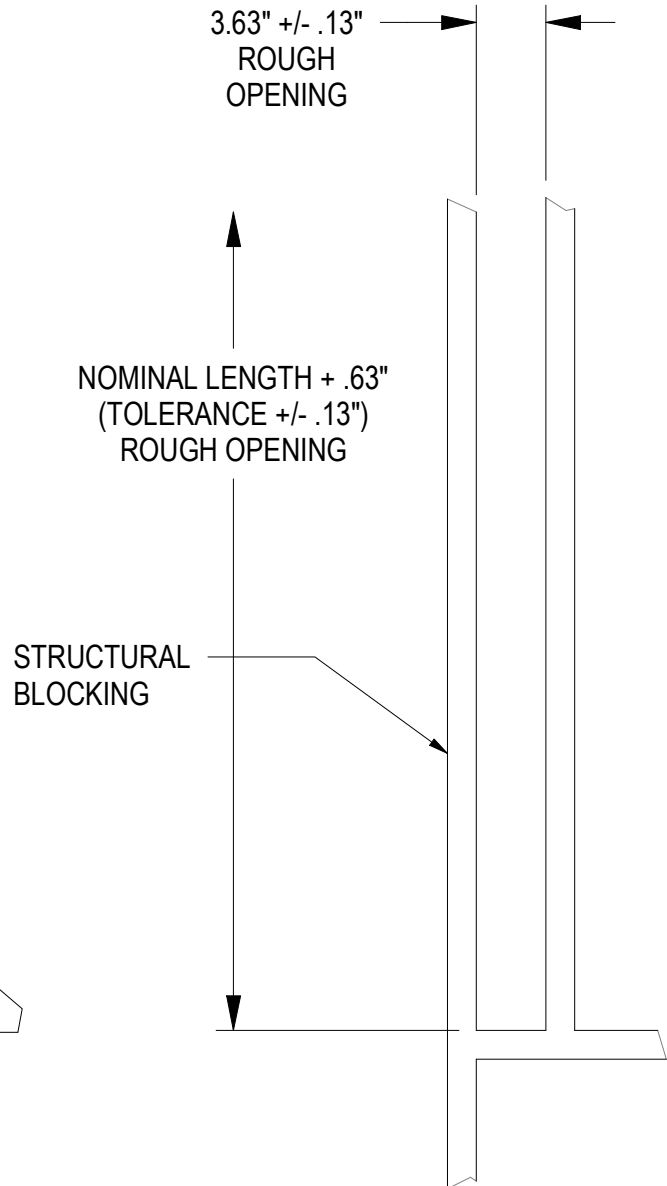
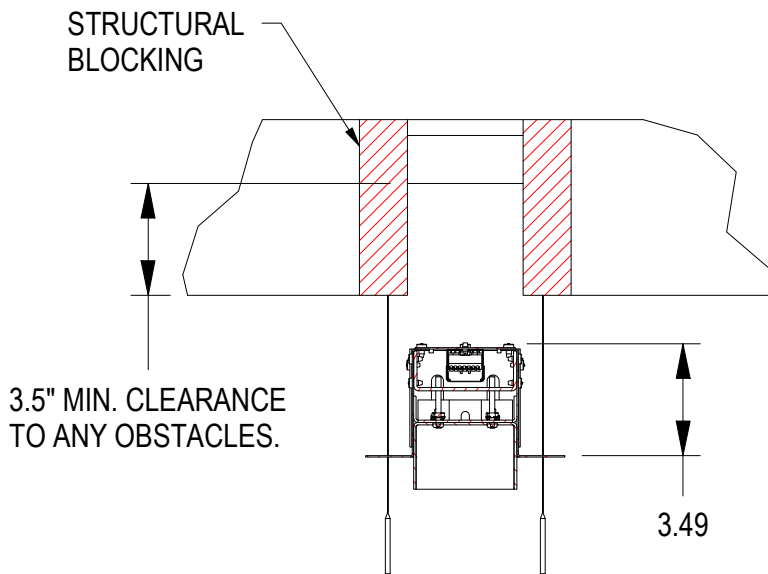
These instructions do not claim to cover all details or variations. When additional information is desired, please contact your SPI representative.

TILE-IN HOUSING - ROUGH IN

CEILING/WALL STRUCTURE

Prepare structural blocking to support recessed fixture to the dimensions shown.

Provide clearance for conduit attachment at any of the knockout locations in run. Knockouts are for 1/2" conduit fittings (.875" diameter.)



ROUGH-IN MOUNTING DETAIL

PAGE 3

03/27/23
IS114729X

IMPORTANT SAFETY AND INSTALLATION INSTRUCTIONS

WARNING: Risk of fire and electrical shock. This product is to be installed by a qualified electrician only.

CAUTION: When using electrical equipment, basic safety precautions should always be followed including the following: Read all instructions carefully before installation and save

for future use. Make sure installation and all connections are in accordance with National Electrical Code and any local regulations. To avoid possible electrical shock, be sure that power supply is turned off before installing or servicing this fixture. Servicing should be performed by qualified service personnel.

These instructions do not claim to cover all details or variations. When additional information is desired, please contact your SPI representative.

TILE-IN HOUSING

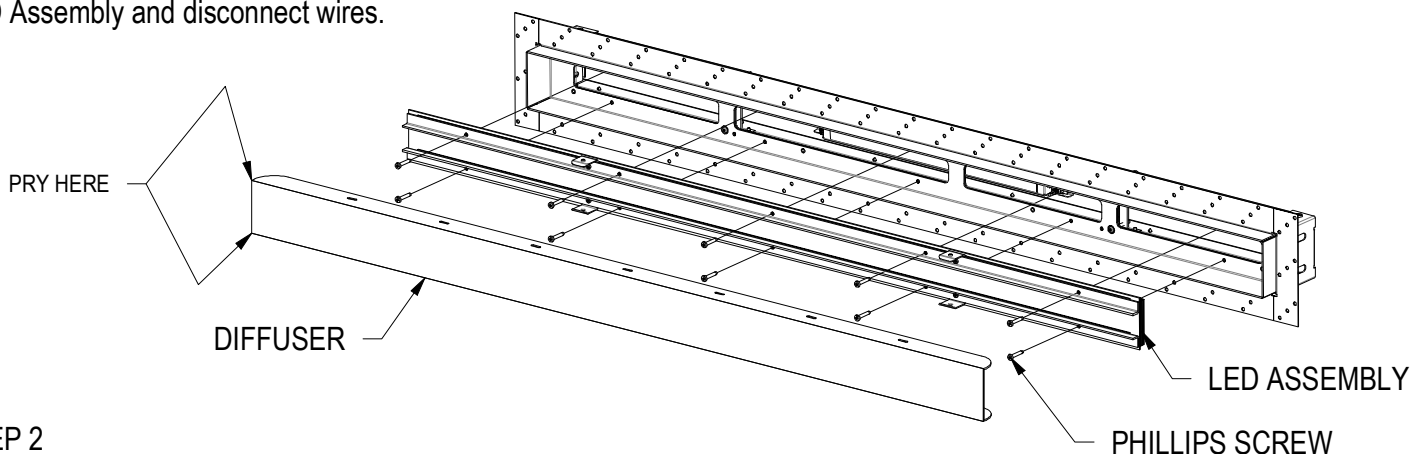
INSTALLATION INSTRUCTIONS

STEP 1

Unpack Fixture to prepare for installation.

Remove acrylic diffuser by carefully prying near the edges of the diffuser at the end. Avoid prying in the center part of the end as this may crack the diffuser.

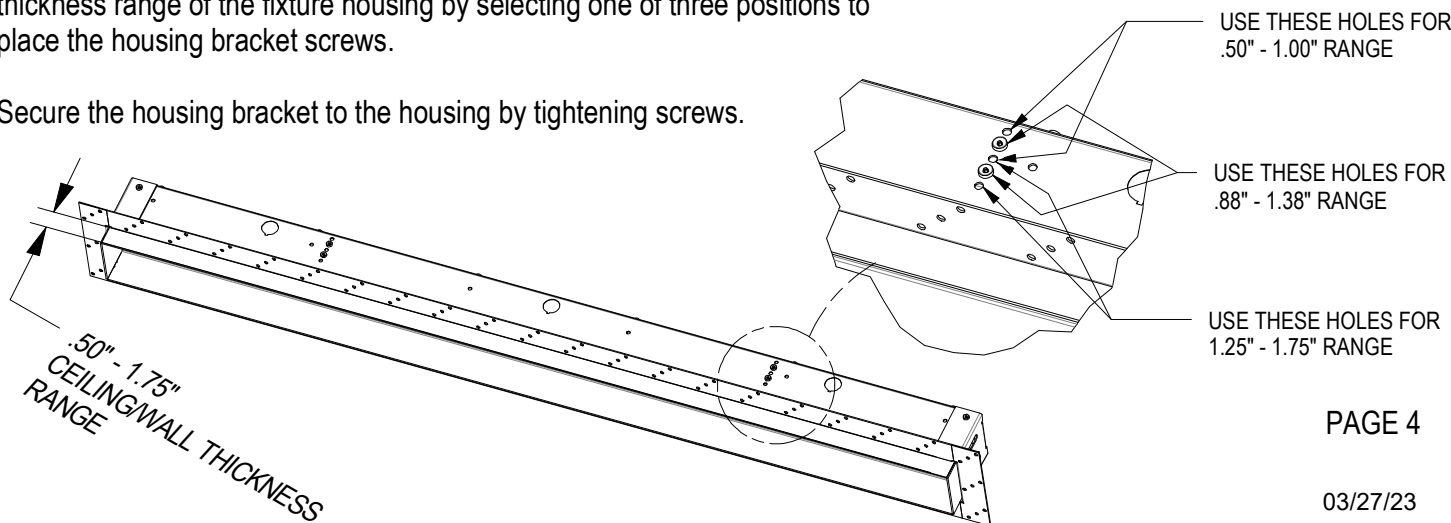
Unthread the Phillips screws holding the LED Assembly to the housing. Lift out LED Assembly and disconnect wires.



STEP 2

Determine the approximate thickness of the finished ceiling/wall. Set the thickness range of the fixture housing by selecting one of three positions to place the housing bracket screws.

Secure the housing bracket to the housing by tightening screws.



PAGE 4

03/27/23
IS114729X

IMPORTANT SAFETY AND INSTALLATION INSTRUCTIONS

WARNING: Risk of fire and electrical shock. This product is to be installed by a qualified electrician only.

CAUTION: When using electrical equipment, basic safety precautions should always be followed including the following: Read all instructions carefully before installation and save

for future use. Make sure installation and all connections are in accordance with National Electrical Code and any local regulations. To avoid possible electrical shock, be sure that power supply is turned off before installing or servicing this fixture. Servicing should be performed by qualified service personnel.

These instructions do not claim to cover all details or variations. When additional information is desired, please contact your SPI representative.

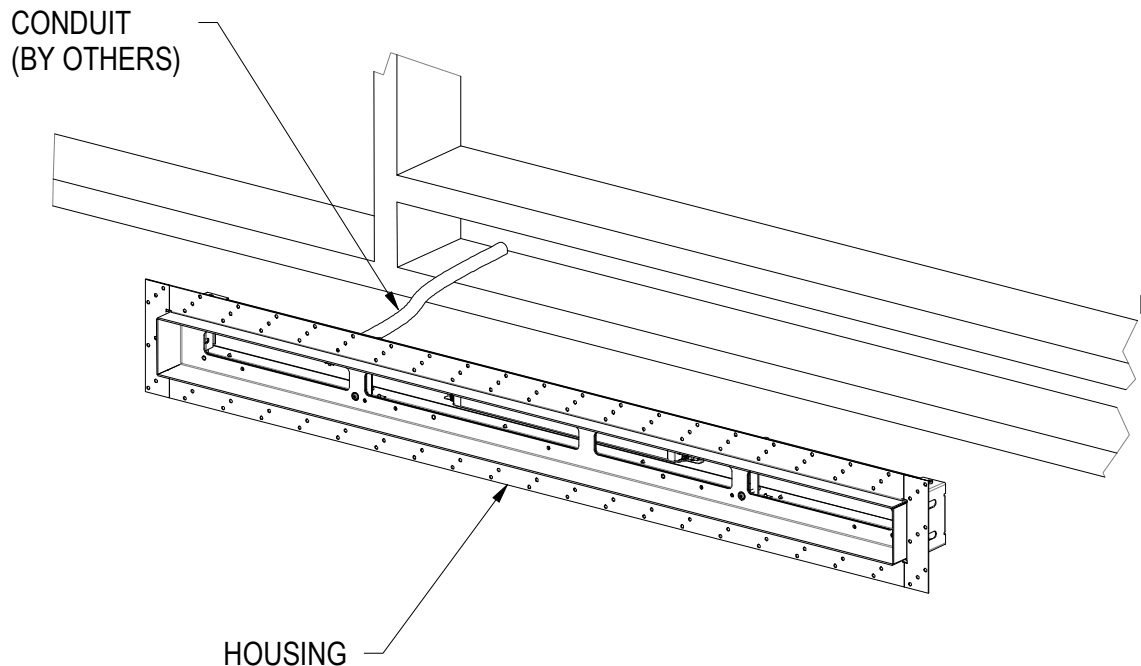
TILE-IN HOUSING

STEP 3

Attach conduit (by others) and conduit fitting (by others) to housing. Use factory knock-outs or punch new hole as needed to clear obstacles. Feed through branch circuit wires (by others.)

If applicable, apply recommended seal between housing and vapor barrier. (This may be a sealing compound, tape, caulk, or other method recommended by the vapor barrier manufacturer.)

Position housing into recessed slot and secure flange to surface with fasteners (by others.)



IMPORTANT SAFETY AND INSTALLATION INSTRUCTIONS

WARNING: Risk of fire and electrical shock. This product is to be installed by a qualified electrician only.

CAUTION: When using electrical equipment, basic safety precautions should always be followed including the following: Read all instructions carefully before installation and save

for future use. Make sure installation and all connections are in accordance with National Electrical Code and any local regulations. To avoid possible electrical shock, be sure that power supply is turned off before installing or servicing this fixture. Servicing should be performed by qualified service personnel.

These instructions do not claim to cover all details or variations. When additional information is desired, please contact your SPI representative.

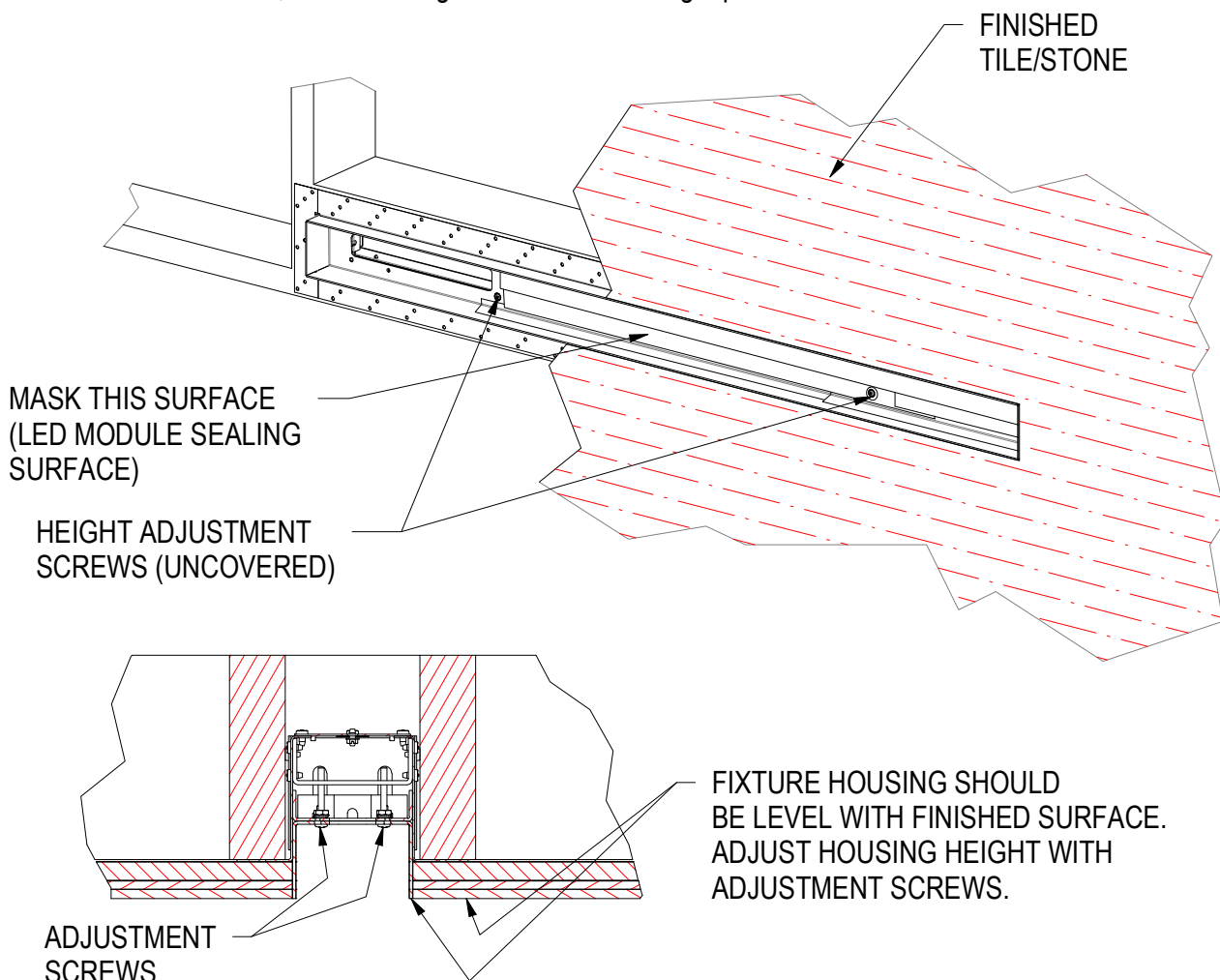
TILE-IN HOUSING

STEP 4

Apply masking tape to inner surface of housing where the LED modules seal to housing. It is acceptable to bring masking up along sides of housing. Uncover fixture height adjustment screws (multiple locations.)

Finish surface over mounting flange. Avoid getting excessive mortar, grout, and/or paint in fixture housing. While building up surface, occasionally check and adjust fixture height to match finished surface height. See HEIGHT ADJUSTMENT DETAIL below.

When surface is finished, clean housing and remove masking tape.



HEIGHT ADJUSTMENT DETAIL

IMPORTANT SAFETY AND INSTALLATION INSTRUCTIONS

WARNING: Risk of fire and electrical shock. This product is to be installed by a qualified electrician only.

CAUTION: When using electrical equipment, basic safety precautions should always be followed including the following: Read all instructions carefully before installation and save

for future use. Make sure installation and all connections are in accordance with National Electrical Code and any local regulations. To avoid possible electrical shock, be sure that power supply is turned off before installing or servicing this fixture. Servicing should be performed by qualified service personnel.

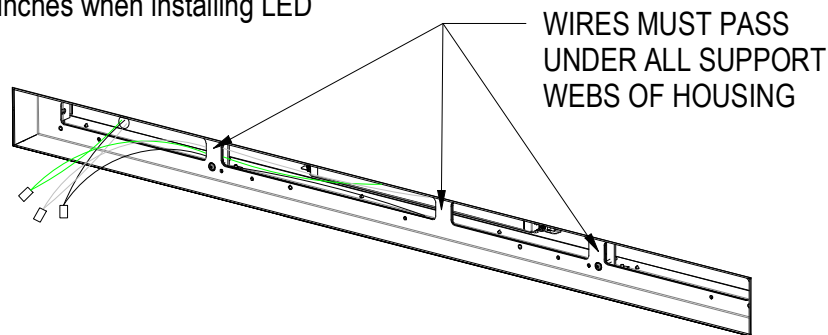
These instructions do not claim to cover all details or variations. When additional information is desired, please contact your SPI representative.

TILE-IN HOUSING

STEP 5

Complete wiring from branch circuit to line voltage and dimming circuits within housing. Cap any unconnected line voltage wires and any unused dimming leads.

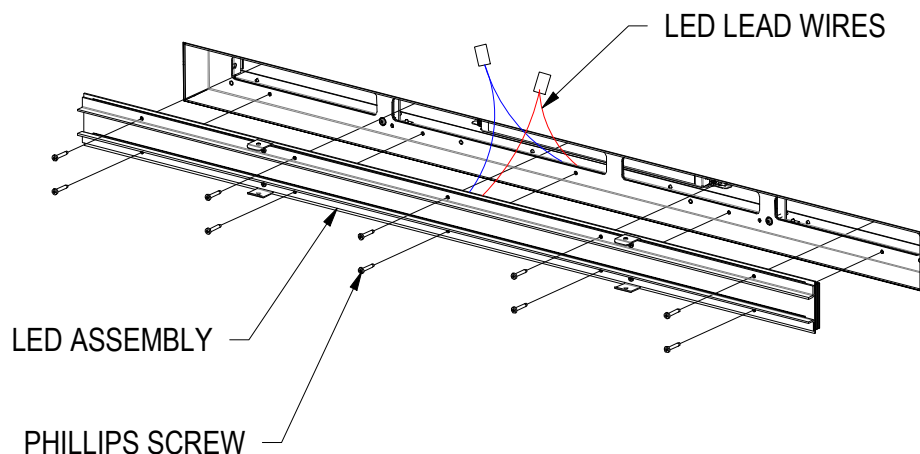
Neatly bundle wiring to prevent pinches when installing LED Assembly.



STEP 6

Connect LED lead wires to LED driver. Place LED Assembly within Housing, being careful not to pinch and wires.

Double check for any pinch wires then secure LED Assembly to Housing with phillips screws.



IMPORTANT SAFETY AND INSTALLATION INSTRUCTIONS

WARNING: Risk of fire and electrical shock. This product is to be installed by a qualified electrician only.

CAUTION: When using electrical equipment, basic safety precautions should always be followed including the following: Read all instructions carefully before installation and save

for future use. Make sure installation and all connections are in accordance with National Electrical Code and any local regulations. To avoid possible electrical shock, be sure that power supply is turned off before installing or servicing this fixture. Servicing should be performed by qualified service personnel.

These instructions do not claim to cover all details or variations. When additional information is desired, please contact your SPI representative.

TILE-IN HOUSING

STEP 7

Test fixture operation.

Install Diffuser by placing legs of the Diffuser between the housing wall and the retaining bracket. Carefully press Diffuser into housing until it bottoms.

NOTE: The retaining brackets go to the inside of the diffuser. Make sure no retaining brackets are visible on the outside of the diffuser.

