

# ANSI/IES TM-30-20 Color Rendition Report

Unique Identifier:

Manufacturer:

Creation Date:

Catalog Number or Model:

2700K FROSTED CLEAR LENS

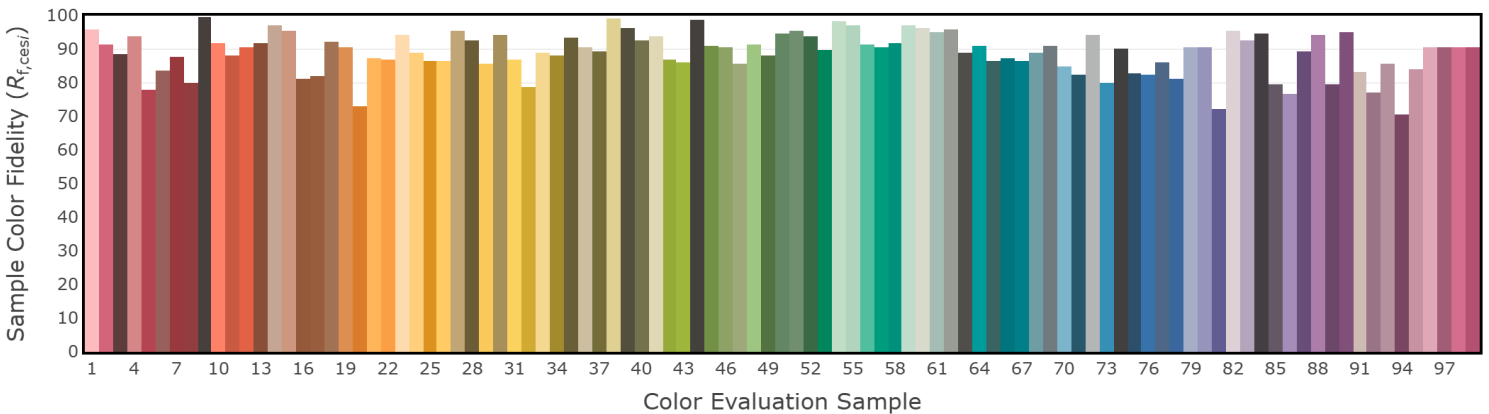
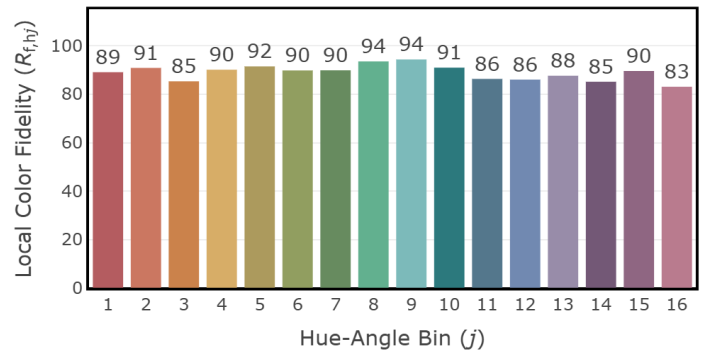
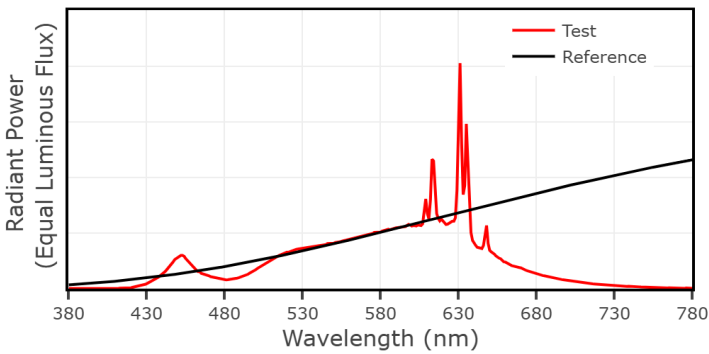
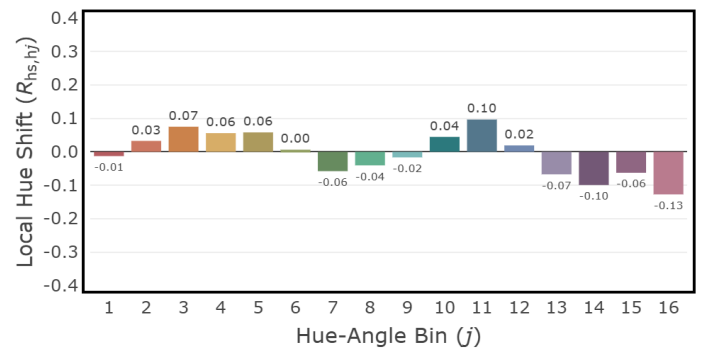
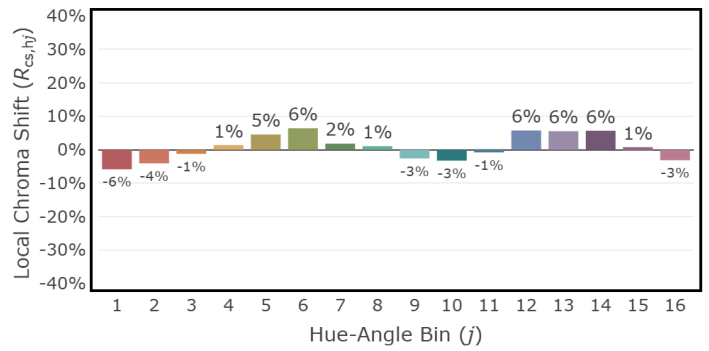
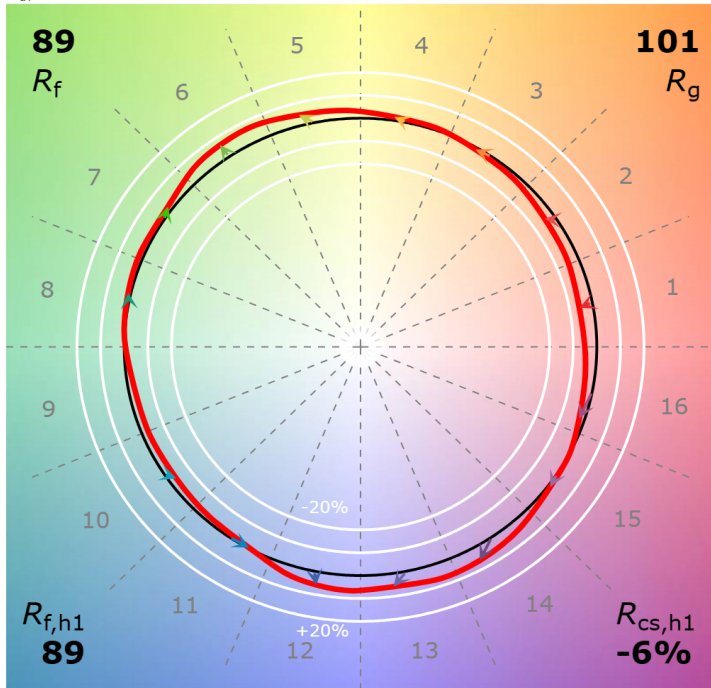
SPI LIGHTING

5/6/2025

2700K FROSTED CLEAR LENS

CCT: 2756 K  
 $D_{uv}$ : 0.0004

P2 V- F3



The content of this report was generated by the Illuminating Engineering Society's online spectral calculator ([www.ies.org/spectralcalculator](http://www.ies.org/spectralcalculator)), in conformance with the ANSI/IES TM-30-20 standard published by the IES, 120 Wall Street, New York, New York 10005.