

ANSI/IES TM-30-20 Color Rendition Report

Unique Identifier:

Manufacturer:

Creation Date:

Catalog Number or Model:

3000K TEXTURED OPAL LENS

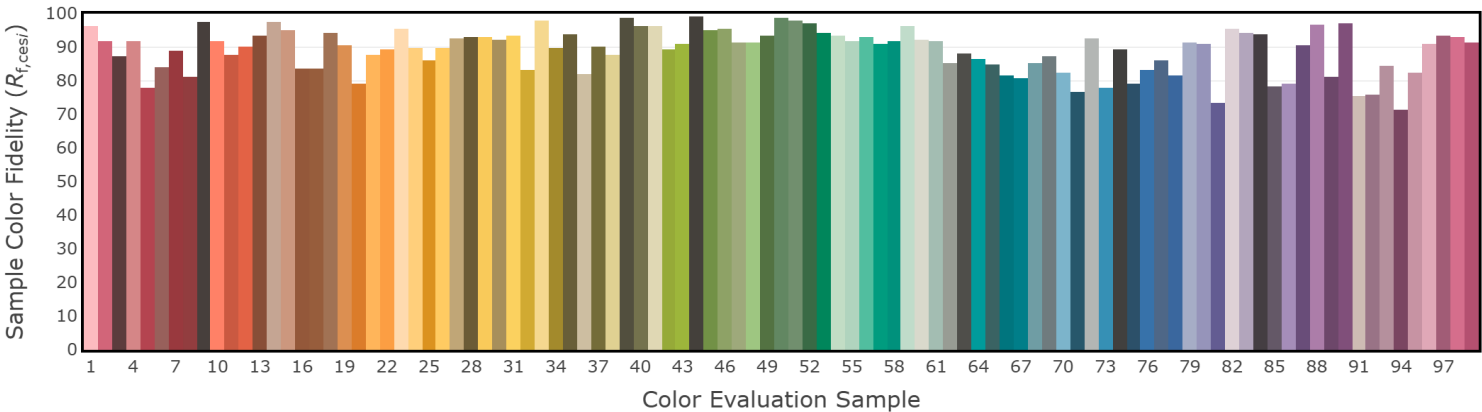
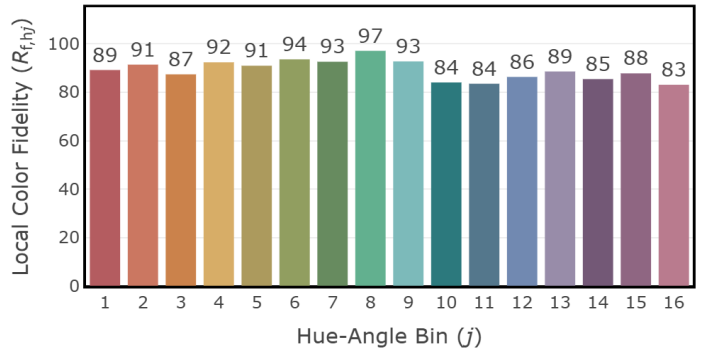
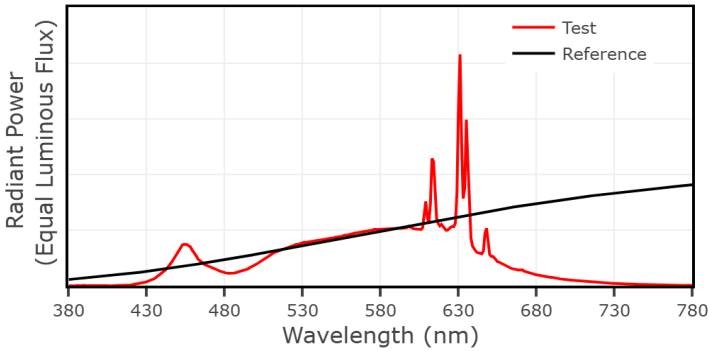
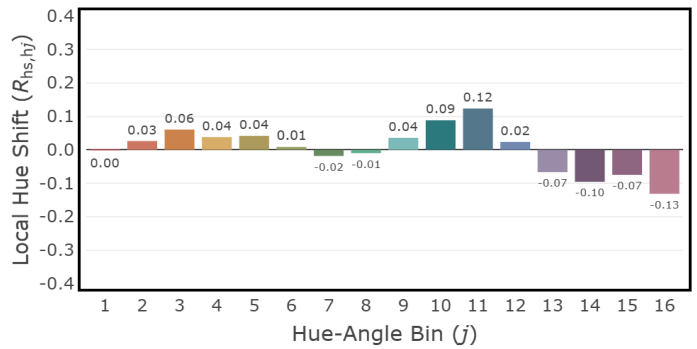
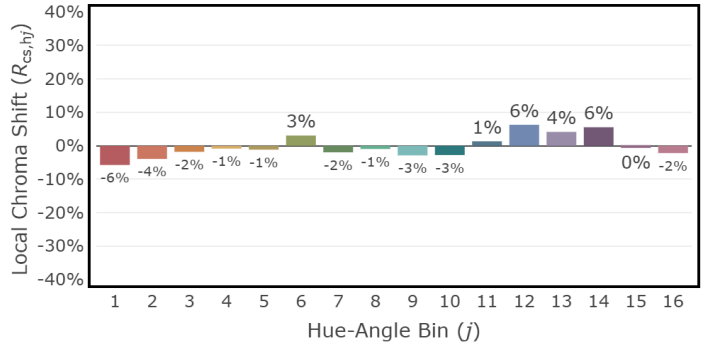
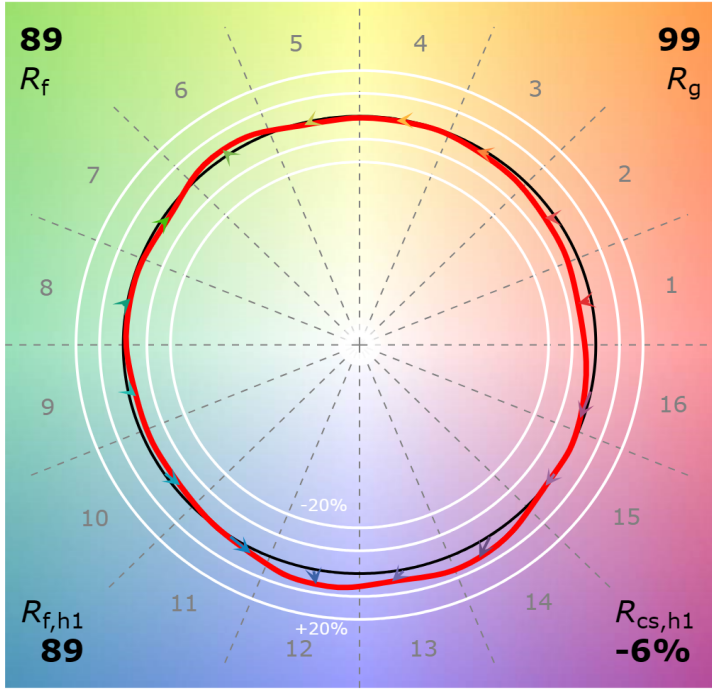
SPI LIGHTING

5/6/2025

3000K TEXTURED OPAL LENS

CCT: 3052 K
 D_{uv} : 0.0012

P2 V- F3



The content of this report was generated by the Illuminating Engineering Society's online spectral calculator (www.ies.org/spectralcalculator), in conformance with the ANSI/IES TM-30-20 standard published by the IES, 120 Wall Street, New York, New York 10005.