

ANSI/IES TM-30-20 Color Rendition Report

Unique Identifier:

2700K TEXTURED OPAL LENS

Manufacturer:

SPI LIGHTING

Creation Date:

5/6/2025

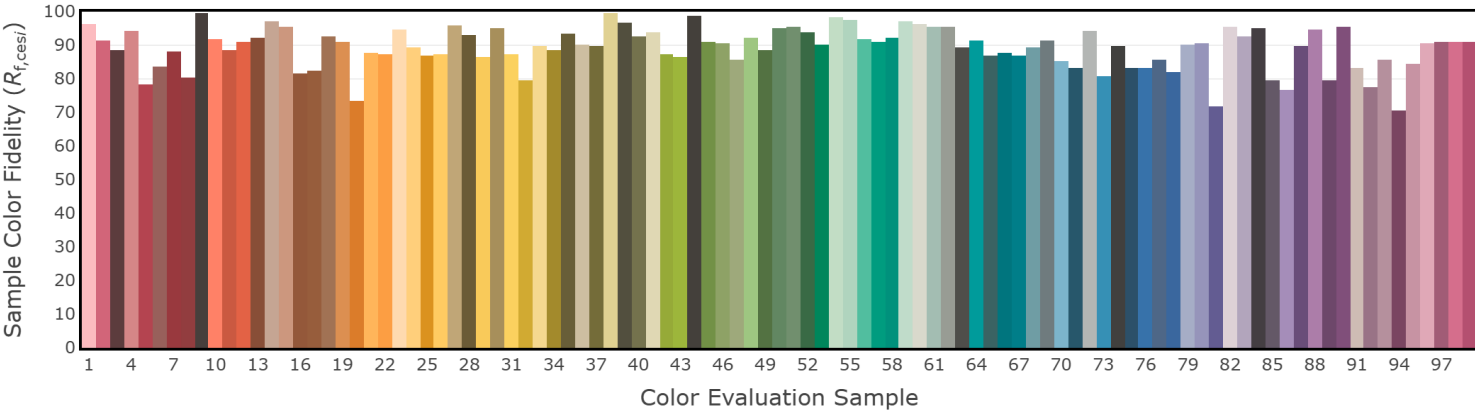
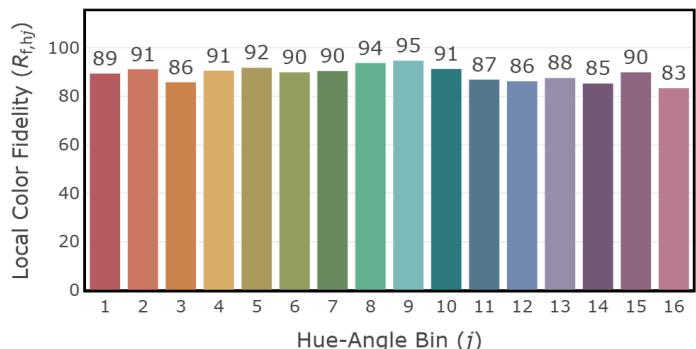
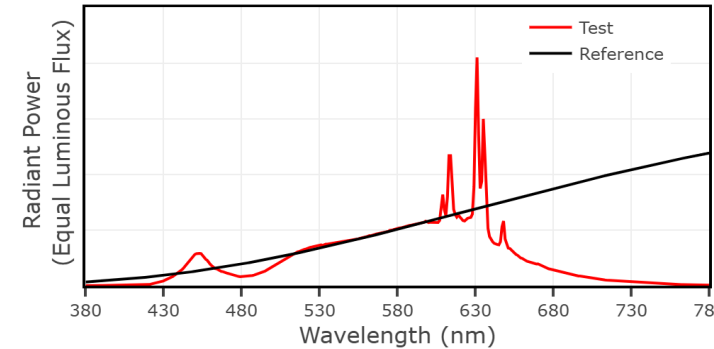
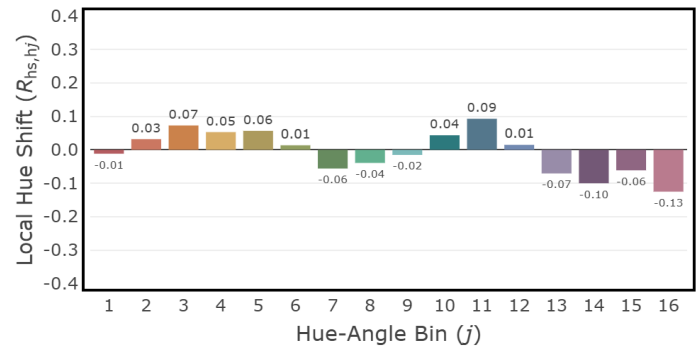
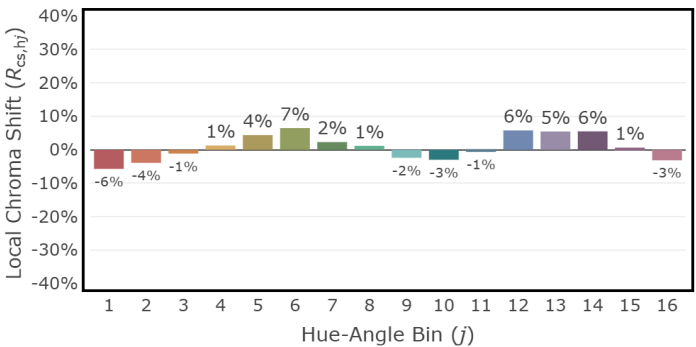
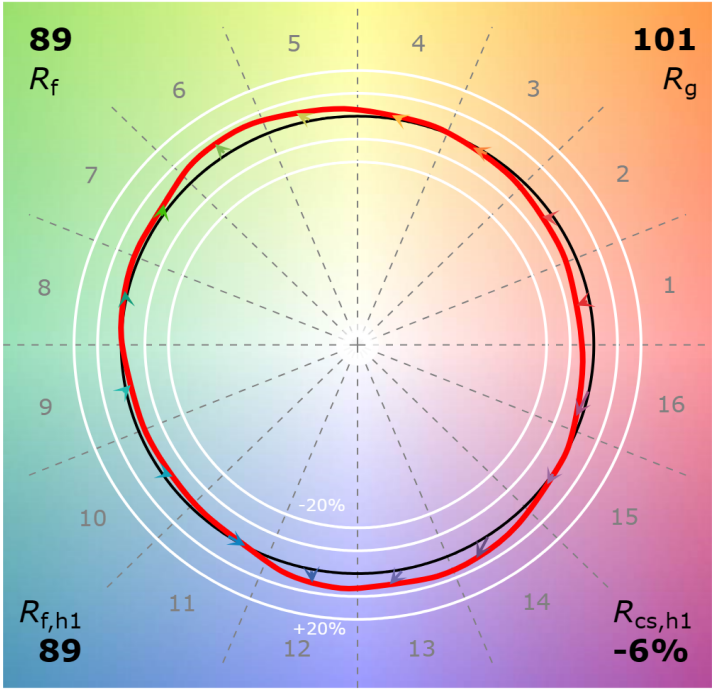
Catalog Number or Model:

2700K TEXTURED OPAL LENS

CCT: 2725 K

D_{uv} : 0.0003

P2 V- F3



The content of this report was generated by the Illuminating Engineering Society's online spectral calculator (www.ies.org/spectralcalculator), in conformance with the ANSI/IES TM-30-20 standard published by the IES, 120 Wall Street, New York, New York 10005.