

IMPORTANT SAFETY AND INSTALLATION INSTRUCTIONS

WARNING: Risk of fire and electrical shock. This product is to be installed by a qualified electrician only.

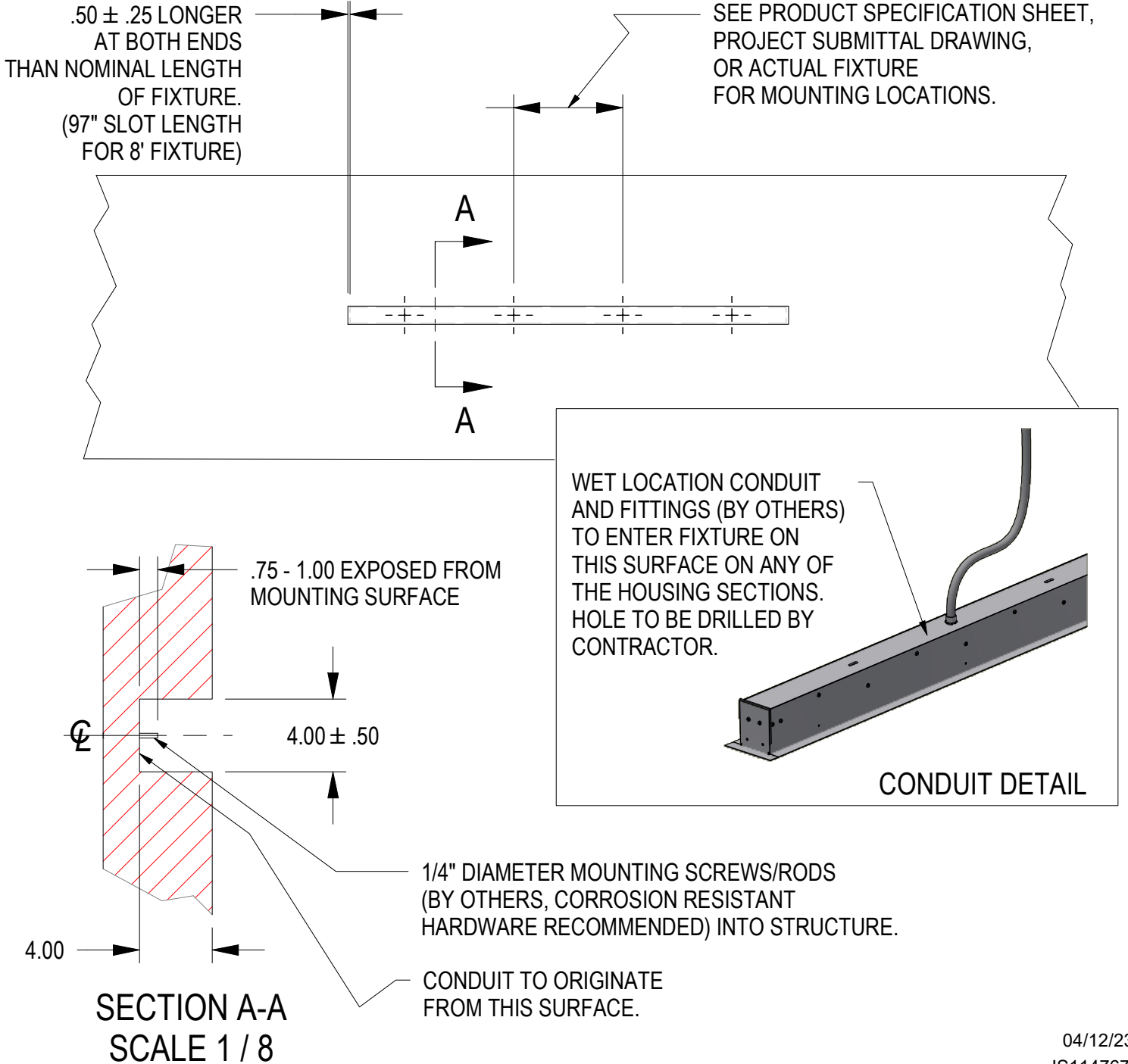
CAUTION: When using electrical equipment, basic safety precautions should always be followed including the following: Read all instructions carefully before installation and save

for future use. Make sure installation and all connections are in accordance with National Electrical Code and any local regulations. To avoid possible electrical shock, be sure that the power supply is turned off before installing or servicing this fixture. Servicing should be performed by qualified service personnel.

These instructions do not claim to cover all details or variations. When additional information is desired, please contact your SPI representative.

RECESSED LINEAR - EXTERIOR

RECESSED SLOT DIMENSIONS



04/12/23
IS114767X

IMPORTANT SAFETY AND INSTALLATION INSTRUCTIONS

WARNING: Risk of fire and electrical shock. This product is to be installed by a qualified electrician only.

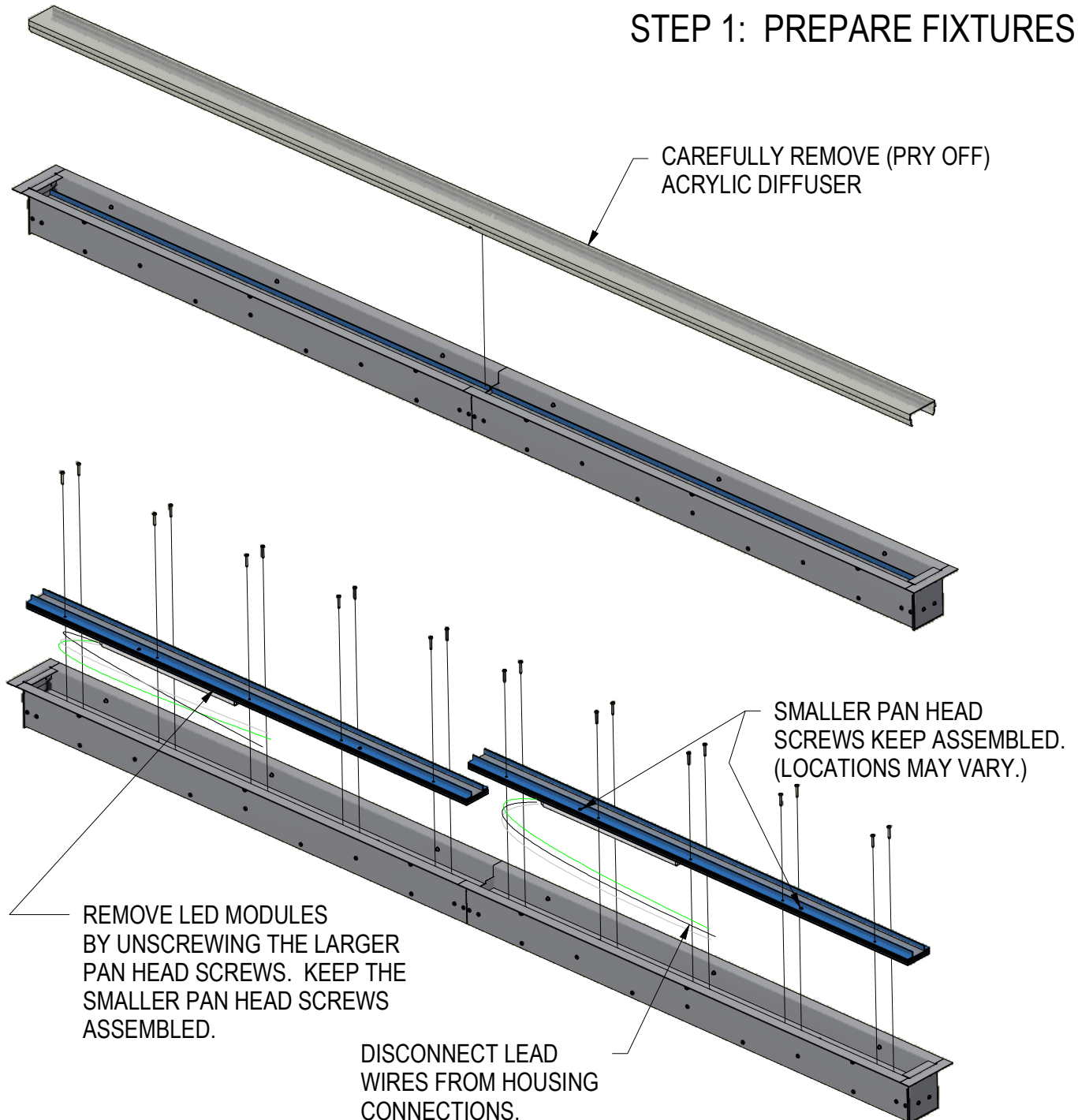
CAUTION: When using electrical equipment, basic safety precautions should always be followed including the following: Read all instructions carefully before installation and save

for future use. Make sure installation and all connections are in accordance with National Electrical Code and any local regulations. To avoid possible electrical shock, be sure that the power supply is turned off before installing or servicing this fixture. Servicing should be performed by qualified service personnel.

These instructions do not claim to cover all details or variations. When additional information is desired, please contact your SPI representative.

RECESSED LINEAR - EXTERIOR

STEP 1: PREPARE FIXTURES



04/12/23
IS114767X

IMPORTANT SAFETY AND INSTALLATION INSTRUCTIONS

WARNING: Risk of fire and electrical shock. This product is to be installed by a qualified electrician only.

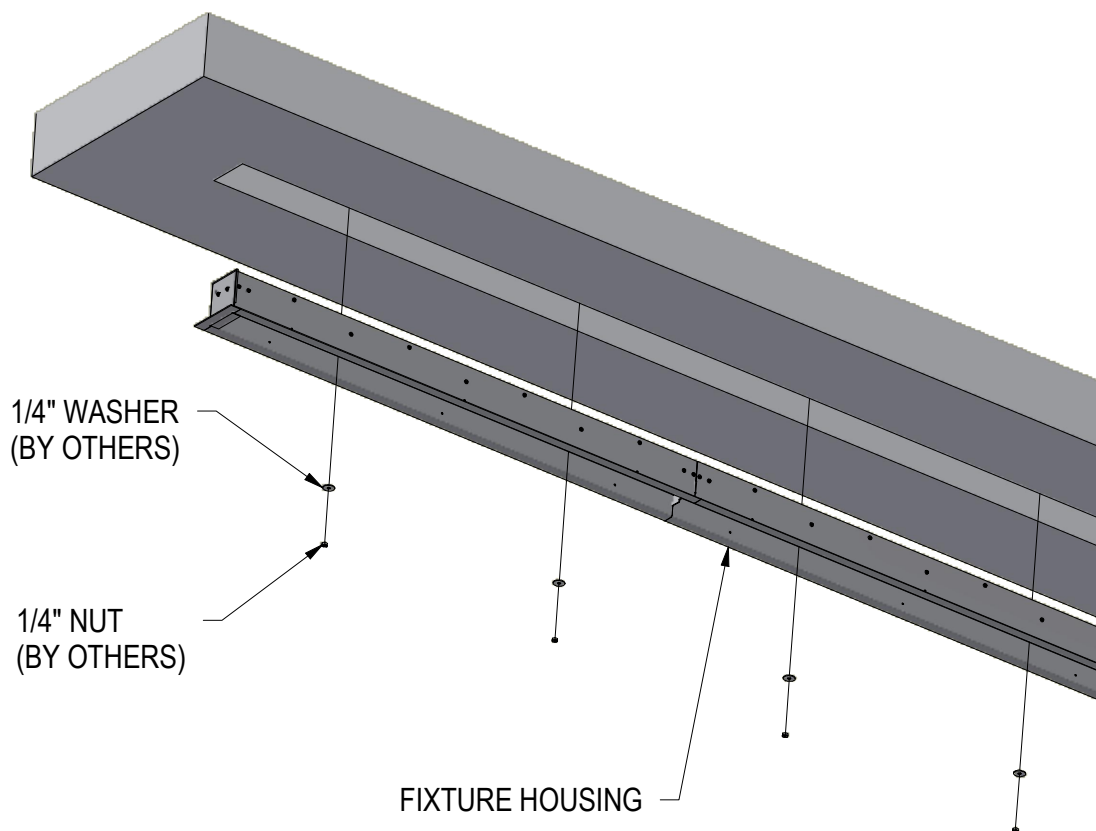
CAUTION: When using electrical equipment, basic safety precautions should always be followed including the following: Read all instructions carefully before installation and save

for future use. Make sure installation and all connections are in accordance with National Electrical Code and any local regulations. To avoid possible electrical shock, be sure that the power supply is turned off before installing or servicing this fixture. Servicing should be performed by qualified service personnel.

These instructions do not claim to cover all details or variations. When additional information is desired, please contact your SPI representative.

RECESSED LINEAR - EXTERIOR

STEP 2: INSTALL START SECTION



****NOTE: DO NOT TIGHTEN UNTIL ALL SECTIONS ARE INSTALLED****

04/12/23
IS114767X

IMPORTANT SAFETY AND INSTALLATION INSTRUCTIONS

WARNING: Risk of fire and electrical shock. This product is to be installed by a qualified electrician only.

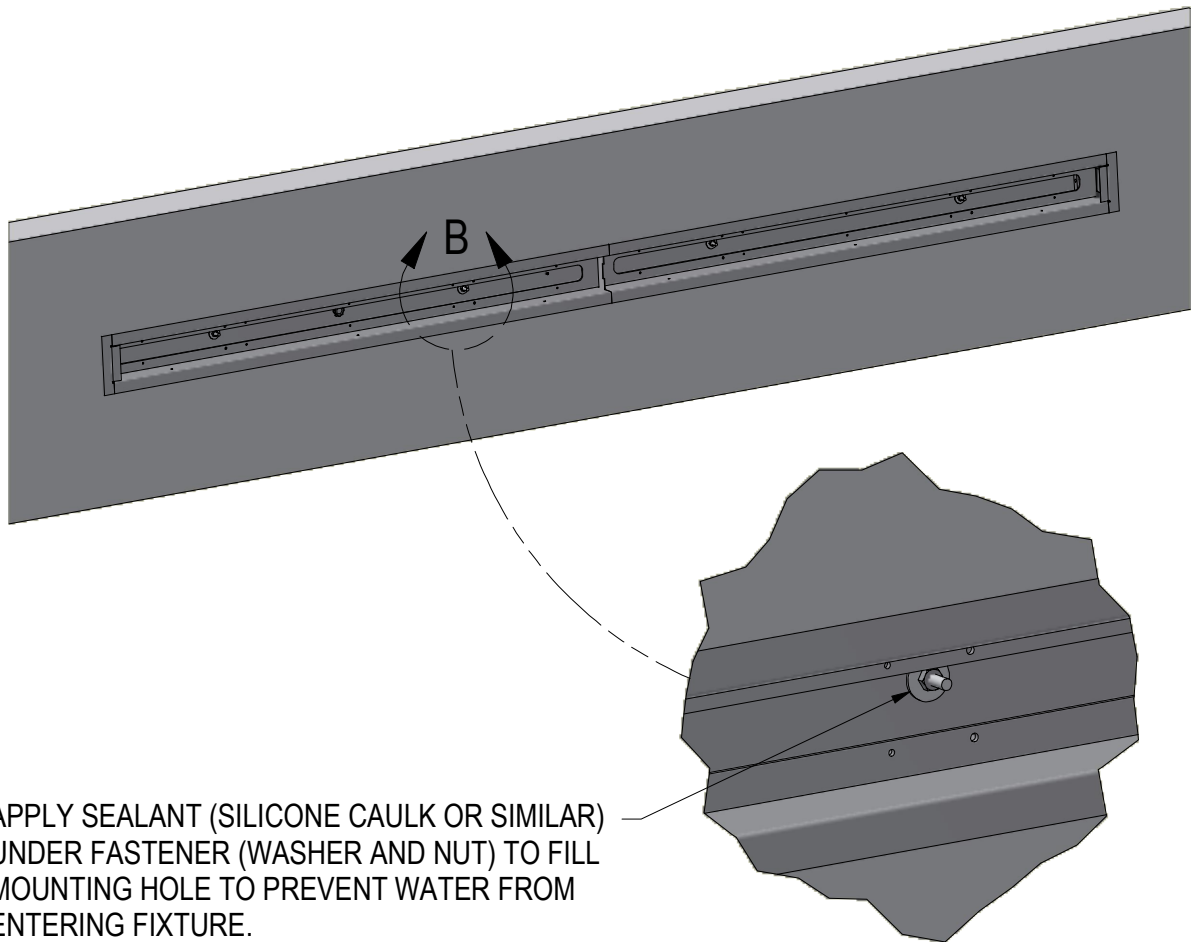
CAUTION: When using electrical equipment, basic safety precautions should always be followed including the following: Read all instructions carefully before installation and save

for future use. Make sure installation and all connections are in accordance with National Electrical Code and any local regulations. To avoid possible electrical shock, be sure that the power supply is turned off before installing or servicing this fixture. Servicing should be performed by qualified service personnel.

These instructions do not claim to cover all details or variations. When additional information is desired, please contact your SPI representative.

RECESSED LINEAR - EXTERIOR

STEP 3: SEAL MOUNTING SLOTS AND TIGHTEN FASTENERS.



APPLY SEALANT (SILICONE CAULK OR SIMILAR) UNDER FASTENER (WASHER AND NUT) TO FILL MOUNTING HOLE TO PREVENT WATER FROM ENTERING FIXTURE.

TIGHTEN FASTENER TO SECURE FIXTURE TO BUILDING.

REPEAT FOR ALL REMAINING MOUNTING LOCATIONS.

DETAIL B
SCALE 1 / 4

04/12/23
IS114767X

IMPORTANT SAFETY AND INSTALLATION INSTRUCTIONS

WARNING: Risk of fire and electrical shock. This product is to be installed by a qualified electrician only.

CAUTION: When using electrical equipment, basic safety precautions should always be followed including the following: Read all instructions carefully before installation and save

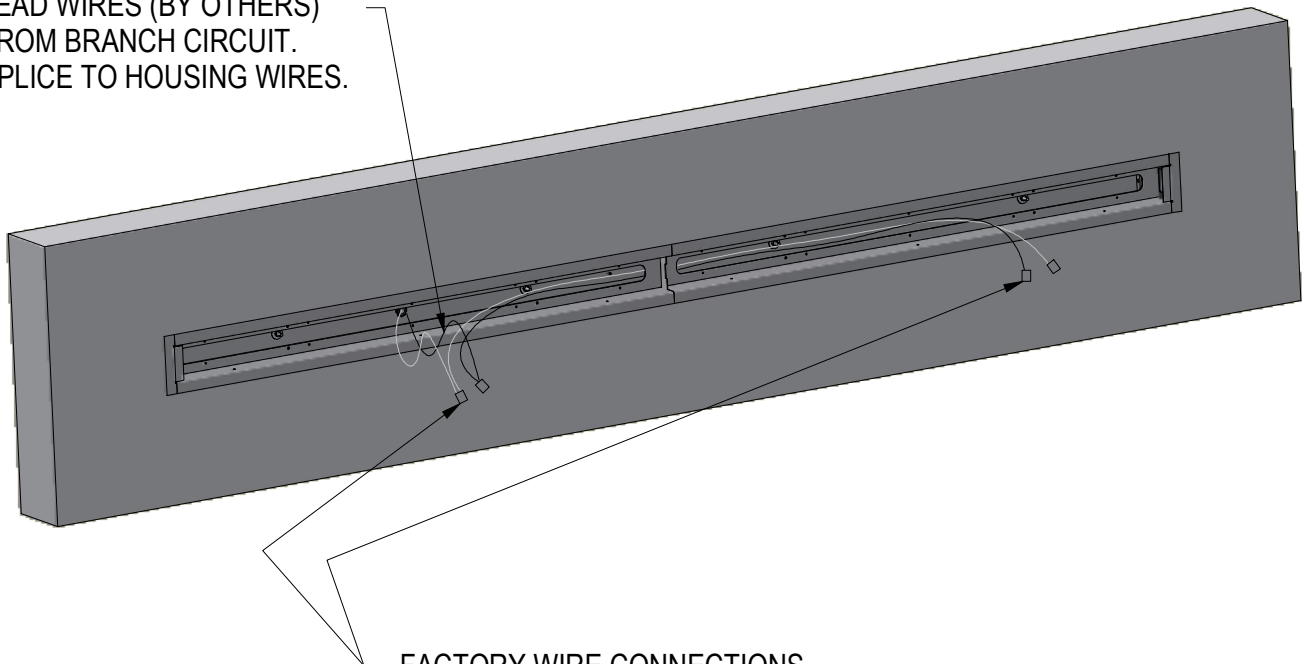
for future use. Make sure installation and all connections are in accordance with National Electrical Code and any local regulations. To avoid possible electrical shock, be sure that the power supply is turned off before installing or servicing this fixture. Servicing should be performed by qualified service personnel.

These instructions do not claim to cover all details or variations. When additional information is desired, please contact your SPI representative.

RECESSED LINEAR - EXTERIOR

STEP 4: COMPLETE HOUSING WIRING

LEAD WIRES (BY OTHERS)
FROM BRANCH CIRCUIT.
SPlice TO HOUSING WIRES.



FACTORY WIRE CONNECTIONS.
USED FOR LED MODULE HOOKUP.

WIRE COLOR KEY

BLACK = HOT (120V-277V)
WHITE = COMMON
GREEN = GROUND

PURPLE = DIMMING (+)
GREY = DIMMING (-)

****NOTE: CAP ALL UNUSED LEAD WIRES.****

04/12/23
IS114767X

IMPORTANT SAFETY AND INSTALLATION INSTRUCTIONS

WARNING: Risk of fire and electrical shock. This product is to be installed by a qualified electrician only.

CAUTION: When using electrical equipment, basic safety precautions should always be followed including the following: Read all instructions carefully before installation and save

for future use. Make sure installation and all connections are in accordance with National Electrical Code and any local regulations. To avoid possible electrical shock, be sure that the power supply is turned off before installing or servicing this fixture. Servicing should be performed by qualified service personnel.

These instructions do not claim to cover all details or variations. When additional information is desired, please contact your SPI representative.

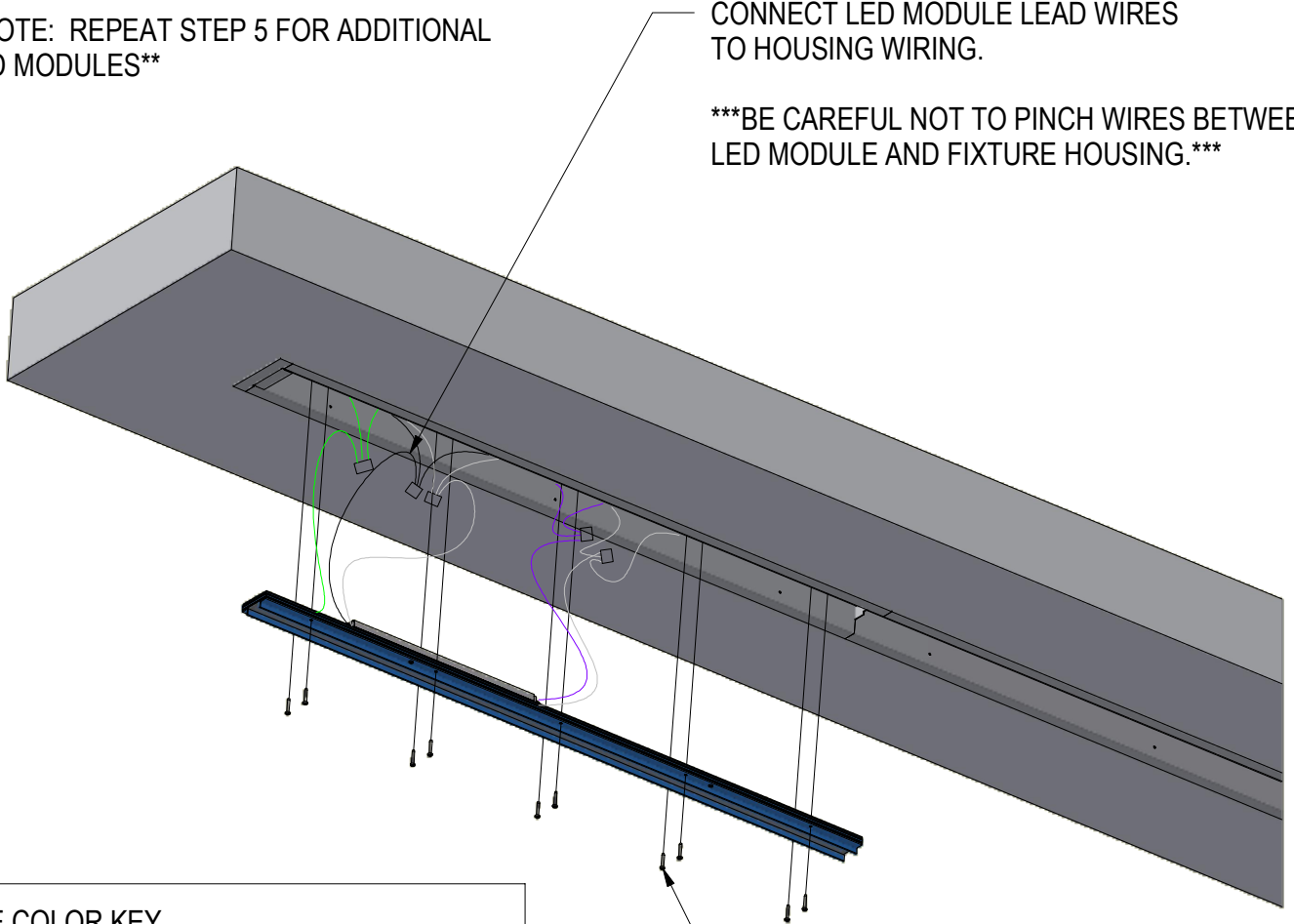
RECESSED LINEAR - EXTERIOR

STEP 5: INSTALL LED MODULES

****NOTE: REPEAT STEP 5 FOR ADDITIONAL LED MODULES****

CONNECT LED MODULE LEAD WIRES TO HOUSING WIRING.

*****BE CAREFUL NOT TO PINCH WIRES BETWEEN LED MODULE AND FIXTURE HOUSING.*****



WIRE COLOR KEY

BLACK = HOT (120V-277V)
WHITE = COMMON
GREEN = GROUND

PURPLE = DIMMING (+)
GREY = DIMMING (-)

****NOTE: CAP ALL UNUSED LEAD WIRES.****

TIGHTEN ALL MOUNTING SCREWS TO COMPRESS GASKETING.

04/12/23
IS114767X

IMPORTANT SAFETY AND INSTALLATION INSTRUCTIONS

WARNING: Risk of fire and electrical shock. This product is to be installed by a qualified electrician only.

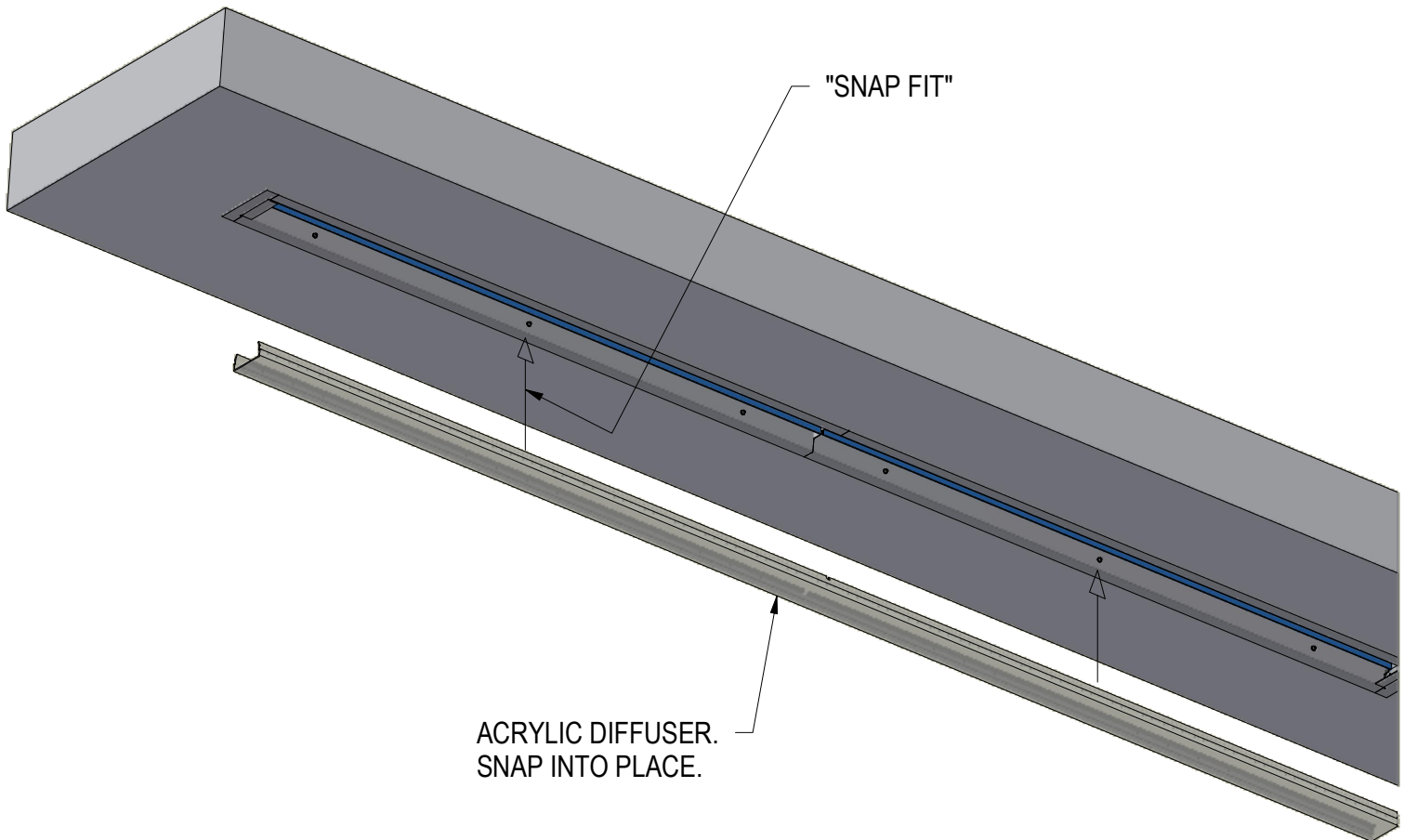
CAUTION: When using electrical equipment, basic safety precautions should always be followed including the following: Read all instructions carefully before installation and save

for future use. Make sure installation and all connections are in accordance with National Electrical Code and any local regulations. To avoid possible electrical shock, be sure that the power supply is turned off before installing or servicing this fixture. Servicing should be performed by qualified service personnel.

These instructions do not claim to cover all details or variations. When additional information is desired, please contact your SPI representative.

RECESSED LINEAR - EXTERIOR

STEP 6: INSTALL DIFFUSER



04/12/23
IS114767X