

# Zynn 3" Lines - Shower / Steam

AES12383 3.00 in | Mud-in

JOB NAME:

TYPE:

NOTES:

## DESCRIPTION

This high-temperature, IP66-rated recessed linear fixture is specially designed for steam rooms and natatoriums. It has an LED light engine that is built to withstand the extreme heat and prolonged moisture exposure in these environments. The housing integrates with the vapor barrier, providing a waterproof seal between the fixture and the surface. Available in 2' to 8' standard lengths and continuous runs.

## FEATURES & BENEFITS

- Very high max ambient room temperature rating of 50°C (122°F)
- Up to 700 lm/foot delivered
- Mount it vertically or horizontally on ceilings and walls
- Wide 3" aperture softly diffuses light
- Uniform illumination with no visible shadowing or view of diodes
- Recessed mounting is ideal for small spaces
- Trimless housing
- No visible fasteners give the fixture a clean look
- Dead front with no conductivity
- Acrylic diffuser resists yellowing
- Ideal for emergency lighting with remote power supply
- Light engine and electronics are fully accessible after installation and designed for easy serviceability
- Mount individually or create continuous lines of light
- Handcrafted in USA, BABA Compliant



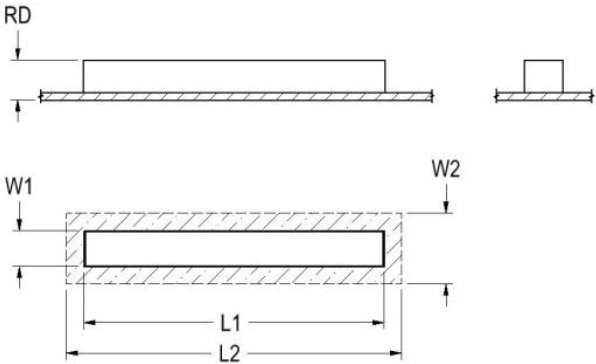
## SPECIFICATIONS

- **LIGHT SOURCE:** White LED light engine
- **INGRESS PROTECTION:** IP66
- **LUMEN MAINTENANCE:** L70 = >50,000 Hrs.
- **EFFICACY:** 50 lm/W delivered
- **CCT:** 3000K, 3500K, or 4000K
- **VOLTAGE:** 120-277V standard
- **DRIVER:** Integral Class 2 power supply
- **DIMMING:** 0-10V controls standard to 1% on LED light engines
- **CONTROLS:** Contact factory for control options (e.g., Lutron)

Athena, Current NX, nLight, Enlighted, Encelium, Wattstopper, WaveLinx, or Casambi)

- **MAX AMBIENT OPERATING TEMP:** 50°C (122°F)
- **MIN AMBIENT OPERATING TEMP:** -20°C (-4°F)
- **EMERGENCY:** Emergency battery remote optional
- **INTEGRATED SURGE PROTECTION:** LED components are protected against minor surge events
- **DIFFUSER:** Diffused acrylic
- **CONSTRUCTION:** 2', 3', and 4' lengths have a seamless housing and diffuser. 6' and 8' lengths are fabricated in a two-part modular housing and have a seamless diffuser. Housing fabricated from aluminum. Corrosion resistant fasteners.
- **MODIFICATIONS:** Consult factory for all modification requests, including alternate lengths or remote drivers
- **APPROVALS:** ETL listed to UL standards (US & Canada) for use in wet locations. Not rated for Insulation Contact.

DIMENSIONS



2FT	L1	L2	RD	W1	W2
	24 in	27.2 in	3.5 in	3.1 in	6.3 in
	61 cm	69.1 cm	8.9 cm	7.9 cm	16 cm

Mounting Weight:Approximate: 10 lb (5 kg)

3FT	L1	L2	RD	W1	W2
	36 in	39.2 in	3.5 in	3.1 in	6.3 in
	91.4 cm	99.6 cm	8.9 cm	7.9 cm	16 cm

Mounting Weight:Approximate: 15 lb (7 kg)

4FT	L1	L2	RD	W1	W2
	48 in	51.2 in	3.5 in	3.1 in	6.3 in
	121.9 cm	130 cm	8.9 cm	7.9 cm	16 cm

Mounting Weight:Approximate: 15 lb (7 kg)

6FT	L1	L2	RD	W1	W2
	72 in	75.2 in	3.5 in	3.1 in	6.3 in
	182.9 cm	191 cm	8.9 cm	7.9 cm	16 cm

Mounting Weight:Approximate: 25 lb (12 kg)

8FT	L1	L2	RD	W1	W2
	96 in	99.2 in	3.5 in	3.1 in	6.3 in
	243.8 cm	252 cm	8.9 cm	7.9 cm	16 cm

Mounting Weight:Approximate: 30 lb (14 kg)

CONFIGURATOR

To configure your spec sheet online, go to [www.spilighting.com/AES12383](http://www.spilighting.com/AES12383). Not all options are available in all configurations; consult factory for details.

Required Field \*

Catalog	Light Source*	Voltage*	Lamp Options*	CRI*	Mounting*	Linear Run	Options
AES12383							
A	B	C	D	E	F	G	

A - LIGHT SOURCE \*

To ensure color consistency, SPI uses precise bin selection and strict quality processes to maintain a 3-step (MacAdam) SDCM on all white LED lampings. Published LED luminaire wattages are calculated using a typical power supply efficiency of 88%; exact wattages may vary based on application. Alternative wattages available upon request.

2 FOOT NOMINAL FIXTURE

- ☐ **2FT-L14W** | White 14W LED Light Engine | Delivered Lumens: 700
- ☐ **2FT-L28W** | White 28W LED Light Engine | Delivered Lumens: 1,400

3 FOOT NOMINAL FIXTURE

- ☐ **3FT-L21W** | White 21W LED Light Engine | Delivered Lumens: 1,050
- ☐ **3FT-L42W** | White 42W LED Light Engine | Delivered Lumens: 2,100

4 FOOT NOMINAL FIXTURE

- ☐ **4FT-L28W** | White 28W LED Light Engine | Delivered Lumens: 1,400
- ☐ **4FT-L56W** | White 56W LED Light Engine | Delivered Lumens: 2,800

6 FOOT NOMINAL FIXTURE

- ☐ **6FT-L42W** | White 42W LED Light Engine | Delivered Lumens: 2,100
- ☐ **6FT-L84W** | White 84W LED Light Engine | Delivered Lumens: 4,200

8 FOOT NOMINAL FIXTURE

- ☐ **8FT-L56W** | White 56W LED Light Engine | Delivered Lumens: 2,800
- ☐ **8FT-L112W** | White 112W LED Light Engine | Delivered Lumens: 5,600

B - VOLTAGE \*

- ☐ 120-277V | Universal Voltage

C - LAMP OPTIONS \*

Delivered lumens shown are at 4000K CCT; apply multiplier for delivered lumens at other CCT.

- ☐ 2700K | 2700K CCT
- ☐ 3000K <sup>1</sup> | 3000K CCT
- ☐ 3500K <sup>2</sup> | 3500K CCT
- ☐ 4000K | 4000K CCT
- ☐ 5000K | 5000K CCT

<sup>1</sup> Apply .95 multiplier for delivered lumens

<sup>2</sup> Apply .97 multiplier for delivered lumens

D - CRI \*

- ☐ DF\_80 | (default)
- ☐ 90

E - MOUNTING \*

Fits within a 3.5" deep wall/ceiling cavity.

- ☐ DF\_REC | Trimless Recessed Mount with Mud-in Flange (default)

F - LINEAR RUN

Runs have a 1/8" expansion gap between diffusers. The light is continuous.

- ☐ RUN | Continuous Run
- OAL** | Specify Length of Run
- Length:

G - OPTIONS

When the NAT option is selected, you can feel confident that the luminaire specified is designed with high-quality materials that will withstand the corrosive environment of indoor pools. Electrical components are protected from moisture and the fixture has been tested to operate in warm ambient temperatures.

- ☐ NAT | Natatorium Construction
- ☐ F | Fusing