

INACTIVE SPEC SHEET

Lightruss LED - New Construction

LLB12021 48.50 in

SPILIGHTING

PROJECT DETAILS

JOB NAME:

TYPE:

NOTES:

DESCRIPTION

Lightruss is a unified, organized system for indirect lighting that lights large spaces better. Featuring efficacy over 100 lumens per watt and max output topping 80,000 lumens per fixture, it is a top choice for natatoriums, athletic facilities, and other high-ceiling applications. By lowering glare, indirect lighting improves visibility of lifeguards who need a clear view to the bottom of the pool. Spectators and swimmers can see better, too. It also gives designers the cleanest visual package because Lightruss lights from the perimeter and eliminates vertical stems. Tried and tested, this flagship family has more than 1,000 installations. For a complimentary lighting layout, contact our applications team at SPIteam@spilighting.com.

FEATURES & BENEFITS

- IP68 light engines, connectors and fully potted drivers stand up to harsh natatorium environments
- Modular part system allows for ease of maintenance
- System is pre-wired at the factory with time-saving male/female connectors for faster wiring and installation
- Tube structure allows for three separate raceways to give maximum flexibility in circuitry and other wiring
- Precision injection molded optics used for consistent performance from unit to unit
- Standard top lens corrects color-over-angle discoloration, delivering a clean white beam suitable for highly-finished ceilings and walls
- Back cover plate available for applications such as bleachers, cat walks and viewing areas
- Footcandle levels are capable of meeting many HD television requirements
- Optical performance allows for the creation of a fully indirect LED system equal to current 400W and 1000W Metal Halide (MH) Lightruss Systems
- Up to 40% energy savings with an indirect LED system when compared to an indirect Metal Halide (MH) system
- Handcrafted in USA



SPECIFICATIONS

SPILIGHTING

P:262.242.1420 | SPIteam@spilighting.com | Last Revised: 4/19/2024 | Design Rights Reserved | LLB12021 | 1 of 4

- **LIGHT SOURCE:** IP68 white LED light engine
- **CRI:** 80+
- **LUMEN MAINTENANCE:** L70 = >50,000 Hrs.
- **EFFICACY:** up to 105 lm/W delivered
- **CCT:** 4000K
- **DRIVER:** Fully potted integral Class 1 power supply standard
- **MAX AMBIENT OPERATING TEMP:** 34°C (93°F)
- **FINISH:** Choose from 26 standard thermoset polyester powder coat paint colors. RAL®, Pantone®, or custom finishes available upon request.
- **APPROVALS:** ETL listed to UL standards (US & Canada) for use in damp locations; not recommended for exterior applications

DIMENSIONS



W	H	OAH	L
20 in	19.2 in	84 in	48.5 in
50.8 cm	48.8 cm	213.4 cm	123.2 cm

Mounting Weight
Consult Factory.

CONFIGURATOR

To configure your spec sheet online, go to www.spilighting.com/LLB12021. Not all options are available in all configurations; consult factory for details.

Required Field *

Catalog	Light Source*	Primary Finish*	Voltage*	Mounting*	Accessories	Other Than Standard Options
LLB12021						
	A		B	C	D	E

A - LIGHT SOURCE *

To ensure color consistency, SPI uses precise bin selection and strict quality processes to maintain a 3-step (MacAdam) SDCM on all white LED lampings. Published LED luminaire wattages are calculated using a typical power supply efficiency of 88%; exact wattages may vary based on application.

- ☐ **L507W** | White 507W LED Light Engine 4000K
- ☐ **L634W** | White 634W LED Light Engine 4000K
- ☐ **L761W** | White 761W LED Light Engine 4000K

See last page for finish options

B - VOLTAGE *

☐ 120-277V | Universal Voltage

C - MOUNTING *

- ☐ STM | Stem Mount
- ☐ AC | Aircraft Cable

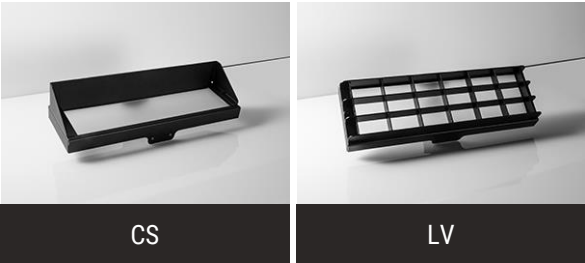
D - ACCESSORIES

Cut-off shield (CS) and louver (LV) options cannot be used together.

- ☐ CS ¹ | Cut-Off Shield
- ☐ LV ² | Louver

¹ Apply .85 multiplier for delivered lumens

² Apply .55 multiplier for delivered lumens



E - OTHER THAN STANDARD OPTIONS

OAH | Pendant suspension length other than standard Length:

Standard Finishes

The colors shown are representative. Their actual appearance may vary due to differences in display settings. You can request color chips by emailing contact@spilighting.com. Please note, finishes may not be available in all configurations.

Paint Colors

PT01 RAL9003 Signal White (Gloss)	PT51 Matte White (Textured)	PT02 White (Textured)	PT04 RAL9001 Cream (Textured)	PT11 Black (Textured)
---	---------------------------------------	---------------------------------	---	---------------------------------

Metallic Paint Colors

PT22 Platinum (Metallic Gloss)	PT48 Brass (Metallic Textured)	PT28 Dark Stainless (Metallic Gloss)	PT49 Bronze (Metallic Textured)	PT32 Dark Bronze (Metallic Gloss)
PT46 Aluminum (Metallic Textured)				

Specialty Finishes



More RAL®, Pantone®, and custom finishes are available upon request. Setup fee and additional lead time applies. Call factory for details.