

# INACTIVE SPEC SHEET

## Lightruss Rail

LRU12075 12.00 in

JOB NAME:

TYPE:

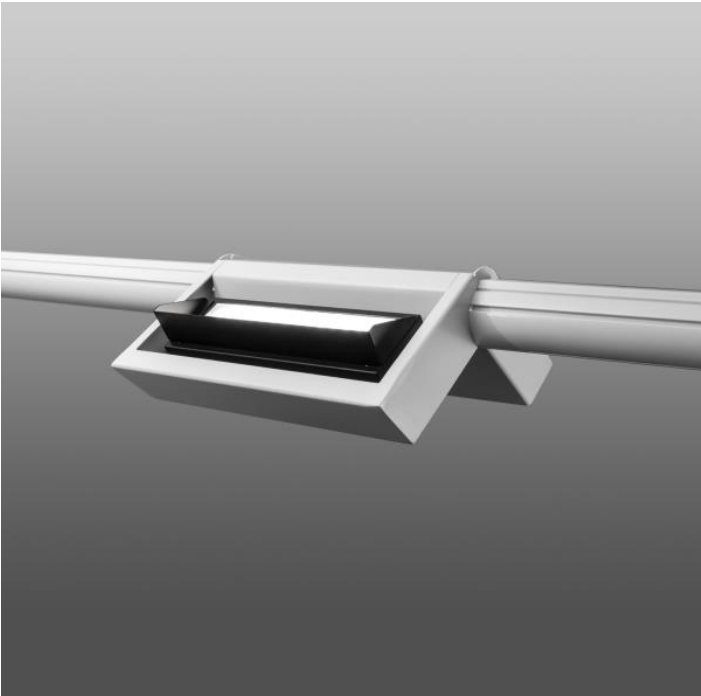
NOTES:

### DESCRIPTION

At just 2.5 inches deep, Lightruss Rail is the most compact product in the revolutionary Lightruss family. Designed with integrated LED modules, it brightly illuminates large spaces powerfully and efficiently. Mounted on a single rail, the system's streamlined design blends seamlessly with ceiling construction. Hinged housings clamp over the rail and are self-supporting without tools, simplifying installation and maintenance. It's an elegant way to safely light natatoriums or other high ceiling applications. For a complimentary lighting layout, contact our applications team at [SPIteam@spilighting.com](mailto:SPIteam@spilighting.com).

### FEATURES & BENEFITS

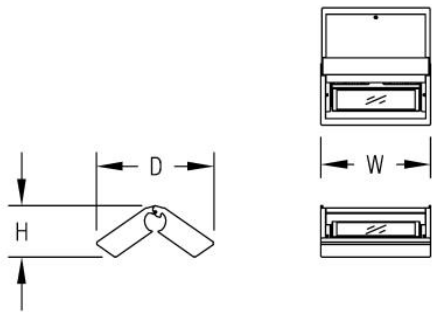
- Create a contemporary look with this low profile, single rail design
- Present a clean visual package by encapsulating wireways and eliminating vertical stems
- Lessen glare on surfaces, increase visual comfort and improve light uniformity with indirect lighting
- Ideally constructed for natatorium environments
- Eliminate fixtures over pools
- Save 25 to 30 percent on installation costs by reducing the number of power drops
- Gain freedom and flexibility for ideal positioning of luminaires regardless of ceiling impediments such as supports, HVAC and other systems
- Access and remove lighting modules without disassembling the entire system
- Choose from visually-matching indirect and direct lighting luminaires
- Rail system can be modified to turn corners and change elevations
- Standard top lens corrects color-over-angle discoloration, delivering a clean white beam suitable for highly-finished ceilings and walls
- Handcrafted in USA



### SPECIFICATIONS

- **LIGHT SOURCE:** IP68 white LED light engine and electrical connectors
- **CRI:** 80+
- **LUMEN MAINTENANCE:** L70 = >50,000 Hrs.
- **EFFICACY:** 96 lm/W delivered
- **CCT:** 3500K or 4000K
- **VOLTAGE:** 120-277V standard
- **DRIVER:** Fully potted integral Class 1 power supply standard
- **MAX AMBIENT OPERATING TEMP:** 34°C (93°F)
- **DIMMING:** 0-10V controls standard to 10% on LED light engines
- **CONTROLS:** Contact factory for control options (e.g., Lutron Athena, Current NX, nLight, Enlighted, Encelium, Wattstopper, WaveLinx, or Casambi).
- **INTEGRATED SURGE PROTECTION:** LED components are protected against minor surge events
- **CONSTRUCTION:** Aluminum housing; precision injection molded optics
- **FINISH:** Choose from 26 standard thermoset polyester powder coat paint colors. RAL®, Pantone®, or custom finishes available upon request.
- **APPROVALS:** ETL listed to UL standards (US & Canada) for use in damp locations; not recommended for exterior applications

## DIMENSIONS



W	H	D
12 in	5.6 in	12.8 in
30.5 cm	14.2 cm	32.5 cm
<b>Mounting Weight</b> Approximate: 10 lb (5 kg)		

CONFIGURATOR

To configure your spec sheet online, go to [www.spilighting.com/LRU12075](http://www.spilighting.com/LRU12075). Not all options are available in all configurations; consult factory for details.

Required Field \*

Catalog LRU12075	Light Source*	Primary Finish*	Voltage*	Lamp Options*	Mounting*	Accessories	Options
	A		B	C	D	E	F

A - LIGHT SOURCE \*

To ensure color consistency, SPI uses precise bin selection and strict quality processes to maintain a 3-step (MacAdam) SDCM on all white LED lampings. Published LED luminaire wattages are calculated using a typical power supply efficiency of 88%; exact wattages may vary based on application.

☐ **L63W** | White 63W LED Light Engine

See last page for finish options

B - VOLTAGE \*

☐ **120-277V** | Universal Voltage

C - LAMP OPTIONS \*

Delivered lumens shown are at 4000K CCT; apply multiplier for delivered lumens at other CCT.

☐ **3500K**<sup>1</sup> | 3500K CCT

☐ **4000K** | 4000K CCT

<sup>1</sup> Apply .91 multiplier for delivered lumens

D - MOUNTING \*

Hinged housing clamps over Lightruss Rail and is self-supporting without tools. Field adjustable aircraft cable allows the fixture to be mounted at an application appropriate height (up to OAH). Fixture modules can be added, removed or replaced without dismantling mounting track.

☐ **DF\_AC** | Corrosion-resistant nickel alloy aircraft cables (default)

E - ACCESSORIES

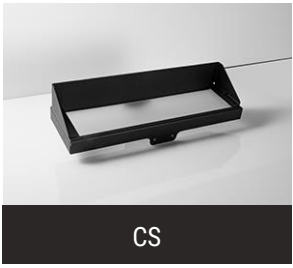
Product shown above with optional cut-off shields. Cut-off shield (CS) and louver (LV) options cannot be used together.

☐ **CS**<sup>2</sup> | Cut-Off Shield

☐ **LV**<sup>3</sup> | Louver

<sup>2</sup> Apply .85 multiplier for delivered lumens

<sup>3</sup> Apply .55 multiplier for delivered lumens



**F - OPTIONS**

---

☐ **F** | Fusing

## Standard Finishes

The colors shown are representative. Their actual appearance may vary due to differences in display settings. You can request color chips by emailing [contact@spilighting.com](mailto:contact@spilighting.com). Please note, finishes may not be available in all configurations.

### Paint Colors

<b>PT01</b> RAL9003 Signal White (Gloss)	<b>PT51</b> Matte White (Textured)	<b>PT02</b> White (Textured)	<b>PT04</b> RAL9001 Cream (Textured)	<b>PT11</b> Black (Textured)
---	---------------------------------------	---------------------------------	---	---------------------------------

### Metallic Paint Colors

<b>PT22</b> Platinum (Metallic Gloss)	<b>PT48</b> Brass (Metallic Textured)	<b>PT28</b> Dark Stainless (Metallic Gloss)	<b>PT49</b> Bronze (Metallic Textured)	<b>PT32</b> Dark Bronze (Metallic Gloss)
<b>PT46</b> Aluminum (Metallic Textured)				

## Specialty Finishes



More RAL®, Pantone®, and custom finishes are available upon request. Setup fee and additional lead time applies. Call factory for details.