

# Lightruss LED - Upgrade

LLA12050 48.50 in

JOB NAME:

TYPE:

NOTES:

## DESCRIPTION

LED Replacement Units for Lightruss Size 2 allow existing Lightruss Metal Halide systems to be upgraded to LED light engines. They are designed to fit into existing Lightruss system layouts and be a one-for-one tub replacement to maintain current light distribution. Offering up to 40% energy savings with the indirect LED system when compared to indirect Metal Halide systems, the Lightruss LED is a cost effective upgrade that reduces maintenance costs. Lightruss LED luminaire efficiency can reach up to 105 lumens/watt delivered. For a complimentary lighting layout, contact our applications team at [SPIteam@spilighting.com](mailto:SPIteam@spilighting.com).

## FEATURES & BENEFITS

- Drop in replacement tub allows for quick and easy upgrade for HID to LED
- Designed to fit into existing Lightruss systems and deliver the same performance
- Optical performance allows for the creation of a fully indirect LED system equal to current 400W and 1000W Metal Halide (MH) Lightruss Systems
- Up to 40% energy savings with an indirect LED system when compared to an indirect Metal Halide (MH) system
- IP68 light engines, connectors and fully potted drivers stand up to harsh natatorium environments
- Modular part system allows for ease of maintenance
- Precision injection molded optics used for consistent performance from unit to unit
- Standard top lens corrects color-over-angle discoloration, delivering a clean white beam suitable for highly-finished ceilings and walls
- Back cover plate available for applications such as bleachers, cat walks and viewing areas
- Footcandle levels are capable of meeting many HD television requirements
- Handcrafted in USA

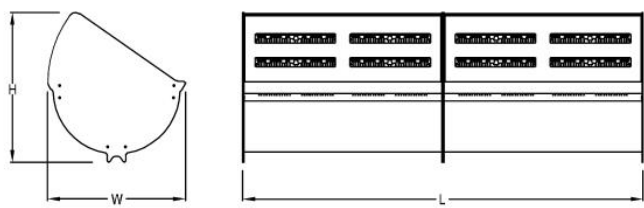


## SPECIFICATIONS

- **LIGHT SOURCE:** IP68 white LED light engine

- **CRI:** 80+
- **LUMEN MAINTENANCE:** L70 = >50,000 Hrs.
- **EFFICACY:** up to 105 lm/W delivered
- **CCT:** 4000K
- **DRIVER:** Fully potted integral Class 1 power supply standard
- **MAX AMBIENT OPERATING TEMP:** 34°C (93°F)
- **FINISH:** Full color offering is available so the replacement tub can match the color that was originally installed.
- **APPROVALS:** ETL listed to UL standards (US & Canada) for use in damp locations; not recommended for exterior applications

## DIMENSIONS



W	H	L
16.7 in	18.2 in	48.5 in
42.4 cm	46.2 cm	123.2 cm

Mounting Weight  
Consult Factory.

## CONFIGURATOR

To configure your spec sheet online, go to [www.spilighting.com/LLA12050](http://www.spilighting.com/LLA12050). Not all options are available in all configurations; consult factory for details.

### Required Field \*

Catalog	Light Source*	Primary Finish*	Voltage*	Lamp Options	CRI	Accessories
LLA12050						
	A		B	C	D	E

## A - LIGHT SOURCE \*

To ensure color consistency, SPI uses precise bin selection and strict quality processes to maintain a 3-step (MacAdam) SDCM on all white LED lampings. Published LED luminaire wattages are calculated using a typical power supply efficiency of 88%; exact wattages may vary based on application.

- ☐ **L507W** | White 507W LED Light Engine 4000K | Delivered Lumens: 53,712
- ☐ **L634W** | White 634W LED Light Engine 4000K | Delivered Lumens: 67,140
- ☐ **L761W** | White 761W LED Light Engine 4000K | Delivered Lumens: 80,568

See last page for finish options

B - VOLTAGE \*

☐ 120-277V | Universal Voltage

C - LAMP OPTIONS

- ☐ 2700K | 2700K CCT
- ☐ 5000K | 5000K CCT

D - CRI

- ☐ 90
- ☐ 80 | (default)

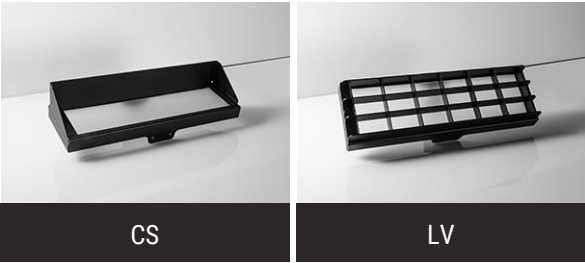
E - ACCESSORIES

Cut-off shield (CS) and louver (LV) options cannot be used together.

- ☐ CS <sup>1</sup> | Cut-Off Shield
- ☐ LV <sup>2</sup> | Louver

<sup>1</sup> Apply .85 multiplier for delivered lumens

<sup>2</sup> Apply .55 multiplier for delivered lumens



## Standard Finishes

The colors shown are representative. Their actual appearance may vary due to differences in display settings. You can request color chips by emailing [contact@spilighting.com](mailto:contact@spilighting.com). Please note, finishes may not be available in all configurations.

### Paint Colors

<b>PT01</b> RAL9003 Signal White (Gloss)	<b>PT51</b> Matte White (Textured)	<b>PT02</b> White (Textured)	<b>PT04</b> RAL9001 Cream (Textured)	<b>PT67</b> RAL7044 Silk Grey (Textured)
<b>PT53</b> RAL7035 Light Grey (Textured)	<b>PT54</b> RAL7037 Dusty Grey (Textured)	<b>PT55</b> RAL7012 Basalt Grey (Textured)	<b>PT56</b> RAL7016 Anthracite Grey (Textured)	<b>PT11</b> Black (Textured)
<b>PT57</b> RAL1015 Light Ivory (Textured)	<b>PT58</b> RAL8004 Copper Brown (Textured)	<b>PT59</b> RAL6021 Pale Green (Textured)	<b>PT60</b> RAL1019 Grey Beige (Textured)	<b>PT61</b> RAL7006 Beige Grey (Textured)
<b>PT62</b> RAL1003 Signal Yellow (Textured)	<b>PT63</b> RAL3001 Signal Red (Textured)	<b>PT64</b> RAL6001 Emerald Green (Textured)	<b>PT65</b> RAL5005 Signal Blue (Textured)	<b>PT66</b> RAL5003 Sapphire Blue (Textured)

### Metallic Paint Colors

<b>PT22</b> Platinum (Metallic Gloss)	<b>PT48</b> Brass (Metallic Textured)	<b>PT28</b> Dark Stainless (Metallic Gloss)	<b>PT49</b> Bronze (Metallic Textured)	<b>PT32</b> Dark Bronze (Metallic Gloss)
<b>PT46</b> Aluminum (Metallic Textured)				

## Specialty Finishes



More RAL®, Pantone®, and custom finishes are available upon request. Setup fee and additional lead time applies.Call factory for details.