

Harbor - Double Bars

AIW8274 25.00 in

JOB NAME:

TYPE:

NOTES:

DESCRIPTION

The Harbor sconce is available with varying levels of ornamentation to adapt to many types of spaces and to meet a range of budgets. The fixture adds four horizontal bars for adornment, while still retaining the clean lines of the Harbor series.

FEATURES & BENEFITS

- Compliant with Americans with Disabilities Act (ADA) requirements
- Optional VAN (vanity mount) features solid end caps for a fully enclosed fixture
- Exterior family fixtures available to carry a consistent lighting design throughout a project
- Handcrafted in USA

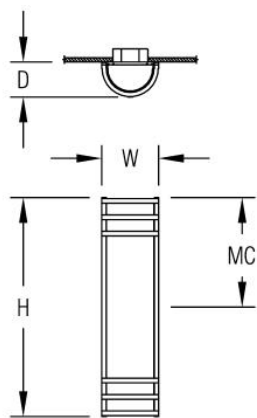
SPECIFICATIONS

- **LIGHT SOURCE:** White LED light engine
- **CRI:** 80+ or 90+
- **LUMEN MAINTENANCE:** L70 = >50,000 Hrs.
- **CCT:** 2700K, 3000K, 3500K, 4000K, 5000K
- **DRIVER:** Integral Class 2 power supply standard
- **DIMMING:** 1% minimum dim level standard
- **CONTROLS:** 0-10V standard. Lutron Athena and nLight AIR optional. Contact factory for other controls (e.g., Enlighted, Encelium, Wattstopper, WaveLinx, Current NX, or Casambi)
- **EMERGENCY:** Remote battery option is provided with 10W Constant Power Battery back-up, providing 90 Minutes of Emergency operation. Contact factory for other Emergency options.
- **DIFFUSER:** Formed opal acrylic lens standard; matte acrylic optional. Prismatic top lens and bottom lens standard with any LED module. They shield direct view of the lamp in applications where views above or below the fixture are possible and prevent external objects from entering the fixture.
- **MOUNTING:** Mounts to standard 4" octagonal junction box
- **MODIFICATIONS:** Consult factory for all modification requests



- **APPROVALS:** ETL listed to UL standards (US & Canada) for use in damp locations; not recommended for exterior applications

DIMENSIONS



W	H	D	MC
7 in	25 in	4 in	12.5 in
17.8 cm	63.5 cm	10.2 cm	31.8 cm
Mounting Weight			
Approximate: 25 lb (12 kg)			

CONFIGURATOR

To configure your spec sheet online, go to www.spilighting.com/AIW8274. Not all options are available in all configurations; consult factory for details.

Required Field *

Catalog AIW8274	Light Source*	Primary Finish*	Voltage*	Lamp Options*	CRI*	Controls*	Diffuser*	Mounting	Emergency
								Finish:	
	A		B	C	D	E	F	G	H

A - LIGHT SOURCE *

To ensure color consistency, SPI uses precise bin selection and strict quality processes to maintain a 3-step (MacAdam) SDCM on all white LED lampings. Published LED luminaire wattages are calculated using a typical power supply efficiency of 88%; exact wattages may vary based on application.

- ☐ **L22W** | White 22W LED Light Engine| Delivered Lumens: 1,501
- ☐ **L43W** | White 43W LED Light Engine| Delivered Lumens: 3,002

See last page for finish options

B - VOLTAGE *

- ☐ **120-277V** | Universal Voltage

C - LAMP OPTIONS *

Apply multiplier from chart for delivered lumens at other CCT's and CRI's.

- ☐ 2700K | 2700K CCT
- ☐ 3000K | 3000K CCT
- ☐ 3500K | 3500K CCT
- ☐ 4000K | 4000K CCT
- ☐ 5000K | 5000K CCT

	80 CRI	90 CRI
2700K	1.00	0.84
3000K	1.00	0.84
3500K	1.00	0.84
4000K	1.00	0.84
5000K	1.00	0.84

D - CRI *

- ☐ DF_80 | (default)
- ☐ 90

E - CONTROLS *

Extended lead times may apply for controls other than 0-10V. Contact factory for additional control options such as Enlighted, Encelium, Wattstopper, WaveLinx, Casambi, Current NX, or others.

- ☐ DF_DIM1 | 0-10V Control, 1% Dimming (default)
- ☐ AWRN | Lutron Athena Wireless Node, 1% Dimming
- ☐ NLTA | Acuity nLight Air, 1% Dimming

F - DIFFUSER *

- ☐ DF_OA | Opal Acrylic Diffuser Lens (default)
- ☐ MA01 | Matte Acrylic Diffuser Lens



G - MOUNTING

Vanity mount features solid end caps.

- ☐ VAN | Vanity Mount (See last page for finish options)

H - EMERGENCY

10W, Constant Power Battery Back-up, with 90 minutes of emergency operation. EMR includes damp location enclosure for Battery back-up.

☐ **EMR** | Emergency Battery Remote

Standard Finishes

The colors shown are representative. Their actual appearance may vary due to differences in display settings. You can request color chips by emailing contact@spilighting.com. Please note, finishes may not be available in all configurations.

Paint Colors

PT01 RAL9003 Signal White (Gloss)	PT51 Matte White (Textured)	PT02 White (Textured)	PT04 RAL9001 Cream (Textured)	PT67 RAL7044 Silk Grey (Textured)
PT53 RAL7035 Light Grey (Textured)	PT54 RAL7037 Dusty Grey (Textured)	PT55 RAL7012 Basalt Grey (Textured)	PT56 RAL7016 Anthracite Grey (Textured)	PT11 Black (Textured)
PT57 RAL1015 Light Ivory (Textured)	PT58 RAL8004 Copper Brown (Textured)	PT59 RAL6021 Pale Green (Textured)	PT60 RAL1019 Grey Beige (Textured)	PT61 RAL7006 Beige Grey (Textured)
PT62 RAL1003 Signal Yellow (Textured)	PT63 RAL3001 Signal Red (Textured)	PT64 RAL6001 Emerald Green (Textured)	PT65 RAL5005 Signal Blue (Textured)	PT66 RAL5003 Sapphire Blue (Textured)

Brushed Copper

BCU Brushed Solid Copper

Metallic Paint Colors

PT22 Platinum (Metallic Gloss)	PT48 Brass (Metallic Textured)	PT28 Dark Stainless (Metallic Gloss)	PT49 Bronze (Metallic Textured)	PT32 Dark Bronze (Metallic Gloss)
PT46 Aluminum (Metallic Textured)				

Polished Copper

PCU Polished Solid Copper

Brushed Aluminum

BAL Brushed Aluminum

Brushed Brass

BBR Brushed Solid Brass

Polished-Tinted Brass

ATBR Antique Tinted Brass	DTBR Dark Tinted Brass	PBR Polished Brass
-------------------------------------	----------------------------------	------------------------------

Polished Plated Brass

CPBR Chrome Plated Polished Brass	SNBR Satin Nickel Plated Brass
---	--

Specialty Finishes



More RAL®, Pantone®, and custom finishes are available upon request. Setup fee and additional lead time applies. Call factory for details.