

# INACTIVE SPEC SHEET

Summerfield

AIW8284 15.00 in

**SPI**LIGHTING

PROJECT DETAILS

JOB NAME:

TYPE:

NOTES:

## DESCRIPTION

The brass accent piece adds interest and flair to this otherwise simple fixture, which is perfectly suited for corridors, small spaces, or anywhere that a decorative element is needed. Choose from a palette of both painted and metal finishes.

## FEATURES & BENEFITS

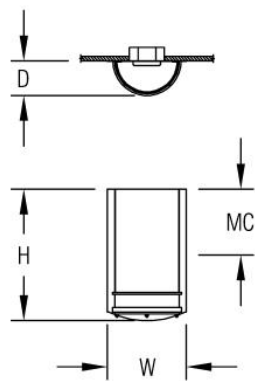
- Opal acrylic diffuser lens enhances a space with filtered illumination
- Compliant with Americans with Disabilities Act (ADA) requirements
- Handcrafted in USA

## SPECIFICATIONS

- **LIGHT SOURCE:** White LED light engine or incandescent
- **CRI:** 80+ (contact factory for 90+)
- **Lumen Maintenance:** L70 = >50,000 Hrs.
- **CCT:** Available LED color temperatures: 3000K, 3500K, or 4000K
- **DRIVER:** LED versions feature integral Class 2 power supply standard
- **DIMMING:** 0-10V controls standard to 10% on LED light engines
- **EMERGENCY:** Emergency battery remote optional
- **DIFFUSER:** Opal acrylic is standard; matte acrylic and hand painted lenses optional. TL (top lens) standard with any LED module.
- **MOUNTING:** Mounts to standard 4" octagonal junction box
- **MODIFICATIONS:** Consult factory for all modification requests
- **APPROVALS:** ETL listed to UL standards (US & Canada) for use in damp locations; not recommended for exterior applications



DIMENSIONS



<b>W</b>	<b>H</b>	<b>D</b>	<b>MC</b>	
9 in	15 in	4 in	7.5 in	
22.9 cm	38.1 cm	10.2 cm	19 cm	
<b>Mounting Weight</b>				
Approximate: 25 lb (12 kg)				

CONFIGURATOR

To configure your spec sheet online, go to [www.spilighting.com/AIW8284](http://www.spilighting.com/AIW8284). Not all options are available in all configurations; consult factory for details.

Required Field \*

Catalog	Light Source*	Primary Finish*	Voltage*	Lamp Options*	Diffuser*
AIW8284					
	A		B	C	D

A - LIGHT SOURCE \*

To ensure color consistency, SPI uses precise bin selection and strict quality processes to maintain a 3-step (MacAdam) SDCM on all white LED lampings. Published LED luminaire wattages are calculated using a typical power supply efficiency of 88%; exact wattages may vary based on application.

- ☐ **L29W** | White 29W LED Light Engine
- ☐ **L14W** | White 14W LED Light Engine
- ☐ **2N40**<sup>1</sup> | 2INC40W/T10/Med

See last page for finish options

<sup>1</sup> Incandescent Lamp(s) Not Included

B - VOLTAGE \*

- ☐ **120-277V** | Universal Voltage
- ☐ **120V**<sup>2</sup> | 120 Volt

<sup>2</sup> For incandescent light source only

C - LAMP OPTIONS \*

Delivered lumens shown are at 4000K CCT; apply multiplier for delivered lumens at other CCT.

- ☐ 3000K <sup>3</sup> | 3000K CCT
- ☐ 3500K <sup>4</sup> | 3500K CCT
- ☐ 4000K | 4000K CCT

<sup>3</sup> Apply .95 multiplier for delivered lumens

<sup>4</sup> Apply .97 multiplier for delivered lumens

D - DIFFUSER \*

- ☐ DF\_OA | Opal Acrylic Diffuser Lens (default)
- ☐ HP01 | Silver Hand Painted Acrylic Diffuser
- ☐ HP02 | Beige Hand Painted Acrylic Diffuser
- ☐ HP03 | Amber Hand Painted Acrylic Diffuser
- ☐ MA01 | Matte Acrylic Diffuser Lens



OA



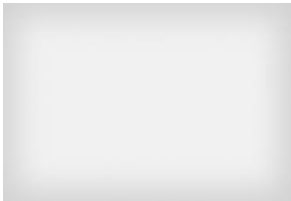
HP01



HP02



HP03



MA01

## Standard Finishes

The colors shown are representative. Their actual appearance may vary due to differences in display settings. You can request color chips by emailing [contact@spilighting.com](mailto:contact@spilighting.com). Please note, finishes may not be available in all configurations.

### Paint Colors

<b>PT01</b> RAL9003 Signal White (Gloss)	<b>PT51</b> Matte White (Textured)	<b>PT02</b> White (Textured)	<b>PT04</b> RAL9001 Cream (Textured)	<b>PT11</b> Black (Textured)
---	---------------------------------------	---------------------------------	---	---------------------------------

### Metallic Paint Colors

<b>PT22</b> Platinum (Metallic Gloss)	<b>PT48</b> Brass (Metallic Textured)	<b>PT28</b> Dark Stainless (Metallic Gloss)	<b>PT49</b> Bronze (Metallic Textured)	<b>PT32</b> Dark Bronze (Metallic Gloss)
<b>PT46</b> Aluminum (Metallic Textured)				

### Brushed Aluminum

<b>BAL</b> Brushed Aluminum
--------------------------------

### Brushed Brass

<b>BBR</b> Brushed Solid Brass
-----------------------------------

### Polished-Tinted Brass

<b>ATBR</b> Antique Tinted Brass	<b>DTBR</b> Dark Tinted Brass	<b>PBR</b> Polished Brass
-------------------------------------	----------------------------------	------------------------------

### Polished Plated Brass

<b>CPBR</b> Chrome Plated Polished Brass	<b>SNBR</b> Satin Nickel Plated Brass
---	--

## Specialty Finishes



More RAL®, Pantone®, and custom finishes are available upon request. Setup fee and additional lead time applies. Call factory for details.