

# York - 12"

AIW8331 12.00 in

**SPI**LIGHTING

PROJECT DETAILS

JOB NAME:

TYPE:

NOTES:

## DESCRIPTION

The York is a simple but elegant sconce that can either be used as a decorative element or be painted to disappear in the space. The fixture can be designed for any application where elegance is important. Choose from a palette of both painted and metal finishes.

## FEATURES & BENEFITS

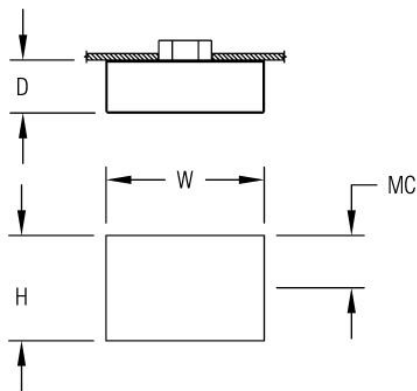
- Compliant with Americans with Disabilities Act (ADA) requirements
- Versatile design allows fixture to be mounted in any orientation
- Handcrafted in USA

## SPECIFICATIONS

- **LIGHT SOURCE:** White LED light engine or incandescent
- **CRI:** 80+ (contact factory for 90+)
- **Lumen Maintenance:** L70 = >50,000 Hrs.
- **CCT:** Available LED color temperatures: 2700K, 3000K, 3500K, 4000K, 5000K
- **DRIVER:** LED versions feature integral Class 2 power supply standard
- **DIMMING:** 0-10V controls standard to 1% on LED light engines
- **CONTROLS:** Contact factory for control options (e.g., Lutron Athena, Current NX, nLight, Enlighted, Encelium, Wattstopper, WaveLinx, or Casambi)
- **EMERGENCY:** Remote battery option is provided with 10W Constant Power Battery back-up, providing 90 Minutes of Emergency operation. Contact factory for other Emergency options.
- **CONSTRUCTION:** Formed metal construction provides durable protection for internal components and is recyclable
- **MOUNTING:** Mounts to standard 4" octagonal junction box
- **MODIFICATIONS:** Consult factory for all modification requests
- **APPROVALS:** ETL listed to UL standards (US & Canada) for use in damp locations; not recommended for exterior applications



DIMENSIONS



W	H	D	MC
12 in	8 in	4 in	4 in
30.5 cm	20.3 cm	10.2 cm	10.2 cm
Mounting Weight			
Approximate: 25 lb (12 kg)			

CONFIGURATOR

To configure your spec sheet online, go to [www.spilighting.com/AIW8331](http://www.spilighting.com/AIW8331). Not all options are available in all configurations; consult factory for details.

Required Field \*

Catalog	Light Source*	Primary Finish*	Voltage*	Lamp Options*	CRI	Emergency	Faceplate Options	Lens
AIW8331								
	A		B	C	D	E	F	G

A - LIGHT SOURCE \*

To ensure color consistency, SPI uses precise bin selection and strict quality processes to maintain a 3-step (MacAdam) SDCM on all white LED lampings. Published LED luminaire wattages are calculated using a typical power supply efficiency of 88%; exact wattages may vary based on application. Alternative wattages available upon request.

- ☐ **L7W** | White 7W LED Light Engine | Delivered Lumens: 509
- ☐ **L14W** | White 14W LED Light Engine | Delivered Lumens: 1,017
- ☐ **2N60**<sup>1</sup> | 2INC60W/T10/MED

See last page for finish options

<sup>1</sup> Incandescent Lamp(s) Not Included

B - VOLTAGE \*

- ☐ **120-277V** | Universal Voltage
- ☐ **120V**<sup>2</sup> | 120 Volt

<sup>2</sup> For incandescent light source only

C - LAMP OPTIONS \*

Apply multiplier from chart for delivered lumens at other CCT's and CRI's. Not required with incandescent.

- ☐ 2700K | 2700K CCT
- ☐ 3000K | 3000K CCT
- ☐ 3500K | 3500K CCT
- ☐ 4000K | 4000K CCT
- ☐ 5000K | 5000K CCT

D - CRI

- ☐ DF\_80 | (default)
- ☐ 90

E - EMERGENCY

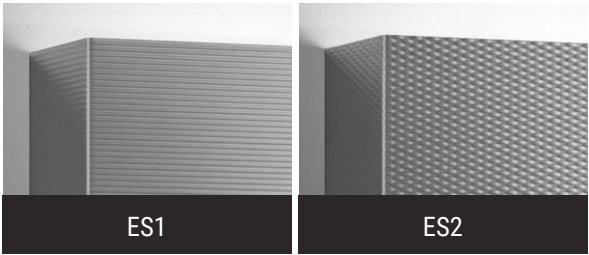
10W, Constant Power Battery Back-up, with 90 minutes of emergency operation. EMR includes damp location enclosure for Battery back-up.

- ☐ EMR | Emergency Battery Remote

F - FACEPLATE OPTIONS

Patterned stainless steel faceplates cannot be painted or metal finished. Please leave the primary finish BLANK when specifying this option.

- ☐ ES1 | Embossed Stainless Steel-Linear Pattern
- ☐ ES2 | Embossed Stainless Steel-Cross Hatch Pattern



G - LENS

Top lens and bottom lens standard with any LED module. Choose option only if specifying incandescent.

- ☐ TL | Top Lens

## Standard Finishes

The colors shown are representative. Their actual appearance may vary due to differences in display settings. You can request color chips by emailing [contact@spilighting.com](mailto:contact@spilighting.com). Please note, finishes may not be available in all configurations.

### Paint Colors

<b>PT01</b> RAL9003 Signal White (Gloss)	<b>PT51</b> Matte White (Textured)	<b>PT02</b> White (Textured)	<b>PT04</b> RAL9001 Cream (Textured)	<b>PT67</b> RAL7044 Silk Grey (Textured)
<b>PT53</b> RAL7035 Light Grey (Textured)	<b>PT54</b> RAL7037 Dusty Grey (Textured)	<b>PT55</b> RAL7012 Basalt Grey (Textured)	<b>PT56</b> RAL7016 Anthracite Grey (Textured)	<b>PT11</b> Black (Textured)
<b>PT57</b> RAL1015 Light Ivory (Textured)	<b>PT58</b> RAL8004 Copper Brown (Textured)	<b>PT59</b> RAL6021 Pale Green (Textured)	<b>PT60</b> RAL1019 Grey Beige (Textured)	<b>PT61</b> RAL7006 Beige Grey (Textured)
<b>PT62</b> RAL1003 Signal Yellow (Textured)	<b>PT63</b> RAL3001 Signal Red (Textured)	<b>PT64</b> RAL6001 Emerald Green (Textured)	<b>PT65</b> RAL5005 Signal Blue (Textured)	<b>PT66</b> RAL5003 Sapphire Blue (Textured)

### Brushed Copper

<b>BCU</b> Brushed Solid Copper	
------------------------------------	--

### Brushed Stainless

<b>BSS</b> Brushed Stainless Steel	
---------------------------------------	--

### Metallic Paint Colors

<b>PT22</b> Platinum (Metallic Gloss)	<b>PT48</b> Brass (Metallic Textured)	<b>PT28</b> Dark Stainless (Metallic Gloss)	<b>PT49</b> Bronze (Metallic Textured)	<b>PT32</b> Dark Bronze (Metallic Gloss)
<b>PT46</b> Aluminum (Metallic Textured)				

### Brushed Aluminum

<b>BAL</b> Brushed Aluminum	
--------------------------------	--

### Brushed Brass

<b>BBR</b> Brushed Solid Brass	
-----------------------------------	--

## Specialty Finishes



More RAL®, Pantone®, and custom finishes are available upon request. Setup fee and additional lead time applies. Call factory for details.