

# INACTIVE SPEC SHEET

## Penrose - Pendant

AIP10799 30.30 in

JOB NAME:  
TYPE:  
NOTES:

### DESCRIPTION

The Penrose's unique decorative bars hold the opal acrylic bowl in place. Matte acrylic bowl also available. Choose from a palette of both painted and metal finishes.

#### FEATURES & BENEFITS

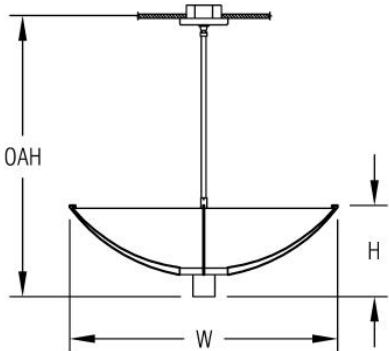
- Opal acrylic diffuser lens enhances a space with filtered illumination
- Handcrafted in USA

#### SPECIFICATIONS

- **LIGHT SOURCE:** White LED light engine or incandescent
- **CRI:** 80+ (contact factory for 90+)
- **Lumen Maintenance:** L70 = >50,000 Hrs.
- **CCT:** Available LED color temperatures: 3000K, 3500K, or 4000K
- **DRIVER:** LED versions feature integral Class 2 power supply standard
- **DIMMING:** 0-10V controls standard to 10% on LED light engines
- **FINISH:** Choose from 26 standard thermoset polyester powder coat paint colors or brushed aluminum finish. RAL®, Pantone®, or custom finishes available upon request.
- **APPROVALS:** ETL listed to UL standards (US & Canada) for use in damp locations; not recommended for exterior applications



### DIMENSIONS



W	H	OAH
30.3 in	10.3 in	36 in
77 cm	26.2 cm	91.4 cm

**Mounting Weight**  
Approximate: 50 lb (23 kg)

CONFIGURATOR

To configure your spec sheet online, go to [www.spilighting.com/AIP10799](http://www.spilighting.com/AIP10799). Not all options are available in all configurations; consult factory for details.

Required Field \*

Catalog AIP10799	Light Source*	Primary Finish*	Voltage*	Lamp Options*	Diffuser*	Mounting*	Canopy	Options	Other Than Standard Options
							Finish: 	Finish: 	
	A		B	C	D	E	F	G	H

A - LIGHT SOURCE \*

To ensure color consistency, SPI uses precise bin selection and strict quality processes to maintain a 3-step (MacAdam) SDCM on all white LED lampings. Published LED luminaire wattages are calculated using a typical power supply efficiency of 88%; exact wattages may vary based on application.

- ☐ **L57W** | White 57W LED Light Engine
- ☐ **L115W** | White 115W LED Light Engine
- ☐ **6N100** <sup>1</sup> | 6INC100W/A19

See last page for finish options

<sup>1</sup> Incandescent Lamp(s) Not Included

B - VOLTAGE \*

- ☐ **120-277V** | Universal Voltage
- ☐ **120V** <sup>2</sup> | 120 Volt
- ☐ **277V** | 277 Volt

<sup>2</sup> For incandescent light source only

C - LAMP OPTIONS \*

Delivered lumens shown are at 4000K CCT; apply multiplier for delivered lumens at other CCT.

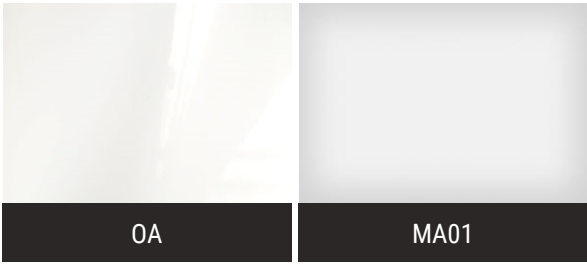
- ☐ **3000K** <sup>3</sup> | 3000K CCT
- ☐ **3500K** <sup>4</sup> | 3500K CCT
- ☐ **4000K** | 4000K CCT

<sup>3</sup> Apply .95 multiplier for delivered lumens

<sup>4</sup> Apply .97 multiplier for delivered lumens

D - DIFFUSER \*

- ☐ **DF\_OA** | Opal Acrylic Diffuser Lens (default)
- ☐ **MA01** | Matte Acrylic Diffuser Lens



## E - MOUNTING \*

Mounts to standard 4" octagonal junction box with auxiliary mounting holes. Additional support required (by others). Canopy features a 45 degree swivel.

☐ **DF\_STM** | Stem Mount (default)

## F - CANOPY

☐ **SAM45** | 45 Degree Swivel (See last page for finish options)

## G - OPTIONS

☐ **KS01** | Straight Stem Multi Kit (to Transition Plate) (See last page for finish options)



## H - OTHER THAN STANDARD OPTIONS

Specify overall height required from ceiling to the bottom of the fixture.

**OAH** | Pendant suspension length other than standard Length:

## Standard Finishes

The colors shown are representative. Their actual appearance may vary due to differences in display settings. You can request color chips by emailing [contact@spilighting.com](mailto:contact@spilighting.com). Please note, finishes may not be available in all configurations.

### Paint Colors

<b>PT01</b> RAL9003 Signal White (Gloss)	<b>PT51</b> Matte White (Textured)	<b>PT02</b> White (Textured)	<b>PT04</b> RAL9001 Cream (Textured)	<b>PT11</b> Black (Textured)
---	---------------------------------------	---------------------------------	---	---------------------------------

### Metallic Paint Colors

<b>PT22</b> Platinum (Metallic Gloss)	<b>PT48</b> Brass (Metallic Textured)	<b>PT28</b> Dark Stainless (Metallic Gloss)	<b>PT49</b> Bronze (Metallic Textured)	<b>PT32</b> Dark Bronze (Metallic Gloss)
<b>PT46</b> Aluminum (Metallic Textured)				

### Brushed Aluminum

<b>BAL</b> Brushed Aluminum
--------------------------------

## Specialty Finishes



More RAL®, Pantone®, and custom finishes are available upon request. Setup fee and additional lead time applies. Call factory for details.