

# Ara Exterior

SEW11627 20.00 in

**SPI**LIGHTING

PROJECT DETAILS

JOB NAME:

TYPE:

NOTES:

## DESCRIPTION

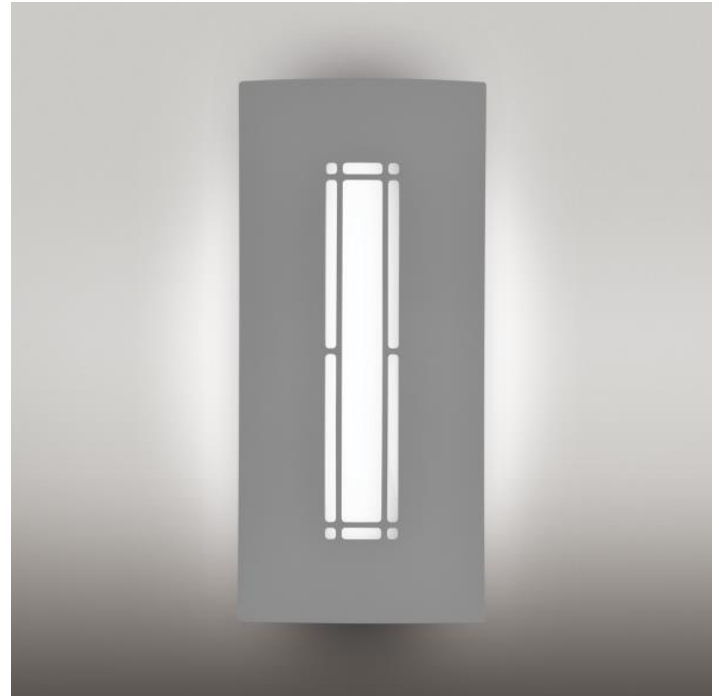
The strength of the Ara is in the simplicity of the decorative faceplates. Eight different designs in three different sizes provide options for any space. We offer this fixture for interior and exterior applications. Ara is an ADA compliant wall sconce. Choose from a palette of painted finishes.

### FEATURES & BENEFITS

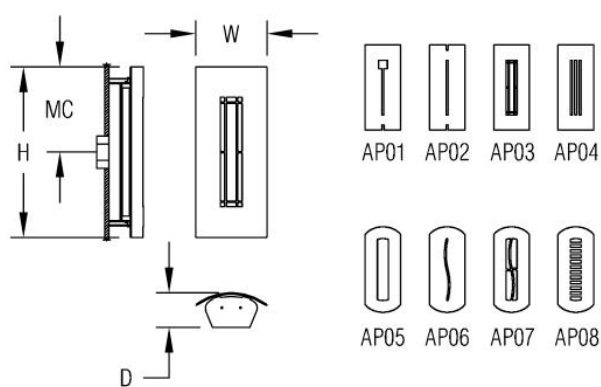
- Fixture is available in several decorative panels, enabling the fixture to blend into a space or make an artistic statement
- Versatile design allows fixture to be mounted in any orientation
- Compliant with Americans with Disabilities Act (ADA) requirements
- Handcrafted in USA

### SPECIFICATIONS

- **LIGHT SOURCE:** IP66 white LED light engine
- **CRI:** 80+ or 90+
- **LUMEN MAINTENANCE:** L70 = >50,000 Hrs.
- **CCT:** 2700K, 3000K, 3500K, 4000K, 5000K
- **DRIVER:** Integral Class 2 power supply standard
- **DIMMING:** 0-10V controls standard to 1% on LED light engines
- **CONTROLS:** Contact factory for control options (e.g., Lutron Athena, Current NX, nLight, Enlighted, Encelium, Wattstopper, WaveLinx, or Casambi)
- **EMERGENCY:** Remote battery option is provided with 10W Constant Power Battery back-up, providing 90 Minutes of Emergency operation. Contact factory for other Emergency options.
- **CONSTRUCTION:** Aluminum construction provides durable protection for internal components and is recyclable
- **MOUNTING:** Mounts to standard 4" octagonal junction box
- **MODIFICATIONS:** Consult factory for all modification requests
- **APPROVALS:** ETL listed to UL standards (US and Canada) for use in wet locations



DIMENSIONS



<b>W</b>	<b>H</b>	<b>D</b>	<b>MC</b>
8.3 in	20 in	4 in	9.3 in
21.1 cm	50.8 cm	10.2 cm	23.6 cm
<b>Mounting Weight</b> Consult Factory.			

CONFIGURATOR

To configure your spec sheet online, go to [www.spilighting.com/SEW11627](http://www.spilighting.com/SEW11627). Not all options are available in all configurations; consult factory for details.

Required Field \*

Catalog SEW11627	Light Source*	Primary Finish*	Voltage*	Lamp Options*	CRI*	Emergency	Options*
	A		B	C	D	E	F

A - LIGHT SOURCE \*

To ensure color consistency, SPI uses precise bin selection and strict quality processes to maintain a 3-step (MacAdam) SDCM on all white LED lampings. Published LED luminaire wattages are calculated using a typical power supply efficiency of 88%; exact wattages may vary based on application. Alternative wattages available upon request.

☐ **L12W** | White 12W LED Light Engine | Delivered Lumens: 292

See last page for finish options

B - VOLTAGE \*

☐ **120-277V** | Universal Voltage

C - LAMP OPTIONS \*

Apply multiplier from chart for delivered lumens at other CCT's and CRI's.

- ☐ **2700K** | 2700K CCT
- ☐ **3000K** | 3000K CCT
- ☐ **3500K** | 3500K CCT
- ☐ **4000K** | 4000K CCT
- ☐ **5000K** | 5000K CCT

	80 CRI	90 CRI
2700K	1.00	0.84
3000K	1.00	0.84
3500K	1.00	0.84
4000K	1.00	0.84
5000K	1.00	0.84

### D - CRI \*

- ☐ **DF\_80** | (default)
- ☐ **90**

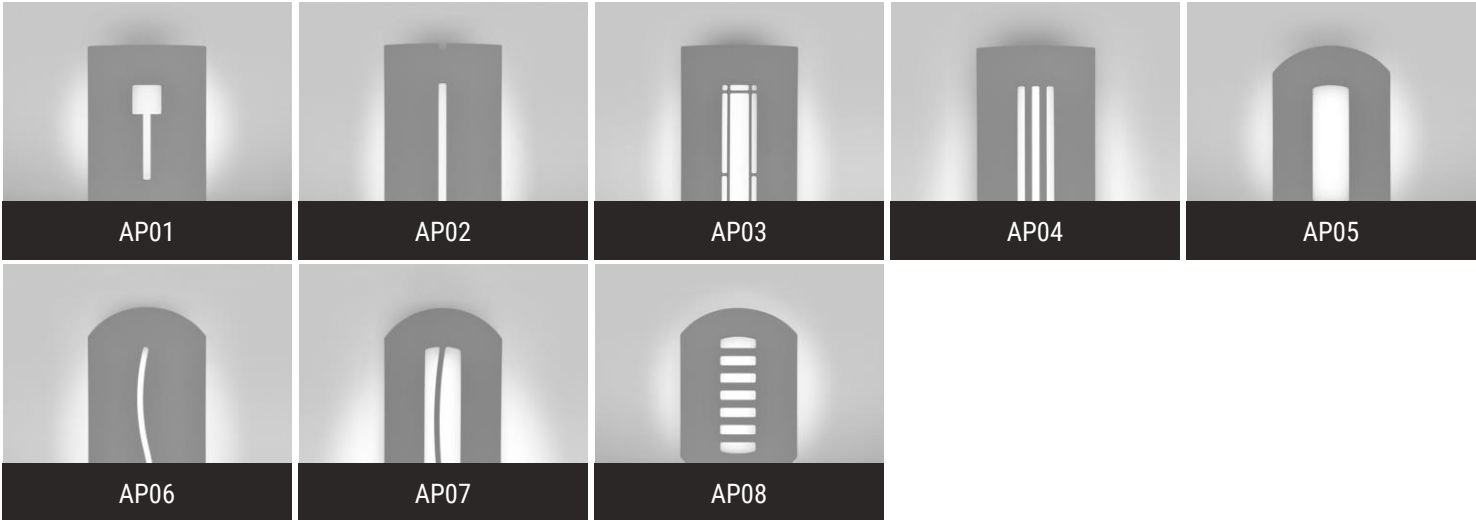
### E - EMERGENCY

10W, Constant Power Battery Back-up, with 90 minutes of emergency operation. EMR-Damp includes damp location enclosure for Battery back-up. EMR-W/L includes a wet location enclosure for battery back-up.

- ☐ **EMR-DAMP** | Emergency Battery Remote - Damp Location
- ☐ **EMR-W/L** | Emergency Battery Remote - Wet Location

### F - OPTIONS \*

- ☐ **AP01** | Keyhole Window
- ☐ **AP02** | Narrow Window
- ☐ **AP03** | Prairie Window
- ☐ **AP04** | Three Windows
- ☐ **AP05** | Large Window
- ☐ **AP06** | Curved Window
- ☐ **AP07** | Multi Window
- ☐ **AP08** | Slotted Window



## Standard Finishes

The colors shown are representative. Their actual appearance may vary due to differences in display settings. You can request color chips by emailing [contact@spilighting.com](mailto:contact@spilighting.com). Please note, finishes may not be available in all configurations.

### Paint Colors

<b>PT01</b> RAL9003 Signal White (Gloss)	<b>PT51</b> Matte White (Textured)	<b>PT02</b> White (Textured)	<b>PT04</b> RAL9001 Cream (Textured)	<b>PT67</b> RAL7044 Silk Grey (Textured)
<b>PT53</b> RAL7035 Light Grey (Textured)	<b>PT54</b> RAL7037 Dusty Grey (Textured)	<b>PT55</b> RAL7012 Basalt Grey (Textured)	<b>PT56</b> RAL7016 Anthracite Grey (Textured)	<b>PT11</b> Black (Textured)
<b>PT57</b> RAL1015 Light Ivory (Textured)	<b>PT58</b> RAL8004 Copper Brown (Textured)	<b>PT59</b> RAL6021 Pale Green (Textured)	<b>PT60</b> RAL1019 Grey Beige (Textured)	<b>PT61</b> RAL7006 Beige Grey (Textured)
<b>PT62</b> RAL1003 Signal Yellow (Textured)	<b>PT63</b> RAL3001 Signal Red (Textured)	<b>PT64</b> RAL6001 Emerald Green (Textured)	<b>PT65</b> RAL5005 Signal Blue (Textured)	<b>PT66</b> RAL5003 Sapphire Blue (Textured)

### Metallic Paint Colors

<b>PT22</b> Platinum (Metallic Gloss)	<b>PT48</b> Brass (Metallic Textured)	<b>PT28</b> Dark Stainless (Metallic Gloss)	<b>PT49</b> Bronze (Metallic Textured)	<b>PT32</b> Dark Bronze (Metallic Gloss)
<b>PT46</b> Aluminum (Metallic Textured)				

### Brushed Aluminum

<b>BAL</b> Brushed Aluminum
--------------------------------

## Specialty Finishes



More RAL®, Pantone®, and custom finishes are available upon request. Setup fee and additional lead time applies.Call factory for details.