

# INACTIVE SPEC SHEET

## Marker Exterior - Wall

EEW11839 4.50 in

**SPI**LIGHTING

PROJECT DETAILS

JOB NAME:

TYPE:

NOTES:

### DESCRIPTION

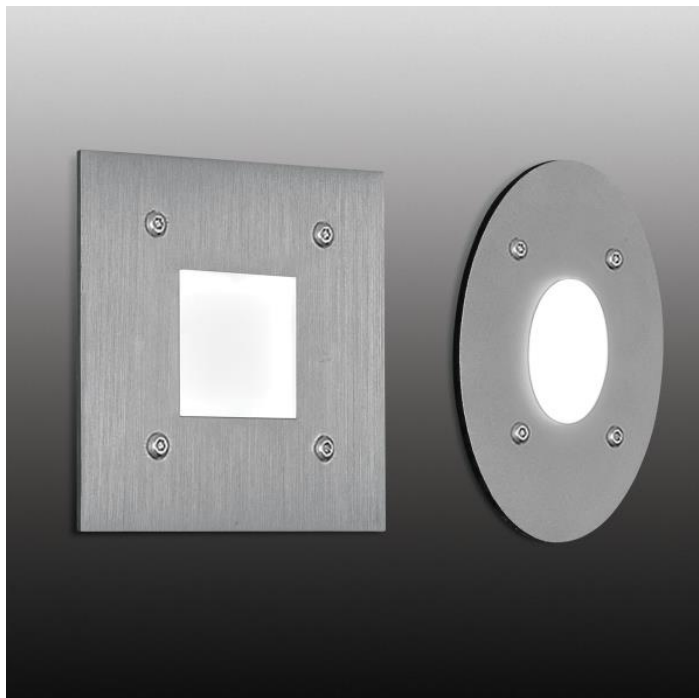
Enjoy maximum flexibility in designing your space with the Marker. This collection offers ceiling mounts and wall sconces, both available in a round or square shape. Illumination patterns can be specifically tailored to your space by choosing one of several options available. Utilizing a low-energy consumption LED light source, the Marker is a highly efficient and cost saving option. Choose from a palette of both painted and metal finishes.

### FEATURES & BENEFITS

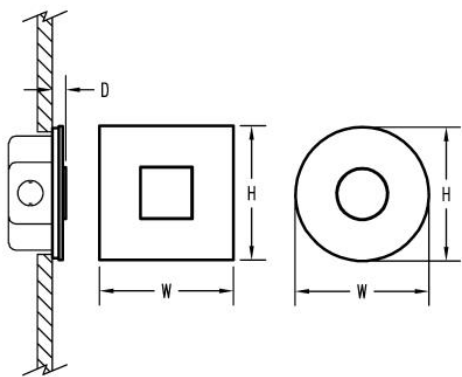
- Optically engineered, precision LED optics control light distribution and direct light where it is needed
- Compliant with Americans with Disabilities Act (ADA) requirements
- Handcrafted in USA

### SPECIFICATIONS

- **LIGHT SOURCE:** White LED light engine
- **CRI:** 80+
- **LUMEN MAINTENANCE:** L70 = >50,000 Hrs.
- **DRIVER:** Integral Class 2 power supply standard
- **DIMMING:** 0-10V controls standard on LED light engines
- **CONSTRUCTION:** Aluminum construction provides durable protection for internal components and is recyclable
- **FINISH:** Choose from 26 standard thermoset polyester powder coat paint colors or various metal finishes. RAL®, Pantone®, or custom finishes available upon request.
- **MOUNTING:** Mounts to 4" octagonal x 2" deep junction box, required (by others)
- **MODIFICATIONS:** Consult factory for all modification requests
- **APPROVALS:** ETL listed to UL standards (US and Canada) for use in wet locations



DIMENSIONS



W	H	D
4.5 in	4.5 in	0.5 in
11.4 cm	11.4 cm	1.3 cm
<b>Mounting Weight</b> Consult Factory.		

CONFIGURATOR

To configure your spec sheet online, go to [www.spilighting.com/EEW11839](http://www.spilighting.com/EEW11839). Not all options are available in all configurations; consult factory for details.

Required Field \*

Catalog	Light Source*	Primary Finish*	Voltage	Color Accents	Motif Accents*	Options
EEW11839						
	A		B	C	D	E

A - LIGHT SOURCE \*

To ensure color consistency, SPI uses precise bin selection and strict quality processes to maintain a 3-step (MacAdam) SDCM on all white LED lampings. Published LED luminaire wattages are calculated using a typical power supply efficiency of 88%; exact wattages may vary based on application.

☐ **L4W** | White 4W LED Light Engine 3000K

See last page for finish options

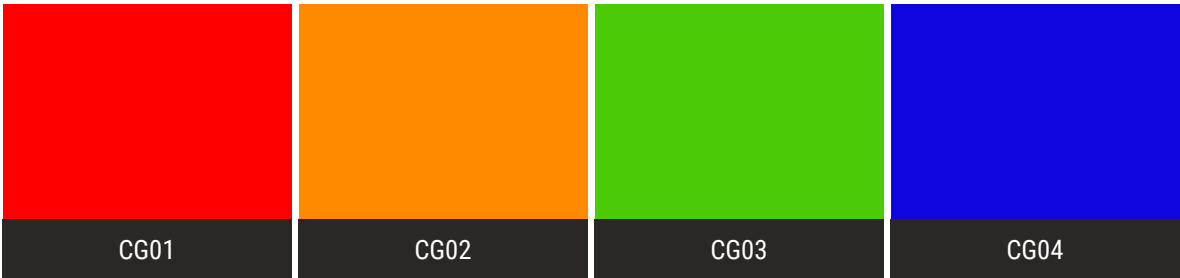
B - VOLTAGE

☐ **120-277V** | Universal Voltage

C - COLOR ACCENTS

Standard diffuser is frosted acrylic. To add a color gel, please choose one of the following:

- ☐ **CG01** | Red Color Gel
- ☐ **CG02** | Orange Color Gel
- ☐ **CG03** | Green Color Gel
- ☐ **CG04** | Blue Color Gel



D - MOTIF ACCENTS \*

- ☐ **FP01** | Square Recessed Lens
- ☐ **FP02** | Square Proud Lens
- ☐ **FP03** | Round Recessed Lens
- ☐ **FP04** | Round Proud Lens

E - OPTIONS

- ☐ **FPL** | Face Plate
- ☐ **LVR** | Louver
- ☐ **EDG** | Edge Lit



## Standard Finishes

The colors shown are representative. Their actual appearance may vary due to differences in display settings. You can request color chips by emailing [contact@spilighting.com](mailto:contact@spilighting.com). Please note, finishes may not be available in all configurations.

### Paint Colors

<b>PT01</b> RAL9003 Signal White (Gloss)	<b>PT51</b> Matte White (Textured)	<b>PT02</b> White (Textured)	<b>PT04</b> RAL9001 Cream (Textured)	<b>PT11</b> Black (Textured)
---	---------------------------------------	---------------------------------	---	---------------------------------

### Brushed Stainless

<b>BSS</b> Brushed Stainless Steel
---------------------------------------

### Metallic Paint Colors

<b>PT22</b> Platinum (Metallic Gloss)	<b>PT48</b> Brass (Metallic Textured)	<b>PT28</b> Dark Stainless (Metallic Gloss)	<b>PT49</b> Bronze (Metallic Textured)	<b>PT32</b> Dark Bronze (Metallic Gloss)
<b>PT46</b> Aluminum (Metallic Textured)				

### Brushed Aluminum

<b>BAL</b> Brushed Aluminum
--------------------------------

## Specialty Finishes



More RAL®, Pantone®, and custom finishes are available upon request. Setup fee and additional lead time applies. Call factory for details.