

# INACTIVE SPEC SHEET

## Echo Round 9.0 LED - Wall

EIW12150 15.10 in

**SPI**LIGHTING

PROJECT DETAILS

JOB NAME:

TYPE:

NOTES:

### DESCRIPTION

---

Echo Round 9.0 LED is designed to address large, high-ceiling spaces such as atriums, gymnasiums, natatoriums, recreation pools, libraries, and open offices. It delivers premium indirect lighting with a smooth, uniform, forward throw output. Echo Round 9.0 LED is designed with a solid aluminum housing, encompassing the latest technology in a traditional shape to seamlessly integrate into the space. For a complimentary lighting layout, contact our applications team at [SPITeam@spilighting.com](mailto:SPITeam@spilighting.com).

### FEATURES & BENEFITS

- Standard top lens corrects color-over-angle discoloration, delivering a clean white beam suitable for highly-finished ceilings and walls
- IP68 light engines, connectors, and fully potted drivers stand up to harsh natatorium environments
- Yoke mountings feature formed aluminum yoke brackets which equip the fixture with durable mounting components that will not rust or corrode
- All visible fasteners are flush mounted, providing a clean design
- Field adjustable housing locks into position, enabling precise fixture alignment for high-quality design performance
- Handcrafted in USA



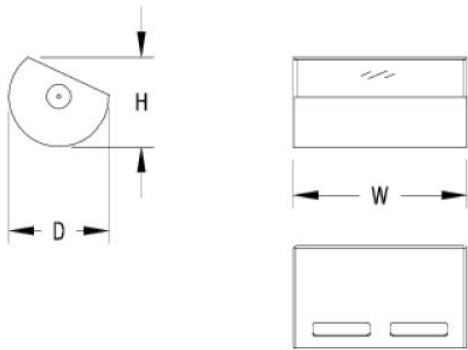
### SPECIFICATIONS

- **LIGHT SOURCE:** White LED light engine
- **ORIENTATION:** For indirect use only
- **CRI:** 80+
- **LUMEN MAINTENANCE:** L70 = >50,000 Hrs.
- **EFFICACY:** Up to 99 lm/W delivered
- **MAX AMBIENT OPERATING TEMP:** 28°C (82°F)
- **CCT:** 3500K or 4000K
- **VOLTAGE:** 120-277V standard
- **DRIVER:** Fully potted integral Class 1 power supply standard
- **DIMMING:** 0-10V controls standard on LED light engines
- **CONTROLS:** Contact factory for control options (e.g., Lutron Athena, Current NX, nLight, Enlighted, Encelium, Wattstopper,

WaveLinx, or Casambi).

- **CONSTRUCTION:** Extruded aluminum construction provides durable protection for internal components and is recyclable; cast aluminum end caps protect internal components and are recyclable
- **FINISH:** Housing and mounting components finished to match. To specify separately, contact factory. Choose from 26 standard thermoset polyester powder coat paint colors. RAL®, Pantone®, or custom finishes available upon request.
- **MODIFICATIONS:** Consult factory for all modification requests
- **APPROVALS:** ETL listed to UL standards (US and Canada) for use in damp locations; not recommended for exterior applications

DIMENSIONS



| W       | H       | D       |
|---------|---------|---------|
| 15.1 in | 7.8 in  | 8.9 in  |
| 38.4 cm | 19.8 cm | 22.6 cm |

**Mounting Weight**  
Approximate: 15 lb (7 kg)

CONFIGURATOR

To configure your spec sheet online, go to [www.spilighting.com/EIW12150](http://www.spilighting.com/EIW12150). Not all options are available in all configurations; consult factory for details.

Required Field \*

|          |               |                 |          |               |           |             |         |
|----------|---------------|-----------------|----------|---------------|-----------|-------------|---------|
| Catalog  | Light Source* | Primary Finish* | Voltage* | Lamp Options* | Mounting* | Accessories | Options |
| EIW12150 |               |                 |          |               |           |             |         |
|          | A             |                 | B        | C             | D         | E           | F       |

A - LIGHT SOURCE \*

To ensure color consistency, SPI uses precise bin selection and strict quality processes to maintain a 3-step (MacAdam) SDCM on all white LED lampings. Published LED luminaire wattages are calculated using a typical power supply efficiency of 88%; exact wattages may vary based on application.

☐ **L127W** | White 127W LED Light Engine

See last page for finish options

B - VOLTAGE \*

☐ 120-277V | Universal Voltage

C - LAMP OPTIONS \*

Delivered lumens shown are at 4000K CCT; apply multiplier for delivered lumens at other CCT.

- ☐ 3500K <sup>1</sup> | 3500K CCT
- ☐ 4000K | 4000K CCT

<sup>1</sup> Apply .91 multiplier for delivered lumens

D - MOUNTING \*

Hub and Horizontal mounts use a hub canopy at each end to mount over a standard 4" octagonal junction box, auxiliary mounting holes are provided. Yoke mount features a yoke bracket that runs the full length of the fixture, the 4" octagonal junction box cover is centered on the yoke with auxiliary mounting holes. INSTALLATION NOTES: During installation the contractor is responsible to use actual fixtures to ensure accurate mounting centers from one fixture to the next along the length of the linear run. Choose a mounting from below:

- ☐ HUB | Hub Mount
- ☐ HZT | Horizontal Mount
- ☐ YOK | Yoke Mount

| <table><tr><th>D</th><th>H1</th><th>H2</th></tr><tr><td>9.4 in</td><td>6.5 in</td><td>7.8 in</td></tr><tr><td>23.9 cm</td><td>16.5 cm</td><td>19.8 cm</td></tr><tr><th>MC</th><th>W</th><td></td></tr><tr><td>17.3 in</td><td>23.8 in</td><td></td></tr><tr><td>19.8 cm</td><td>60.5 cm</td><td></td></tr></table> | D       | H1      | H2 | 9.4 in | 6.5 in | 7.8 in | 23.9 cm | 16.5 cm | 19.8 cm | MC | W |  | 17.3 in | 23.8 in |  | 19.8 cm | 60.5 cm |  | <table><tr><th>H1</th><th>H2</th><th>MC</th></tr><tr><td>6.0 in</td><td>7.8 in</td><td>17.5 in</td></tr><tr><td>15.2 cm</td><td>19.8 cm</td><td>44.4 cm</td></tr><tr><th>OAP</th><th>W</th><td></td></tr><tr><td>22.5 in</td><td>22.5 in</td><td></td></tr><tr><td>57.2 cm</td><td>57.2 cm</td><td></td></tr></table> | H1 | H2 | MC | 6.0 in | 7.8 in | 17.5 in | 15.2 cm | 19.8 cm | 44.4 cm | OAP | W |  | 22.5 in | 22.5 in |  | 57.2 cm | 57.2 cm |  | <table><tr><th>D</th><th>H1</th><th>H2</th></tr><tr><td>10.1 in</td><td>4.2 in</td><td>7.8 in</td></tr><tr><td>25.7 cm</td><td>10.7 cm</td><td>19.8 cm</td></tr><tr><th>MC</th><th>W</th><td></td></tr><tr><td>7.9 in</td><td>15.7 in</td><td></td></tr><tr><td>20.1 cm</td><td>39.9 cm</td><td></td></tr></table> | D | H1 | H2 | 10.1 in | 4.2 in | 7.8 in | 25.7 cm | 10.7 cm | 19.8 cm | MC | W |  | 7.9 in | 15.7 in |  | 20.1 cm | 39.9 cm |  |
|--|---------|---------|----|--------|--------|--------|---------|---------|---------|----|---|--|---------|---------|--|---------|---------|--|---|----|----|----|--------|--------|---------|---------|---------|---------|-----|---|--|---------|---------|--|---------|---------|--|--|---|----|----|---------|--------|--------|---------|---------|---------|----|---|--|--------|---------|--|---------|---------|--|
| D  | H1      | H2      |    |        |        |        |         |         |         |    |   |  |         |         |  |         |         |  |   |    |    |    |        |        |         |         |         |         |     |   |  |         |         |  |         |         |  |  |   |    |    |         |        |        |         |         |         |    |   |  |        |         |  |         |         |  |
| 9.4 in   | 6.5 in  | 7.8 in  |    |        |        |        |         |         |         |    |   |  |         |         |  |         |         |  |   |    |    |    |        |        |         |         |         |         |     |   |  |         |         |  |         |         |  |  |   |    |    |         |        |        |         |         |         |    |   |  |        |         |  |         |         |  |
| 23.9 cm  | 16.5 cm | 19.8 cm |    |        |        |        |         |         |         |    |   |  |         |         |  |         |         |  |   |    |    |    |        |        |         |         |         |         |     |   |  |         |         |  |         |         |  |  |   |    |    |         |        |        |         |         |         |    |   |  |        |         |  |         |         |  |
| MC   | W       |         |    |        |        |        |         |         |         |    |   |  |         |         |  |         |         |  |   |    |    |    |        |        |         |         |         |         |     |   |  |         |         |  |         |         |  |  |   |    |    |         |        |        |         |         |         |    |   |  |        |         |  |         |         |  |
| 17.3 in  | 23.8 in |         |    |        |        |        |         |         |         |    |   |  |         |         |  |         |         |  |   |    |    |    |        |        |         |         |         |         |     |   |  |         |         |  |         |         |  |  |   |    |    |         |        |        |         |         |         |    |   |  |        |         |  |         |         |  |
| 19.8 cm  | 60.5 cm |         |    |        |        |        |         |         |         |    |   |  |         |         |  |         |         |  |   |    |    |    |        |        |         |         |         |         |     |   |  |         |         |  |         |         |  |  |   |    |    |         |        |        |         |         |         |    |   |  |        |         |  |         |         |  |
| H1   | H2      | MC      |    |        |        |        |         |         |         |    |   |  |         |         |  |         |         |  |   |    |    |    |        |        |         |         |         |         |     |   |  |         |         |  |         |         |  |  |   |    |    |         |        |        |         |         |         |    |   |  |        |         |  |         |         |  |
| 6.0 in   | 7.8 in  | 17.5 in |    |        |        |        |         |         |         |    |   |  |         |         |  |         |         |  |   |    |    |    |        |        |         |         |         |         |     |   |  |         |         |  |         |         |  |  |   |    |    |         |        |        |         |         |         |    |   |  |        |         |  |         |         |  |
| 15.2 cm  | 19.8 cm | 44.4 cm |    |        |        |        |         |         |         |    |   |  |         |         |  |         |         |  |   |    |    |    |        |        |         |         |         |         |     |   |  |         |         |  |         |         |  |  |   |    |    |         |        |        |         |         |         |    |   |  |        |         |  |         |         |  |
| OAP  | W       |         |    |        |        |        |         |         |         |    |   |  |         |         |  |         |         |  |   |    |    |    |        |        |         |         |         |         |     |   |  |         |         |  |         |         |  |  |   |    |    |         |        |        |         |         |         |    |   |  |        |         |  |         |         |  |
| 22.5 in  | 22.5 in |         |    |        |        |        |         |         |         |    |   |  |         |         |  |         |         |  |   |    |    |    |        |        |         |         |         |         |     |   |  |         |         |  |         |         |  |  |   |    |    |         |        |        |         |         |         |    |   |  |        |         |  |         |         |  |
| 57.2 cm  | 57.2 cm |         |    |        |        |        |         |         |         |    |   |  |         |         |  |         |         |  |   |    |    |    |        |        |         |         |         |         |     |   |  |         |         |  |         |         |  |  |   |    |    |         |        |        |         |         |         |    |   |  |        |         |  |         |         |  |
| D  | H1      | H2      |    |        |        |        |         |         |         |    |   |  |         |         |  |         |         |  |   |    |    |    |        |        |         |         |         |         |     |   |  |         |         |  |         |         |  |  |   |    |    |         |        |        |         |         |         |    |   |  |        |         |  |         |         |  |
| 10.1 in  | 4.2 in  | 7.8 in  |    |        |        |        |         |         |         |    |   |  |         |         |  |         |         |  |   |    |    |    |        |        |         |         |         |         |     |   |  |         |         |  |         |         |  |  |   |    |    |         |        |        |         |         |         |    |   |  |        |         |  |         |         |  |
| 25.7 cm  | 10.7 cm | 19.8 cm |    |        |        |        |         |         |         |    |   |  |         |         |  |         |         |  |   |    |    |    |        |        |         |         |         |         |     |   |  |         |         |  |         |         |  |  |   |    |    |         |        |        |         |         |         |    |   |  |        |         |  |         |         |  |
| MC   | W       |         |    |        |        |        |         |         |         |    |   |  |         |         |  |         |         |  |   |    |    |    |        |        |         |         |         |         |     |   |  |         |         |  |         |         |  |  |   |    |    |         |        |        |         |         |         |    |   |  |        |         |  |         |         |  |
| 7.9 in   | 15.7 in |         |    |        |        |        |         |         |         |    |   |  |         |         |  |         |         |  |   |    |    |    |        |        |         |         |         |         |     |   |  |         |         |  |         |         |  |  |   |    |    |         |        |        |         |         |         |    |   |  |        |         |  |         |         |  |
| 20.1 cm  | 39.9 cm |         |    |        |        |        |         |         |         |    |   |  |         |         |  |         |         |  |   |    |    |    |        |        |         |         |         |         |     |   |  |         |         |  |         |         |  |  |   |    |    |         |        |        |         |         |         |    |   |  |        |         |  |         |         |  |
| HUB  | HZT     | YOK     |    |        |        |        |         |         |         |    |   |  |         |         |  |         |         |  |   |    |    |    |        |        |         |         |         |         |     |   |  |         |         |  |         |         |  |  |   |    |    |         |        |        |         |         |         |    |   |  |        |         |  |         |         |  |

E - ACCESSORIES

Cut-Off Shield painted to match housing.

☐ CS | Cut-Off Shield



**F - OPTIONS**

☐ F | Fusing

## Standard Finishes

The colors shown are representative. Their actual appearance may vary due to differences in display settings. You can request color chips by emailing [contact@spilighting.com](mailto:contact@spilighting.com). Please note, finishes may not be available in all configurations.

### Paint Colors

|   |                                       |                                 |   |                                 |
|---|---------------------------------------|---------------------------------|---|---------------------------------|
| <b>PT01</b><br>RAL9003 Signal White (Gloss) | <b>PT51</b><br>Matte White (Textured) | <b>PT02</b><br>White (Textured) | <b>PT04</b><br>RAL9001 Cream (Textured) | <b>PT11</b><br>Black (Textured) |
|---|---------------------------------------|---------------------------------|---|---------------------------------|

### Metallic Paint Colors

|   |  |  |   |   |
|---|--|--|---|---|
| <b>PT22</b><br>Platinum (Metallic Gloss)    | <b>PT48</b><br>Brass (Metallic Textured) | <b>PT28</b><br>Dark Stainless (Metallic Gloss) | <b>PT49</b><br>Bronze (Metallic Textured) | <b>PT32</b><br>Dark Bronze (Metallic Gloss) |
| <b>PT46</b><br>Aluminum (Metallic Textured) |  |  |   |   |

## Specialty Finishes



More RAL®, Pantone®, and custom finishes are available upon request. Setup fee and additional lead time applies. Call factory for details.