

SPI LIGHTING ECHO ROUND 9.0



THE BASICS

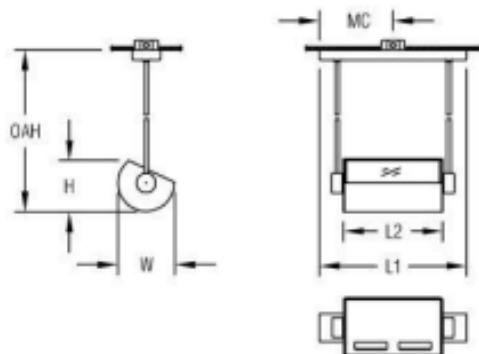
- Rounded geometry blends naturally with architecture
- Hides direct view of the light source, improving visual comfort and mitigating glare

| | |
|--------------------------|-----------------------------------|
| Light Source | White LED light engine |
| Distributions | Indirect |
| Voltage | 120-277V Standard |
| Efficacy | Up to 131 lm/W delivered |
| CRI | 80+, 90+ |
| CCT | 2700K, 3000K, 3500K, 4000K, 5000K |
| Lumen Maintenance | L90 = >72,000 Hrs. |
| Finishes | 26 powder coat colors |



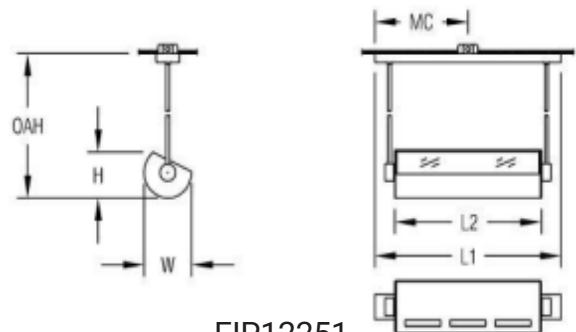
ECHO ROUND 9.0

W - 8.9 in | L1 - 22.5 in | L2 - 15.1 in
H - 7.8 in | OAH - 80 in | MC - 11.3 in



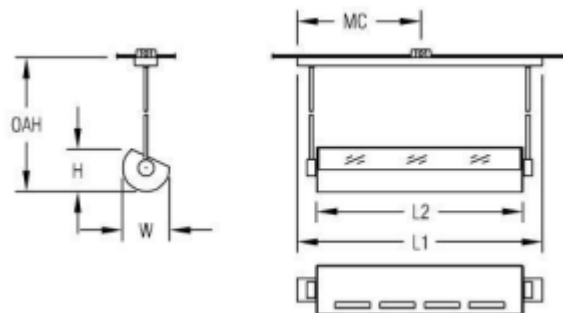
EIP12250

W - 8.9 in | L1 - 34.1 in | L2 - 26.8 in
H - 7.8 in | OAH - 80 in | MC - 17.1 in



EIP12251

W - 8.9 in | L1 - 45.5 in | L2 - 38.2 in
H - 7.8 in | OAH - 80 in | MC - 22.8 in



EIP12252

LUMEN DATA

| Catalog ID | Size | Wattage | Delivered Lumens |
|------------|-------|---------|------------------|
| EIP12250 | 15.1" | 108 | 14,094 |
| EIP12251 | 26.8" | 216 | 28,188 |
| EIP12252 | 38.2" | 325 | 42,413 |