

SPI LIGHTING LIGHTRUSS RAIL

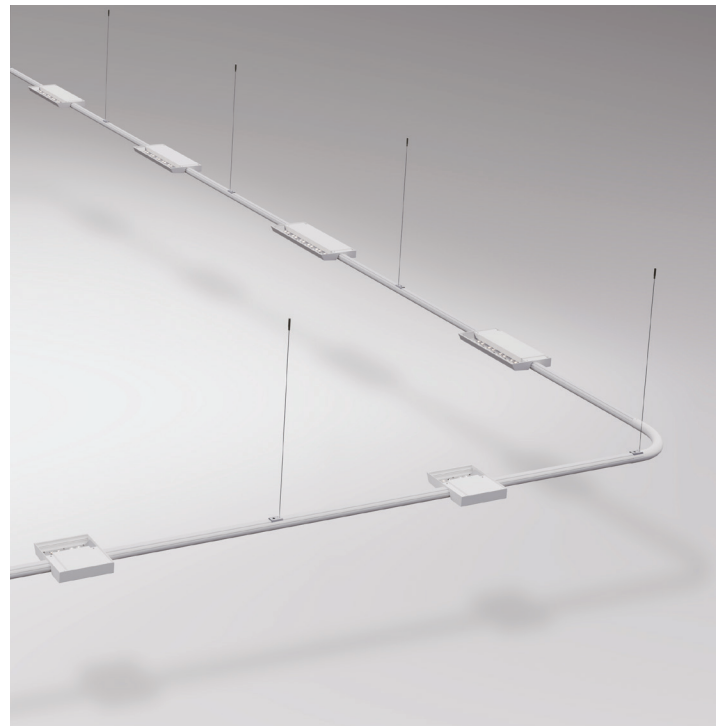
True Asymmetric Optics | Full Horizontal Cutoff | 2.3" Profile



THE BASICS

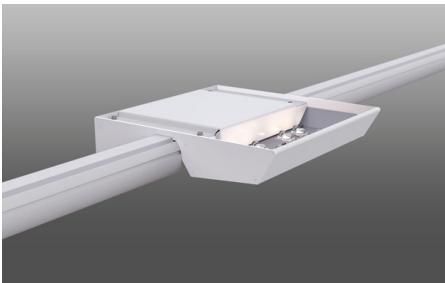
- The rail system reduces the number of power drops and the amount of conduit needed, simplifying installation
- Lumen packages up to 26,978 lumens
- Fully engineered for natatorium environments

Light Source	White LED light engine
Distributions	Direct and Indirect
Voltage	120-277V Standard
Efficacy	Up to 130lm/W delivered
CRI	80+, 90+
CCT	2700K, 3000K, 3500K, 4000K, 5000K
Lumen Maintenance	L70 = >50,000 Hrs.
Finishes	26 powder coat colors

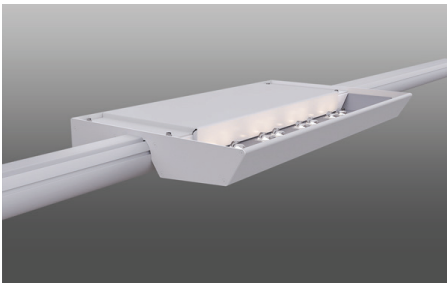


LIGHTRUSS RAIL

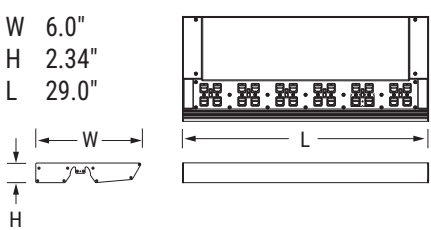
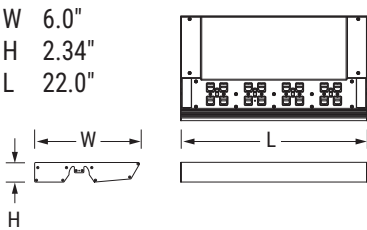
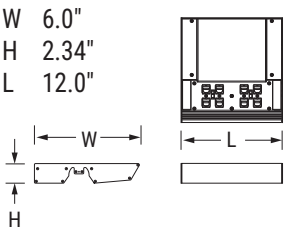
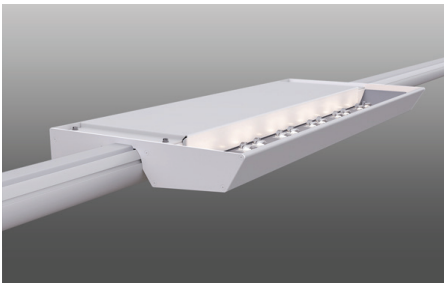
LRU12465



LRU12466



LRU12467



LUMEN DATA

Catalog ID	Direct/Indirect	Size	Wattage	Delivered Lumens
LRU12465	Indirect	12"	72	9129
LRU12466	Indirect	22"	144	18259
LRU12467	Indirect	29"	216	26978

