

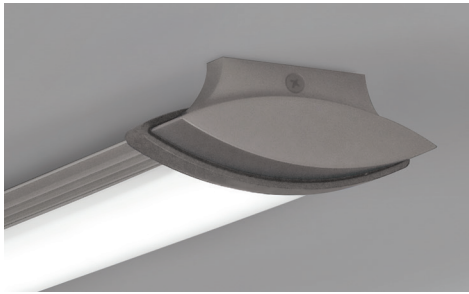
SECT Tryg Exterior Linear LED

Surface Mount/Suspended

Remote Power Supply

JOB NAME _____

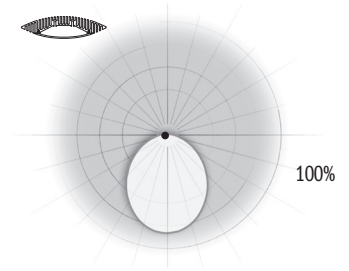
TYPE _____



Tryg Exterior Linear LED

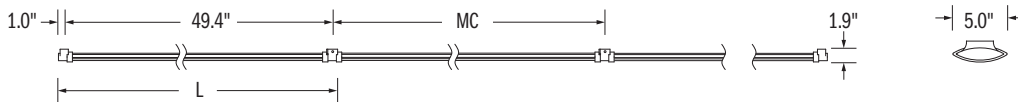
Tryg, a low-profile LED fixture offers a unique design and durability suitable for any project. LEDs enable this luminaire to feature a low-profile housing, while its creative design acts as an efficient heat sink, maximizing output and life by allowing the LEDs to operate at an optimal temperature.

Optical Distribution

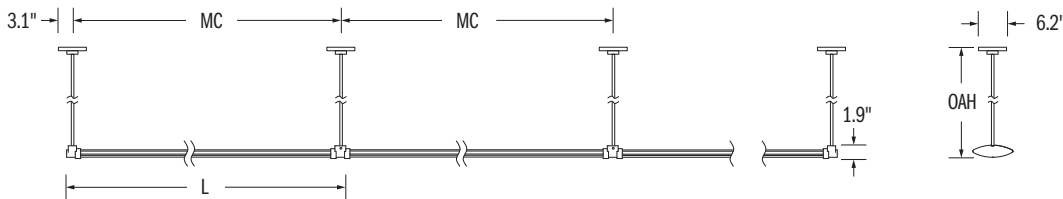


Run Sections and Suspension

FBK Fixed Bracket Mount



CWS Canopy and Stem



Dimensions

MODULE	MOUNTING CENTER	LENGTH
050	50.0"	51.3"

Specifications

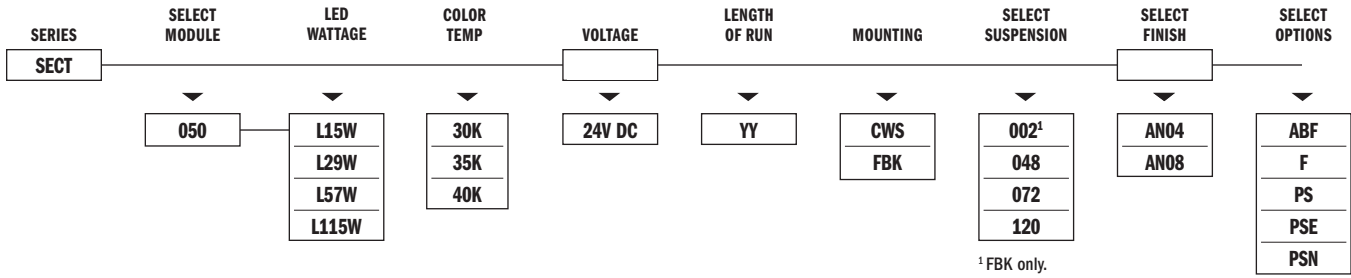
- IP66 rated fixture per International Electrotechnical Commission (IEC) certifies fixture as dust tight and protected against power water jets.
- Available in anodized finishes with some parts painted to match. Anodized finish provides optimal thermal effectiveness and durable corrosion protection.
- CA01 available to specify a Color Accent for the narrow band between end cap and extrusion.
- Each module requires connection to a 24V constant voltage power supply. Modules over 60W may require multiple power supplies/feeds.

- SPI Lighting uses strict guidelines in LED selection to ensure the white LEDs we use meet or exceed ANSI Binning Standards (ANSI C78.377).
- Black power cord standard unless otherwise specified.
- **RELATED LINKS:**
[LED Power Supplies \(24V DC\)](#)
["Designed to be LED"](#)

Technical Notes

- **INSTALLATION NOTES:** During installation the contractor is responsible to use actual fixtures to ensure accurate mounting centers from one fixture to the next along the length of the linear run.
- ETL listed to UL standards (US and Canada) for use in wet locations.
- Remote Class II Power Supply required with LED lamping.
- Max distance to the driver is 15'. For extended distances, contact factory.





Delivered Lumens

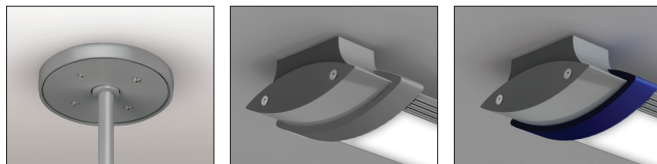
050			
L15W	L29W	L57W	L115W
1232	2381	4680	9442

Delivered lumens are shown at 4000 CCT; apply multiplier for delivered lumens at other CCT.

CCT	Proration Factor
4000K	1.0
3500K	0.97
3000K	0.95

Mountings and Options

Painted to match



CWS FBK CA01 (Shown with PT33)

Code Definitions

MOUNTING	FINISHES <i>(See Color Chart for Details)</i>	OPTIONS
FBK Fixed Bracket	AN04 Anodized Aluminum (Clear)	CA01 Color Accent (painted)
CWS 6.2" Canopy & Stem	AN08 Black Anodized	F Fusing
		PS Remote Power Supply
		PSE Power Supply Enclosure
		PSN No Power Supply