

Mounting Options

Beam Linear

Suspended - Remote Power Supply

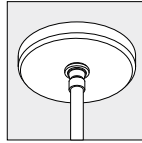
JOB NAME

TYPE

CAS - For Non-Accessible Ceilings

5" Canopy and Stem

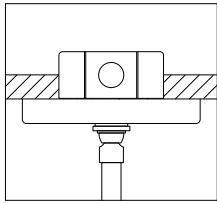
- Remote Ballast and Power Supply
- Canopy and stem painted to match the fixture
- 5" canopy covers standard 4" octagonal j-box (by others)
- 15° swivel



Detail View

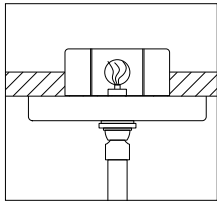
NON POWER

- Mounts to standard 4" octagonal j-box (by others)
- Suitable blocking required (by others)



POWER

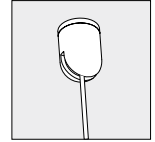
- Mounts to standard 4" octagonal j-box (by others)
- Suitable blocking required (by others)
- Power wires concealed inside stem



BUL - For Non-Accessible Ceilings

.6" x .8" Ceiling Coupler

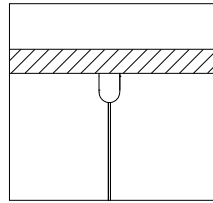
- Remote Ballast and Power Supply
- Chrome plated ceiling coupler is .6" in diameter and is .8" high
- Mounts to most surfaces and materials
- Mountable on any sloped ceiling or even walls with 0-90° mounting ability



Detail View

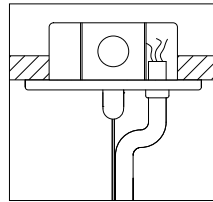
NON POWER

- Mounts to structure with appropriate #8 flathead screw by others or over a 1/4-20 stud by others. Suitable blocking required (by others)
- Braided aircraft cable provides full vertical field adjustment at the fixture
- Does not require j-box for mounting



POWER

- Mounts to supported 4" octagonal j-box (by others) with crossbar and ceiling coupler
- Braided aircraft cable provides full vertical field adjustment at the fixture
- 5" canopy is .2" high and white unless otherwise specified
- The power feed will ship in the hardware bag, so you can install where necessary

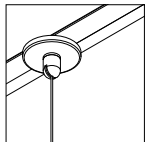


White power cord and canopy supplied unless otherwise specified.

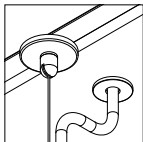
Black power cord and canopy

MCA - For Non-Accessible Ceilings

2" Mini Canopy and Aircraft Cable with T-Bar Clip



Non Power: Detail View

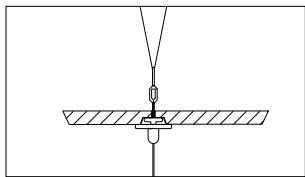


Power: Detail View

- Remote Ballast and Power Supply
- Chrome plated coupler is .6" in diameter and is .8" high
- Coupler mounts over a 1/4 -20 stud
- 2" canopy and is .2" high
- Canopy keeps T-bar clip concealed and is white unless otherwise specified

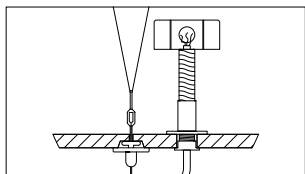
NON POWER

- Mounts to most T-bar grids with standard T-bar clips. Tie back to suitable blocking required (by others)
- Does not require j-box for mounting



POWER

- Mounts to most T-bar grids with T-bar clips. Tie back to suitable blocking required (by others)
- Escutcheon on PCC assembly is 1.4" diameter and .1" high on room side
- Escutcheon is painted white unless otherwise specified
- PCC assembly connects to conduit (by others) with a 3/4" conduit fitting (by others) to provide containment through ceiling to j-box (by others) connections
- Does not require j-box for mounting.
- The power feed will ship in the hardware bag, so that you can install where necessary



Type 1



Type 2

White power cord and canopy supplied unless otherwise specified.

Black power cord and canopy

Mounting Options

Beam Linear

Suspended - Remote Power Supply

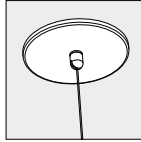
JOB NAME

TYPE

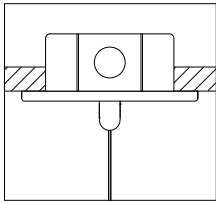
CAA - For Non-Accessible Ceilings

5" Canopy and Aircraft Cable

- Remote Ballast and Power Supply
- Chrome plated ceiling coupler is .6" in diameter and is .8" high and white unless otherwise specified
- Mountable on any sloped ceilings or even wall with 0-90° mounting ability
- 5" canopy is .2" high and white unless otherwise specified

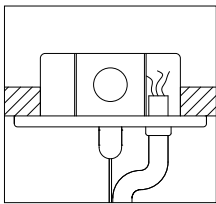


Detail View



NON POWER

- Mounts to supported 4" octagonal j-box (by others) with crossbar and ceiling coupler
- Braided aircraft cable provides full vertical field adjustment at the fixture



POWER

- Mounts to supported 4" octagonal j-box (by others) with crossbar and ceiling coupler
- Braided aircraft cable provides full vertical field adjustment at the fixture
- The power feed will ship in the hardware bag, so that you can install where necessary

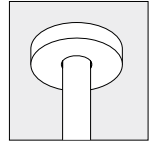
White power cord and canopy supplied unless otherwise specified.

Black power cord and canopy

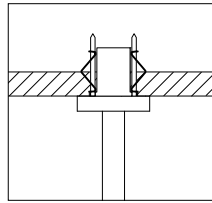
ICS - For Non-Accessible Walls

1.4" Mini Canopy and Stem

- Remote Ballast and Power Supply
- Canopy and stem painted to match the fixture
- 1.4" canopy keeps mount hub and fasteners concealed
- Mounts to most surfaces and materials

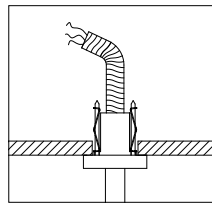


Detail View



NON POWER

- Mounts to structure with butterfly clips and screws provided
- Does not require j-box for mounting



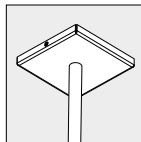
POWER

- Mounts to structure with butterfly clips and screws provided
- Does not require j-box for mounting
- Supplied with six feet of power cord inside flexible metal conduit to allow j-box connection (by others) to be done in an accessible place

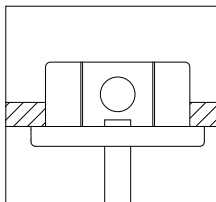
LBC - For Non-Accessible Walls

4" Octagonal J-Box Cover

- Remote Ballast and Power Supply
- Cover and stem painted to match the fixture
- Mounts over 4" octagonal j-box (by others)

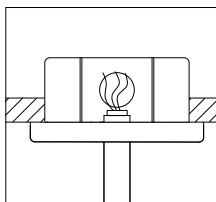


Detail View



NON POWER

- Mounts to standard 4" octagonal j-box (by others)



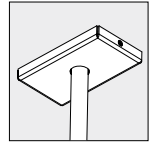
POWER

- Mounts to standard 4" octagonal j-box (by others)
- Supplied with 8" of lead wires

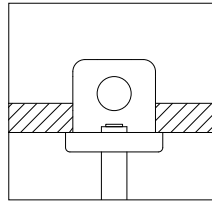
SBC - For Non-Accessible Walls

Switch-Box Cover

- Remote Ballast and Power Supply
- Cover and stem painted to match fixture
- Brackets can mount to horizontal or vertical surfaces
- Mounts to standard handy box
- Rotational adjustment is locked in with one screw in each hub

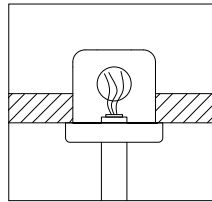


Detail View



NON POWER

- Mounts to structure with butterfly clips and screws provided.
- Does not require j-box for mounting



POWER

- Mounts over horizontal or vertical handy box (by others)
- Supplied with 8" of lead wire