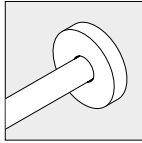


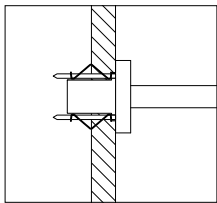
ICS - For Non-Accessible Walls

1.4" Mini Canopy and Stem

- Remote Ballast and Power Supply
- Canopy and stem painted to match the fixture
- 1.4" canopy keeps mount hub and fasteners concealed
- Mounts to most surfaces and materials

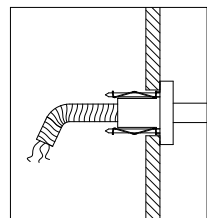


Detail View



NON POWER

- Mounts to structure with butterfly clips and screws provided
- Does not require j-box for mounting



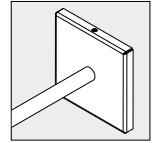
POWER

- Mounts to structure with butterfly clips and screws provided
- Does not require j-box for mounting
- Supplied with six feet of power cord inside flexible metal conduit to allow j-box connection (by others) to be done in an accessible place

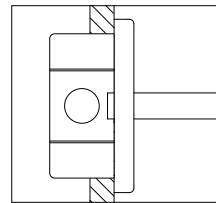
LBC - For Non-Accessible Walls

4" Octagonal J-Box Cover

- Remote Ballast and Power Supply
- Cover and stem painted to match the fixture
- Mounts over 4" octagonal j-box (by others)

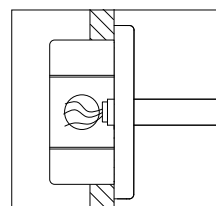


Detail View



NON POWER

- Mounts to standard 4" octagonal j-box (by others)



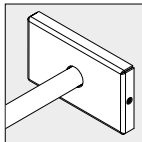
POWER

- Mounts to standard 4" octagonal j-box (by others)
- Supplied with 8" of lead wires

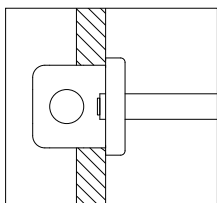
SBC - For Non-Accessible Walls

Switch-Box Cover

- Remote Ballast and Power Supply
- Cover and stem painted to match fixture
- Brackets can mount to horizontal or vertical surfaces
- Mounts to standard handy box
- Rotational adjustment is locked in with one screw in each hub

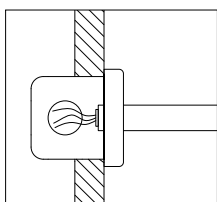


Detail View



NON POWER

- Mounts over horizontal or vertical switch box (by others)
- Does not require j-box for mounting



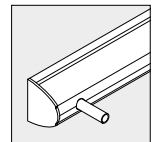
POWER

- Mounts over horizontal or vertical handy box (by others)
- Supplied with 8" of lead wire

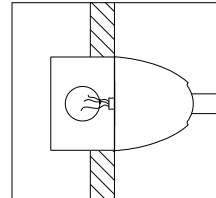
SMT (Fluorescent Only) - For Non-Accessible Walls

Surface Mount

- Integral Ballast and Power Supply
- Mounting painted to match the fixture



Detail View



POWER

- Mounts over a horizontal switch box (by others)
- Suitable blocking required (by others)
- Power wires exit middle of the fixture

Mounting Options

Beam Linear

Wall

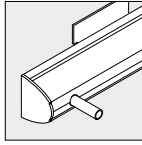
JOB NAME _____

TYPE _____

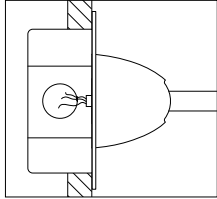
SJB - For Non-Accessible Walls

Surface Mount with Standard J-Box Cover

- Surface mount and cover painted to match the fixture



Detail View



POWER

- Mounts over a 4" jbox (by others)
- Suitable blocking required (by others)
- Power wires exit middle of fixture