

# IMPORTANT SAFETY AND INSTALLATION INSTRUCTIONS

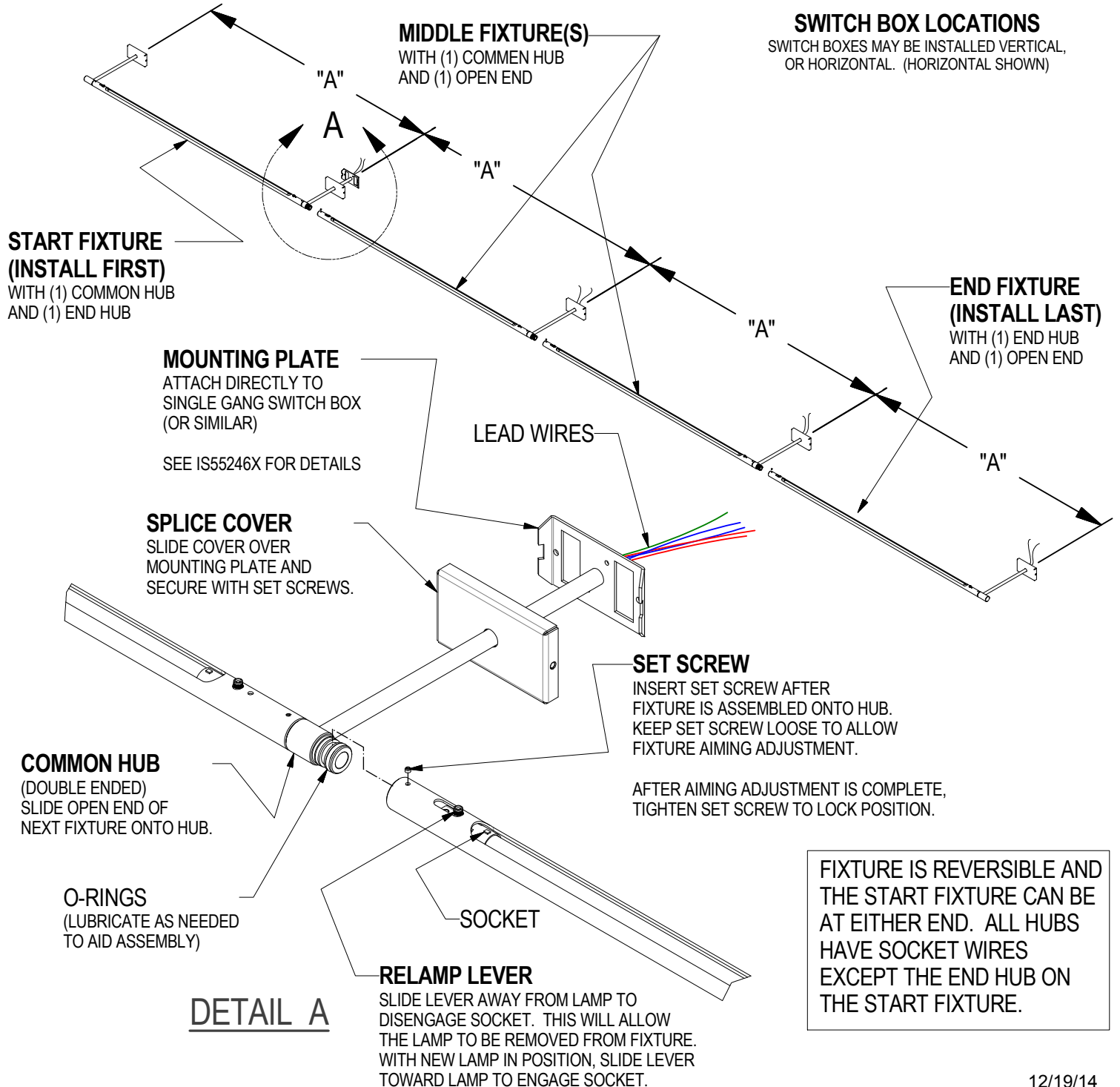
**WARNING:** Risk of fire and electrical shock. This product is to be installed by a qualified electrician only.

**CAUTION:** When using electrical equipment, basic safety precautions should always be followed including the following: Read all instructions carefully before installation and save

for future use. Make sure installation and all connections are in accordance with National Electrical Code and any local regulations. To avoid possible electrical shock, be sure that power supply is turned off before installing or servicing this fixture. Servicing should be performed by qualified service personnel.

These instructions do not claim to cover all details or variations. When additional information is desired, please contact your SPI representative.

## BEAM - LINEAR MOUNT



### SWITCH BOX LOCATIONS

SWITCH BOXES MAY BE INSTALLED VERTICAL, OR HORIZONTAL. (HORIZONTAL SHOWN)

**START FIXTURE (INSTALL FIRST)**  
WITH (1) COMMON HUB  
AND (1) END HUB

**MIDDLE FIXTURE(S)**  
WITH (1) COMMON HUB  
AND (1) OPEN END

**END FIXTURE (INSTALL LAST)**  
WITH (1) END HUB  
AND (1) OPEN END

**MOUNTING PLATE**  
ATTACH DIRECTLY TO  
SINGLE GANG SWITCH BOX  
(OR SIMILAR)

SEE IS55246X FOR DETAILS

**SPLICE COVER**  
SLIDE COVER OVER  
MOUNTING PLATE AND  
SECURE WITH SET SCREWS.

LEAD WIRES

### SET SCREW

INSERT SET SCREW AFTER  
FIXTURE IS ASSEMBLED ONTO HUB.  
KEEP SET SCREW LOOSE TO ALLOW  
FIXTURE AIMING ADJUSTMENT.

AFTER AIMING ADJUSTMENT IS COMPLETE,  
TIGHTEN SET SCREW TO LOCK POSITION.

**COMMON HUB (DOUBLE ENDED)**  
SLIDE OPEN END OF  
NEXT FIXTURE ONTO HUB.

**O-RINGS**  
(LUBRICATE AS NEEDED  
TO AID ASSEMBLY)

SOCKET

### RELAMP LEVER

SLIDE LEVER AWAY FROM LAMP TO  
DISENGAGE SOCKET. THIS WILL ALLOW  
THE LAMP TO BE REMOVED FROM FIXTURE.  
WITH NEW LAMP IN POSITION, SLIDE LEVER  
TOWARD LAMP TO ENGAGE SOCKET.

**DETAIL A**

FIXTURE IS REVERSIBLE AND  
THE START FIXTURE CAN BE  
AT EITHER END. ALL HUBS  
HAVE SOCKET WIRES  
EXCEPT THE END HUB ON  
THE START FIXTURE.

12/19/14

IS59160X