

Zynn 3" Lines - Wet Location

AES12443 3.00 in | Flange

JOB NAME:

TYPE:

NOTES:

DESCRIPTION

TRIM FLANGE MOUNT: Engineered for vertical and horizontal mounting, our IP66 recessed wall & ceiling fixture has unique fully luminous 90-degree corners, uniform illumination, no visible hardware, and is designed to withstand prolonged moisture exposure, extreme heat, and the bitter cold. The Zynn 3" Lines - Wet Location is the perfect fixture for building facades, awnings, and natatorium applications; and is one of the most versatile wet location linear products on the market.

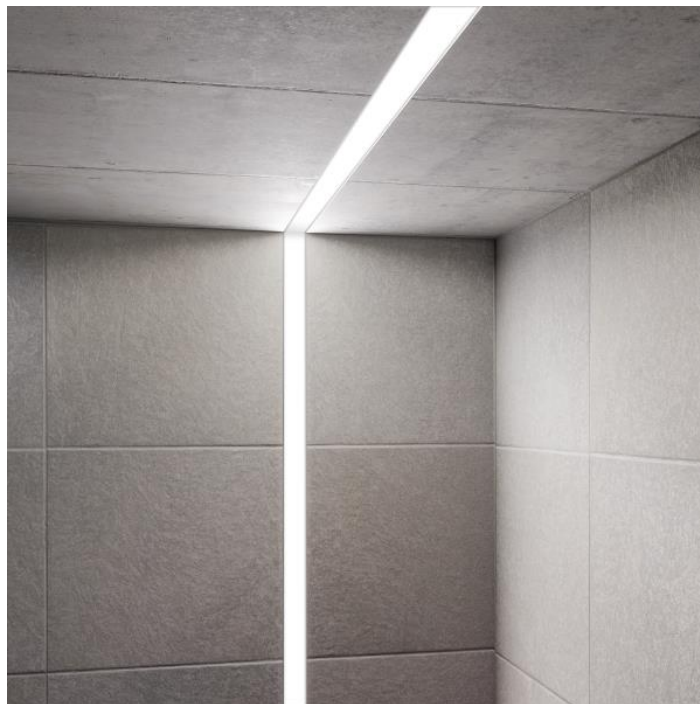
TRIM FLANGE MOUNT

FEATURES & BENEFITS

- IP66 Recessed Wall & Ceiling
- Vertical & Horizontal Mount
- Fully luminous 90-degree corners
- No visible fasteners
- Mount individually or create continuous lines of light
- Natatorium construction
- Uniform illumination, no visible shadowing or view of diodes
- Acrylic diffuser resists yellowing
- Handcrafted in USA, BABA Compliant

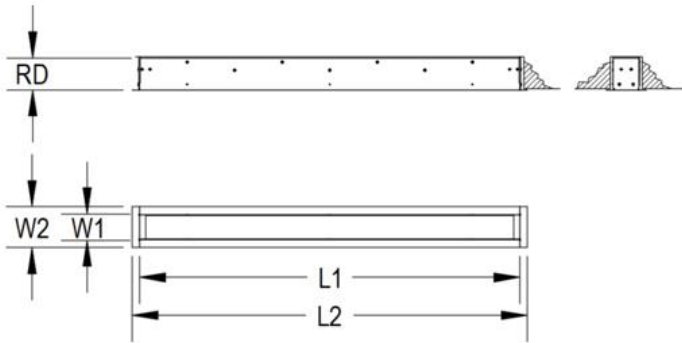
SPECIFICATIONS

- **LIGHT SOURCE:** White LED light engine
- **CRI:** 80+ or 90+
- **INGRESS PROTECTION:** IP66
- **LUMEN MAINTENANCE:** L70 = >50,000 Hrs.
- **EFFICACY:** 86 lm/W delivered
- **CCT:** 2700K, 3000K, 3500K, 4000K, or 5000K
- **VOLTAGE:** 120-277V standard
- **DRIVER:** Integral Class 2 power supply
- **DIMMING:** 0-10V controls standard to 1% on LED light engines
- **CONTROLS:** Contact factory for control options (e.g., Lutron Athena, Current NX, nLight, Enlighted, Encelium, Wattstopper, WaveLinx, or Casambi)
- **MAX AMBIENT OPERATING TEMP:** 50°C (122°F)



- **MIN AMBIENT OPERATING TEMP:** -20°C (-4°F)
- **INTEGRATED SURGE PROTECTION:** LED components are protected against minor surge events
- **DIFFUSER:** Diffused acrylic
- **CONSTRUCTION:** 2', 3', and 4' lengths have a seamless housing and diffuser. 6' and 8' lengths are fabricated with a two-part modular light engine and have a seamless diffuser and housing. Housing fabricated from aluminum. Corrosion resistant fasteners.
- **FINISH:** Housing is finished to your specification. Choose from 26 standard thermoset polyester powder coat paint colors. RAL®, Pantone®, or custom finishes available upon request.
- **MODIFICATIONS:** Consult factory for all modification requests, including alternate lengths or remote drivers
- **APPROVALS:** ETL listed to UL standards (US & Canada) for use in wet locations. Not rated for Insulation Contact.

DIMENSIONS



2FT	L1	L2	RD	W1	W2
	24 in 61 cm	26 in 66 cm	4 in 10.2 cm	3.2 in 8.1 cm	5.1 in 13 cm

Mounting Weight: Approximate: 10 lb (5 kg)

3FT	L1	L2	RD	W1	W2
	36 in 91.4 cm	38 in 96.5 cm	4 in 10.2 cm	3.2 in 8.1 cm	5.1 in 13 cm

Mounting Weight: Approximate: 13 lb (6 kg)

4FT	L1	L2	RD	W1	W2
	48 in 121.9 cm	50 in 127 cm	4 in 10.2 cm	3.2 in 8.1 cm	5.1 in 13 cm

Mounting Weight: Approximate: 15 lb (7 kg)

6FT	L1	L2	RD	W1	W2
	72 in 182.9 cm	74 in 188 cm	4 in 10.2 cm	3.2 in 8.1 cm	5.1 in 13 cm

Mounting Weight: Approximate: 26 lb (12 kg)

8FT	L1	L2	RD	W1	W2
	96 in 243.8 cm	98 in 248.9 cm	4 in 10.2 cm	3.2 in 8.1 cm	5.1 in 13 cm

Mounting Weight: Approximate: 30 lb (14 kg)

CONFIGURATOR

To configure your spec sheet online, go to www.spilighting.com/AES12443. Not all options are available in all configurations; consult factory for details.

Required Field *

Catalog	Light Source*	Primary Finish*	Voltage	Lamp Options	CRI	Mounting	Linear Run	Options
AES12443								
	A		B	C	D	E	F	G

A - LIGHT SOURCE *

To ensure color consistency, SPI uses precise bin selection and strict quality processes to maintain a 3-step (MacAdam) SDCM on all white LED lampings. Published LED luminaire wattages are calculated using a typical power supply efficiency of 88%; exact wattages may vary based on application. Alternative wattages available upon request.

2 FOOT NOMINAL FIXTURE

- 2FT-L14W** | White 14W LED Light Engine | Delivered Lumens: 1,204
- 2FT-L28W** | White 28W LED Light Engine | Delivered Lumens: 2,408

3 FOOT NOMINAL FIXTURE

- 3FT-L21W** | White 21W LED Light Engine | Delivered Lumens: 1,806
- 3FT-L42W** | White 42W LED Light Engine | Delivered Lumens: 3,612

4 FOOT NOMINAL FIXTURE

- 4FT-L28W** | White 28W LED Light Engine | Delivered Lumens: 2,408
- 4FT-L56W** | White 56W LED Light Engine | Delivered Lumens: 4,816

6 FOOT NOMINAL FIXTURE

- 6FT-L42W** | White 42W LED Light Engine | Delivered Lumens: 3,612
- 6FT-L84W** | White 84W LED Light Engine | Delivered Lumens: 7,224

8 FOOT NOMINAL FIXTURE

- 8FT-L56W** | White 56W LED Light Engine | Delivered Lumens: 4,816
- 8FT-L112W** | White 112W LED Light Engine | Delivered Lumens: 9,632

[See last page for finish options](#)

B - VOLTAGE

- 120-277V | Universal Voltage

C - LAMP OPTIONS

Delivered lumens shown are at 4000K CCT; apply multiplier for delivered lumens at other CCT.

- 2700K | 2700K CCT
- 3000K | 3000K CCT
- 3500K | 3500K CCT
- 4000K | 4000K CCT
- 5000K | 5000K CCT

	80 CRI	90 CRI
2700K	0.91	0.77
3000K	0.94	0.80
3500K	0.97	0.82
4000K	1.00	0.85
5000K	1.00	0.85

D - CRI

- 80 | (default)
- 90

E - MOUNTING

Fits within a 3.5" deep wall/ceiling cavity.

- REC | Recessed Mount with Trim Flange (default)

F - LINEAR RUN

Runs have a 1/8" expansion gap between diffusers. The light is continuous.

- RUN | Continuous Run
- OAL | Specify Length of Run

Length:

G - OPTIONS

When the NAT option is selected, you can feel confident that the luminaire specified is designed with high-quality materials that will withstand the corrosive environment of indoor pools. Electrical components are protected from moisture and the fixture has been tested to operate in warm ambient temperatures.

- NAT | Natatorium Construction
- F | Fusing

Standard Finishes

The colors shown are representative. Their actual appearance may vary due to differences in display settings. You can request color chips by emailing contact@spilighting.com. Please note, finishes may not be available in all configurations.

Paint Colors

PT01 RAL9003 Signal White (Gloss)	PT51 Matte White (Textured)	PT02 White (Textured)	PT04 RAL9001 Cream (Textured)	PT67 RAL7044 Silk Grey (Textured)
PT53 RAL7035 Light Grey (Textured)	PT54 RAL7037 Dusty Grey (Textured)	PT55 RAL7012 Basalt Grey (Textured)	PT56 RAL7016 Anthracite Grey (Textured)	PT11 Black (Textured)
PT57 RAL1015 Light Ivory (Textured)	PT58 RAL8004 Copper Brown (Textured)	PT59 RAL6021 Pale Green (Textured)	PT60 RAL1019 Grey Beige (Textured)	PT61 RAL7006 Beige Grey (Textured)
PT62 RAL1003 Signal Yellow (Textured)	PT63 RAL3001 Signal Red (Textured)	PT64 RAL6001 Emerald Green (Textured)	PT65 RAL5005 Signal Blue (Textured)	PT66 RAL5003 Sapphire Blue (Textured)

Metallic Paint Colors

PT22 Platinum (Metallic Gloss)	PT48 Brass (Metallic Textured)	PT28 Dark Stainless (Metallic Gloss)	PT49 Bronze (Metallic Textured)	PT32 Dark Bronze (Metallic Gloss)
PT46 Aluminum (Metallic Textured)				

Specialty Finishes



More RAL®, Pantone®, and custom finishes are available upon request. Setup fee and additional lead time applies. Call factory for details.